

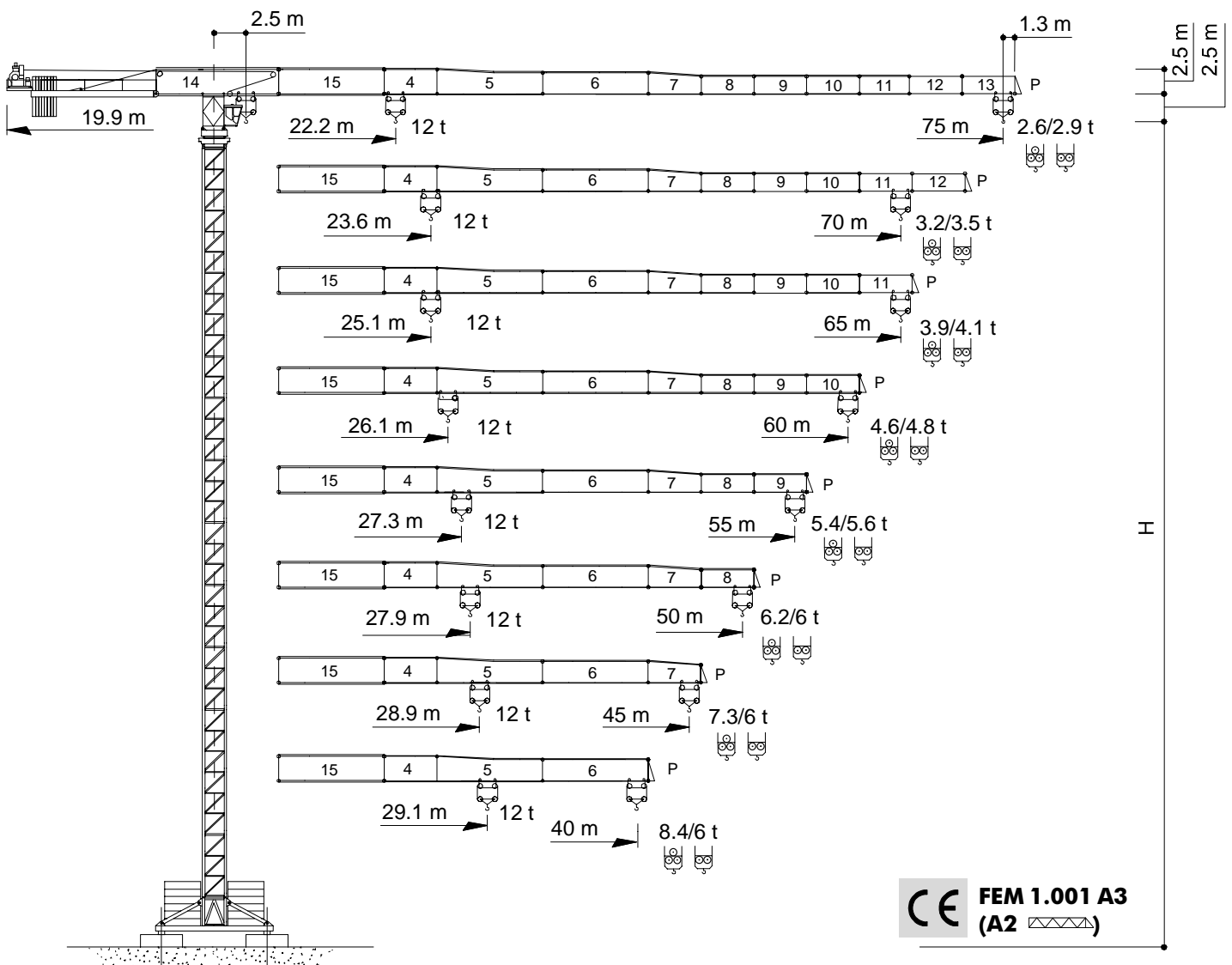
COMEDIL

Gru a torre "Flat Top"

"Flat Top" Tower Crane • Grue à tour "Flat Top"

"Flat Top" Turmdrehkran • Grua torre "Flat Top"

CTT 331-12 H20



simple, available and cost effective™



Diagramma di portata
Load Diagram

I
GB

Curbes de charges
Lastkurven

F
D

Curvas de cargas

E

CTT 331-12

	m	10	15	20	25	30	35	40	45	50	52	55	57	60	62	65	67	70	72	75
8 t - 41,2 m	t	6	6	6	6	6	6	6	5,42	4,78	4,57	4,27	4,09	3,84	3,69	3,48	3,35	3,17	3,06	2,90
8 t - 40 m	t	6	6	6	6	6	6	6	5,19	4,53	4,10	4	3,82	3,56	3,41	3,19	3,06	2,87	2,76	2,60
12 t - 22,2 m	t	12	12	12	10,48	8,48	7,06	6	5,19	4,53	4,10	4	3,82	3,56	3,41	3,19	3,06	2,87	2,76	2,60
8 t - 44,4 m	t	6	6	6	6	6	6	6	5,91	5,23	5,00	4,68	4,48	4,22	4,06	3,83	3,69	3,50		
8 t - 42,7 m	t	6	6	6	6	6	6	6	5,64	4,95	4,71	4,39	4,20	3,93	3,76	3,54	3,40	3,20		
12 t - 23,6 m	t	12	12	12	11,23	9,11	7,61	6,50	5,64	4,95	4,71	4,39	4,20	3,93	3,76	3,54	3,40	3,20		
8 t - 46,8 m	t	6	6	6	6	6	6	6	6	5,57	5,32	4,99	4,78	4,51	4,34	4,10				
8 t - 45,8 m	t	6	6	6	6	6	6	6	6	5,40	5,15	4,81	4,60	4,31	4,14	3,90				
12 t - 25,1 m	t	12	12	12	12	9,79	8,21	7,03	6,12	5,40	5,15	4,81	4,60	4,31	4,14	3,90				
8 t - 49,3 m	t	6	6	6	6	6	6	6	6	5,91	5,65	5,30	5,09	4,80						
8 t - 48 m	t	6	6	6	6	6	6	6	6	5,72	5,46	5,11	4,89	4,60						
12 t - 26,1 m	t	12	12	12	12	10,27	8,63	7,41	6,47	5,72	5,46	5,11	4,89	4,60						
8 t - 51,7 m	t	6	6	6	6	6	6	6	6	5,97	5,60									
8 t - 50,3 m	t	6	6	6	6	6	6	6	6	5,77	5,40									
12 t - 27,3 m	t	12	12	12	12	10,81	9,10	7,82	6,83	6,04	5,77	5,40								
8 t - 50 m	t	6	6	6	6	6	6	6	6	6										
8 t - 50 m	t	6	6	6	6	6	6	6	6	6										
12 t - 27,9 m	t	12	12	12	12	11,08	9,32	8,02	7,00	6,20										
8 t - 45 m	t	6	6	6	6	6	6	6	6	6										
8 t - 45 m	t	6	6	6	6	6	6	6	6	6										
12 t - 28,9 m	t	12	12	12	12	11,53	9,70	8,35	7,30											
8 t - 40 m	t	6	6	6	6	6	6	6												
8 t - 40 m	t	6	6	6	6	6	6	6												
12 t - 29,1 m	t	12	12	12	12	11,60	9,76	8,40												

Altre installazioni
Other configurations

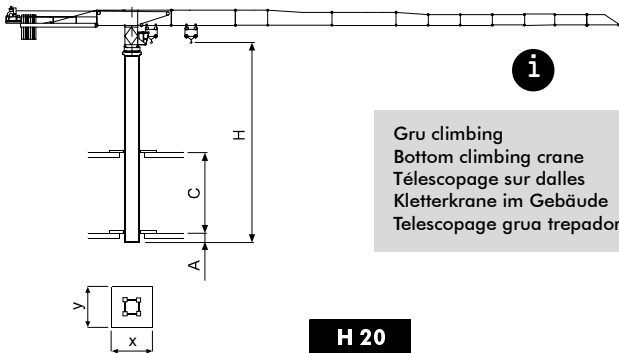
I
GB

Autres implantations
Aufstellmöglichkeiten

F
D

Otras implantaciones

E

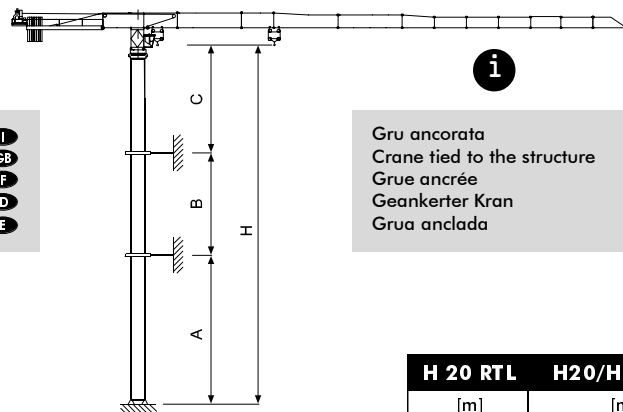


i

Gru climbing
Bottom climbing crane
Télescopage sur dalles
Kletterkrane im Gebäude
Telescopage grua trepadora

I
GB
F
D
E

	H 20 [m]
A _{min}	1
C _{min}	10
H _{max}	30
x	2.6
y	2.08



i

Gru ancorata
Crane tied to the structure
Grue ancrée
Geankerter Kran
Grua anclada

I
GB
F
D
E

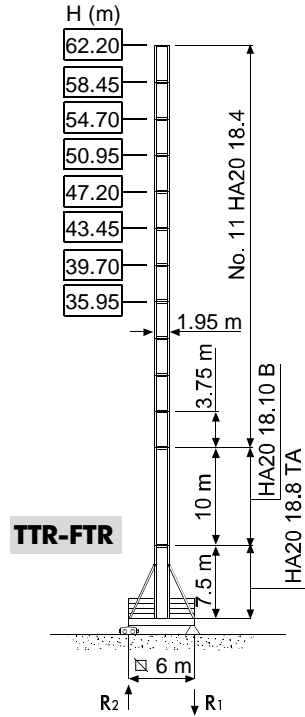
	H 20 RTL [m]	H20/HD23 R ₄ [m]
A _{min/max}	25 / 44	36 / 54
B _{min/max}	15 / 22.5	15 / 22.5
C _{max}	27	27
H _{max}	i	

Torre **I**
Mast **GB**

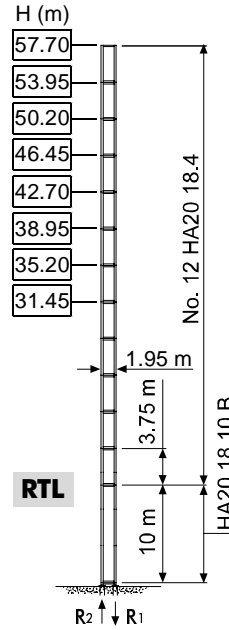
Mât **F**
Turm **D**

Mástil **E**

H 20

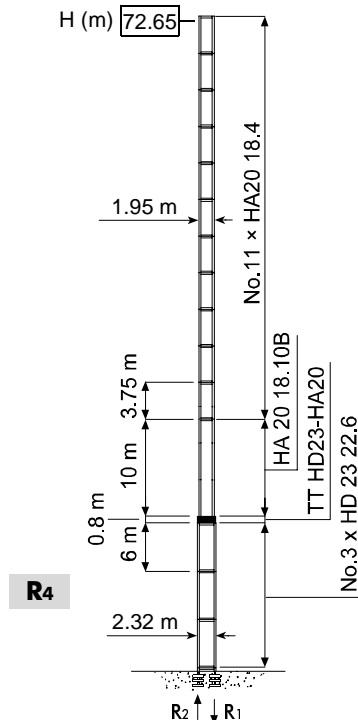


R1	1435 kN ●	1515 kN ◊
R2		150 kN ◊
	107 t	



R1	2640 kN ●	2670 kN ◊
R2	1990 kN ●	2060 kN ◊
	87 t	

H 20/HD23



R1	3000 kN ●	3900 kN ◊
R2	2250 kN ●	3250 kN ◊
	101 t	

- H** Altezza massima sotto gancio **I**
- In servizio
- ◊ Fuori servizio
- A vuoto, senza zavorra, braccio max., altezza max.
- H** Max. under hook height **GB**
- In service
- ◊ Out of service
- Without load, without ballast, max. jib and max. height
- H** Hauteur maxi. sous crochet **F**
- En service
- ◊ Hors service
- A vide, sans lest, avec flèche et hauteur maximum
- H** Höchste Hackenhöhe **D**
- In Betrieb
- ◊ Alternativlösung
- Ohne Last und Ballast, mit Maximalausleger und Maximalhöhe
- H** Maxima altura bajo gancho **E**
- En servicio
- ◊ Fuera de servicio
- Sin carga, sin lastre, con pluma y altura máxima

Meccanismi
Mechanisms



I
GB

Mécanismes
Antriebe







F
D

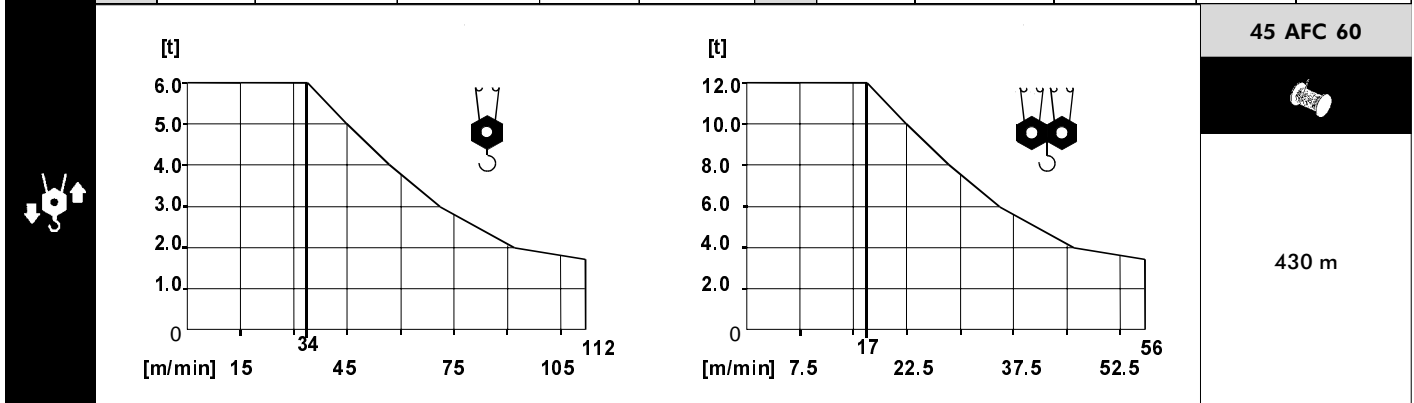
Mecanismos



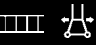

E


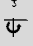
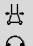





	45 AWL 60 LC	119 * kVA	400 V - 50 Hz / 460 V - 60 Hz		CE 87/405
	75 AWL 60 LC	156 * kVA			
	45 AFC 60	115 * kVA			

* Gru senza traslazione / Crane without travelling equipment / Grue sans translation / Krane ohne Schienenfahren / Grúa sin traslación

		m/min	t	kW				m/min	t	kW	
	45 AWL 60 LC		0 ⇨ 31	6	45	415 m		0 ⇨ 52	6	75	570 m
			0 ⇨ 42	4.2				0 ⇨ 71	4.22		
			0 ⇨ 58	2.96				0 ⇨ 98	3		
			0 ⇨ 80	2.05				0 ⇨ 134	2.06		
			0 ⇨ 83	0.4				0 ⇨ 154	0.4		
			0 ⇨ 15.5	12				0 ⇨ 26	12		
		0 ⇨ 21	8.4	0 ⇨ 35.5			8.44				
		0 ⇨ 29	5.92	0 ⇨ 49			6				
		0 ⇨ 40	4.1	0 ⇨ 67			4.12				
		0 ⇨ 41.5	0.8	0 ⇨ 77			0.8				



	DSR 3 70	12 ⇨ 36 ⇨ 72 m/min	70/50 Nm
	DCC 5 112	0 ⇨ 95 m/min	11 kW
	SSR 4 4 65	0.73 r.p.m.	4 x 65 Nm
	TSR 2 RG 4 M 8	12 ⇨ 24 m/min	4 x 80 Nm
	i		

	Sollevamento	I	Hoisting	GB	Levage	F	Heben	D	Elevación	E
	Traslazione carrello		Trolleying		Distribution		Katzfahren		Distribución	
	Rotazione		Slewing		Orientation		Schwenken		Orientación	
	Traslazione		Travelling		Translation		Schienenfahren		Traslación	
	Direttiva sul livello acustico		Directive on noise level		Directive sur le niveau acoustique		Richtlinie für den Schall-Leistungspegel		Directiva sobre el nivel acustico	
	Consultateci		Consult us		Nous consulter		Auf Anfrage		Consultamos	
	Potenza totale richiesta		Power requirements		Puissance totale nécessaire		Geforderte Stromstärke		Potencia necesaria	
	Alimentazione		Power supply		Alimentation		Stromversorgung		Alimentación	