

★ 4000 Series ★

The Pioneer Plus:

- Patented "X" type outrigger design for superior stability
- 500 degree rotation with no compromise over the front
- ✦ Walk-across bridge and excellent operator vision field
- ✦ Exclusive 26' to 44' off-set jib (straight or offset 15 and 30 degrees) allows operator to work further "up-and-over"
- ✦ Two-speed hydraulic boom extension system

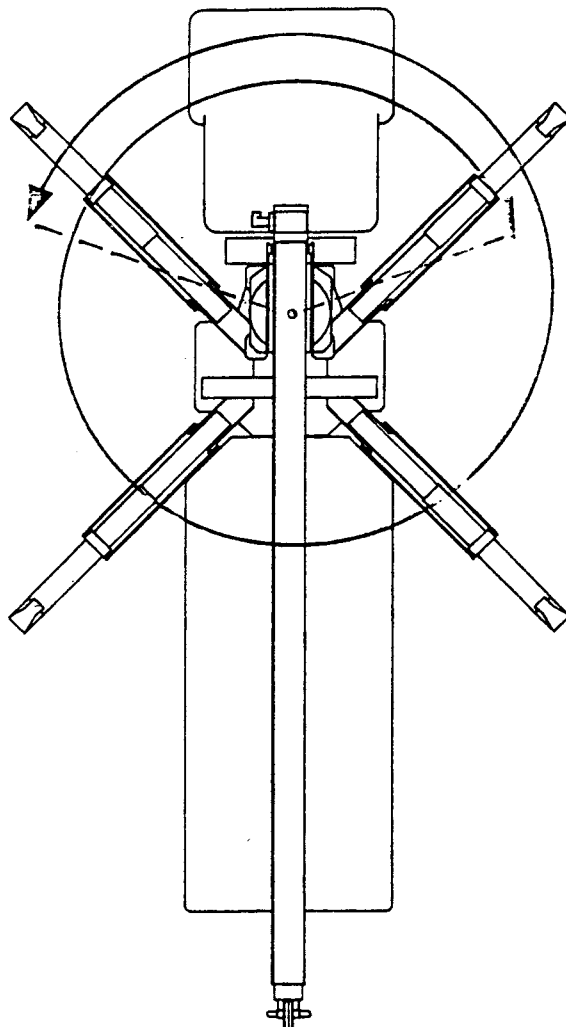
The Pioneer Details:

- ✦ 55,000 lb. capacity
- ✦ 4-section, 94 ft. proportional boom
- ✦ 104' 10" maximum sheave height
- ✦ With standard two-stage jib, 148' maximum sheave height

Additional Standard Equipment:

- ✦ Dial-a-Swing rotation speed control for maximum fine-tuning
- ✦ Radio ATB System
- ✦ Capacity Alert System with indicator gauge at each control station
- ✦ Dual air actuated foot throttles
- ✦ Air Shift PTO
- ✦ Winch cable tension roller
- ✦ Rear underride bumper
- ✦ 100 gallon hydraulic reservoir
- 3-sheave boom tip
- Pioneer installation of your crane

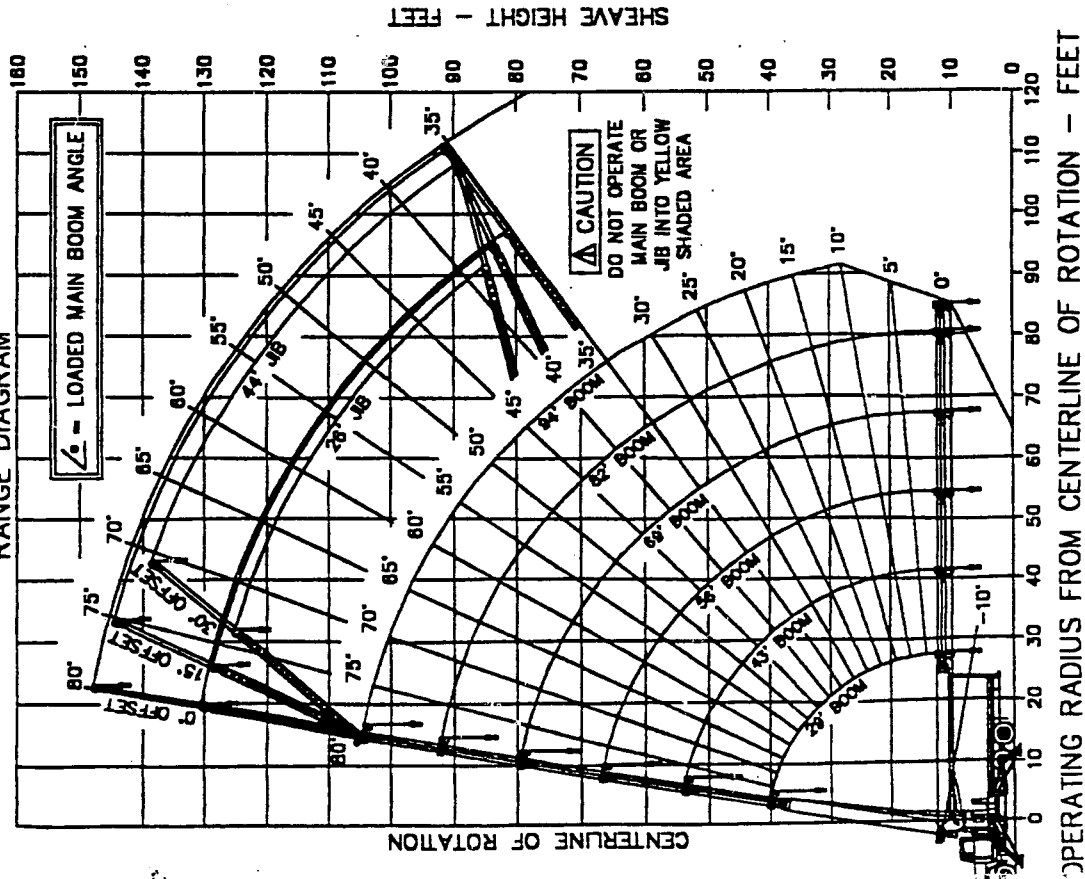
Pioneer Engineering's patented "X" outrigger design gives the crane operator something not previously available in the 50 year history of this industry ... full stability over the sides, back, and most important, over the front of the crane ... and the outriggers never leave the ground. Pioneer achieves this 360 degree "work zone" without a front bumper outrigger. With Pioneer, you need just one crane to get maximum work-ability!



Pioneer Engineering utilizes the "X" outrigger design and goes one step further. Instead of just 375 degrees of rotation, Pioneer gives the operator a full 500 degree boom rotation. This truly allows working over the front of the unit with no compromise. Compared to other manufacturers, Pioneer gives you full stability and total access to the job site. It's a tough combination to beat.

PIONEER ENGINEERING

RANGE DIAGRAM

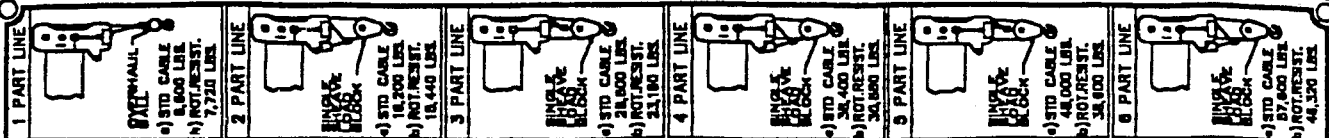


CAUTION
 DEDUCTIONS FROM RATED LOADS FOR LOAD HANDLING DEVICES SUPPLIED BY PIONEER ENGINEERING
 HANGER SHEAVE _____ 60 LBS
 SINGLE SHEAVE LOAD BLOCK _____ 210 LBS
 DOUBLE SHEAVE LOAD BLOCK _____ 340 LBS
 OVERHAUL-BALL _____ 170 LBS

WARNING
 KEEP AT LEAST 3 WRAPS OF LOADLINE ON DRUM AT ALL TIMES.
 ANTI-TWO-BLOCK SYSTEM MUST BE IN GOOD OPERATING CONDITION BEFORE OPERATING CRANE. REFER TO OWNER'S MANUAL (STRENGTH 8.8.1)
 THIS MACHINE WAS MANUFACTURED TO MEET OSHA REGULATIONS 1910.160 AND 1926.550 WHERE APPLICABLE AT THE TIME OF PRODUCTION

AREA OF OPERATION
 1. 340 CAPACITY CHART
 2. 4000 CAPACITY CHART

RAD. FT.	BOOM LOAD RATING IN LBS. WITH OUTRIGGERS EXTENDED AND MACHINE LEVEL				JIB LOAD RATING IN LBS. WITH OUTRIGGERS EXTENDED AND MACHINE LEVEL					
	29 FT BOOM	43 FT BOOM	56 FT BOOM	69 FT BOOM	26 FT 0' OFFSET	26 FT 15' OFFSET	26 FT 30' OFFSET	44 FT 0' OFFSET	44 FT 15' OFFSET	44 FT 30' OFFSET
5	15000									
6	30160									
7	30550	22850								
8	28870	22850	21820							
9	23720	20300	18900	18000						
10	21320	18040	16700	16100						
12	18180	14830	13630	12760						
14	14800	11060	11060	10230						
16	114800	8420	8180	8420						
18		5860	5860	5860						
20		4780	4780	4780						
25		27	27	27						
30		36	36	36						
35		20	20	20						
40		37	37	37						
45		27	27	27						
50		38	38	38						
55		30	30	30						
60		20	20	20						
65		33	33	33						
70		19	19	19						
75		16	16	16						
80		29	29	29						
85		18	18	18						
90		42	42	42						
MAX. PARTS OF LINE	8	4	3	3	3	2	2	2	2	2
JIB REDUCTION LBS.	480	325	250	200	185	145	145	145	145	145

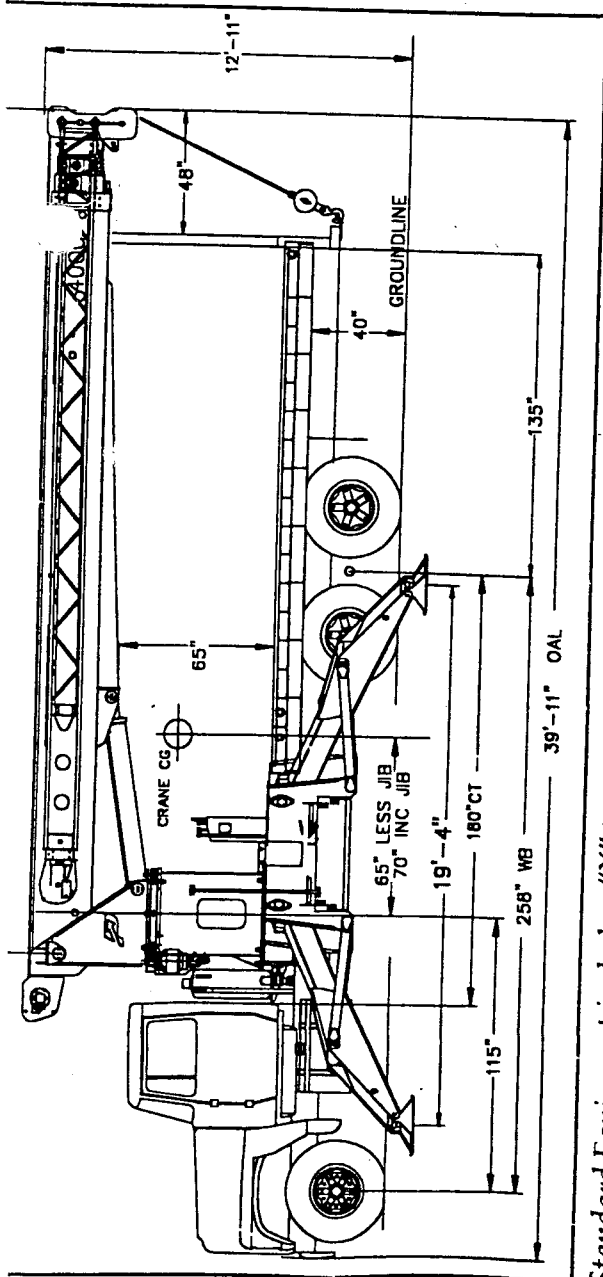


SERIES 4000
 CAPACITY ALERT
 LOAD CHART



SEE BACK MARK, DIMENSIONS, SERIALS, LBS. 84828

84-00016



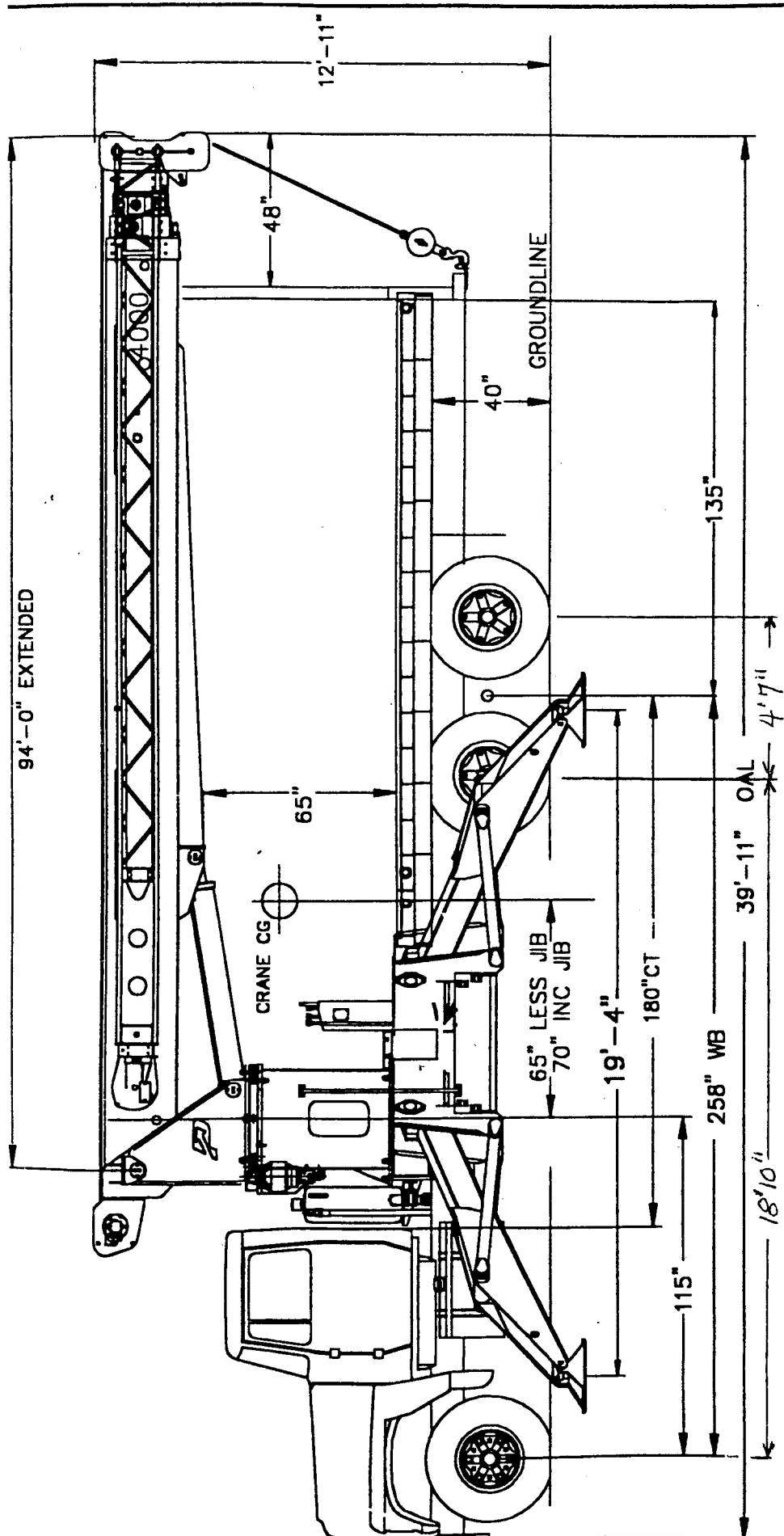
Standard Equipment includes: "X" type outrigger design with warning horn for each outrigger • 500-degree rotation with hydraulic stop in each direction • Dial-a-Swing rotation speed control • Walk across bridge or access to either control station • Two-speed hydraulic boom extension system • Hydraulic pressure gauges • Capacity alert indicator gauge at each control station • Radio ATB system • 3-sheave boom tip • 6' / 44' jib with 15 and 30 degree offset capability • Back-up alarm • Zinc-plated, on-skid steps and operator's platform • Dual air actuated foot throttles • Air shift TO • Winch cable tension roller • Rear underride bumper • Mainframe • Subframe Turret and shearball bearing • Planetary station gearbox with integral brake •

Gearbox motor with integral counterbalance valves • 4-section, 94' proportional boom • 320' of 9/16" 6x25 IWRC EIPS wire rope • 3-section vane pump • Hydraulic shut-down capacity alert • Engine start/stop switch at each control station • 2-speed (112/224 fpm speeds), planetary winch (11,400 lb.) power beyond type • 100 gallon hydraulic reservoir including hydraulic fluid • 10-micron return filter with element replacement indicator • Suction line shut-off valve • Reservoir temperature/level gauge • Suction strainer with by-pass • Dual operator control stations • Boom rest (removable) • Overhaul ball with swivel hook • Fully painted • Complete with decals and warning placards • Manuals • Custom installation on truck chassis



Pioneer Engineering
 301 Duck Road
 Grandview, MO 64030-1664
 Tele: 816-761-9494
 Fax: 816-761-6999

© 1996, Pioneer Engineering, Inc.
 Telephone: 816-761-9494
 Fax: 816-761-6999
 Website: 800-690-5438



Standard Equipment includes: "X" type trigger design with warning horn for each trigger • 500-degree rotation with hydraulic stop in each direction • Dial-a-Swing station speed control • Walk across bridge or access to either control station • Two speed hydraulic boom extension system • Hydraulic pressure gauges • Capacity alert indicator gauge at each control station • Radio ATB system • 3-sheave boom tip •

Gearbox motor with integral counterbalance valves • 4-section, 94' proportional boom • 320' of 9/16" 6x25 IWRC EIPS wire rope • 3-section vane pump • Hydraulic shut-down capacity alert • Engine start/stop switch at each control station • 2-speed (112/224 fpm speeds), planetary winch (11,400 lb.) power beyond type • 100 gallon hydraulic reservoir including hydraulic fluid • 10-micron return filter with element replacement indicator •