

# Model 534D9-45 TELEHANDLER



## Performance

### Rated Capacity

At 24 in. (610 mm) load center,  
9,000 lb (4,082 kg)

### Maximum Lift Height

45 ft (13.7 m)

### Frame Leveling

8 degrees

### Lift Speed (boom retracted)

Up: 11.4 sec

Down: 9 sec

### Boom Speed

Extend: 15 sec

Retract: 13 sec

### Travel Speeds Forward

2WD 0-18 mph (29 kmph)

4WD 0-6 mph (9.7 kmph)

### Drawbar Pull (loaded)

20,000 lb (9,072 kg)

### Operating Weight

With 48 in. (1.2 m) carriage and forks,  
24,420 lb (11,077 kg)

## Standard Specifications

### Engine

Make and Model	John Deere 4045TF275
	Turbocharged
Fuel	No. 2 Diesel
Cycles	4
No. of Cylinders	4
Displacement	276 cu in (4.5 L)
Rated Speed	2,400 rpm
Max. Gross BHP	110 hp (82 kW)
Fuel Tank	38 gal (144 L)

### Engine Filters

Two-stage dry air cleaner – centrifugal  
pre-cleaner with continuous dust ejector plus  
replaceable dry filter element.

Visual service indicator.

Replaceable spin-on fuel filter.

Full-flow replaceable spin-on engine oil filter.

### Electrical System

Voltage: 12V

Alternator: 65 amp

Battery: 1050 cold cranking amps at 0°F

### Hydrostatic Drive

6,300 PSI (43,437 kPa) closed loop with  
piston pump and motors.

All hydraulic connections ORS and  
Code 62 O-ring flanges.

Common reservoir with implement hydraulics.

8 micron suction filter for charge pump.

Self-contained, swashplate design, variable  
displacement, over center, piston pump.

Neutral start switch. (Park brake must also  
be engaged to start.)

2WD and 4WD inching.

Audible back-up travel alarm mounted in  
counterweight area signals reverse movement.

### Axles

Planetary hubs with piston motors on rear axle.

Piston motor-driven planetary front axle with  
high-bias, limited slip differential.

### Service Brakes

Hydraulic wet disc brake on each front wheel.

Hydraulic dynamic braking on front axle and  
both rear wheels.

### Parking Brakes

Wet disc spring-applied electro/hydraulic  
release, fail safe on both front wheels.

Light on dashboard indicates when brakes  
are on.

Frame mounted right side rear view mirror.

### Tires

Standard: 13:00 x 24 – 12PR, G2 type.

Optional: Radial 13:00 x 24 – 12PR  
L2 rock tires.

### Cab

Certified ROPS/FOPS structure, adjustable seat  
and horn.

Forward, neutral, reverse lever on left of  
steering column.

Single foot pedal control provides both braking  
and inching for lifting while maneuvering vehicle.

Electro/hydraulic traction lock valve for  
superior tractive effort.

### Steering

Hydraulic power steering with manual backup.

Rear wheel steering, 90° pivot around  
either front tire.

Outside turning radius is less than  
chassis length.

### Instruments

Volt meter, hourmeter, engine oil pressure,  
temperature, fuel gauge.

All gauges protected by clear acrylic cover.

### Controls

Grouped for operator comfort and  
convenience.

Key operated ignition/starter switch.

2WD – 4WD switch on dash.

Boom lift and crowd on single joystick.

Right-hand tilt and sway lever.

Foot throttle.

Floor mounted traction lock switch.

### Hydraulic System-Implement

Single-section gear pump.

40 gal (151.4 L) system capacity.

8 micron filter with visual service indicator  
and suction strainer.

Lift, crowd, tilt and sway cylinders have load  
checks to prevent dropping of load in the  
event of hose or other hydraulic failure.

### Auxiliary Hydraulics

Used for all attachments equipped with  
cylinders or other hydraulic components.  
Consists of valves, controls and hydraulic lines.

## Accessories & Options

### Cab Enclosure

Lockable, split door. Windshield wiper.  
Heater and defroster fan.

### Light Group

2 cab-mounted headlights,  
1-backup/tail/stoplight and rotating beacon.

### Radial and Rock Tires

### Winch

### Left Hand Tilt/Sway Control

### Tilt on Joystick

## Attachments

### Standard Carriage

48 in. (1.2 m), 66 in. (1.7 m) or  
72 in. (1.8 m)

### Side Tilt Carriage

48 in. (1.2 m) and 66 in. (1.7 m)

### 100° Swing Carriage

72 in. (1.8 m)

### Pallet Forks

2 x 6 x 48 in.  
(51 mm x 152 mm x 1.2 m)

### Cubing Forks

2 x 2 x 48 in.  
(51 mm x 51 mm x 1.2 m)

### Vertical Mast

6 ft (1.8 m)

### 100° Swing Mast

6 ft (1.8 m) with 48 in. (1.2 m)  
or 60 in. (1.7 m) Forks

### Truss Boom With or Without Winch

10 ft (3.0 m)

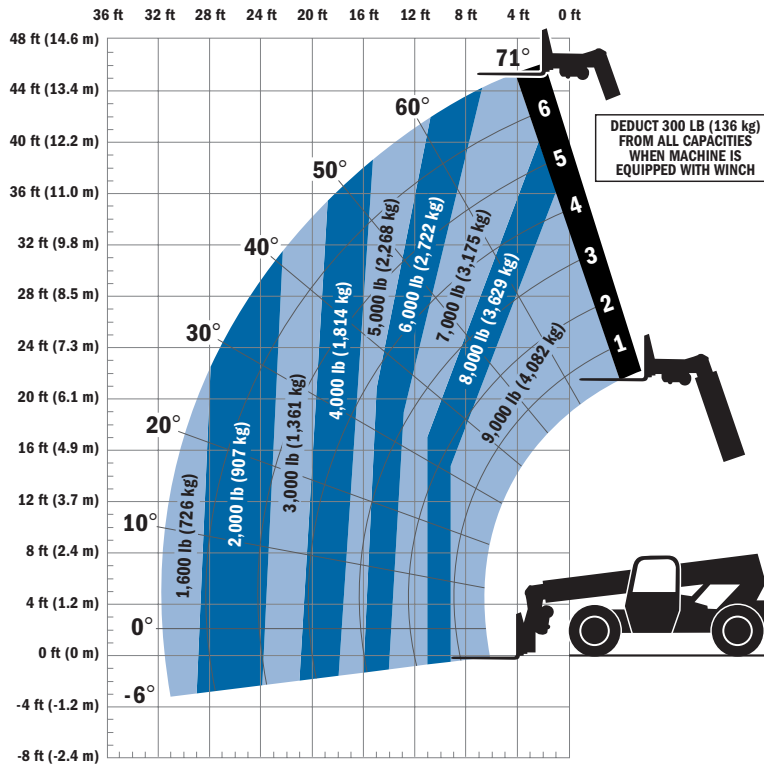
### Bucket

0.75 cu yd (0.57 m<sup>3</sup>) or  
1.25 cu yd (0.95 m<sup>3</sup>)

### Work Platform

### Instant Hook

## Model 534D9-45 TELEHANDLER



### Dimensions

- Length (less forks) . . . . 237 in. (6.02 m)
- Width . . . . . 97 in. (2.46 m)
- Height . . . . . 94 in. (2.38 m)
- Wheelbase . . . . . 135 in. (3.42 m)
- Ground Clearance . . . . 19 in. (483 mm)
- Outside Turning Radius . . 173 in. (4.39 m)
- Max. Reach from Front Tires to  
24 in. (609 mm) Load Center . . . 31.5 ft  
(9.60 m)

### IMPORTANT

Rated lift capacities shown are with machine equipped with carriage and pallet forks. The machine must be level on a firm surface with undamaged, properly inflated tires. Machine specifications and stability are based on rated lift capacities at specific boom angles and boom lengths. (If specifications are critical, the proposed application should be discussed with your dealer.)

DO NOT exceed rated lift capacity loads, as unstable and dangerous machine conditions will result.

DO NOT tip the machine forward to determine the allowable load.

Use only JLG approved attachments with proper material handler model/attachment load capacity charts displayed in the operator's cab. OSHA requires all rough terrain forklift operators be trained according to OSHA 29 CFR 1910.178 (1).



### JLG Industries, Inc.

1 JLG Drive  
McCconnellsburg, PA 17233-9533  
Telephone 717-485-5161  
Toll-free in US 877-JLG-LIFT  
Fax 717-485-6417  
www.jlg.com

*Due to continuous product improvements, JLG Industries reserves the right to make specification and/or equipment changes without prior notification. This machine meets or exceeds ASME B56.6-2002 as originally manufactured for intended applications.*

Form No.: SS-G534D945-0605-15M  
Part No.: 3132205  
R060501  
Printed in USA