

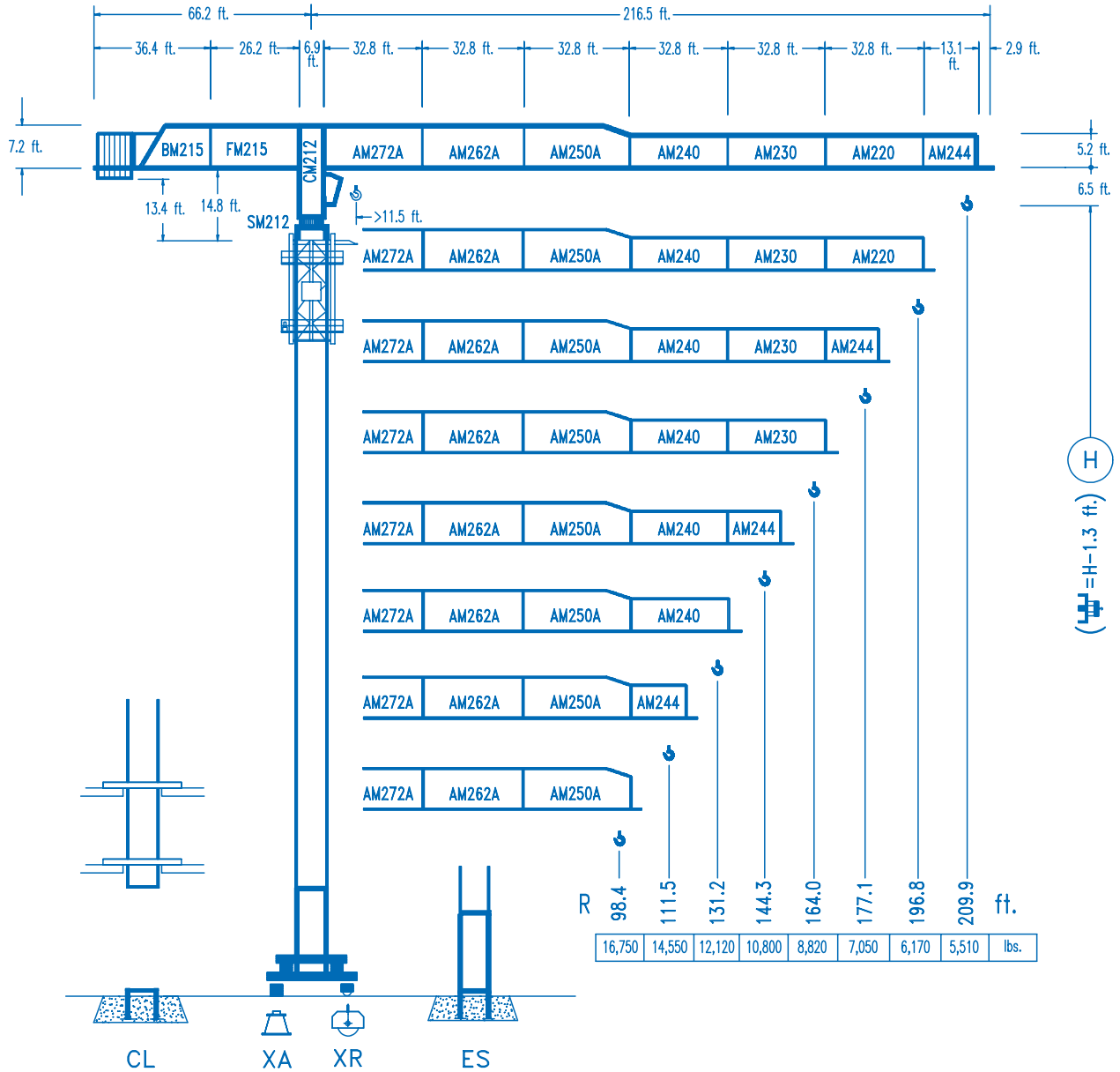


# COMANSA


**LINDEN 2100**

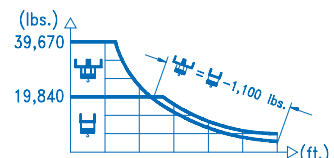
**21 LC 210**

**39,670 lbs.**



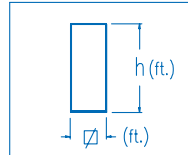
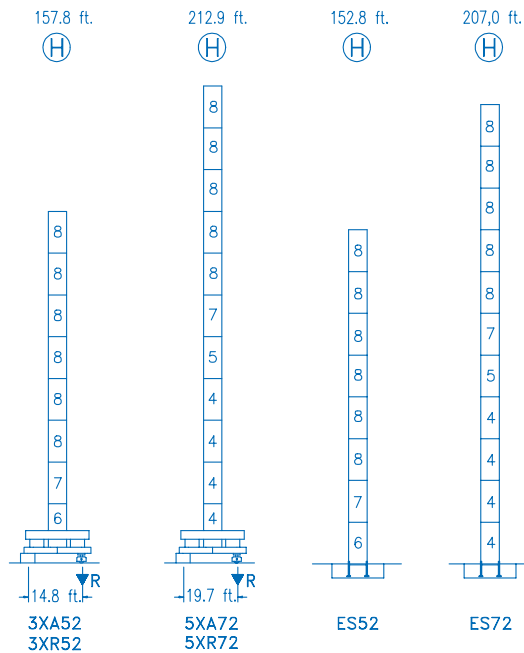
**CE**  
DIN 15018 H1 B3

R																												
209.9	38.4	49.2	68.9	69.2	82.0	98.4	111.5	131.2	144.3	164.0	177.1	196.8	209.9	39.670	29,650	19,840	19,840	16,440	13,380	11,610	9,640	8,640	7,430	6,780	5,960	5,510	ft.	lbs.
196.8	39.0	49.2	70.5	71.2	82.0	98.4	111.5	131.2	144.3	164.0	177.1	196.8		39,670	30,330	19,840	19,840	16,950	13,810	11,990	9,960	8,910	7,680	7,010	6,170		ft.	lbs.
177.1	39.0	49.2	70.2	71.5	82.0	98.4	111.5	131.2	144.3	164.0	177.1			39,670	30,220	19,840	19,840	17,050	13,900	12,070	10,020	8,970	7,720	7,050			ft.	lbs.
164.0	43.0	49.2	65.6	77.4	80.0	98.4	111.5	131.2	144.3	164.0				39,670	33,790	24,110	19,840	19,840	15,740	13,670	11,380	10,210	8,820				ft.	lbs.
144.3	44.6	49.2	65.6	80.4	84.0	98.4	111.5	131.2	144.3					39,670	35,250	25,190	19,840	19,840	16,610	14,450	12,030	10,800					ft.	lbs.
131.2	44.6	49.2	65.6	80.4	84.3	98.4	111.5	131.2						39,670	35,270	25,210	19,840	19,840	16,730	14,540	12,120						ft.	lbs.
111.5	43.9	49.2	65.6	79.7	84.3	98.4	111.5							39,670	34,910	24,940	19,840	19,840	16,720	14,550							ft.	lbs.
98.4	43.9	49.2	65.6	79.0	84.6	98.4								39,670	34,700	24,780	19,840	19,840	16,750								ft.	lbs.

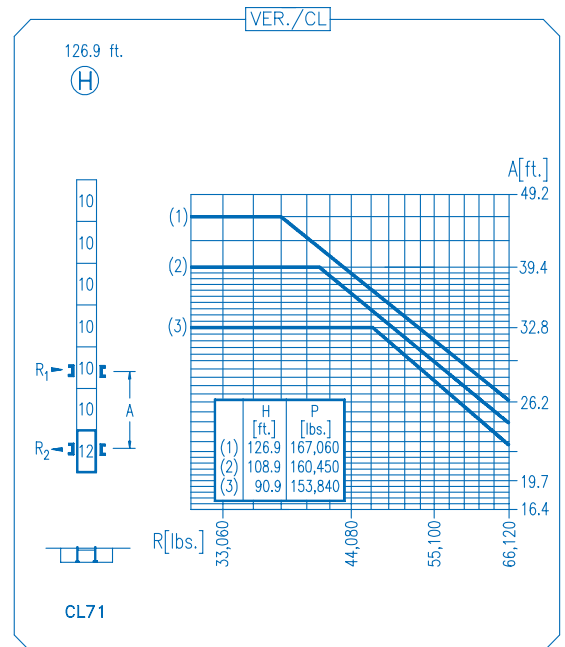


**DS.0406.26**

12/05 Reserva de modificaciones.- Subject to modifications.- Modifications réservées.- Konstruktionsänderungen vorbehalten.



N	Ref.	∅	h
4	S25	6.6	18.0
5	TS25	6.6	18.0
6	S24	6.6	18.0
7	TS24	6.6	18.0
8	S23	6.6	18.0
10	S15	5.2	18.0
12	CLS15	5.2	10.2



<b>R. máx.</b>	En servicio In operation	<b>3XR52 ..... 198,580 lbs.</b>
	En service In Betrieb	<b>5XR72 ..... 210,920 lbs.</b>

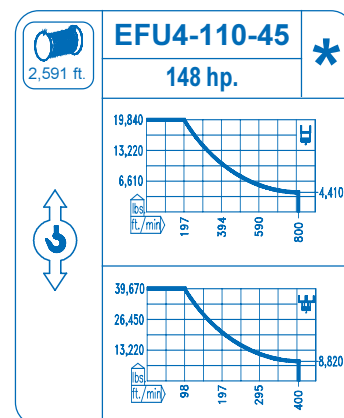
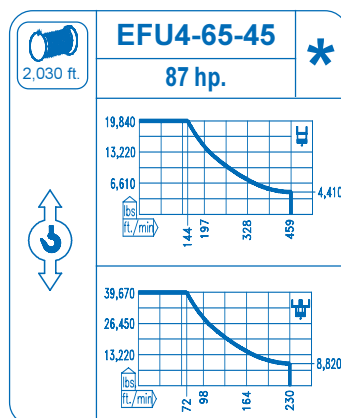
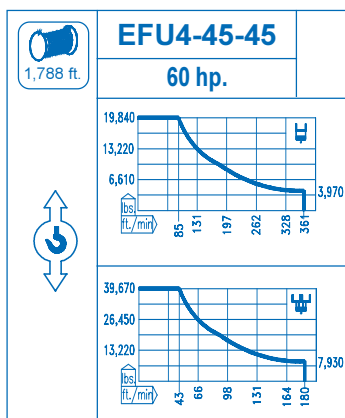
<b>R. máx.</b>	Fuera de servicio Out of service	<b>3XR52 ..... 208,060 lbs.</b>
	Hors service Ausser Betrieb	<b>5XR72 ..... 295,340 lbs.</b>

**CFU-7.5**  
10 hp.  
0 ⇄ 308 ft./min

**GR-12**  
2 x 88 ft.lbs.  
0 ⇄ 0.8 rpm

**TRA-7.5**  
2 x 55 ft.lbs.  
0 ⇄ 78 ft./min

**TRA-7.5VC**  
2 x 55 ft.lbs.  
0 ⇄ 78 ft./min  
5XR72



Tensión de alimentación Operating voltage Tension de service Betriebsspannung	<b>480 V</b> <b>3 ph</b> <b>60 Hz</b>
--	---

Opcional Optional En option Kaufoption	<b>*</b>
---	----------