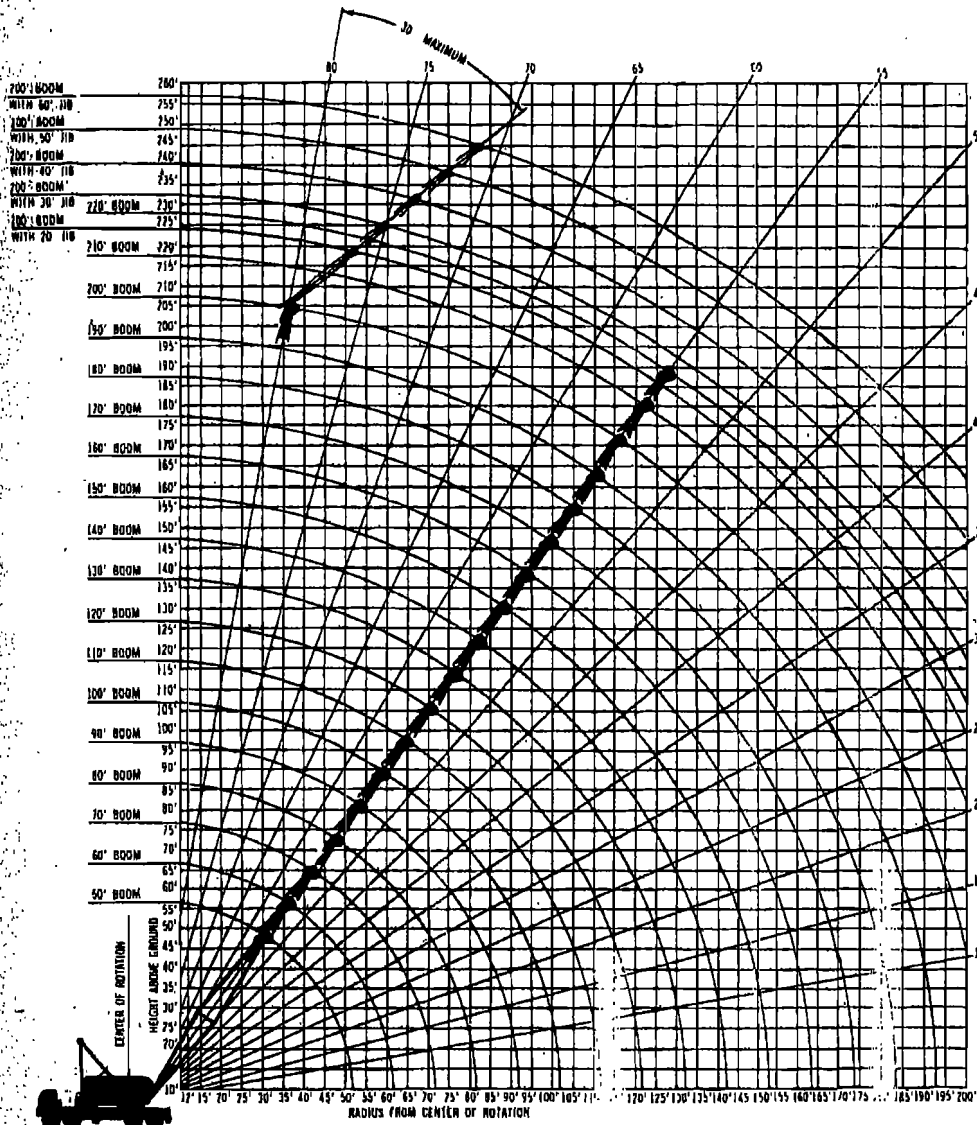


P&H[®] 8115-TC

115 / 125 ton Truck Crane 200' Boom plus 60' Jib 220' boom



Your versatile P & H 8115-TC adapts readily to your special operating needs through a choice of counterweights and boom tips. This brochure contains these crane rating charts:

115 ton Rating Standard 220' Boom 200' Boom and 60' Jib

1. 35,500 lbs. counterweight, over side and rear — on outriggers
2. 35,500 lbs. counterweight plus 8,000 lbs. front counterweight, over rear — on outriggers.
3. 38,500 lbs. counterweight plus 8,000 lbs. front counterweight, over rear — on rubber
4. 18,500 lbs. counterweight, over side and rear — on outriggers
5. 18,500 lbs. counterweight, over side and rear — on rubber

125 ton Rating Hammerhead Booms 160', 140' and 60' Jib

6. 18,500 lbs. counterweight, over side and rear — on rubber
7. 18,500 lbs. counterweight, over side and rear — on outriggers
8. 35,500 lbs. counterweight, over side and rear — on outriggers

Jib Ratings

Standard
62" wide x 62" deep
Boom

crane

lifting capacities
working ranges

PGSA CLASS 12-624

Rated crane loads in pounds — main boom (62" w. x 62" d.) in over side

OPER. RAD. (FT.)	ANGLE	50 FT. BOOM		60 FT. BOOM		70 FT. BOOM		80 FT. BOOM		90 FT. BOOM		100 FT. BOOM		110 FT. BOOM		120 FT. BOOM			
		BOOM PT. EL.	RATING LBS.	BOOM PT. EL.	RATING LBS.	BOOM PT. EL.	RATING LBS.	BOOM PT. EL.	RATING LBS.	BOOM PT. EL.	RATING LBS.	BOOM PT. EL.	RATING LBS.	BOOM PT. EL.	RATING LBS.	BOOM PT. EL.	RATING LBS.		
120	82	57.8	230,000																
115	78	57.4	200,000	80	67.6	200,000													
120	73	58.2	170,000	78	66.6	169,000	78	76.8	169,000	70	87.0	164,800	80	97.2	161,800				
125	68	54.3	128,300	71	65.1	128,100	73	75.8	127,800	76	85.9	127,700	77	96.2	127,400				
130	60	51.8	95,900	65	63.1	95,100	69	70.9	94,800	72	84.5	94,800	74	94.9	94,300				
135	53	48.5	75,800	60	60.5	75,400	65	71.8	75,100	68	82.7	74,800	71	93.4	74,500				
140	46	44.1	62,400	54	57.2	62,200	60	69.1	62,000	64	80.5	61,700	67	91.4	61,400				
145	38	38.1	52,800	48	53.1	52,700	56	65.9	52,500	60	77.8	52,200	64	89.2	51,900				
150	26	29.4	45,700*	41	48.0	45,500	50	62.1	45,000	58	74.8	45,000	66	86.5	44,600				
160				23	31.4	35,900	38	51.5	35,200	46	66.5	34,800	52	79.7	34,600				
170							21	33.2	28,500	35	54.7	28,200	44	70.8	27,900				
180									19	34.8	20,500	33	67.8	20,200					
190												20	38.9	20,000					
100																			
110																			
120														18	42.1	14,300	29	87.3	14,200
130																17	49.8	12,400	
140																			
150																			
160																			
170																			
180																			
190																			
WARNING: WHEN BOOM IS EQUIPPED WITH JIB, MAIN HOOK RATING MUST BE REDUCED TO COMPENSATE FOR JIB ATTACHMENT WEIGHT.																			
		JIB LENGTH		20 FT.	30 FT.	40 FT.	50 FT.	60 FT.											
		DEDUCT - LBS.		1,500	1,500	2,000	2,500	3,000											

32R74

PGSA CLASS 12-695

with 35,500 lbs. counterweight

Rated crane loads in pounds — main boom (62" w. x 62" d.) in

OPER. RAD. (FT.)	ANGLE	50 FT. BOOM		60 FT. BOOM		70 FT. BOOM		80 FT. BOOM		90 FT. BOOM		100 FT. BOOM		110 FT. BOOM		120 FT. BOOM			
		BOOM PT. EL.	RATING LBS.	BOOM PT. EL.	RATING LBS.	BOOM PT. EL.	RATING LBS.	BOOM PT. EL.	RATING LBS.	BOOM PT. EL.	RATING LBS.	BOOM PT. EL.	RATING LBS.	BOOM PT. EL.	RATING LBS.	BOOM PT. EL.	RATING LBS.		
120	82	57.9	230,000																
115	78	57.4	200,000	80	67.6	200,000													
120	73	58.2	170,000	78	66.6	169,000	78	76.8	169,000	70	87.0	164,800	80	97.2	161,800				
125	68	54.3	135,700	71	65.1	135,600	73	75.6	135,600	76	85.9	135,400	77	96.2	135,400				
130	60	51.8	108,100	65	63.1	105,800	69	73.9	105,800	72	84.5	105,400	74	94.9	105,400				
135	53	48.5	84,200	60	60.5	84,000	65	71.8	83,700	68	82.7	83,400	71	93.4	83,400				
140	46	44.1	69,800	54	57.2	69,300	60	69.1	69,000	64	80.5	68,700	67	91.4	68,700				
145	38	38.1	58,400	48	53.1	58,000	55	65.9	58,000	60	77.8	58,000	64	89.2	58,000				
150	26	29.4	45,700*	41	48.0	45,000	50	62.1	45,000	58	74.8	45,000	66	86.5	45,000				
160				23	31.4	36,400	38	51.5	36,000	46	66.5	35,800	52	79.7	35,800				
170							21	33.2	29,900	36	54.7	29,200	44	70.8	29,200				
180									19	34.8	25,000	33	67.8	25,000					
190												20	38.9	22,400					
100																			
110																			
120														18	42.1	18,000	29	87.3	18,000
130																17	49.8	13,800	
140																			
150																			
160																			
170																			
180																			
190																			
WARNING: WHEN BOOM IS EQUIPPED WITH JIB, MAIN HOOK RATING MUST BE REDUCED TO COMPENSATE FOR JIB ATTACHMENT WEIGHT.																			
		JIB LENGTH		20 FT.	30 FT.	40 FT.	50 FT.	60 FT.											
		DEDUCT - LBS.		1,500	1,500	2,000	2,500	3,000											

32R75

with 35,500 lbs. counterweight

(ratings shown are based on a counterweight of 18,500 lbs. and 17,000 lbs.)

and over rear work areas with outriggers fully extended and set

OPER. RAD. FT.	130 FT. BOOM		140 FT. BOOM		150 FT. BOOM		160 FT. BOOM		170 FT. BOOM		180 FT. BOOM		190 FT. BOOM		200 FT. BOOM		210 FT. BOOM			
	ANGLE	BOOM PT. EL.	RATING LBS.	ANGLE	BOOM PT. EL.	RATING LBS.	ANGLE	BOOM PT. EL.	RATING LBS.	ANGLE	BOOM PT. EL.	RATING LBS.	ANGLE	BOOM PT. EL.	RATING LBS.	ANGLE		BOOM PT. EL.	RATING LBS.	
12																				
15																				
20																				
25																				
30	79	139.0	82,400	80	146.2	83,400														
35	77	135.0	73,500	78	145.2	74,200	75	155.4	72,800	79	165.6	65,500	80	175.8	60,100					
40	74	133.7	60,300	76	144.0	60,100	77	154.9	59,800	77	164.6	59,000	78	174.8	57,900					
45	72	132.2	50,800	73	142.7	50,300	75	153.0	50,300	76	163.7	49,700	77	173.7	49,000	78	184.0	47,000	79	194.4
50	70	130.5	43,800	71	141.1	41,500	73	151.6	43,800	74	162.0	43,000	75	172.4	42,800	76	182.8	42,800	77	193.3
60	65	126.3	33,800	67	137.3	33,300	69	148.1	33,100	70	158.8	32,800	71	169.4	32,800	72	179.9	32,300	73	190.4
70	60	121.1	26,000	62	132.5	26,000	64	143.7	26,300	66	154.7	26,100	68	165.6	26,800	69	176.4	26,500	70	187.0
80	55	115.2	22,800	58	127.2	21,400	60	138.9	22,100	62	150.3	21,900	64	161.5	21,800	66	172.5	21,400	67	183.4
90	50	107.8	19,000	53	120.3	18,700	56	132.8	18,800	59	144.8	18,200	62	156.2	17,900	64	167.8	17,700	66	178.8
100	45	97.8	16,100	48	112.0	16,400	51	125.2	16,800	54	137.8	16,400	57	150.0	16,100	60	161.9	14,900	62	173.5
110	37	85.9	13,900	42	101.8	14,600	45	116.3	15,400	48	129.8	16,100	51	142.8	16,900	54	155.3	17,600	57	167.4
120	28	69.9	12,100	35	89.1	11,800	40	109.8	11,800	44	120.4	11,300	48	134.3	11,000	51	147.8	10,800	54	160.3
130	18	45.0	10,800	27	72.3	10,400	34	92.1	10,000	39	109.1	9,700	43	124.4	9,500	48	139.7	9,260	52	152.2
140				18	48.4	9,000	26	74.0	8,750	33	95.1	8,500	38	112.5	8,200	42	128.2	7,950	46	142.9
150							15	47.7	7,700	25	78.9	7,400	32	98.0	7,150	37	116.9	6,850	41	132.0
160										16	49.0	6,600	25	79.1	6,200	31	100.7	5,900	36	119.1
170													14	60.3	5,400	24	81.2	5,100	30	103.4
180																14	61.5	4,400	23	83.2
190																			14	62.7

3. over rear work areas — without

OPER. RAD. FT.	60 FT. BOOM	80 FT. BOOM	70 FT. BOOM	80 FT. BOOM
	ANGLE	RATING LBS.	ANGLE	RATING LBS.
10	81	106,900		
15	78	90,400	80	89,800
17	76	78,200	79	77,700
20	73	64,900	76	64,400
25	68	50,300	71	49,800
30	60	40,800	65	40,300
35	53	34,200	60	33,700
40	45	29,300	64	28,800
45	36	25,600	48	25,000

and 8,000 lbs. front bumper counterweight

over rear work areas with outriggers fully extended and set

OPER. RAD. FT.	130 FT. BOOM		140 FT. BOOM		150 FT. BOOM		160 FT. BOOM		170 FT. BOOM		180 FT. BOOM		190 FT. BOOM		200 FT. BOOM		210 FT. BOOM			
	ANGLE	BOOM PT. EL.	RATING LBS.	ANGLE	BOOM PT. EL.	RATING LBS.	ANGLE	BOOM PT. EL.	RATING LBS.	ANGLE	BOOM PT. EL.	RATING LBS.	ANGLE	BOOM PT. EL.	RATING LBS.	ANGLE		BOOM PT. EL.	RATING LBS.	
12																				
15																				
20																				
25																				
30	79	139.0	82,400	80	148.2	83,400														
35	77	135.0	82,100	78	145.2	79,900	78	156.4	72,800	79	166.6	65,500	80	176.8	60,100					
40	74	133.7	67,500	76	144.0	67,300	77	154.3	67,000	77	164.6	62,500	78	174.8	57,900	79	185.0	47,500	79	195.2
45	72	132.2	57,900	73	142.7	56,700	75	153.0	56,400	76	163.7	56,100	76	173.7	54,700	77	184.0	47,000	78	194.4
50	70	130.5	49,000	71	141.1	48,800	73	151.6	48,500	74	162.0	48,200	75	172.4	47,900	76	182.8	46,000	77	193.3
60	65	126.3	38,200	67	137.3	37,900	69	148.1	37,600	70	158.8	37,400	71	169.4	37,100	72	179.9	36,800	73	190.4
70	60	121.1	30,600	62	132.5	30,500	64	143.7	30,200	66	154.7	30,000	68	165.6	29,700	69	176.4	29,400	70	187.0
80	55	114.7	25,800	58	127.2	25,200	60	138.9	25,000	62	149.9	24,700	64	161.5	24,400	66	172.5	24,100	67	183.4
90	50	107.5	22,000	53	120.3	21,600	56	132.8	21,500	59	144.8	21,300	62	156.2	21,000	64	167.8	20,700	66	178.8
100	45	97.9	18,900	48	112.0	18,600	51	125.2	18,400	54	137.8	18,100	57	150.0	17,800	60	161.9	17,600	62	173.5
110	37	85.8	16,400	42	101.8	16,100	45	116.3	15,900	48	129.8	16,800	51	142.8	16,900	54	155.3	16,500	57	167.4
120	28	69.9	14,400	35	89.1	14,100	40	109.8	13,800	44	120.4	13,600	48	134.3	13,300	51	147.8	13,000	54	160.3
130	18	46.0	11,000	27	72.3	12,400	34	92.1	12,100	39	109.1	11,800	43	124.4	11,600	48	139.7	11,300	52	152.2
140				18	48.4	9,000	26	74.0	10,700	33	95.1	10,400	38	112.5	10,200	42	128.2	9,900	46	142.9
150							15	47.7	8,300	25	78.9	8,000	32	98.0	7,800	37	116.9	7,600	41	132.0
160										16	49.0	6,800	25	79.1	6,500	31	100.7	6,300	36	119.1
170													14	60.3	5,700	24	81.2	5,400	30	103.4
180																14	61.5	4,800	23	83.2
190																			14	62.7

operating instructions printed throughout this brochure are for your safety and will contribute to the long life of your P&H 8115-TC

Operating radius is the horizontal distance from center-line of rotation to a vertical line through the center of gravity of the load.

Ratings shown are only for combination of P & H manufactured upper, boom, jib, counterweights, carrier and outriggers. Boom backstops are required for all boom lengths. Boom inserts must be arranged as shown in the Boom Make-Up Chart. Standard boom hoist reeving is 10 part line. Gantry must be in raised position for all operating conditions except when mast is required. When boom is equipped with jib, main hook ratings must be reduced by 1500 lbs. for 20 ft. or 30 ft. jib; 2000 lbs. for 40 ft. jib; 2500 lbs. for 50 ft. jib and 3000 lbs. for 60 ft. jib. Refer to diagrams for applicable working area.

Ratings shown are based on freely suspended loads and make no allowance for such factors as wind effect on lifted loads, ground conditions, out-of-level, operating speeds or any other condition that could be detrimental to the safe operation of this equipment. The operator, therefore, has the responsibility to judge the existing conditions and reduce lifted loads and operating speeds accordingly. Ratings do not exceed 85% of tipping load as determined by SAE J 765. Deduct weight of hook block(s), slings, cement bucket, and all other load handling accessories from main boom or jib rating shown.

Maximum approved travel speed with 8,000 pound front bumper counterweight installed is 5 m.p.h. All tires must be evenly inflated to 100 P.S.I. Maximum approved boom length for travel is 130 ft. or 100 ft. boom and 30 ft. jib. Boom must be positioned over rear of carrier. Gantry must be in raised position to travel with boom attached.

Refer to pages 5-11 for additional information.

WARNING: The wind effect on the lifted load can cause sufficient side load to overstress boom or jib structure. When suspended load will not remain in line with boom, derate chart 25%. We recommend stopping operation when wind is above 30 m.p.h. and tying off or lowering boom when wind is above 50 m.p.h. When continued operation under windy conditions is necessary, consult factory for special derated load rating chart.

WARNING: When operating crane "without outriggers" loads lifted over rear and swung over side, will increase in radius due to tire deflection. This increase in radius must be compensated for by raising boom, or machine may tip over.

WARNING: Welding or other repair to tubular steel booms may weaken the structure. See your P & H dealer for authorized boom repair service. Unauthorized repair will void all warranties.

MAXIMUM BOOM LENGTH TO LIFT OFF GROUND ON OUTRIGGERS ONLY				
BOOM OVER	WITHOUT FRONT BUMPER COUNTERWEIGHT		WITH 8,000 LBS. FRONT BUMPER COUNTERWEIGHT	
	BOOM ONLY	BOOM & JIB	BOOM ONLY	BOOM & JIB
SIDE	200	190+50	200	190+50
REAR	220	190+60	220	200+60

OPTIONAL AUXILIARY REAR FLOATS MAY BE USED IN PLACE OF 8,000 LBS. FRONT BUMPER COUNTERWEIGHT FOR ERECTING MAXIMUM BOOM LENGTH AS SPECIFIED IN CHART.

210 FT. BOOM			220 FT. BOOM			OPER. RAD. FT.
BOOM PT. EL.	RATING LBS.	ANGLE	BOOM PT. EL.	RATING LBS.		
PER HITCH) REQUIRED						12
BOOM FOOT PIN.						15
						20
						25
						30
						35
						40
214.6	30,000	80	224.6	32,200		45
213.6	33,100	78	223.6	31,300		50
211.1	31,400	79	221.5	29,700		60
208.2	24,800	73	218.7	24,300		70
205.0	20,500	70	215.6	20,200		80
200.9	16,800	67	211.8	16,500		90
196.2	13,800	65	207.3	13,700		100
190.8	11,700	62	202.3	11,400		110
184.7	9,800	59	196.5	9,550		120
177.8	8,300	56	190.1	8,050		130
170.0	7,000	52	182.8	6,750		140
161.0	5,800	49	174.6	5,650		150
150.9	4,950	45	165.3	4,700		160
139.1	4,150	42	154.7	3,850		170
125.9	3,400	38	142.5	3,150		180
108.6	2,800	33	128.3	2,500		190

without outriggers

BOOM LENGTH IS.	90 FT. BOOM		100 FT. BOOM		OPER. RAD. FT.
	ANGLE	RATING LBS.	ANGLE	RATING LBS.	
					13
					15
					17
700	80	08,200			20
100	77	48,600	79	40,300	25
700	74	09,200	76	38,800	30
600	71	02,600	73	32,200	35
200	67	27,700	70	27,400	40
400	64	23,900	66	23,800	45

32R76

210 FT. BOOM			220 FT. BOOM			OPER. RAD. FT.
BOOM PT. EL.	RATING LBS.	ANGLE	BOOM PT. EL.	RATING LBS.		
PER HITCH) REQUIRED						12
BOOM FOOT PIN.						15
						20
						25
						30
						35
						40
214.6	30,000	80	224.6	32,200		45
213.6	33,100	78	223.6	31,300		50
211.1	32,700	78	221.5	29,700		60
208.2	28,500	73	218.7	27,700		70
204.7	23,100	70	215.6	22,800		80
200.9	19,800	67	211.8	19,800		90
196.2	16,800	65	207.3	16,400		100
190.8	14,100	62	202.3	13,900		110
184.7	12,100	59	196.5	11,800		120
177.8	10,400	56	190.1	10,100		130
170.0	8,900	52	182.8	8,950		140
161.0	7,750	49	174.6	7,450		150
150.9	6,850	45	165.3	6,350		160
139.1	5,700	42	154.7	5,450		170
125.9	4,900	38	142.5	4,650		180
108.6	4,200	33	128.3	3,900		190

counterweight

for rear work areas with outriggers fully extended and set

130 FT. BOOM			140 FT. BOOM			150 FT. BOOM			160 FT. BOOM			170 FT. BOOM			180 FT. BOOM			190 FT. BOOM			200 FT. BOOM			OPER. RAD. FT.	
ANGLE	BOOM PT. EL.	RATING LBS.	ANGLE	BOOM PT. EL.	RATING LBS.	ANGLE	BOOM PT. EL.	RATING LBS.	ANGLE	BOOM PT. EL.	RATING LBS.	ANGLE	BOOM PT. EL.	RATING LBS.	ANGLE	BOOM PT. EL.	RATING LBS.	ANGLE	BOOM PT. EL.	RATING LBS.	ANGLE	BOOM PT. EL.	RATING LBS.		
																								12	
																									15
																									20
																									25
																									30
																									35
																									40
																									45
																									50
																									55
																									60
																									65
																									70
																									75
																									80
																									85
																									90
																									95
																									100
																									105
																									110
																									115
																									120
																									125
																									130
																									135
																									140
																									145
																									150
																									155
																									160
																									165
																									170

32R78

RATING PLATE SUPPLEMENTAL DATA

32R72 and 32R73

When assembling boom inserts, do not cantilever more than two inserts or 60 feet of inserts past point of pendant rope attachment to boom. Relocate point of attachments out on boom as additional inserts are added.

Maximum approved boom length for travel is 120 ft. or 90 ft. boom plus 60 ft. jib. Boom must be positioned over the rear of carrier and gantry must be in raised position for travel. All tires must be evenly inflated to 100 P.S.I.

32R74, 32R75, 32R76

Machine must be on a firm level, supporting surface. All tires must be 14:00 x 24-24 ply inflated to 100 P.S.I. Load must be restrained from swinging during travel. Maximum approved travel speed; with lifted load is 1.5 m.p.h.; with front bumper counterweight but without load is 5 m.p.h. Remove front bumper counterweight for travel speeds above 5 m.p.h. Maximum approved tire pressure for highway travel is 100 P.S.I.

Maximum boom and jib length to lift off ground, over side, is 190 + 50. Any combination greater than 190 + 50 must be lifted over rear. Locate jib backstay anchor as follows: 50 ft. to 90 ft. boom at base of boom tip section, 100 ft. to 200 ft. boom — at top of second insert below boom tip section.

P&H Type 4 wire rope: 6 x 25 with filler wire, preformed improved plow steel wire rope, 7 x 7 I.W.R.C.

P&H Type 25 wire rope: 6 x 25F I.W.R.C., preformed extra improved plow steel wire rope (filler wire).

Low gear operation may be required when front or rear drum is operated on 6th or 7th layer of cable.

WARNING: READ FOR SAFETY

Machine will tip over when upper is revolved over the side with boom lengths less than 80 ft. long, unless outriggers are fully extended and set.

When seven-eighths inch diameter P&H Type II wire rope (18 x 7 non-rotating preformed plow steel wire rope fiber core) is used for jib line, maximum lifted load including hook must not exceed 11,800 lbs. Do not use dead-end swivels on non-rotating wire rope.

P.S.I.

BOOM OVER REAR	130 FT. BOOM OVER SIDE	140 FT. BOOM OVER REAR	OPER. RAD. FT.
			12
			15
			20
			25
27,900	17.2	22,700	30
22,500	17.7	18,900	35
19,400	17.4	15,400	40
16,300	17.2	12,800	45
13,900	17.0	10,700	50
10,400	15.5	7,650	60
7,900	14.0	5,600	70
6,100	13.5	4,050	80
4,740	13.0	2,850	90
3,650	12.8	2,350	100

32R78

PCSA CLASS 12-509

with 18,500 lbs. counterweight

4 rated crane loads in pounds — main boom (62" w. x 62" d.) in over side and over rear

OPER. RAD. FT.	U. ANGLE	50 FT. BOOM		60 FT. BOOM		70 FT. BOOM		80 FT. BOOM		90 FT. BOOM		100 FT. BOOM		110 FT. BOOM		120 FT. BOOM		130 FT. BOOM		140 FT. BOOM		150 FT. BOOM		160 FT. BOOM		170 FT. BOOM		180 FT. BOOM							
		BOOM PT. EL.	RATING LBS.	BOOM PT. EL.	RATING LBS.	BOOM PT. EL.	RATING LBS.	BOOM PT. EL.	RATING LBS.	BOOM PT. EL.	RATING LBS.	BOOM PT. EL.	RATING LBS.	BOOM PT. EL.	RATING LBS.	BOOM PT. EL.	RATING LBS.	BOOM PT. EL.	RATING LBS.	BOOM PT. EL.	RATING LBS.	BOOM PT. EL.	RATING LBS.	BOOM PT. EL.	RATING LBS.	BOOM PT. EL.	RATING LBS.	BOOM PT. EL.	RATING LBS.						
12	82	57.4	200,000																																
15	79	57.4	200,000																																
20	73	56.2	161,100	76	66.6	161,100	78	76.8	160,900	79	87.0	160,700	80	97.2	151,800																				
25	68	54.3	106,400	71	65.1	106,300	73	75.6	106,100	76	85.9	105,800	77	96.2	105,600	79	106.4	105,300	80	116.6	105,000														
30	60	51.8	78,900	65	63.1	78,800	69	73.9	78,500	72	84.5	78,200	74	94.9	78,000	76	105.3	77,700	77	115.6	77,400	78	125.8	77,200	79	136.0									
35	53	48.5	62,300	60	60.5	62,100	65	71.8	61,900	68	82.7	61,600	71	93.4	61,400	73	103.9	61,100	74	114.3	60,800	76	124.7	60,600	77	135.1									
40	45	44.1	50,900	54	57.2	50,700	60	69.1	50,500	64	80.5	50,200	67	91.4	50,000	70	102.2	49,700	71	112.8	49,400	73	123.3	49,200	74	133.7									
45	36	38.1	43,000	48	53.1	42,800	55	65.9	42,600	60	77.8	42,300	64	89.2	42,000	66	100.2	41,800	69	111.0	41,500	71	121.6	41,300	72	132.1									
50	28	29.4	37,000	41	48.0	36,800	50	62.1	36,600	56	74.6	36,300	60	86.5	36,000	63	97.8	35,700	66	108.9	35,400	68	119.8	35,300	70	130.1									
60	18			23	31.4	28,500	38	51.5	28,200	46	66.5	28,000	52	79.7	27,700	57	92.0	27,400	60	103.8	27,100	63	115.2	26,900	65	126.1									
70	10						23	35.2	22,900	36	55.8	22,800	44	71.4	22,600	50	85.1	22,300	54	97.8	22,100	58	109.9	21,900	60	121.1									
80	6									21	37.1	18,900	34	59.0	18,600	42	75.3	18,300	47	89.6	18,000	52	102.8	17,900	55	115.1									
90	3											20	38.9	15,600	32	61.9	15,300	40	79.0	15,000	45	93.9	14,800	50	107.1										
100	1													19	40.5	13,000	31	64.7	12,700	38	82.5	12,500	43	97.1											
110																	10	42.1	10,800	29	67.3	10,700	37	85.1											
120																			17	43.6	9,200	28	69.1	9,100	36	83.1									
130																																			
140																																			
150																																			
160																																			
170																																			

WARNING:
WHEN BOOM IS EQUIPPED WITH JIB, MAIN HOOK RATING MUST BE REDUCED TO COMPENSATE FOR JIB ATTACHMENT WEIGHT.

JIB LENGTH	20 FT.	30 FT.	40 FT.	50 FT.	60 FT.
DEDUCT - LBS.	1,500	1,500	2,000	2,500	3,000

MAXIMUM BOOM LENGTH TO LIFT OFF GROUND						
BOOM OVER	WITHOUT FRONT BUMPER COUNTERWEIGHT				WITH 8,000 LBS. FRONT BUMPER COUNTERWEIGHT AND OUTRIGGERS SET	
	WITH OUTRIGGERS SET		WITHOUT OUTRIGGERS SET		BOOM ONLY	BOOM & JIB
SIDE	200	190 + 50	120	100 + 30	200	190 + 50
REAR	200	190 + 60	130	110 + 30	200	200 + 60

OPTIONAL AUXILIARY REAR FLOATS MAY BE USED IN PLACE OF 8,000 LBS. FRONT BUMPER COUNTERWEIGHT FOR ERECTING MAXIMUM BOOM LENGTH AS SPECIFIED IN CHART.

5 rated crane loads in pounds — main boom — without outriggers — tires at 100 p.s.i.

OPER. RAD. FT.	U. ANGLE	50 FT. BOOM		60 FT. BOOM		70 FT. BOOM		80 FT. BOOM		90 FT. BOOM		100 FT. BOOM		110 FT. BOOM		120 FT. BOOM		
		OVER SIDE	OVER REAR	OVER SIDE	OVER REAR	OVER SIDE	OVER REAR	OVER SIDE	OVER REAR	OVER SIDE	OVER REAR	OVER SIDE	OVER REAR	OVER SIDE	OVER REAR	OVER SIDE	OVER REAR	
12	82	60,000	72,500															
15	79	60,300	64,600	80	50,100	64,300												
20	73	38,700	50,400	76	38,500	50,100	78	38,200	49,800	79	37,300	49,400						
25	66	31,800	37,900	71	31,100	37,600	73	30,300	37,300	76	30,000	37,000	77	29,600	36,600	79	28,800	36,300
30	60	25,000	30,000	65	24,800	29,700	69	24,500	29,400	72	24,200	29,100	74	23,800	28,800	76	23,500	28,400
35	53	21,100	24,600	60	20,900	24,400	65	20,600	24,100	68	20,300	23,800	71	20,000	23,400	73	19,700	23,100
40	45	17,600	21,400	54	17,400	21,100	60	17,100	20,800	64	16,800	20,500	67	16,500	20,200	70	16,200	19,900
45	36	15,000	18,300	48	14,700	18,000	55	14,500	17,700	60	14,200	17,400	64	13,800	17,100	66	13,500	16,800
50	28	12,900	15,900	41	12,700	15,600	50	12,400	15,300	56	12,100	15,000	60	11,800	14,700	63	11,500	14,400
60	18			23	9,650	12,100	38	9,400	11,800	46	9,100	11,500	52	8,750	11,200	57	8,450	10,900
70	10						23	7,300	9,350	36	7,000	9,050	44	6,650	8,750	50	6,350	8,400
80	6									21	5,450	7,250	34	5,150	6,950	42	4,800	6,600
90	3											20	3,950	5,550	32	3,650	5,200	
100	1												19	2,700	4,150	31	2,400	3,800

PCSA CLASS 12-493

with 15 ft. hammerhead tip section and 18,500 lbs. cc

6. rated crane loads in pounds

Maximum approved boom length for travel is 120 ft. or 90 ft. boom and 60 ft. jib. All tires must be evenly inflated to 100 P.S.I. Boom must be positioned over rear of carrier. Gantry must be in raised position to travel with boom attached.

This rating plate applies only for booms equipped with a 15 ft. hammerhead tip section.

Refer to pages 4, 6-11 for additional information.

OPER. RAD. FT.	ANGLE	40 FT. BOOM		ANGLE	50 FT. BOOM		ANGLE	120 FT. BOOM
		OVER SIDE	OVER REAR		OVER SIDE	OVER REAR		
12	83	58,000	71,800					
15	78	48,800	63,400	81	48,000	63,000		
20	71	37,400	48,100	75	37,200	48,800		
25	63	30,400	38,800	68	29,200	38,200		
30	54	24,800	28,600	62	24,300	28,300		
35	44	19,700	24,000	56	19,400	23,700		
40	31	16,200	19,800	48	16,800	19,800		
45				39	13,200	16,800		
50				27	11,200	14,100		
60								
70								
80								
90								
100								

WARNING: When operating to tire deflection. This is

MAXIMUM BOOM LENGTH TO LIFT OFF GROUND				
BOOM OVER SIDE	WITH OUTRIGGERS SET		WITHOUT OUTRIGGERS SET	
	BOOM ONLY	BOOM & JIB	BOOM ONLY	BOOM & JIB
REAR	180	140 + 60	100	90 + 60
FRONT	180	140 + 60	120	90 + 60

7. rated crane loads in pounds — main boom (62" w. x 62" d.) in over

OPER. RAD. FT.	ANGLE	40 FT. BOOM		ANGLE	50 FT. BOOM		ANGLE	60 FT. BOOM		ANGLE	70 FT. BOOM		ANGLE	80 FT. BOOM		ANGLE	90 FT. BOOM	
		BOOM PT. EL.	RATING LBS.		BOOM PT. EL.	RATING LBS.		BOOM PT. EL.	RATING LBS.		BOOM PT. EL.	RATING LBS.		BOOM PT. EL.	RATING LBS.		BOOM PT. EL.	RATING LBS.
12	83	48.9	250,000															
15	78	48.8	210,000	81	58.7	195,100	82	68.7	188,500									
20	71	47.5	159,800	75	57.6	159,800	77	68.0	159,500	78	78.2	159,400	81	88.3	157,900			
25	63	45.8	104,800	69	56.4	104,700	72	66.8	104,800	75	77.2	104,500	77	87.4	104,200	78	97.8	104,000
30	54	42.8	77,400	62	54.3	77,200	67	65.2	77,100	71	75.8	77,000	73	86.3	76,700	76	96.8	76,400
35	44	38.2	60,700	55	51.3	60,500	62	63.0	60,400	68	74.0	60,300	69	84.7	60,000	72	95.2	59,800
40	31	31.1	49,400	48	47.3	49,000	55	60.0	49,200	62	71.8	48,000	65	82.7	48,800	68	93.5	48,600
45				39	41.8	41,200	50	56.3	41,100	57	68.7	41,000	61	80.3	40,700	65	91.8	40,500
50				27	33.4	38,200	43	61.4	35,100	51	65.1	38,000	57	77.4	34,700	61	89.0	34,600
60							25	35.5	28,800	40	65.1	28,800	48	69.7	28,300	54	82.7	28,100
70										24	39.3	21,800	38	59.5	21,000	46	74.7	21,100
80													23	41.2	17,300	35	62.7	17,000
90																21	49.0	14,000
100																		
110																		
120																		
130																		
140																		
150																		
160																		

WARNING:
WHEN BOOM IS EQUIPPED WITH JIB, MAIN HOOK RATING MUST BE REDUCED TO COMPENSATE FOR JIB ATTACHMENT WEIGHT.

JIB LENGTH	20 FT.	30 FT.	40 FT.	50 FT.	60 FT.
DEDUCT LBS.	1,500	1,500	2,000	2,500	3,000

Counterweight

Booms — main boom — without outriggers — tires at 100 p.s.i.

OPER. RAD. FT.	80 FT. BOOM			70 FT. BOOM			80 FT. BOOM			90 FT. BOOM			100 FT. BOOM			110 FT. BOOM			120 FT. BOOM			
	OVER SIDE	OVER REAR	ANGLE	OVER SIDE	OVER REAR	ANGLE	OVER SIDE	OVER REAR	ANGLE	OVER SIDE	OVER REAR	ANGLE	OVER SIDE	OVER REAR	ANGLE	OVER SIDE	OVER REAR	ANGLE	OVER SIDE	OVER REAR	ANGLE	
12																						
15																						
20																						
25																						
30																						
35																						
40																						
45																						
50																						
60																						
70																						
80																						
90																						
100																						

32R73

Operating crane "without outriggers" loads lifted over rear and swung over side, will increase in radius due to increase in radius must be compensated for by raising boom, or machine may tip over.

Over side and over rear work areas with outriggers fully extended and set

OPER. RAD. FT.	100 FT. BOOM		110 FT. BOOM		120 FT. BOOM		130 FT. BOOM		140 FT. BOOM		150 FT. BOOM		160 FT. BOOM	
	BOOM PT. EL.	RATING LBS.	BOOM PT. EL.	RATING LBS.	BOOM PT. EL.	RATING LBS.	BOOM PT. EL.	RATING LBS.	BOOM PT. EL.	RATING LBS.	BOOM PT. EL.	RATING LBS.	BOOM PT. EL.	RATING LBS.
12														
15														
20														
25														
30														
35														
40														
45														
50														
60														
70														
80														
90														
100														
110														
120														
130														
140														
150														
160														

32R73

PCSA CLASS 12-607

with 15 ft. hammerhead tip section and 35,500 lbs. counterweight

(ratings shown are based on a counterweight of 18,500 lbs. and 17,0

8. rated crane loads in pounds — main boom (62" w x 62" d.) in over side and over

OPER. RAD. FT.	ANGLE	40 FT. BOOM		ANGLE	50 FT. BOOM		ANGLE	60 FT. BOOM		ANGLE	70 FT. BOOM		ANGLE	80 FT. BOOM		ANGLE	90 FT. BOOM		ANGLE	100 FT.	
		BOOM PT. EL.	RATING LBS.		BOOM PT. EL.	RATING LBS.		BOOM PT. EL.	RATING LBS.		BOOM PT. EL.	RATING LBS.		BOOM PT. EL.	RATING LBS.		BOOM PT. EL.	RATING LBS.		BOOM PT. EL.	RATING LBS.
12	83	48.9	260,000								RATINGS ABOVE HEAVY LINE ARE LIMITED BY STRENGTH OF MATERIALS.										
15	78	48.6	210,000	81	58.7	195,100	82	68.7	188,500												
20	71	47.5	170,000	75	57.8	169,400	77	68.0	169,000	79	78.2	168,600	81	88.3	157,900						
25	63	45.8	128,700	69	56.4	128,800	72	66.9	128,500	75	77.2	128,300	77	87.4	128,000	78	97.8	125,800	80	107.8	
30	54	42.6	93,900	62	54.3	93,700	67	65.2	93,600	71	75.6	93,400	73	88.3	93,200	75	98.6	92,900	77	108.8	
35	44	38.2	74,100	55	51.3	73,800	62	63.0	73,800	66	74.0	73,700	68	84.7	73,400	72	95.2	73,200	74	105.8	
40	31	31.1	60,700	48	47.3	60,700	56	60.0	60,500	62	71.8	60,400	65	82.7	60,100	68	93.2	59,800	71	104.1	
45				38	41.8	51,200	50	58.3	51,000	57	68.7	50,900	61	80.3	50,800	65	91.5	50,300	68	102.3	
50				27	33.4	44,000	43	51.4	43,900	51	65.1	43,700	57	77.4	43,400	61	89.0	43,200	64	100.2	
60							25	35.5	33,800	40	55.1	33,800	48	69.7	33,300	54	82.7	33,100	58	94.7	
70										23	37.4	25,900	37	58.4	26,800	45	74.0	26,400	50	87.5	
80													23	41.2	22,300	35	62.7	22,100	43	78.8	
90																21	43.0	18,400	33	65.7	
100																			20	44.7	
110																					
120																					
130																					
140																					
150																					
160																					

WARNING:
WHEN BOOM IS EQUIPPED WITH JIB MAIN HOOK RATING MUST BE REDUCED TO COMPENSATE FOR JIB ATTACHMENT WEIGHT

JIB LENGTH DEDUCT LBS.	20 FT.	30 FT.	40 FT.	50 FT.	60 FT.
1500	1500	2000	2500	3000	

jib ratings, drum data, reeving and boom mal

Jib crane ratings are based on strength of materials. When main boom load rating at operating radius is less than maximum jib ratings stability governs and the lower value of main boom load rating must be used. Jibs are intended to increase lifting height — not operating radius — therefore maximum jib operating radius is limited to maximum rated radius of boom length on which jib is mounted.

MAXIMUM JIB (24" W x 22" D) RATINGS FOR LIFTING CRANE SERVICE — LBS.					
SEVEN-EIGHTS INCH DIA. P&H TYPE 4 WIRE ROPE					
* USE TWO PARTS OF LINE FOR LOADS ABOVE 19,500 LBS.					
OFFSET ANGLE JIB TO BOOM	20 FT. JIB	30 FT. JIB	40 FT. JIB	50 FT. JIB	60 FT. JIB
UNDER FULL LOAD					
10°	22,000*	20,000*	16,000	12,000	8,000
20°	18,000	14,500	12,000	9,500	7,000
30° MAX.	13,000	11,000	8,500	7,000	6,000
MAXIMUM JIB RATINGS FOR BUCKET SERVICE — LBS.					
10°	18,500	16,000	12,800	9,800	6,400
20°	12,800	11,800	9,800	7,800	5,600
30° MAX.	10,400	8,800	6,800	5,600	4,800

This P & H Model B115-TC meets the requirements of ANSI B30.5-1968. Boom structure has been tested per SAE J987. Machine stability has been tested per SAE J765.

WARNING

Using this equipment in excess of rated loads, in areas of chart not rated, or with disregard of instructions will result in unsafe operating conditions and is a violation of the U.S. Dept. of Labor Safety and Health Regulations for Construction.

weight
 (17,000 lbs.)

over rear work areas with outriggers fully extended and set

100 FT. BOOM		110 FT. BOOM		120 FT. BOOM		130 FT. BOOM		140 FT. BOOM		150 FT. BOOM		160 FT. BOOM		OPER. RAD. FT.						
BOOM PT. EL.	RATING LBS.	ANGLE	BOOM PT. EL.	RATING LBS.	ANGLE	BOOM PT. EL.	RATING LBS.	ANGLE	BOOM PT. EL.	RATING LBS.	ANGLE	BOOM PT. EL.	RATING LBS.							
MAXIMUM BOOM LENGTH ON WHICH A JIB CAN BE MOUNTED IS 140 FT. MAXIMUM BOOM AND JIB TO LIFT OFF GROUND OVER SIDE OR REAR IS 140 FT. 60 FT. LOCATE JIB BACKSTAY ANCHOR AS FOLLOWS: 50 FT. TO 70 FT. - TO TOP OF FIRST INSERT BELOW BOOM TIP SECTION; 80 FT. TO 140 FT. BOOM - AT TOP END OF SECOND INSERT BELOW BOOM TIP SECTION.														12						
107.8	125,500													25						
106.8	92,800	78	117.0	82,500	79	127.2	92,000	80	137.3	88,300				30						
105.8	72,800	75	116.0	72,800	76	126.2	72,500	78	136.4	72,200	78	146.6	71,800	79	156.8	68,400	80	166.9	62,800	35
104.1	59,600	72	114.6	59,400	74	125.0	59,200	75	135.3	58,900	76	145.6	58,600	77	155.8	58,200	78	166.0	56,100	40
102.3	50,000	70	113.0	49,900	71	123.5	49,600	73	134.0	49,600	74	144.4	49,300	75	154.7	49,000	76	165.0	48,800	45
100.2	42,900	67	111.1	42,800	69	121.8	42,800	71	132.4	42,300	72	142.9	42,000	73	153.4	41,700	74	163.7	41,500	50
94.7	32,700	61	106.3	32,700	64	117.8	32,400	66	126.6	32,100	68	139.4	31,800	69	150.1	31,500	71	160.7	31,300	60
87.5	26,000	55	100.1	26,900	58	112.1	26,700	61	123.7	26,400	63	134.9	25,100	65	146.0	24,700	67	156.9	24,600	70
78.8	21,700	48	92.8	21,700	53	105.8	21,400	56	118.0	21,100	59	129.9	20,900	61	141.4	20,600	63	152.7	20,400	80
66.7	18,100	41	82.5	18,000	46	97.2	17,800	50	110.6	17,500	54	123.3	17,200	57	135.4	16,900	59	147.2	16,700	90
44.7	15,300	32	68.5	15,200	39	86.1	15,000	44	101.3	14,800	48	115.2	14,400	52	128.2	14,000	55	140.7	13,900	100
		19	46.2	13,000	30	71.2	12,700	37	88.5	12,400	43	108.2	12,100	47	119.5	11,800	50	133.0	11,800	110
					18	47.8	10,900	29	73.8	10,600	36	92.8	10,300	41	106.0	10,000	45	123.8	9,800	120
								17	49.2	9,050	28	76.2	8,800	35	95.9	8,450	40	112.6	8,250	130
											17	50.8	7,500	27	78.6	7,150	34	98.8	7,000	140
												16	51.8	6,100	26	80.9	5,900	150		150
												16	53.2	5,000				160		160

32R72

make-up

standard boom

MAIN HOIST DRUM RATED LOADS FOR ONE INCH DIA. P&H TYPE 4 WIRE ROPE										
NUMBER OF PARTS OF MAIN HOIST REEVING	1	2	3	4	5	6	7	8	9	10
MAXIMUM LOAD - LBS.	23,000	46,000	69,000	92,000	115,000	138,000	161,000	184,000	207,000	230,000

hammerhead boom

MAIN HOIST DRUM RATED LOADS FOR ONE INCH DIA. P&H TYPE 4 WIRE ROPE										
NUMBER OF PARTS OF MAIN HOIST REEVING	1	2	3	4	5	6	7	8	9	10
MAXIMUM LOAD - LBS.	23,000	46,000	69,000	92,000	115,000	138,000	161,000	184,000	207,000	250,000

standard boom

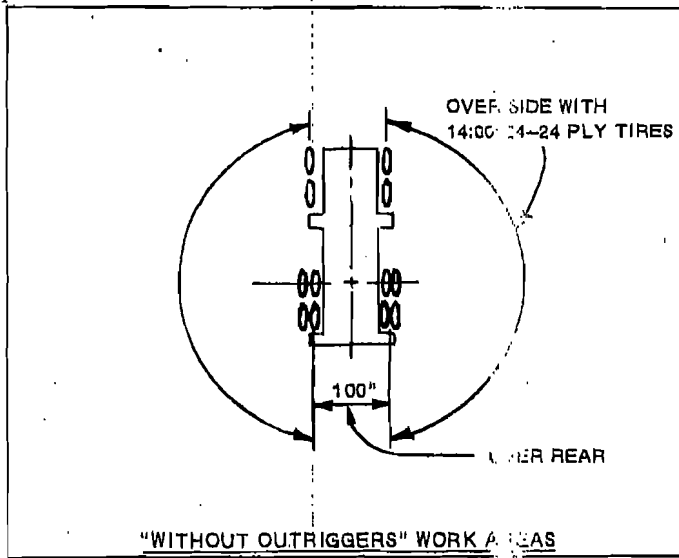
BOOM LENGTH FT.	INSERT ARRANGEMENT
90	BASE-A-C-TIP
100	BASE-C-B-TIP
110	BASE-A-C-B-TIP
120	BASE-D-B-TIP
130	BASE-C-D-TIP
140	BASE-A-C-D-TIP
150	BASE-B-C-D-TIP
160	BASE-A-B-C-D-TIP
170	BASE-B-D-D-TIP
180	BASE-C-D-D-TIP
190	BASE-D-A-C-D-TIP
200	BASE-D-B-D-TIP
210	BASE-D-A-D-D-TIP
220	BASE-D-B-D-D-TIP

BASE SECTION IS 15 FT.; TIP SECTION IS 25 FT.
 INSERTS ARE: A=10 FT.; B=20 FT.; C=30 FT.; D=50 FT.

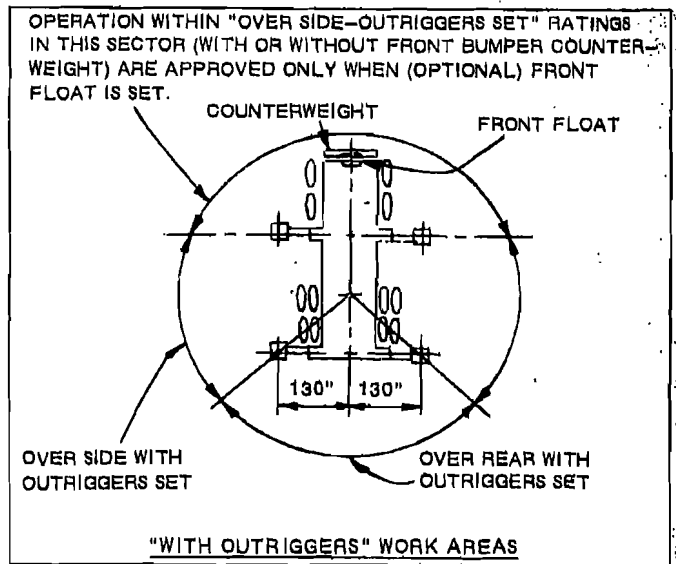
hammerhead boom

BOOM LENGTH FT.	INSERT ARRANGEMENT
90	BASE-B-C-TIP
100	BASE-A-B-C-TIP
110	BASE-B-D-TIP
120	BASE-C-D-TIP
130	BASE-A-C-D-TIP
140	BASE-B-C-D-TIP
150	BASE-A-B-C-D-TIP
160	BASE-B-D-D-TIP

BASE SECTION IS 25 FT.; TIP SECTION IS 15 FT.
 INSERTS ARE: A=10 FT.; B=20 FT.; C=30 FT.; D=50 FT.



32R76



32R76

ALL TIRES MUST BE 14:00 x 24-24 PLY FOR OVER REAR WITHOUT OUTRIGGER LIFTS.

OPER. RAD.FT.	TIRE PLY	W.L.S.S.	"A" INCHES
13	14	15	18
15	14	15	36
17-20	14	15	60
25-40	14	15	60

NOTE: For loads of 78,200 lbs. or less, maximum swing area is 50 inches from longitudinal ϵ of carrier at all operating radii with 125 P.S.I. tire pressure. For loads of 50,300 lbs. or less, maximum swing area is 50 inches from longitudinal ϵ of carrier at all operating radii with 100 P.S.I. tire pressure.

8,000 POUNDS COUNTERWEIGHT

LONGITUDINAL ϵ OF CARRIER

OVER REAR WITH OUTRIGGERS SET

OVER REAR WITHOUT OUTRIGGERS SET

OVER REAR WORK AREA WITH 8,000 LBS. FRONT BUMPER COUNTERWEIGHT INSTALLED

32R76

AREAS OF OPERATION

NOTE: OPERATION OF THIS EQUIPMENT IN EXCESS OF LOAD RATINGS AND DISREGARD OF INSTRUCTIONS VOIDS THE WARRANTY.

standard boom

RECOMMENDED WIRE ROPE LENGTH FOR DRUMS - FT.		
BOOM LENGTH FT.	MAIN HOIST DRUM	JIB HOIST DRUM
50	620	270
60	665	300
70	690	330
80	695	360
90	775	390
100	750	420
110	705	450
120	765	480
130	690	510
140	740	540
150	790	570
160	675	600
170	715	630
180	755	660
190	795	690
200	630	720
210	660	—
220	690	—

hammerhead boom

RECOMMENDED WIRE ROPE LENGTH FOR DRUMS - FT.		
BOOM LENGTH FT.	MAIN HOIST DRUM	JIB HOIST DRUM
50	510	—
60	565	270
70	665	300
80	615	330
90	695	360
100	680	390
110	750	420
120	705	450
130	765	480
140	690	510
150	740	540
160	635	—
180	675	—

standard boom

OPER. RAD. FT.	RATED LOADS IN POUNDS - MAIN BOOM					
	CLAMHELL 2.5 CU. YDS. MAX.			DRAGLINE 2.5 CU. YDS. MAX.		
	50 FT. BOOM	60 FT. BOOM	70 FT. BOOM	50 FT. BOOM	60 FT. BOOM	60 FT. BOOM
20	20,000	20,000	—	—	—	—
25	20,000	20,000	18,850	—	—	—
30	19,920	19,760	16,100	—	—	—
35	16,800	16,640	15,050	—	—	—
40	14,000	13,840	13,680	15,750	—	—
45	11,920	11,760	11,520	13,410	13,320	—
50	10,240	10,080	9,920	11,520	11,340	—
60	—	7,680	7,480	—	—	8,640
70	—	—	5,800	—	—	—

Clamshell ratings shown also apply to magnet, grapple and all other material handling buckets except dragline which is raised separately.

For clamshell and magnet operations, the weight of bucket or magnet is considered a part of the load and the total weight of bucket plus contents or magnet plus load must not exceed the corresponding ratings shown.