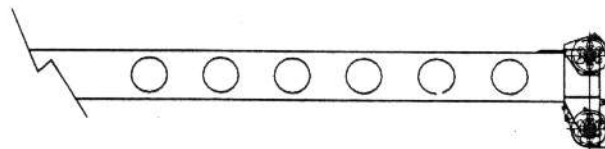


RATED LOAD ON OUTRIGGERS

LOAD RADIUS (FT)	LOADED BOOM ANGLE (DEG)	OVER REAR (LB)	360° (LB)	LOAD RADIUS (FT)	LOADED BOOM ANGLE (DEG)	OVER REAR (LB)	360° (LB)	LOAD RADIUS (FT)	LOADED BOOM ANGLE (DEG)	OVER REAR (LB)	360° (LB)
BOOM LENGTH 30 FT				BOOM LENGTH 39 FT				BOOM LENGTH 50 FT			
10.0	62.5	60000*	60000*	10.0	69.1	46500*	46500*				
12.0	58.1	49300*	49300*	12.0	65.9	46200*	46200*	12.0	71.4	43600*	43600*
15.0	51.0	39100*	39100*	15.0	60.9	39900*	39900*	15.0	67.7	37700*	37700*
20.0	37.0	27500*	27500*	20.0	51.9	28300*	28300*	20.0	61.4	28900*	28900*
25.0	13.2	20400*	19800	25.0	41.7	21300*	21000	25.0	54.5	21900*	21500
25.6	.0	19600*	18600	30.0	28.5	16600*	14500	30.0	47.0	17200*	15100
				34.3	.0	13500*	10700	35.0	38.4	13900*	11200
								40.0	27.6	11200	8400
BOOM LENGTH 61 FT				BOOM LENGTH 72 FT				45.0	7.6	8900	6400
								45.3	.0	8700	6200
15.0	71.9	35900*	35900*					BOOM LENGTH 83 FT			
20.0	66.9	29200*	29200*	20.0	70.6	27300*	27300*				
25.0	61.6	22200*	21800	25.0	66.3	22500*	22000	25.0	69.6	18900*	18900*
30.0	56.1	17600*	15400	30.0	61.8	17800*	15600	30.0	65.9	15800*	15700
35.0	50.2	14200*	11400	35.0	57.2	14500*	11600	35.0	62.0	13700*	11700
40.0	43.7	11600	8800	40.0	52.3	11800	9000	40.0	58.0	11900	9100
45.0	36.2	9300	6900	45.0	47.0	9600	7100	45.0	53.8	9700	7200
50.0	27.1	7600	5400	50.0	41.2	7900	5600	50.0	49.4	8000	5800
55.0	12.8	6200	4200	55.0	34.7	6500	4500	55.0	44.6	6700	4600
56.3	.0	5800	3900	60.0	26.7	5400	3500	60.0	39.4	5600	3700
BOOM LENGTH 94 FT				65.0	15.3	4400	2800	65.0	33.5	4700	3000
				67.3	.0	4000	2400	70.0	26.4	3900	2300
25.0	72.1	15200*	15200*					75.0	16.8	3200	1800
30.0	68.8	13000*	13000*					78.3	.0	2800	1400
35.0	65.5	11300*	11300*								
40.0	62.1	9900*	9200								
45.0	58.6	8700*	7300								
50.0	54.9	7800*	5800								
55.0	51.1	6800	4700								
60.0	47.0	5700	3800								
65.0	42.7	4800	3100								
70.0	37.9	4000	2500								
75.0	32.5	3400	1900								
80.0	26.2	2800	1400								
85.0	18.0	2300	1000								
89.3	.0	1900	700								



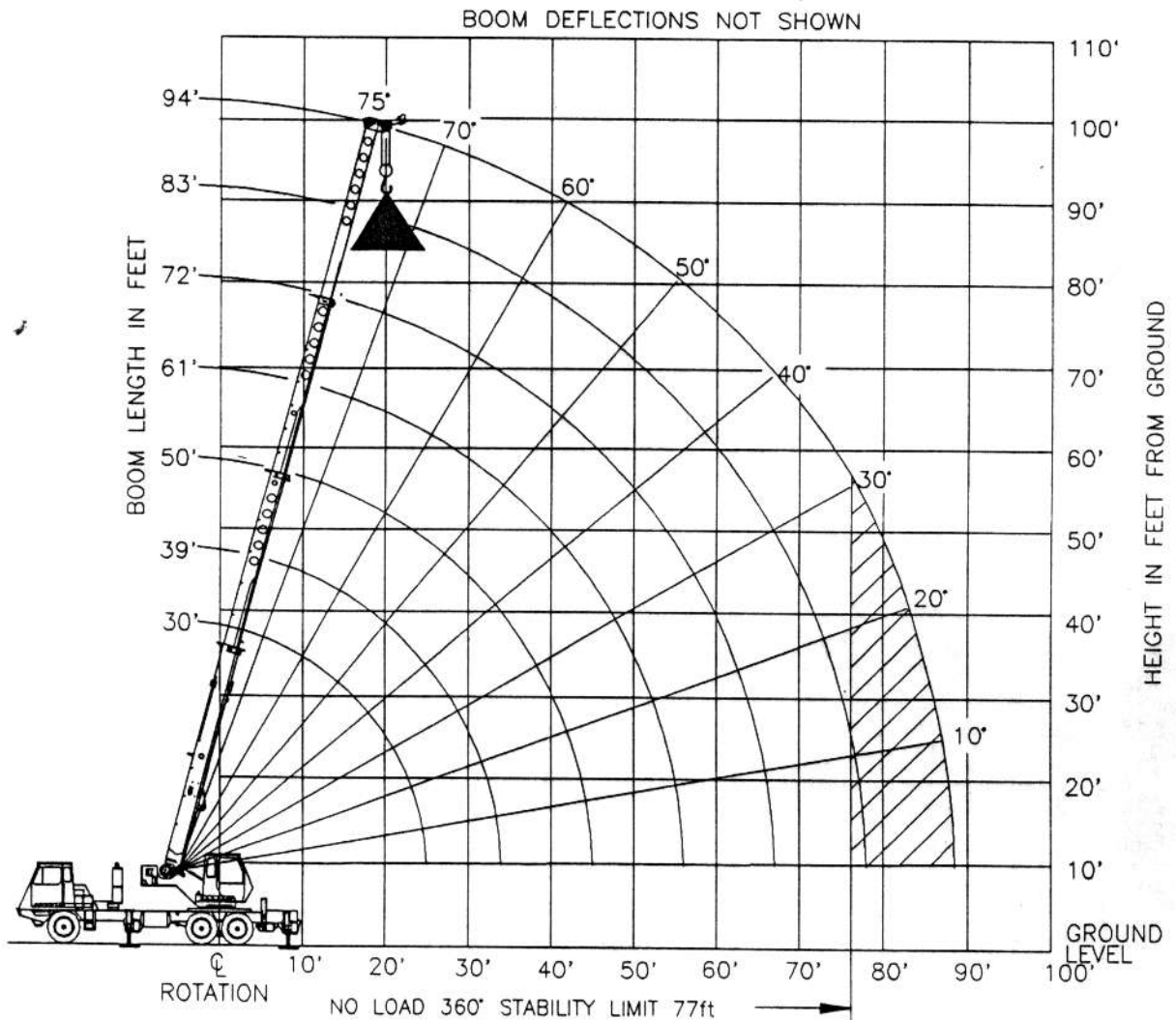
Add 100Lbs to the chart values if the AUX BOOM HEAD SHEAVE is NOT ERECTED.

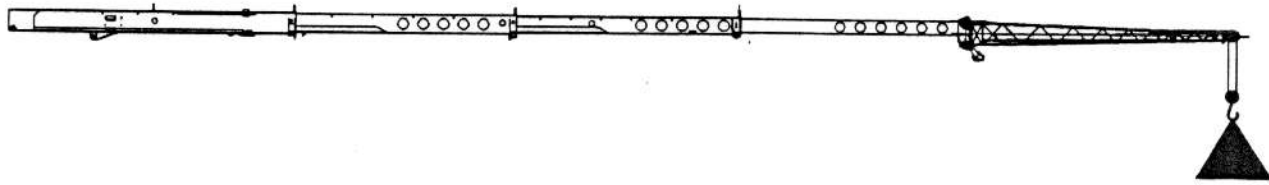
SET-UP:

1. Crane load ratings are based on the crane being leveled and standing on a firm, uniform supporting surface.
2. Crane load ratings on outriggers are based on all outrigger beams being fully extended and the tires raised free of the supporting surface.

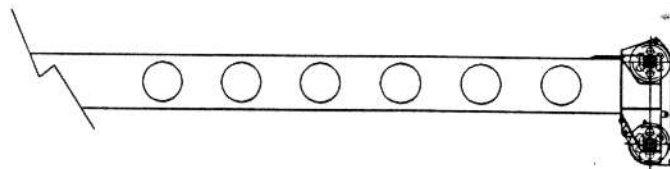
OPERATION:

1. CRANE LOAD RATINGS MUST NOT BE EXCEEDED. DO NOT ATTEMPT TO TIP THE CRANE TO DETERMINE ALLOWABLE LOADS.
2. When either radius or boom length, or both, are between listed values, the smaller of the two listed load ratings shall be used.
3. Do not operate at longer radii than those listed on the applicable load rating chart (cross hatched areas shown on range diagrams) as tipping can occur without a load on the hook.
4. The boom angles shown on the Capacity Chart give an approximation of the operating radius for a specified boom length. The boom angle, before loading, should be greater to account for boom deflection. It may be necessary to retract the boom if maximum boom angle is insufficient to maintain rated radius.
5. Power telescoping boom sections must be extended equally.





26 FT OFFSET JIB						
LOADED BOOM ANGLE (DEG)	0' OFFSET		15' OFFSET		30' OFFSET	
	LOAD RADIUS (REF) (FT)	360° (LB)	LOAD RADIUS (REF) (FT)	360° (LB)	LOAD RADIUS (REF) (FT)	360° (LB)
75	34'-11"	9,000*	40'-2"	7,300*	45'-0"	5,500*
73	38'-8"	8,500*	44'-2"	6,700*	48'-9"	5,200*
71	43'-2"	8,000*	48'-6"	6,200*	53'-2"	4,900*
68	48'-10"	7,200*	53'-9"	5,600*	57'-10"	4,500*
65	54'-10"	4,800*	59'-7"	4,800*	63'-7"	4,000*
62	59'-8"	3,300	64'-2"	3,200	67'-11"	3,500
59	64'-9"	2,700	69'-6"	2,400	73'-2"	2,500
55	71'-4"	2,100	75'-11"	1,800	78'-6"	1,700
51	76'-11"	1,600	81'-1"	1,200	83'-11"	1,100
47	83'-0"	1,000				




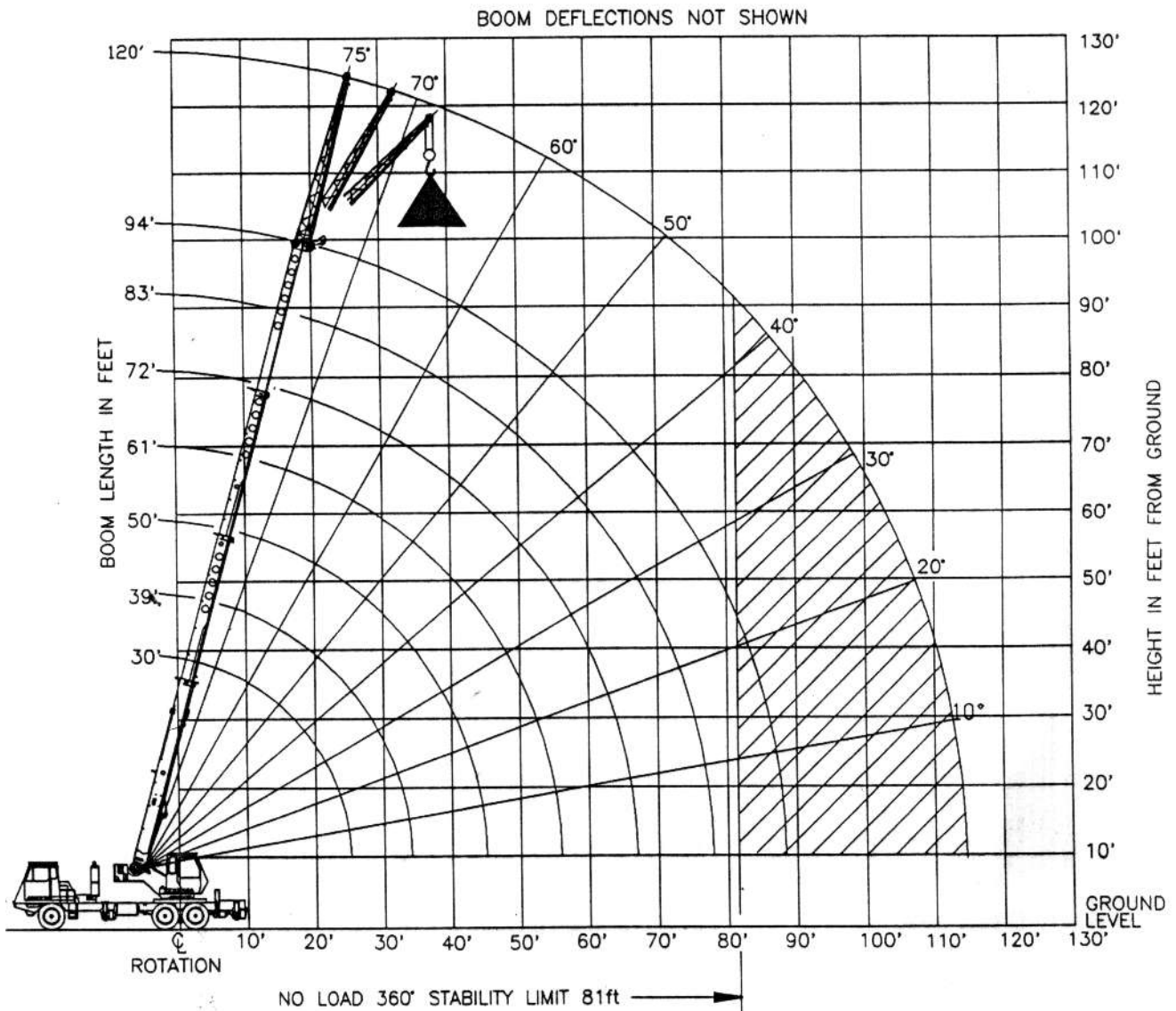
Add 100Lbs to the chart values if the AUX BOOM HEAD SHEAVE is NOT ERECTED.

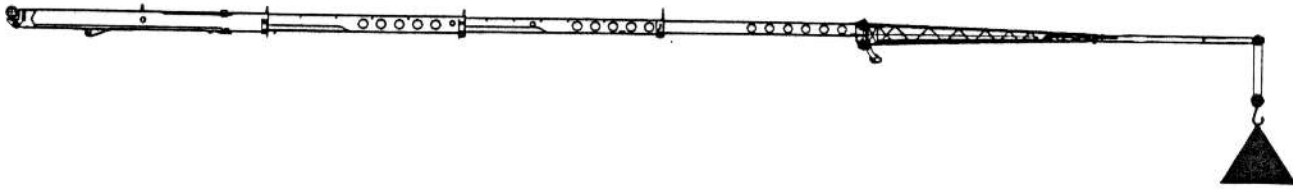
SET-UP:

1. Crane load ratings are based on the crane being leveled and standing on a firm, uniform supporting surface.
2. Crane load ratings on outriggers are based on all outrigger beams being fully extended and the tires raised free of the supporting surface.

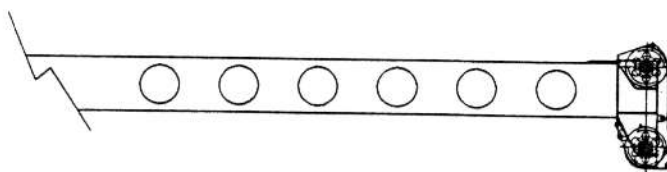
OPERATION:

1. CRANE LOAD RATINGS MUST NOT BE EXCEEDED. DO NOT ATTEMPT TO TIP THE CRANE TO DETERMINE ALLOWABLE LOADS.
2. When either radius or boom angle, or both, are between listed values, the smaller of the two listed load ratings shall be used.
3. Do not operate at longer radii than those listed on the applicable load rating chart (cross hatched  areas shown on range diagrams) as tipping can occur without a load on the hook.
4. The boom angles shown on the Capacity Chart give an approximation of the operating radius for a fully extended boom. The boom angle, before loading, should be greater to account for boom deflection. It may be necessary to retract the boom if maximum boom angle is insufficient to maintain rated radius.
5. Power telescoping boom sections must be extended equally.
6. For all boom lengths less than the maximum with the jib erected, the rated loads are determined by boom angle only in the appropriate column.
7. For boom angles not shown, use the capacity of the next lower angle.
8. Listed radii are for fully extended boom only.





43 FT OFFSET JIB						
LOADED BOOM ANGLE (DEG)	0' OFFSET		15' OFFSET		30' OFFSET	
	LOAD RADIUS (REF) (FT)	360' (LB)	LOAD RADIUS (REF) (FT)	360' (LB)	LOAD RADIUS (REF) (FT)	360' (LB)
75	39'-11"	5000*	49'-6"	3200*	57'-7"	2400*
73	45'-1"	4800*	54'-1"	3100*	61'-9"	2300*
71	50'-6"	4600*	59'-5"	2900*	66'-11"	2200*
68	56'-5"	4300*	64'-8"	2700*	71'-10"	2100*
65	64'-2"	3900*	72'-3"	2500*	78'-10"	2100*
62	69'-7"	2600	77'-4"	2000	83'-6"	2000
59	76'-0"	2000	83'-6"	1600	89'-3"	1600
55	83'-6"	1400	90'-1"	1100	95'-6"	1100




Add 100Lbs to the chart values if the AUX BOOM HEAD SHEAVE is NOT ERECTED.

SET-UP:

1. Crane load ratings are based on the crane being leveled and standing on a firm, uniform supporting surface.
2. Crane load ratings on outriggers are based on all outrigger beams being fully extended and the tires raised free of the supporting surface.

OPERATION:

1. CRANE LOAD RATINGS MUST NOT BE EXCEEDED. DO NOT ATTEMPT TO TIP THE CRANE TO DETERMINE ALLOWABLE LOADS.
2. When either radius or boom angle, or both, are between listed values, the smaller of the two listed load ratings shall be used.
3. Do not operate at longer radii than those listed on the applicable load rating chart (cross hatched  areas shown on range diagrams) as tipping can occur without a load on the hook.
4. The boom angles shown on the Capacity Chart give an approximation of the operating radius for a fully extended boom. The boom angle, before loading, should be greater to account for boom deflection. It may be necessary to retract the boom if maximum boom angle is insufficient to maintain rated radius.
5. Power telescoping boom sections must be extended equally.
6. For all boom lengths less than the maximum with the jib erected, the rated loads are determined by boom angle only in the appropriate column.
7. For boom angles not shown, use the capacity of the next lower angle.
8. Listed radii are for fully extended boom only.

BOOM DEFLECTIONS NOT SHOWN

