

Masts / Reactions

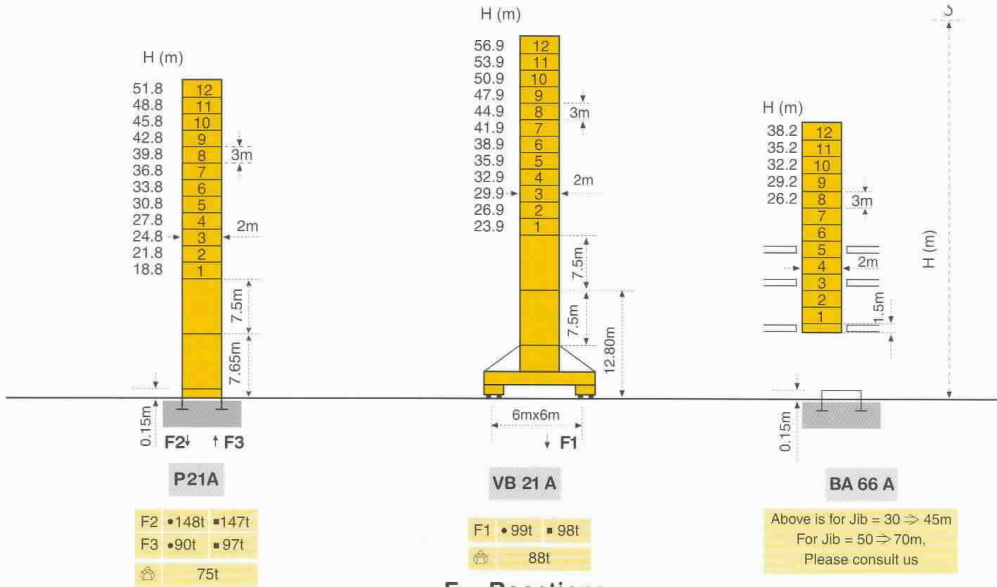
Masts



2m

Jib

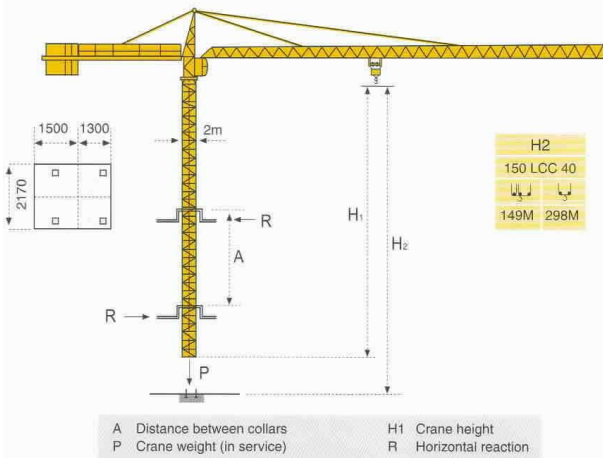
30m ⇒ 70m



F = Reactions

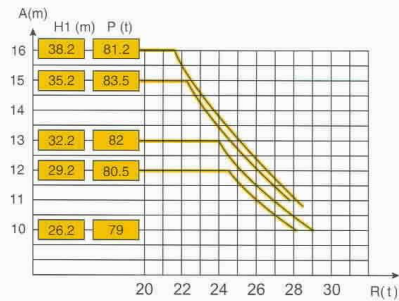
- In service
- Out of service
- ☐ Without load and ballast with longest jib and maximum height

Climbing crane

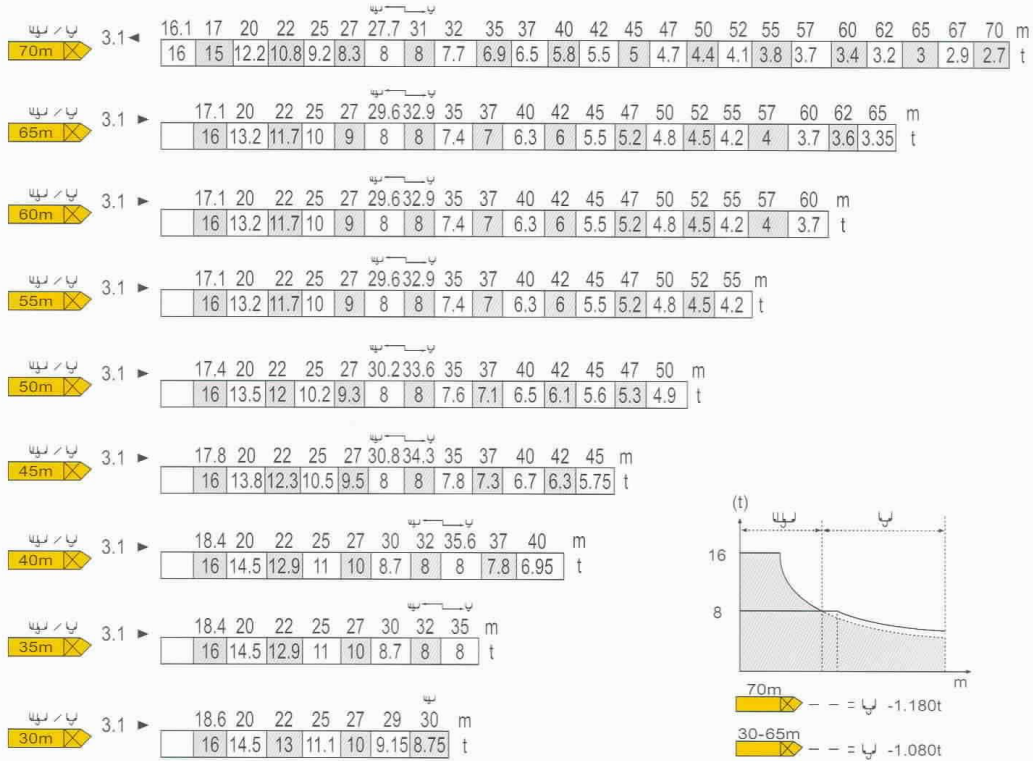


A Distance between collars
 P Crane weight (in service)
 H1 Crane height
 R Horizontal reaction

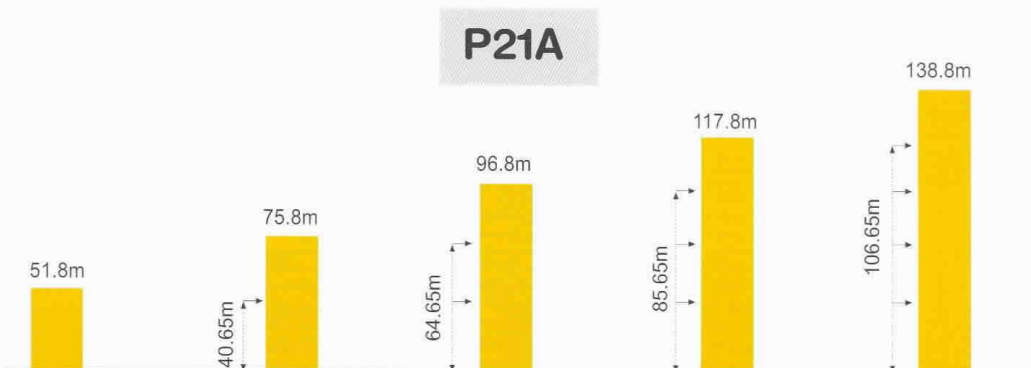
BA 66 A









Load diagrams



Anchorage



Mechanisms

		m/min	t	m/min	t	ch-Ps hp	kW	
Hoisting	 150 LCC 40	↑		↓		150	110	596m
		68 ↓ 82 ↓ 102 ↓ 136 ↓ 162	8 6 4 2 1	34 ↓ 41 ↓ 51 ↓ 68 ↓ 81	16 12 8 4 2			
Trolleying	 6 DVF 6	0 ⇒ 42 m/min (16t)		0 ⇒ 84 m/min (8t)		5.5	4	
		0 ⇒ 100 m/min (4t)						
Slewing	 RVF 162	0 ⇒ 0.7 tr/min (rpm)				2 x 7.5	2 x 5.5	
Travelling	VB 20A VB 21A  R ≥ 13m RT 544 A1 2V	13.5 ⇒ 27 m/min				4 x 7	4 x 5.2	
CEI 38  IEC 38		kVA		Generator set				
400V (+6% – 10%) 50Hz		150LCC : 175 kVA		*				

* Please consult us.

Subject to Modification



GROVE
POTAIN 

Manitowoc Crane Group Asia Pte Ltd
Manitowoc Crane Group


26 Benoi Road
Singapore 629 898
Tel: 65-6861 7133
Fax (Admin/Sales) : 65-6862 4040
Fax (Service/Parts) : 65-6862 4142
www.manitowoccrane.com

Copyright. © POTAIN 2003

MC 310 K16

Ref: 2003.06

Manitowoc
Crane Group

 Company