

USTC INCORPORATED YORK, PA.
MODEL 28L-RATED LIFTING CAPACITIES IN POUNDS
PCSA-RATING 5-70

LOAD RADIUS FEET	BOOM LENGTH IN FEET									
	BOOM ANGLE	29	BOOM ANGLE	45	BOOM ANGLE	61	BOOM ANGLE	77	BOOM ANGLE	94
10	73)	56000								
12	64)	34000	77)	21300						
15	58)	30300	75)	21300	79)	21300				
20	44)	24500	69)	21300	75)	20500	79)	16200		
25	35)	18000	64)	17700	71)	16300	75)	14100	79)	10300
30			57)	13700	66)	13400	72)	12000	77)	9100
35			49)	10700	61)	10500	68)	10100	75)	8100
40			40)	8700	56)	8700	64)	8400	72)	7300
45			30)	7000	50)	7000	60)	7000	68)	6300
50					43)	5800	56)	5800	65)	5500
55					36)	4900	52)	4900	62)	4800
60					27)	4100	44)	4100	57)	4100
65							38)	3500	52)	3500
70							32)	2900	48)	2900
75							26)	2600	44)	2600
80									40)	2200
85									35)	1900
									29)	1600

PERMISSIBLE ROPE PULL

NUMBER PARTS LINE	9/16" DIA. 400' OF LOW ROTATION FLEX X 19 PLUS	NUMBER PARTS LINE	9/16" DIA. 340' OF 6X37 IWRC EIPS
SINGLE	8100 LBS.	SINGLE	9350 LBS.
TWO	16200 LBS.	TWO	18700 LBS.
THREE	24300 LBS.	THREE	28050 LBS.
FOUR	32400 LBS.	FOUR	37400 LBS.
FIVE	40500 LBS.	FIVE	46750 LBS.
SIX	48600 LBS.	SIX	56000 LBS.

DO NOT OPERATE THIS CRANE UNLESS YOU KNOW THE DIAMETER AND TYPE ROPE CURRENTLY INSTALLED ON THE CRANE. DO NOT EXCEED PERMISSIBLE ROPE PULL OF ROPE INSTALLED ON THIS CRANE. DO NOT USE 3 PART LINE WITH BOOM LENGTH OVER 61 FEET. DO NOT USE 4 PART LINE WITH BOOM LENGTH OVER 45 FEET. DO NOT USE 5 PART OR 6 PART LINE WITH BOOM LENGTH OVER 29 FEET.

DO NOT OPERATE THIS CRANE UNTIL YOU HAVE READ AND UNDERSTOOD "LIFTING NOTES" DECAL ON PEDESTAL.

LOAD CHART

RATED JIB LIFTING CAPACITIES IN POUNDS

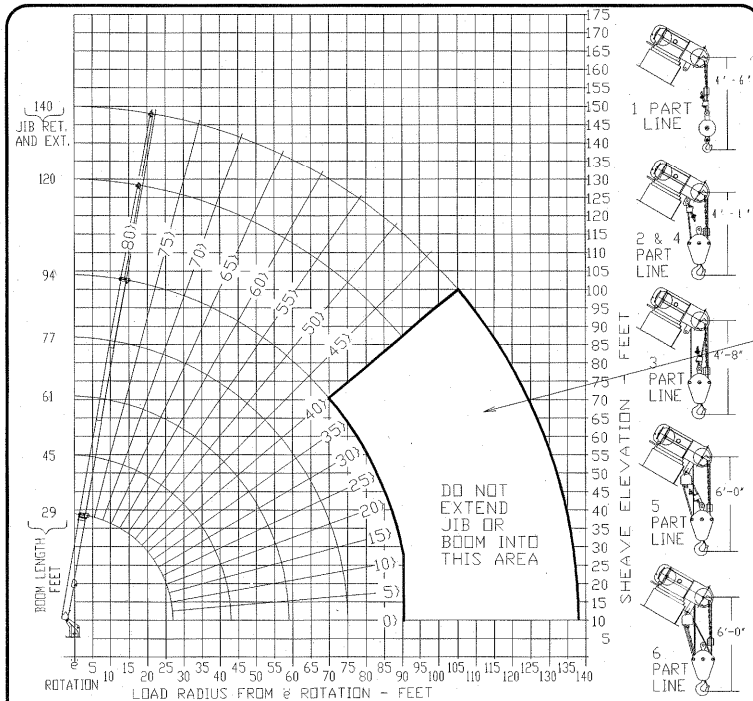
26-46 FT. 2 SECTION JIB			26 FT. FIXED JIB	
MINIMUM BOOM ANGLE	JIB FULLY RETRACTED	JIB FULLY EXTENDED	MINIMUM BOOM ANGLE	
79)	5400	2400	79)	5600
75)	4700	3200	75)	4900
70)	3800	2700	70)	4000
65)	3100	2300	65)	3300
60)	2500	1900	60)	2700
55)	2000	1500	55)	2200
50)	1400	1100	50)	1600
45)	1000	800	45)	1200
40)	700	500	40)	900

1. CAPACITIES BASED ON ANGLE OF MAIN BOOM REGARDLESS OF BOOM LENGTH.
2. RATED LIFTING CAPACITY ABOVE THE BOLD LINE IS BASED ON STRUCTURAL STRENGTH. OVERLOADING THE JIB MAY CAUSE STRUCTURAL COLLAPSE OR UPSET.
3. DO NOT USE JIB FOR MULTI-PART LINE OPERATIONS.
4. IF ACTUAL BOOM ANGLE FALLS BETWEEN CHART VALUES LISTED, USE LIFTING CAPACITY FOR NEXT LOWER BOOM ANGLE.

WEIGHT REDUCTION FOR LOAD HANDLING DEVICES

- HEADACHE BALL 170 LBS.
- HOOK BLOCK (SINGLE SHEAVE) 220 LBS.
- HOOK BLOCK (DOUBLE SHEAVE) 300 LBS.
- HOOK BLOCK (TRIPLE SHEAVE) 500 LBS.
- 2-SECTION JIB STOWED 200 LBS.
- 2-SECTION JIB ERRECTED (RETRACTED) 1600 LBS.
- 2-SECTION JIB ERRECTED (EXTENDED) 1800 LBS.
- 1-SECTION JIB STOWED 100 LBS.
- 1-SECTION JIB ERRECTED 1200 LBS.

1703716



HOIST SPECIFICATIONS - BRADEN PD12C

PERFORMANCE @ 3050 PSI	LOW SPEED-39 GPM			HIGH SPEED-63 GPM	
	LINE SPEED	LINE PULL LOW ROTATION	LINE PULL @ 7 EIPS	LINE SPEED	LINE PULL
1ST LAYER	113 FPM	8100 LBS.	9350 LBS.	193 FPM	9350 LBS.
2ND LAYER	125 FPM	8100 LBS.	9350 LBS.	214 FPM	9350 LBS.
3RD LAYER	138 FPM	8100 LBS.	9350 LBS.	235 FPM	9350 LBS.
4TH LAYER	150 FPM	8100 LBS.	9350 LBS.	256 FPM	9350 LBS.
5TH LAYER	162 FPM	8100 LBS.	9350 LBS.	277 FPM	9350 LBS.

THIS AREA TO HAVE RED
BACKGROUND WITH BLACK
LINES & NUMBERS.

BORDER TO BE BLACK
AS SHOWN

21 3/16

11 1/16