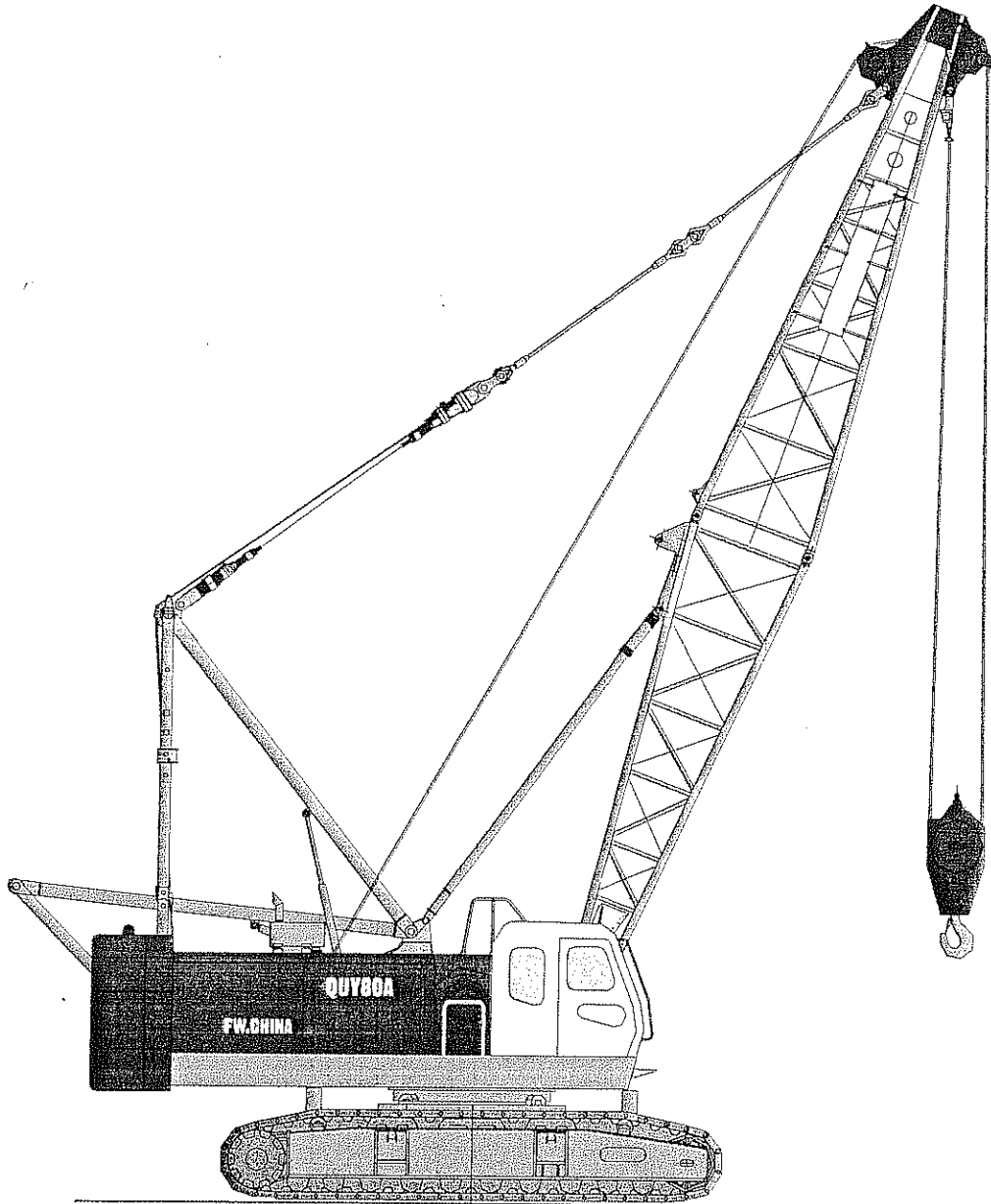
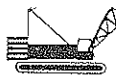


液压式履带起重机

HYDRAULIC CRAWLER CRANE

QY80A





标准主臂工况载荷表

Load Chart (Standard Boom)

倾覆载荷: 75% 单位: t (吨)
Tipping load: 75% Unit: t



13m-58m

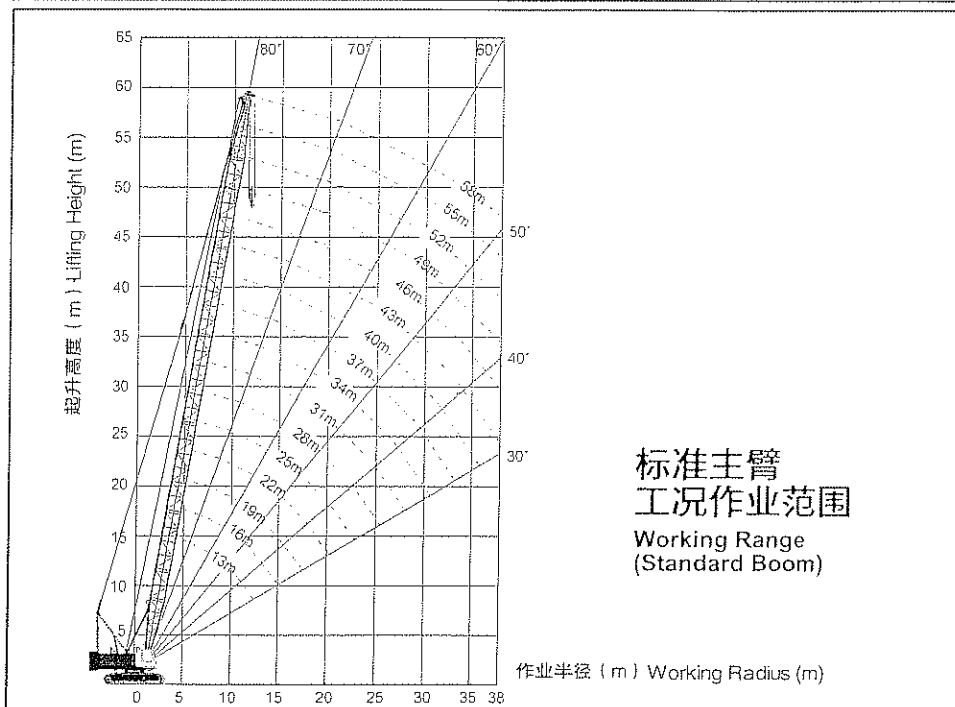


360°



24.5t

Boom length 作业半径(m) 臂长(m) Working Radius	13	19	25	31	37	43	49	55	58	Boom length 作业半径(m) 臂长(m) Working Radius
4.0	80.00									4.0
4.5	75.11	(5.15m)								4.5
5.0	65.47	61.92								5.0
5.5	55.98	55.69	(6.40m)							5.5
6.0	47.72	47.51	47.31							6.0
6.5	42.72	42.50	42.28							6.5
7.0	38.18	37.95	37.73	(7.65m)						7.0
7.5	34.49	34.26	34.03	32.89						7.5
8.0	31.44	31.20	30.97	30.80	(8.69m)					8.0
8.5	28.87	28.63	28.40	28.22	26.23					8.5
9.0	26.68	26.44	26.20	26.02	25.78	(10.14m)				9.0
10.0	23.13	22.89	22.64	22.46	22.21	21.54	(11.36m)			10.0
11.0	20.39	20.14	19.90	19.71	19.46	19.21	18.13	(12.64m)		11.0
12.0	18.21	17.96	17.71	17.52	17.26	17.01	16.82	15.38	(13.26m)	12.0
13.0	16.43	16.18	15.92	15.73	15.47	15.22	15.03	14.77	14.20	13.0
14.0	(12.46m)	14.69	14.44	14.25	13.99	13.73	13.54	13.28	13.12	14.0
15.0		13.25	12.99	12.80	12.54	12.29	12.10	11.84	11.68	15.0
16.0		12.19	11.90	11.75	11.49	11.23	11.04	10.78	10.62	16.0
18.0		10.75	10.23	10.04	9.78	9.52	9.32	9.06	8.90	18.0
20.0		(17.65m)	8.77	8.58	8.32	8.06	7.87	7.60	7.45	20.0
22.0			7.73	7.54	7.27	7.02	6.83	6.56	6.40	22.0
24.0			7.35	6.68	6.42	6.16	5.97	5.71	5.55	24.0
26.0			(22.65m)	5.79	5.54	5.28	5.10	4.84	4.68	26.0
28.0				5.21	4.96	4.70	4.51	4.26	4.10	28.0
30.0					4.46	4.20	4.02	3.76	3.60	30.0
32.0					3.84	3.59	3.41	3.17	3.02	32.0
34.0					3.61	3.23	3.05	2.81	2.66	34.0
36.0					(33.24m)	2.82	2.65	2.41	2.26	36.0
38.0						2.55	2.37	2.14	1.99	38.0



主要技术参数

Technical Data

项目	单位	数值	
主臂最大额定起重量	t	80	
主臂最大额定起重量 × 工作幅度	t·m	80 × 4 = 320	
主臂长度	m	13~58	
副臂长度	m	9~18	
主臂 + 副臂的最大长度	m	49 + 18	
起重臂变幅度角	°	30~80	
工作速度	钢绳提升	提升	m/min * 高速116/58 低速80/40
		下降	m/min * 高速116/58 低速80/40
	起重臂上升	起重臂上升	m/min * 54
		起重臂下降	m/min 54
	回转速度	r/min	高速3 低速1.8
	行走速度	km/h	* 1.3
主提升倍率	10	单绳拉力 8t	
爬坡能力 (带基本臂, 司机室置于后方)	%	30	
柴油机额定输出功率/转速	KW/rpm	美国康明斯QSL-9 209KW/2000rpm	
整机质量 (带基本臂)	t	83	
接地比压 (带基本臂)	Mpa	0.0828	
接地比压 (带最长主臂)		0.088	
接地比压 (带最长主臂+副臂)		0.088	
配重质量	t	24.5	

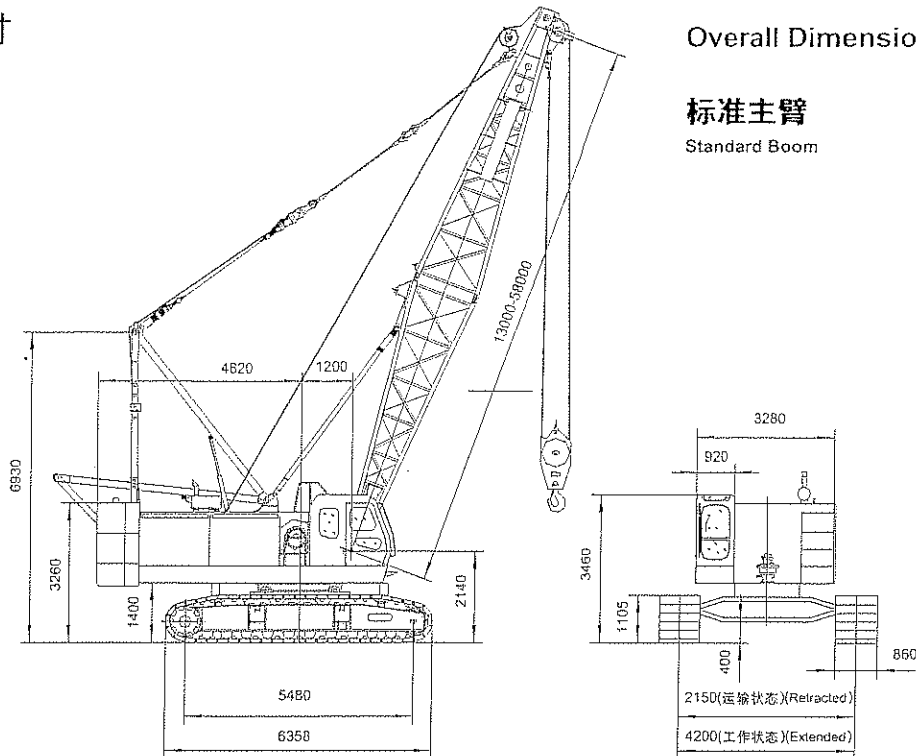
注: 带*速度是随载荷的不同而变化。

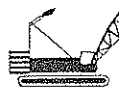
Descriptions	Unit	Value	
Max. Rated Capacity	t	80	
Max. Rated Capacity × Working Radiusment	t·m	80 × 4 = 320	
Boom Length	m	13~58	
Jib Length	m	9~18	
Max. length of main boom and fixed jib	m	49 + 18	
Boom Angle	°	30~80	
Working speed	Line Speed	Hoist	m/min * High116/58 Low80/40
		Lower	m/min * High116/58 Low80/40
	Boom hoist	Boom hoist	m/min * 54
		Boom Lower	m/min 54
	Stew speed	r/min	High3 Low 1.8
	Travel speed	km/h	* 1.3
Parts of line	10	Single pull 8t	
Grade ability <small>(with basic boom and cabin on rear side)</small>	%	30	
Rated power output/rotating speed of diesel engine	KW/rpm	Cummins QSL-9 209KW/2000rpm	
Mass of the crane (with basic boom)	t	83	
Ground pressure	(with basic boom)	Mpa	0.0828
	(with max. main boom)		0.088
	(with max. main boom + jib)		0.088
Counterweight	t	24.5	

Note: Speed with * may vary with the different load.

总体尺寸

Overall Dimensions





固定副臂工况载荷表

Load Chart (Fixed jib)



37m-52m



15° ,30°
9m-18m



360°



24.5t

主臂长 Boom Length		37m												
副臂长 Jib Length		9.0m				13.5m				18.0				
作业半径 Working Radius	Jib Angle 副臂夹角	15°	Jib Angle 副臂夹角	30°	作业半径 Working Radius	15°	作业半径 Working Radius	Jib Angle 副臂夹角	30°	作业半径 Working Radius	15°	作业半径 Working Radius	Jib Angle 副臂夹角	30°
13.0	8.00	14.90	5.50	15.00	7.00	17.90	4.00	17.10	5.00	20.90	3.20			
13.7	8.00	15.70	5.50	15.90	7.00	18.70	4.00	18.00	5.00	21.80	3.20			
14.5	8.00	16.40	5.50	16.70	7.00	19.50	4.00	18.90	5.00	22.70	3.20			
15.3	8.00	17.10	5.50	17.50	7.00	20.30	4.00	19.80	5.00	23.50	3.20			
16.0	8.00	17.90	5.50	18.40	7.00	21.10	4.00	20.70	5.00	24.30	3.20			
16.8	8.00	18.60	5.50	19.20	7.00	21.90	4.00	21.60	5.00	25.20	3.20			
17.5	8.00	19.30	5.50	20.00	7.00	22.70	4.00	22.40	5.00	26.00	3.20			
18.3	8.00	20.00	5.50	20.80	7.00	23.40	4.00	23.30	5.00	26.80	3.20			
19.0	8.00	20.70	5.50	21.60	7.00	24.20	4.00	24.20	5.00	27.60	3.20			
19.7	8.00	21.50	5.50	22.40	7.00	25.00	4.00	25.00	5.00	28.40	3.20			
20.5	8.00	22.20	5.50	23.20	7.00	25.70	4.00	25.90	5.00	29.20	3.20			
21.2	8.00	22.80	5.50	24.00	6.93	26.40	4.00	26.70	5.00	30.00	3.20			
21.9	7.66	23.50	5.50	24.70	6.61	27.20	4.00	27.60	5.00	30.80	3.20			
22.6	7.32	24.20	5.50	25.50	6.32	27.90	4.00	28.40	5.00	31.60	3.20			
23.3	7.00	24.90	5.50	26.30	6.05	28.60	4.00	29.20	5.00	32.30	3.20			
24.0	6.70	25.50	5.50	27.00	5.80	29.30	4.00	30.00	5.00	33.10	3.20			
24.7	6.43	26.20	5.50	27.60	5.57	30.00	4.00	30.80	4.88	33.80	3.20			
25.4	6.17	26.90	5.50	28.50	5.35	30.70	4.00	31.60	4.69	34.60	3.20			
26.1	5.93	27.50	5.50	29.20	5.14	31.40	4.00	32.40	4.51	35.30	3.20			
26.7	5.71	28.10	5.39	30.00	4.95	32.10	4.00	33.20	4.34	36.00	3.20			
27.4	5.50	28.60	5.21	30.70	4.77	32.70	4.00	34.00	4.19	36.70	3.20			



37m-52m



15° ,30°
9m-18m



360°



24.5t

主臂长 Boom Length		40m													
副臂长 Jib Length		9.0m				13.5m				18.0					
作业半径 Working Radius	Jib Angle 副臂夹角	15°	作业半径 Working Radius	Jib Angle 副臂夹角	30°	作业半径 Working Radius	15°	作业半径 Working Radius	Jib Angle 副臂夹角	30°	作业半径 Working Radius	15°	作业半径 Working Radius	Jib Angle 副臂夹角	30°
13.6	8.00	15.50	5.50	15.60	7.00	18.50	4.00	17.70	5.00	21.60	3.20				
14.4	8.00	16.30	5.50	16.50	7.00	19.40	4.00	18.60	5.00	22.50	3.20				
15.2	8.00	17.10	5.50	17.40	7.00	20.30	4.00	19.60	5.00	23.40	3.20				
16.1	8.00	17.90	5.50	18.30	7.00	21.10	4.00	20.60	5.00	24.30	3.20				
16.9	8.00	18.70	5.50	19.20	7.00	21.90	4.00	21.50	5.00	25.20	3.20				
17.7	8.00	19.50	5.50	20.00	7.00	22.80	4.00	22.40	5.00	26.10	3.20				
18.5	8.00	20.20	5.50	20.90	7.00	23.60	4.00	23.40	5.00	26.90	3.20				
19.3	3.00	21.00	5.50	21.80	7.00	24.40	4.00	24.30	5.00	27.80	3.20				
20.0	5.00	21.80	5.50	22.60	7.00	25.20	4.00	25.20	5.00	28.70	3.20				
20.8	8.00	22.50	5.50	23.50	7.00	26.00	4.00	26.10	5.00	29.50	3.20				
21.6	7.73	23.30	5.50	24.30	6.69	26.80	4.00	27.00	5.00	30.40	3.20				
22.4	7.34	24.00	5.50	25.10	6.37	27.60	4.00	27.90	5.00	31.20	3.20				
23.1	6.99	24.80	5.50	26.00	6.06	28.40	4.00	28.80	5.00	32.00	3.20				
23.9	6.66	25.50	5.50	26.80	5.79	29.20	4.00	29.70	5.00	32.80	3.20				
24.6	6.36	26.20	5.50	27.60	5.53	29.90	4.00	30.50	4.86	33.70	3.20				
25.4	6.08	26.90	5.50	28.40	5.29	30.70	4.00	31.40	4.65	34.50	3.20				
26.1	5.82	27.60	5.47	29.20	5.06	31.40	4.00	32.30	4.46	35.20	3.20				
26.8	5.57	28.30	5.25	30.00	4.85	32.20	4.00	33.10	4.27	36.00	3.20				
27.6	5.35	29.00	5.05	30.70	4.66	32.90	4.00	33.90	4.10	36.80	3.20				
28.3	5.13	29.70	4.87	31.50	4.48	33.60	4.00	34.70	3.94	37.50	3.20				
29.0	4.94	30.30	4.69	32.30	4.30	34.30	4.00	35.60	3.79	38.30	3.20				

目录 Content

安全装置	Safety Devices	01-02 >>
详细说明	Specifications	03-04 >>
臂杆组合	Boom Combination	05-06 >>
主要技术参数	Technical Data	
总体尺寸	Overall Dimensions	
总体尺寸	Overall Dimensions	07-08 >>
主臂和副臂组合	Boom and Fixed Jib Combinations	
标准主臂工况载荷表	Load Chart (Standard Boom)	09-10 >>
标准主臂工况作业范围	Working Range (Standard Boom)	
加长主臂工况载荷表	Load Chart (Runner)	
加长主臂工况作业范围	Working Range (Runner)	
固定副臂工况载荷表	Load Chart (Fixed Jib)	11-12 >>
固定副臂工况载荷表	Load Chart (Fixed Jib)	13-14 >>
载荷表说明	Notes for Load Chart	
固定副臂工况作业范围	Working Range (Fixed Jib)	
主要零部件运输尺寸	Dimensions for Transportation	15-18 >>

Safety Devices

Moment limiter	<p>Safe load indicator monitors and shows all actual parameters under the actual working conditions, such as actual hoist load, boom angle.</p> <p>When the actual load is less than 90% of rated maximum load, the green indicator on moment limiter will light up.</p> <p>When the actual load is between 90% and 100% of rated maximum load, the buzzer on the moment limiter will alarm intermittently and the yellow indicator on the computer screen and working signal light outside the cabin also light up. When the actual load reaches 105% of rated maximum load, the buzzer will alarm continuously; the red indicators on the screen and outside the cabin light up. At the same time, the hoisting of load and the increase of working radius will automatically stop.</p> <p>When the boom rises over 78°, the moment limiter will send this signal to the relays to control the rise of boom. The rise of boom will automatically stop after the solenoid valve cuts off the oil way.</p>
Hook limit device	<p>When the hook lifts up to certain height and touches the plumb, the limit switch shall be disengaged by the reposition spring, and then the switch cuts off the control circuit. The limit device controls the relay action and makes the buzzer alarm. At the same time, it controls the circuit of the solenoid valve which controls the rise of main/aux. hook; the oil way controlled by solenoid valve will be cut off and the oil outlet way of control valve also will be cut off. The rise of the hook will automatically stop. So the hook will not over-hoist the load.</p>
Boom limit device	<p>There are two ways to control the boom upper limit</p> <p>a. Limit switch control when the boom angle is less than 78°, the limit switch at the boom foot stays engaged and the derricking action of boom is available. When the boom angle equals 78°, the limit switch will be disengaged and the control relay makes the buzzer alarm. The solenoid valve cuts off the oil outlet way of the derricking control valve, and then the rise of boom will automatically stop.</p> <p>b. Moment limiter control When the actual load reaches 105% of rated maximum load and the boom angle is less than 30°, the increase of working radius will automatically stop. When the boom angle equal 78°, the buzzer in the moment limiter will alarm.</p>
Waterproof box:	<p>The waterproof box installed on the left side of the cabin is used for preventing the plugs of the angle sensor on the moment limiter, of hook over-hoist limit switch and of the anemometer from water.</p>
The three-color load indicator	<p>The three-color load indicator is installed on the crane in order to let the personnel on site know the load. The driver and the signal personnel are equipped with the interphone for the convenience of contact.</p>
Anemometer	<p>Anemometer- the wind speed sensor on the top of A-frame is used for testing wind speed. The moment limiter will show wind speed.</p>
The drum and slew brakes and locking devices	<p>Brakes: the crane has main/aux. Winch brakes, derricking brake and slew brake. Locking devices: the crane has main/aux. Winch pawls, derricking winch pawls and slew locking device.</p>
Gradiometer	<p>The device is used for testing the angle between the crane and the ground. It ensures the ground meets the requirements.</p>
Angle scale	<p>The angle scale installed on the boom foot is used for showing the current boom angle.</p>
Travel alarm device	<p>The manual buzzer alarms.</p>
Slew alarm device	<p>The manual buzzer alarms.</p>

Specifications

Superstructure

Power device

Model:QSL-9 the diesel engine from Cummins
 Type:water-cooled, direct fuel injection with turbocharger actuator
 Displacement: 8.9L
 Rated power:209kw/2000rpm
 Maximum torque:1356N.m/1500rpm
 Fuel tank capacity:485L
 Hydraulic oil tank capacity:600L

QUY80A are imported from German Rexroth.The hydraulic system is controlled by the load sensing valve.The main pump is double variable displacement pump.The main valve is M7 valve.The main/auxmotor has the HD control system and it has the four-speed stages.The derricking motor has the fixed displacement system and the pilot system functions well.The hydraulic pipes are ranged orderly and convenient for maintenance.

Hydraulic system

The hydraulic components of

The specification of Wire Rope

Position	Wire Rope Model	Wire Rope diameter	Length of wire rope(m)	Breaking load
Use for main hoist	6Fi(29)-φ26-B	φ26m	220	46t
Use for Aux. hoist	6Fi(29)-φ26-B	φ26m	180	46t
Use for derrick	6Fi(29)-φ20-C	φ20m	170	31t

Main and aux.hoist winshes

The main hoist winch,auxiliary hoist winch and derricking winch have motors with variable displacement piston driven by planetary reduction gear.The brake is often closed with wet disc.

Main and auxiliary hoist devices

Drum:the diameter is φ610mm

Maximum rope speed 116m/min

Derricking Device

Drum:the diameter is φ440mm

Maximum rope speed: 54 m/min

Slew System

The motor is driven by the reduction gear.through the planetary reducer

The crane can be turned by 360°

Speed: 3r/m (high speed) and1.8r/m (low speed)

The four pins at different positions are locked.

The Cabin

The fully close cabin has large front view. The cabin has rear view mirror, wiper, air-conditioner and stereo. The cabin also has the monitor with large screen and moment limiter. The seat can be adjusted. There is a fire extinguisher in the cabin.

Counterweight

The counterweight has two kinds: welded counterweight and forged counterweight. The welded counterweight includes three blocks while the forged counterweight includes six blocks. The total weight: 24.5t.

Undercarriage

Lower frame

The lower frame consists of structure steel plate. The left and right crawlers have the function of extension and retraction and it increases the stability of the lower frame.

The track roller

Every side has 10 track rollers:All track rollers are equipped with bushings, seals and lubricating oil.

Jack-up cylinders

The four jack-up cylinders are connected with the support beams on the lower frame for extension and retraction action

The crawler

The width of every track shoe is 860mm.The crawler chain includes 52 track shoes. The tension state of track shoe can be adjusted by the hydraulic jack until the adjusting plate has the ideal position.

The crawler Drive

The independent hydraulic driving system is within the crawler frame. Every hydraulic driving system has a hydraulic motor. The hydraulic motor and reduction gear in the crawler frame can not exceed the width of the track shoe.

Travel speed

1.3km/h,(The speed will vary with the different load)

Grade ability 30%

Working Equipments

The main steel pipe with high strength is imported. The lattice boom consists of steel pipes which are welded together. The boom sections are connected by the pins.

Boom

The standard boom is 13m-58m.

Fixed Jib

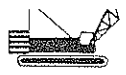
The fixed jib has two angles with the boom:15°,30°.

Boom and jib combinations

the standard boom is 37m-52m, the fixed jib is 9m-18m.

Hook

80t Hook 50t Hook 25t Hook 8t Hook



臂杆组合

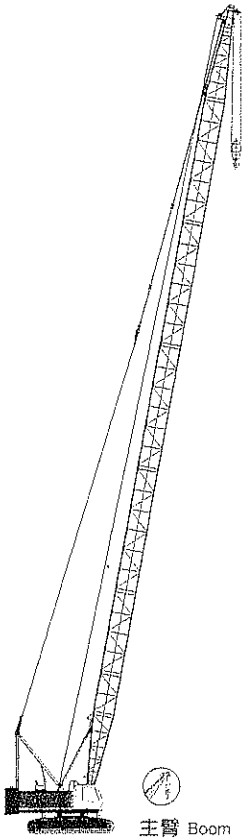
Boom Combination

标准主臂

最大起重量: 80吨x4米
最大臂杆长度: 58米

Standard Boom

Max. Rated load:
80tx4m
Max. Boom length:
58m



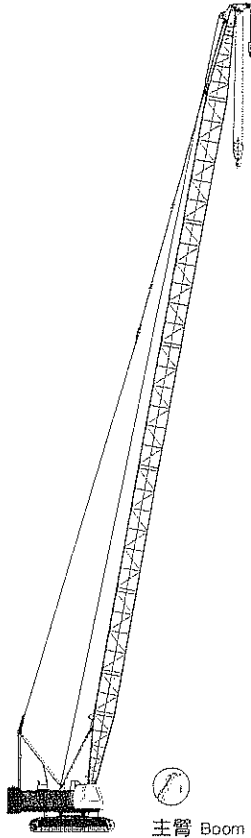
主臂 Boom
13m-58m

加长主臂

最大起重量: 8吨x20米
最大臂杆长度: 58米

Runner

Max. Rated load:
8tx4m
Max. Boom length:
58m



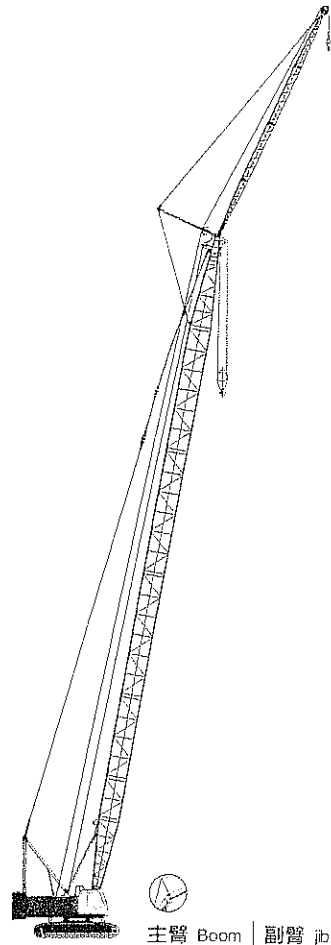
主臂 Boom
13m-58m

固定副臂

最大起重量: 8吨x20.3米
最大组合: 49米+18米

Fixed Jib

Max. Rated load:
8tx20.3m
Max. Combination:
49m+18m



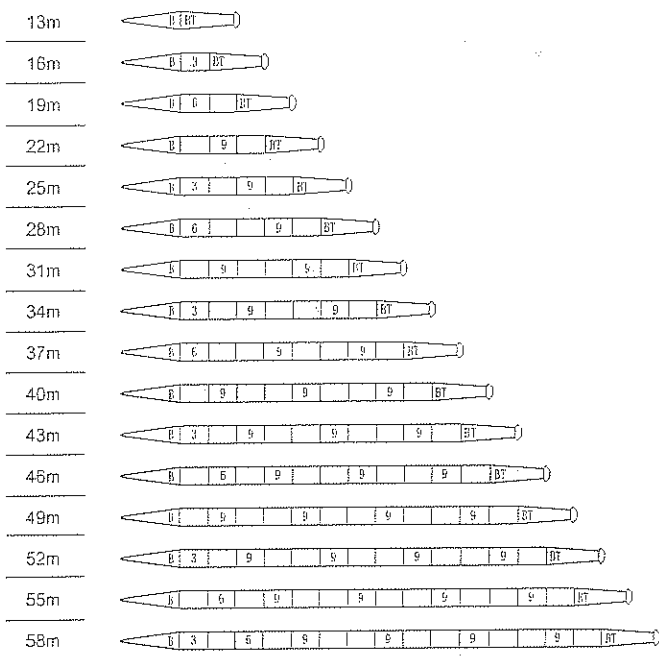
主臂 Boom | 副臂 jib
37m-52m | 9m-18m

主臂和副臂组合

Boom and Fixed Jib Combinations

标准主臂工况臂节组合

Boom Combination (Standard Boom)

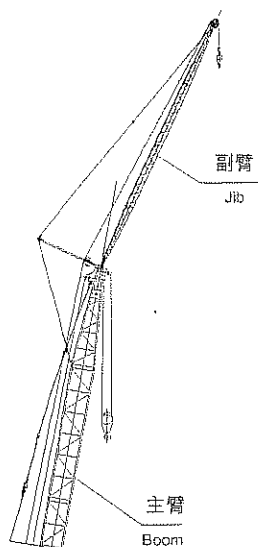


注解

符号	臂杆长度	备注
	6.5米	6.5米下节臂
	6.5米	6.5米上节臂
	3米	3米中间节臂
	6米	6米中间节臂
	9米	9米中间节臂

Note

Symbol	Boom length	Remarks
	6.5m	6.5m boom foot
	6.5m	6.5m boom top
	3 m	3m insert section
	6 m	6m insert section
	9 m	9m insert section



固定副臂工况臂节组合

主臂长度	副臂长度	副臂组合
	9米	
37米-52米	13.5米	
	18米	

Fixed Jib Combination

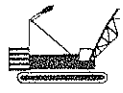
Boom length	Jib Length	Jib Combination
	9m	
37m-52m	13.5m	
	18m	

注解

符号	副臂长度	备注
	4.5米	4.5米下节臂
	4.5米	4.5米上节臂
	4.5米	4.5米中间节臂

Note

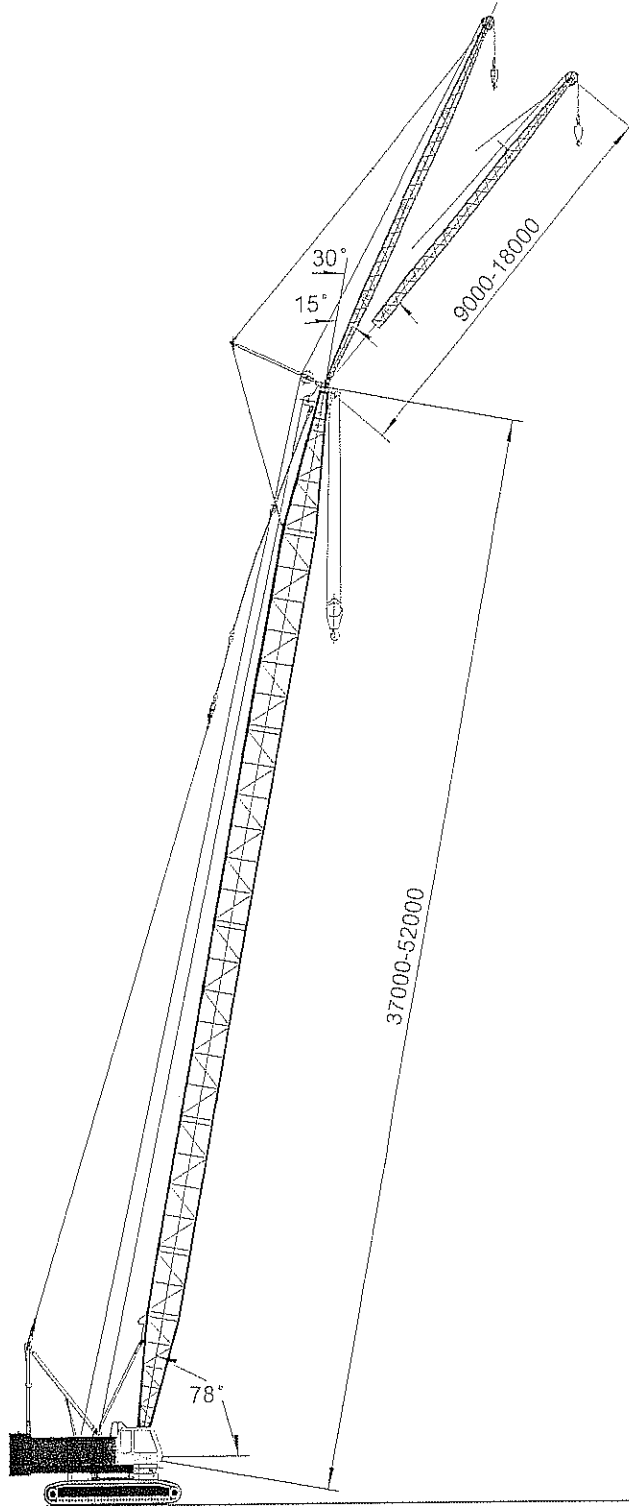
Symbol	Jib length	Remarks
	4.5m	4.5m jib foot
	4.5m	4.5m boom top
	4.5m	4.5m insert section



总体尺寸

Overall Dimensions

固定副臂
Fixed Jib



加长主臂工况载荷表

Load Chart (Runner)

倾覆载荷: 75% 单位: t (吨)
Tipping load: 75% Unit: t



13m-58m

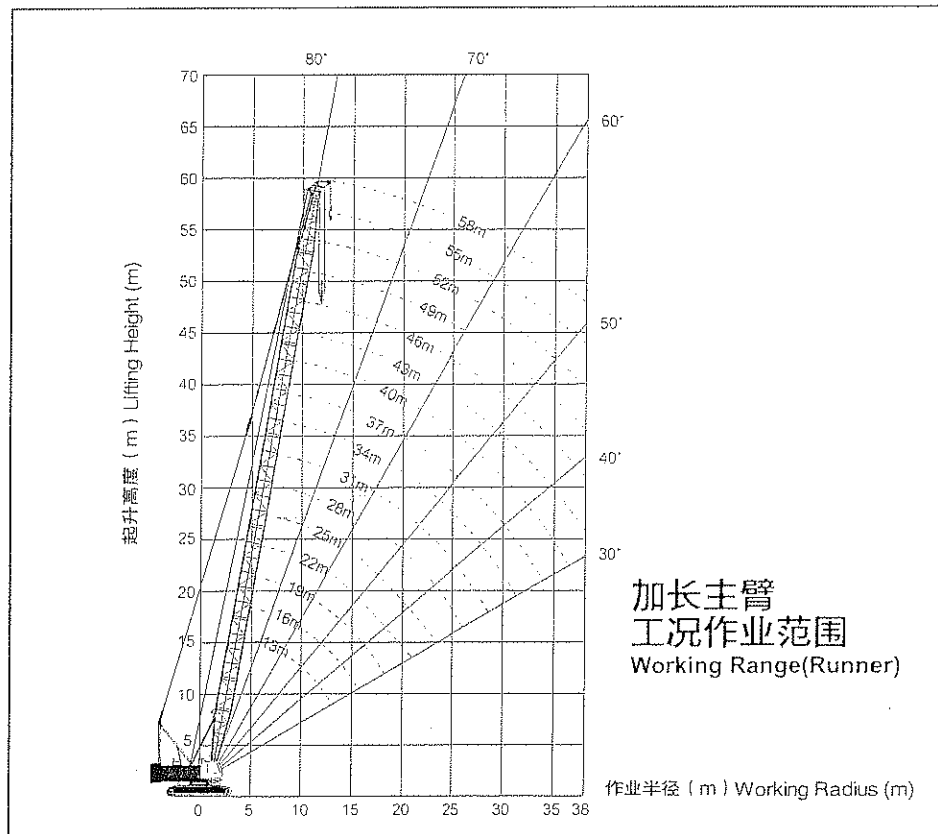


360°



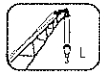
24.51

Boom length 作业半径(m) 臂长(m) Working Radius	13	19	25	31	37	43	49	55	58	Boom length 作业半径(m) 臂长(m) Working Radius	
4.0	8.00									4.0	
4.5	8.00	(5.15m)								4.5	
5.0	8.00	8.00								5.0	
5.5	8.00	8.00	(6.40m)							5.5	
6.0	8.00	8.00	8.00							6.0	
6.5	8.00	8.00	8.00							6.5	
7.0	8.00	8.00	8.00	(7.65m)						7.0	
7.5	8.00	8.00	8.00	8.00						7.5	
8.0	8.00	8.00	8.00	8.00	(8.89m)					8.0	
8.5	8.00	8.00	8.00	8.00	8.00					8.5	
9.0	8.00	8.00	8.00	8.00	8.00	(10.14m)				9.0	
10.0	8.00	8.00	8.00	8.00	8.00	8.00	(11.38m)			10.0	
11.0	8.00	8.00	8.00	8.00	8.00	8.00	8.00	(12.64m)		11.0	
12.0	8.00	8.00	8.00	8.00	8.00	8.00	8.00	8.00	(13.26m)	12.0	
13.0	8.00	8.00	8.00	8.00	8.00	8.00	8.00	8.00	8.00	13.0	
14.0	(12.46m)	8.00	8.00	8.00	8.00	8.00	8.00	8.00	8.00	14.0	
15.0		8.00	8.00	8.00	8.00	8.00	8.00	8.00	8.00	15.0	
16.0		8.00	8.00	8.00	8.00	8.00	8.00	8.00	8.00	16.0	
18.0		8.00	8.00	8.00	8.00	8.00	8.00	8.00	8.00	18.0	
20.0		(17.65m)	8.00	8.00	8.00	8.00	8.00	8.00	8.00	20.0	
22.0			8.00	8.00	8.00	8.00	7.90	7.67	7.36	7.17	22.0
24.0			8.00	7.59	7.25	6.93	6.70	6.39	6.20	24.0	
26.0			(22.85m)	6.79	6.45	6.12	5.89	5.57	5.38	26.0	
28.0				6.11	5.76	5.43	5.20	4.88	4.68	28.0	
30.0					5.17	4.84	4.60	4.28	4.09	30.0	
32.0					4.66	4.32	4.08	3.76	3.57	32.0	
34.0					4.37	3.87	3.63	3.31	3.11	34.0	
36.0					(33.24m)	3.47	3.23	2.90	2.70	36.0	
38.0						3.11	2.67	2.54	2.34	38.0	

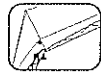


固定副臂工况载荷表

Load Chart (Fixed jib)



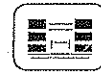
37m-52m



15° ,30°
9m-18m



360°



24.5t

主臂长 Boom Length		43.0m											
副臂长 Jib Length		9.0m				13.5m				18.0m			
Jib Angle 副臂夹角	15°	Jib Angle 副臂夹角	30°	Jib Angle 副臂夹角	15°	Jib Angle 副臂夹角	30°	Jib Angle 副臂夹角	15°	Jib Angle 副臂夹角	30°		
Working Radius	15.1	Working Radius	16.0	Working Radius	16.8	Working Radius	17.7	Working Radius	18.5	Working Radius	19.4		
14.2	8.00	16.20	5.50	16.30	7.00	19.20	4.00	18.30	5.00	22.20	3.20		
15.1	8.00	17.00	5.50	17.20	7.00	20.10	4.00	19.30	5.00	23.10	3.20		
16.0	8.00	17.90	5.50	18.10	7.00	21.00	4.00	20.30	5.00	24.10	3.20		
16.8	8.00	18.70	5.50	19.10	7.00	21.90	4.00	21.30	5.00	25.10	3.20		
17.7	8.00	19.50	5.50	20.00	7.00	22.80	4.00	22.30	5.00	26.00	3.20		
18.5	8.00	20.40	5.50	20.90	7.00	23.60	4.00	23.30	5.00	26.90	3.20		
19.4	8.00	21.20	5.50	21.80	7.00	24.50	4.00	24.30	5.00	27.90	3.20		
20.2	8.00	22.00	5.50	22.70	7.00	25.40	4.00	25.30	5.00	28.80	3.20		
21.1	7.87	22.80	5.50	23.70	6.83	26.20	4.00	26.20	5.00	29.70	3.20		
21.9	7.43	23.60	5.50	24.50	6.46	27.10	4.00	27.20	5.00	30.60	3.20		
22.7	7.03	24.40	5.50	25.40	6.12	27.90	4.00	28.10	5.00	31.50	3.20		
23.5	6.66	25.20	5.50	26.30	5.80	28.80	4.00	29.10	5.00	32.40	3.20		
24.4	6.32	26.00	5.50	27.20	5.51	29.60	4.00	30.00	4.86	33.30	3.20		
25.2	6.01	26.70	5.50	28.10	5.25	30.40	4.00	30.90	4.63	34.10	3.20		
26.0	5.72	27.50	5.36	28.90	5.00	31.20	4.00	31.90	4.41	35.00	3.20		
26.7	5.45	28.30	5.13	29.80	4.77	32.00	4.00	32.80	4.21	35.80	3.20		
27.5	5.21	29.00	4.91	30.60	4.55	32.80	4.00	33.70	4.02	36.70	3.20		
28.3	4.97	29.80	4.70	31.40	4.35	33.60	4.00	34.60	3.84	37.50	3.20		
29.1	4.76	30.50	4.51	32.20	4.16	34.40	3.87	35.40	3.67	38.30	3.20		
29.8	4.56	31.20	4.33	33.10	3.99	35.20	3.72	36.30	3.52	39.10	3.20		
30.6	4.37	31.90	4.16	33.90	3.82	35.90	3.56	37.20	3.37	39.90	3.11		



37m-52m



15° ,30°
9m-18m

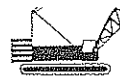


360°



24.5t

主臂长 Boom Length		46.0m											
副臂长 Jib Length		9.0m				13.5m				18.0m			
Jib Angle 副臂夹角	15°	Jib Angle 副臂夹角	30°	Jib Angle 副臂夹角	15°	Jib Angle 副臂夹角	30°	Jib Angle 副臂夹角	15°	Jib Angle 副臂夹角	30°		
Working Radius	14.8	Working Radius	15.8	Working Radius	16.7	Working Radius	17.6	Working Radius	18.5	Working Radius	19.4		
14.8	8.00	16.80	5.50	16.90	7.00	19.80	4.00	18.90	5.00	22.80	3.20		
15.8	8.00	17.70	5.50	17.90	7.00	20.80	4.00	20.00	5.00	23.80	3.20		
16.7	8.00	18.60	5.50	18.90	7.00	21.70	4.00	21.10	5.00	24.80	3.20		
17.6	8.00	19.50	5.50	19.90	7.00	22.70	4.00	22.10	5.00	25.80	3.20		
18.5	8.00	20.40	5.50	20.80	7.00	23.60	4.00	23.20	5.00	26.80	3.20		
19.4	8.00	21.20	5.50	21.80	7.00	24.50	4.00	24.20	5.00	27.80	3.20		
20.3	8.00	22.10	5.50	22.80	7.00	25.40	4.00	25.20	5.00	28.80	3.20		
21.2	7.70	23.00	5.50	23.70	6.71	26.40	4.00	26.20	5.00	29.80	3.20		
22.1	7.24	23.80	5.50	24.70	6.32	27.30	4.00	27.30	5.00	30.70	3.20		
23.0	6.82	24.70	5.50	25.60	5.96	28.20	4.00	28.30	5.00	31.70	3.20		
23.8	6.43	25.50	5.50	26.60	5.63	29.10	4.00	29.30	4.97	32.60	3.20		
24.7	6.08	26.40	5.50	27.50	5.32	30.00	4.00	30.30	4.71	33.50	3.20		
25.5	5.76	27.20	5.36	28.40	5.05	30.80	4.00	31.20	4.46	34.50	3.20		
26.4	5.46	28.00	5.12	29.30	4.79	31.70	4.00	32.20	4.24	35.40	3.20		
27.3	5.19	28.80	4.88	30.20	4.55	32.60	4.00	33.20	4.03	36.30	3.20		
28.1	4.93	29.60	4.65	31.10	4.33	33.40	4.00	34.10	3.83	37.20	3.20		
28.9	4.70	30.40	4.44	32.00	4.12	34.20	3.82	35.10	3.65	38.10	3.20		
29.8	4.48	31.20	4.24	32.90	3.93	35.10	3.65	36.00	3.47	38.90	3.18		
30.6	4.27	32.00	4.06	33.70	3.75	35.90	3.50	36.90	3.31	39.80	3.04		
31.4	4.08	32.80	3.88	34.60	3.58	36.70	3.35	37.80	3.16	40.60	2.92		
32.2	3.90	33.50	3.72	35.40	3.42	37.50	3.21	38.70	3.02	41.50	2.80		

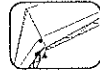


固定副臂工况载荷表

Load Chart (Fixed jib)



37m-52m



15° , 30°
9m-18m



360°



24.5t

主臂长 Boom Length		49.0m											
副臂长 Jib Length		9.0m				13.5m				18.0			
作业半径 Working Radius	Jib Angle 副臂夹角 15°	作业半径 Working Radius	Jib Angle 副臂夹角 30°	作业半径 Working Radius	Jib Angle 副臂夹角 15°	作业半径 Working Radius	Jib Angle 副臂夹角 30°	作业半径 Working Radius	Jib Angle 副臂夹角 15°	作业半径 Working Radius	Jib Angle 副臂夹角 30°		
15.5	8.00	17.40	5.50	17.50	7.00	20.40	4.00	19.60	5.00	23.40	3.20		
16.4	8.00	18.40	5.50	18.60	7.00	21.40	4.00	20.70	5.00	24.50	3.20		
17.4	8.00	19.30	5.50	19.60	7.00	22.40	4.00	21.80	5.00	25.60	3.20		
18.4	8.00	20.20	5.50	20.60	7.00	23.40	4.00	22.90	5.00	26.60	3.20		
19.3	8.00	21.20	5.50	21.70	7.00	24.40	4.00	24.00	5.00	27.70	3.20		
20.3	8.00	22.10	5.50	22.70	7.00	25.40	4.00	25.10	5.00	28.70	3.20		
21.2	7.59	23.00	5.50	23.70	6.63	26.40	4.00	26.10	5.00	29.70	3.20		
22.2	7.10	23.90	5.50	24.70	6.21	27.30	4.00	27.20	5.00	30.70	3.20		
23.1	6.66	24.90	5.50	25.70	5.83	28.30	4.00	28.30	5.00	31.70	3.20		
24.1	6.25	25.80	5.50	26.70	5.49	29.30	4.00	29.30	4.86	32.70	3.20		
25.0	5.89	26.60	5.47	27.70	5.17	30.20	4.00	30.40	4.58	33.70	3.20		
25.9	5.55	27.50	5.48	28.70	4.88	31.10	4.00	31.40	4.33	34.70	3.20		
26.8	5.24	28.40	4.91	29.60	4.61	32.10	4.00	32.50	4.09	35.70	3.20		
27.7	4.96	29.30	4.66	30.60	4.36	33.00	4.00	33.50	3.87	36.70	3.20		
28.6	4.70	30.10	4.43	31.50	4.13	33.90	3.81	34.50	3.66	37.60	3.20		
29.5	4.45	31.00	4.21	32.50	3.92	34.80	3.63	35.50	3.47	38.50	3.16		
30.3	4.23	31.80	4.01	33.40	3.72	35.70	3.46	36.50	3.30	39.50	3.01		
31.2	4.02	32.70	3.82	34.30	3.54	36.50	3.30	37.50	3.13	40.40	2.87		
32.1	3.82	33.50	3.64	35.20	3.36	37.40	3.15	38.40	2.98	41.30	2.74		
32.9	3.64	34.30	3.47	36.10	3.20	38.20	3.00	39.40	2.83	42.20	2.62		
33.7	3.47	35.10	3.32	37.00	3.05	39.10	2.87	40.30	2.69	43.10	2.50		



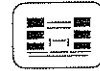
37m-52m



15° , 30°
9m-18m



360°



24.5t

主臂长 Boom Length		52.0m											
副臂长 Jib Length		9.0m				13.5m				18.0			
作业半径 Working Radius	Jib Angle 副臂夹角 15°	作业半径 Working Radius	Jib Angle 副臂夹角 30°	作业半径 Working Radius	Jib Angle 副臂夹角 15°	作业半径 Working Radius	Jib Angle 副臂夹角 30°	作业半径 Working Radius	Jib Angle 副臂夹角 15°	作业半径 Working Radius	Jib Angle 副臂夹角 30°		
				18.10	7.00	21.00	4.00						
				19.20	7.00	22.10	4.00						
				20.30	7.00	23.20	4.00						
				21.40	7.00	24.20	4.00						
				22.50	7.00	25.20	4.00						
				23.60	6.56	26.30	4.00						
				24.60	6.11	27.30	4.00						
				25.70	5.71	28.30	4.00						
				26.70	5.34	29.30	4.00						
				27.80	5.00	30.30	4.00						
				28.80	4.70	31.30	4.00						
				29.80	4.42	32.30	4.00						
				30.80	4.16	33.30	3.82						
				31.90	3.92	34.20	3.61						
				32.90	3.69	35.20	3.42						
				33.80	3.49	36.10	3.24						
				34.80	3.30	37.10	3.07						
				35.80	3.12	38.00	2.91						
				36.70	2.95	38.90	2.77						
				37.70	2.79	39.80	2.63						
				38.60	2.65	40.70	2.49						

载荷表说明

The Notes for Load Chart

说明

1. 本起重机符合 GB3811 标准, 同时又满足 ISO 4302、ISO 4305 标准。
2. 载荷表所表示的额定总载荷值为水平坚硬地面上, 理想作业条件的最大允许值。
3. 载荷表所示的值以吨为单位, 并基于倾翻力矩 75% 以内的值, 及移动式起重机结构标准所确定的前方稳定度在 1.15 以内。
4. 载荷表所示的值基于平衡负载而计算, 不包括如突然停止的冲击负载, 地表状况, 风力负荷及操作速度等影响。如在此条件下, 驾驶员必须进行减载作业。同时, 载荷表中的值还要扣除如吊钩, 吊具等的自重。
5. 在安装副臂时, 主起重臂实际吊起的载荷重量为主臂载荷表中的值扣除下表所列重量及主钩+副钩的质量。

副臂长度 (m)	9	13.5	18
扣除质量 (kg)	750	1000	1300

6. 安装副臂的起重臂的长度是 37 ~ 52 米。
7. 平衡重质量为 24.5 吨。
8. 在安装加长臂时, 主起重臂实际吊起的载荷重量为主臂载荷表中的值扣除加长臂 (0.42 吨) 及主钩+副钩的质量。

起重钩质量及提升钢丝绳倍率和额定总载荷最大值

起重钩种类	钢丝绳倍率 自重 (t)	额定载荷最大值 (t)									
		10	9	8	7	6	5	4	3	2	1
80t	1.030	80	72	64	56	48	40	32	24	16	8
50t	0.667				48	40	32	24	16	8	
25t	0.438							24	16	8	
8t	0.246									8	

9. 起重机主臂操作允许最高风压为 60N/m², 最高风速 9.8m/s。
10. 载荷表中 () 中数据为实际作业半径下的载荷。

Notes

1. Ratings according to GB3811, ISO4302 and ISO4305.
2. All lifting capacities are for crane on firm and level surface.
3. The unit in load chart is ton. The rated lifting capacity is within 75% of tipping load and the front stability is within 1.15 as specified in the standard of the structure of mobile crane.
4. The rated lifting capacity in the table is calculated based on the stable load, not including impacting load, the hard condition of the ground and operating speed. So the driver should reduce the corresponding load from the rated lifting capacity. The weight of hook and slings should also be deducted from the rated lifting capacity.
5. When mounted with jib, the actual lifting capacity of boom is the weight shown in the load chart deducting the weight of main and auxiliary hooks and jib.

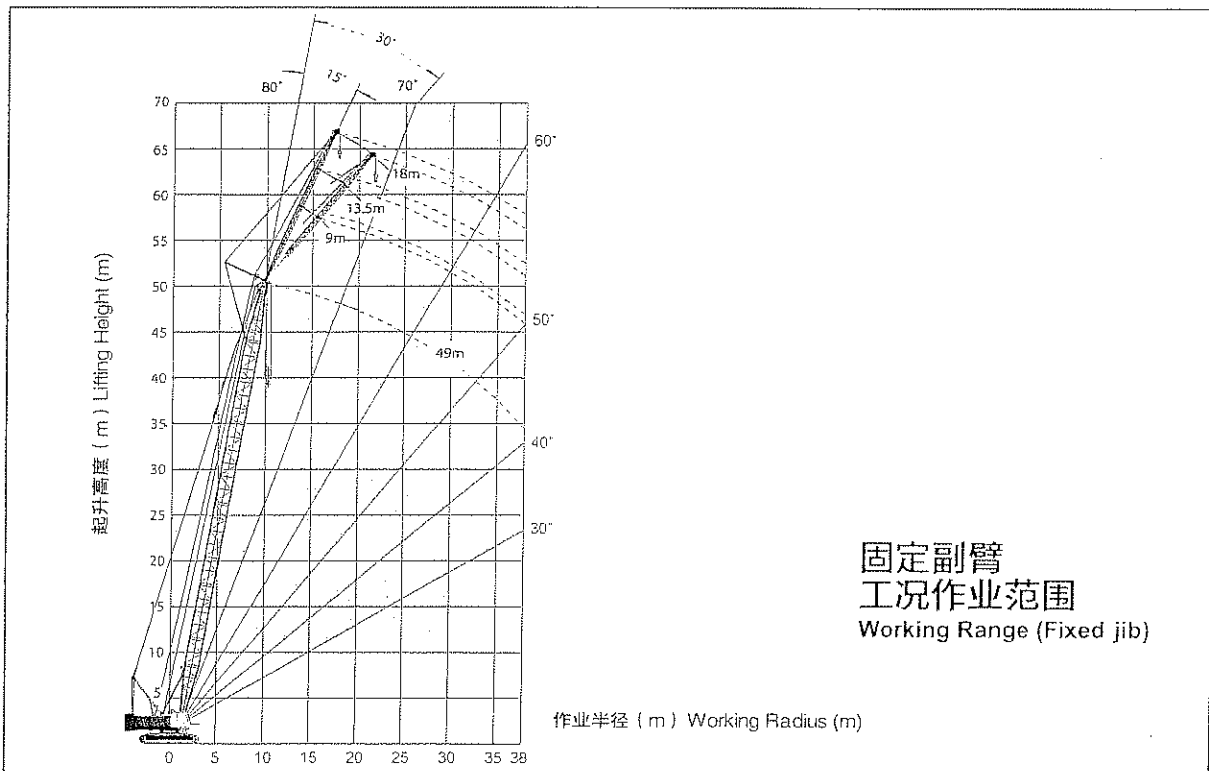
Jib Length(m)	9	13.5	18
Deducted mass(kg)	750	1000	1300

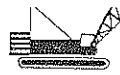
6. When mounted with jib, boom length is from 37 ~ 52m.
7. The weight of counterweight is 24.5t.
8. When mounted with runner, lifting capacity of main hook should be rated lifting capacity deducting mass of runner (0.42t) and weight of main and auxiliary hooks.

The weight of hooks, the parts of line and maximum rated load

Hooks	Parts of line Mass(t)	Max. rated load capacity(t)									
		10	9	8	7	6	5	4	3	2	1
80t	1.030	80	72	64	56	48	40	32	24	16	8
50t	0.667				48	40	32	24	16	8	
25t	0.438							24	16	8	
8t	0.246									8	

9. The maximum allowed wind pressure is 60N/m² and wind speed is 9.8m/s when the crane is working.
10. The data within () is the load under the actual working radius.

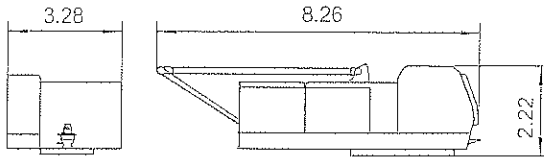




主要零部件运输尺寸

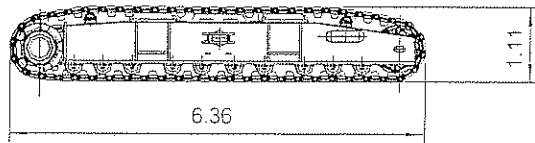
Dimensions for Transportation

尺寸单位: m Unit: m



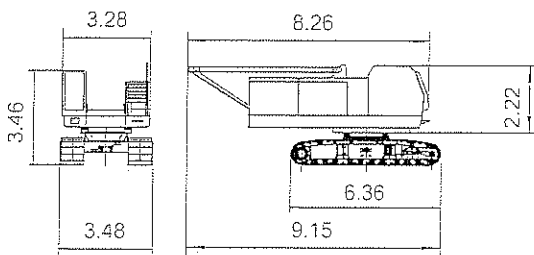
本体	x1
长	8.26m
宽	3.28m
高	2.22m
重量	18300kg

Carbody	x1
Length	8.26m
Width	3.28m
Height	2.22m
Weight	18300kg



履带总成	x2
长	6.36m
宽	1.19m
高	1.11m
重量	12000kg

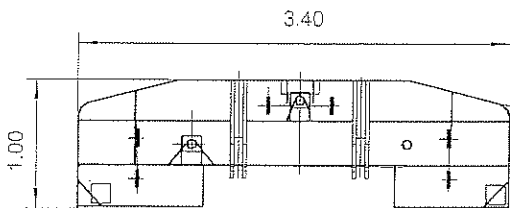
The Crawler	x2
Length	6.36m
Width	1.19m
Height	1.11m
Weight	12000kg



裸机	x1
长	9.15m
宽	3.48m
高	3.46m
重量	53000kg

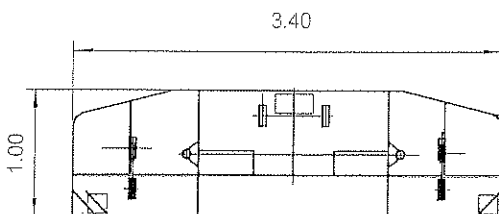
The naked crane	x1
Length	9.15m
Width	3.48m
Height	3.46m
Weight	53000kg

焊接配重 Welded counterweight



配重A	x1
长	3.40m
宽	1.00m
高	0.52m
重量	7811kg

Counterweight A	x1
Length	3.40m
Width	1.00m
Height	0.52m
Weight	7811kg



配重B	x1
长	3.40m
宽	1.00m
高	0.67m
重量	9277kg

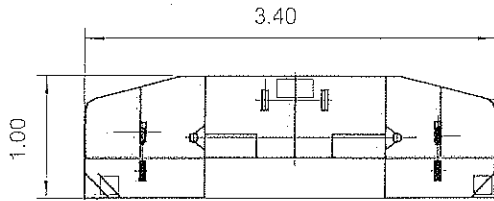
Counterweight B	x1
Length	3.40m
Width	1.00m
Height	0.67m
Weight	9277kg

有焊件配重和铸件配重，可任选其一。
You can choose one between welded counterweight and forged counterweight.

主要零部件运输尺寸

Dimensions for Transportation

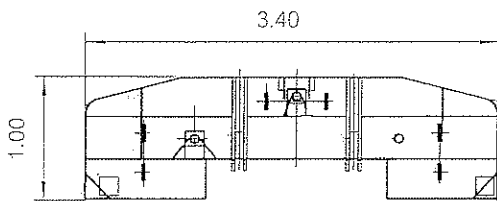
尺寸单位: m Unit: m



配重C	x1
长	3.40m
宽	1.00m
高	0.65m
重量	7530kg

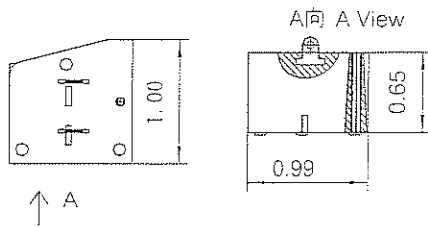
Counterweight C	x1
Length	3.40m
Width	1.00m
Height	0.65m
Weight	7530kg

铸造配重 Forged Counterweight



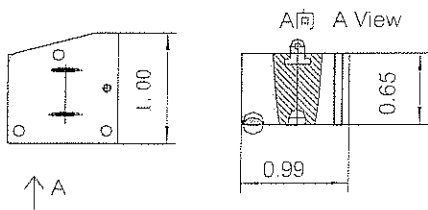
配重A	x1
长	3.40m
宽	1.00m
高	0.52m
重量	7811kg

Counterweight A	x1
Length	3.40m
Width	1.00m
Height	0.52m
Weight	7811kg



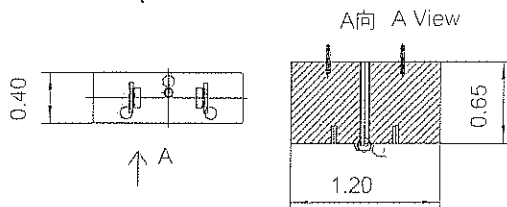
配重 I	x1
长	1.00m
宽	0.99m
高	0.65m
重量	4067kg

Counterweight I	x1
Length	1.00m
Width	0.99m
Height	0.65m
Weight	4067kg



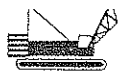
配重 II	x1
长	1.00m
宽	0.99m
高	0.65m
重量	4055kg

Counterweight II	x1
Length	1.00m
Width	0.99m
Height	0.65m
Weight	4055kg



配重 III	x1
长	1.20m
宽	0.40m
高	0.65m
重量	2111kg

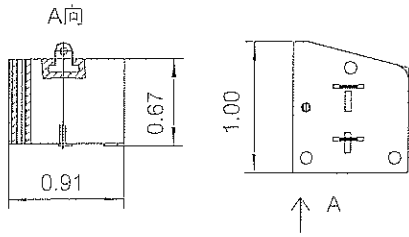
Counterweight III	x1
Length	1.20m
Width	0.40m
Height	0.65m
Weight	2111kg



主要零部件运输尺寸

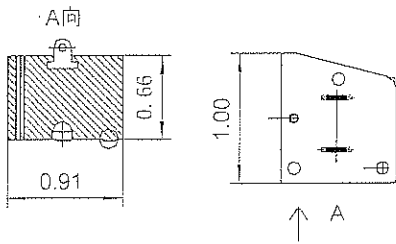
Dimensions for Transportation

尺寸单位: m Unit: m



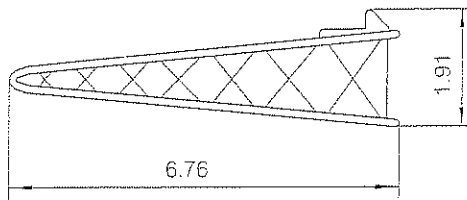
配重IV	x1
长	1.00m
宽	0.91m
高	0.67m
重量	3656kg

Counterweight IV	x1
Length	1.00m
Width	0.91m
Height	0.67m
Weight	3656kg



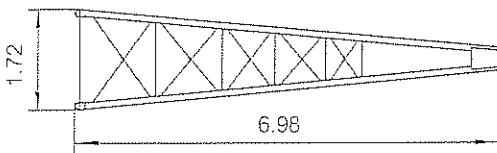
配重V	x1
长	1.00m
宽	0.91m
高	0.66m
重量	3654kg

Counterweight V	x1
Length	1.00m
Width	0.91m
Height	0.66m
Weight	3654kg



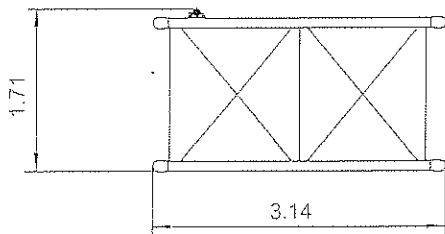
根部臂节	x1
长	6.76m
宽	1.61m
高	1.91m
重量	1800kg

Boom foot	x1
Length	6.76m
Width	1.61m
Height	1.91m
Weight	1800kg



顶部臂节	x1
长	6.98m
宽	1.61m
高	1.72m
重量	1680kg

Boom top	x1
Length	6.98m
Width	1.61m
Height	1.72m
Weight	1680kg



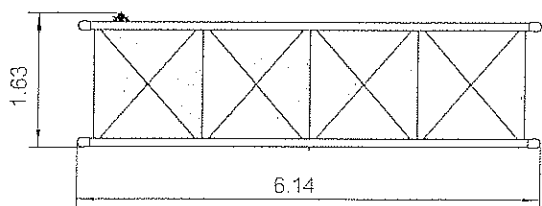
3M臂节	x1
长	3.14m
宽	1.61m
高	1.71m
重量	523kg

3m section	x1
Length	3.14m
Width	1.61m
Height	1.71m
Weight	523kg

主要零部件运输尺寸

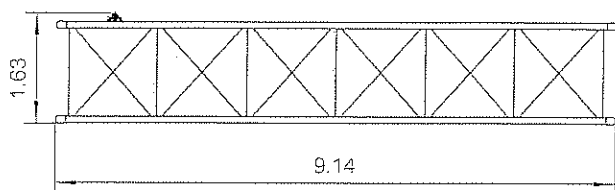
Dimensions for Transportation

尺寸单位: m Unit: m



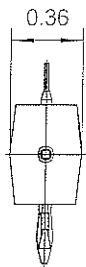
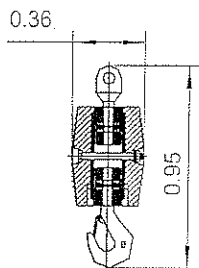
6M臂节	x1
长	6.14m
宽	1.61m
高	1.63m
重量	844kg

6m section	x1
Length	6.14m
Width	1.61m
Height	1.63m
Weight	844kg



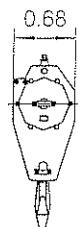
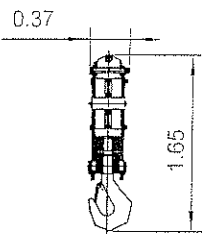
9M臂节	x4
长	9.14m
宽	1.61m
高	1.63m
重量	1150kg

9m section	x4
Length	9.14m
Width	1.61m
Height	1.63m
Weight	1150kg



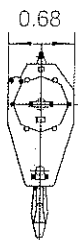
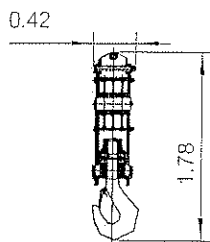
8吨吊钩	x1
长	0.95m
宽	0.36m
高	0.36m
重量	246kg

8t hook	x1
Length	0.95m
Width	0.36m
Height	0.36m
Weight	246kg



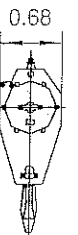
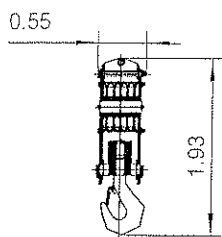
25吨吊钩	x1
长	1.65m
宽	0.68m
高	0.37m
重量	438kg

25t hook	x1
Length	1.65m
Width	0.68m
Height	0.37m
Weight	438kg



50吨吊钩	x1
长	1.78m
宽	0.68m
高	0.42m
重量	667kg

50t hook	x1
Length	1.78m
Width	0.68m
Height	0.42m
Weight	667kg



80吨吊钩	x1
长	1.93m
宽	0.68m
高	0.55m
重量	1030kg

80t hook	x1
Length	1.93m
Width	0.68m
Height	0.55m
Weight	1030kg

抚顺挖掘机制造有限责任公司

地址: 辽宁省抚顺市顺城区双阳路2号

邮编: 113126

网址: www.cnfuwa.com

销售公司电话: +86-413-7647 989/7642 419

传真: +86-413-7642 419

售后服务中心电话: +86-413-7641 727

电子信箱: sale@cnfuwa.com

进出口公司电话: +86-413-7649 117/7642 558

传真: +86-413-7642 766

电子信箱: export@cnfuwa.com

免费服务电话: 800-890-0009

SANTOS
Crane & Heavy Equip. Rental



سانتوس
شركة إيجار المعدات الثقيلة

Tel : +9714 - 2682486

Fax : +9714 - 2682485

Mobile : +97150 - 6611079

P.O. Box : 80600 , Dubai, U.A.E.

تليفون : +9714-2682486

فاكس : +9714-2682485

متحرك : +97150-6611079

ص ب : 80600 دبي - إ.ع.م.

E-mail : santostd@emirates.net.ae

FUSHUN EXCAVATOR CORPORATION LTD.

Add: No.2 Shuangyang Road, Shuncheng District, Fushun Liaoning, China
p.c.113126

http://www.cnfuwa.com

China Market Sale Dept. Tel: +86-413-7647 989/7642 419

Fax: +86-413-7642 419

After sale Service Dept. Tel: +86-413-7641 727

E-mail: sale@cnfuwa.com

Import & Export Dept. Tel: +86-413-7649 117/7642 558

Fax: +86-413-7642 766

E-mail: export@cnfuwa.com

技术参数如有更改恕不另行通知

Specifications may vary without prior notice

QY80A

Hydraulic Crawler Crane

Operational Manual

Fushun Excavator Corp. Ltd.

2.2 Overall dimensions

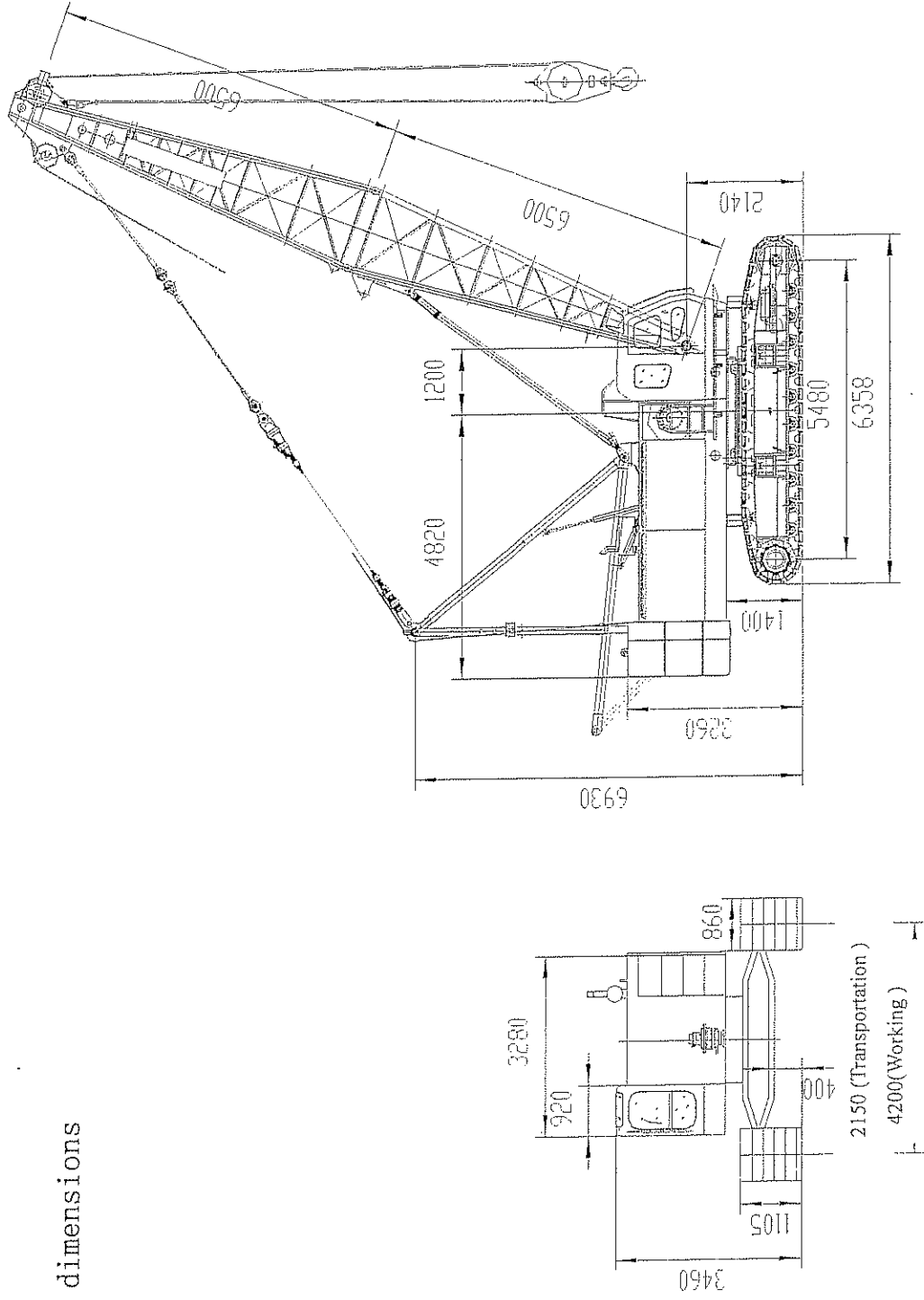


Fig.2-2

2.3 Rated Load Capacity

2.3.1 QUY80A Load Chart (Boom)

Length (m) Radius (m)	Tipping load: 75%																	Unit: t
	13	16	19	22	25	28	31	34	37	40	43	46	49	52	55	58		
4.0	80.00																	
4.5	75.11	75.00 (5.15m)															4.5	
5.0	65.47	65.36 (5.77m)	61.92														5.0	
5.5	55.98	55.76	55.69 (6.40m)	54.79													5.5	
6.0	47.72	47.59	47.51	47.44	47.31												6.0	
6.5	42.72	42.58	42.50	42.42	42.28												6.5	
7.0	38.18	38.04	37.95	37.87	37.73	37.65 (7.65m)											7.0	
7.5	34.49	34.35	34.26	34.18	34.03	33.95 (8.27m)											7.5	
8.0	31.44	31.29	31.20	31.12	30.97	30.88 (8.89m)	29.21										8.0	
8.5	28.87	28.72	28.63	28.54	28.40	28.31 (9.52m)	28.07	26.23									8.5	
9.0	26.68	26.53	26.44	26.35	26.20	26.11 (10.14m)	25.87	25.78 (10.76m)	23.71								9.0	
10.0	23.13	22.89	22.89	22.80	22.64	22.55 (11.38m)	22.31	22.21	22.12	19.72							10.0	
11.0	20.39	20.24	20.14	20.05	19.90	19.80	19.55	19.46	19.37	19.21	18.13						11.0	
12.0	18.21	18.05	17.96	17.86	17.71	17.61	17.36	17.26	17.17	17.01	16.82	16.67	15.38 (13.26m)				12.0	
13.0	16.43	16.27	16.18	16.08	15.92	15.82	15.57	15.47	15.38	15.22	15.12	14.87	14.77	14.20			13.0	
14.0	14.79 (12.46m)	14.79	14.69	14.60	14.44	14.34	14.09	13.99	13.89	13.73	13.64	13.38	13.28	13.12	14.0		14.0	
15.0	13.34	13.34	13.25	13.15	12.99	12.89	12.64	12.54	12.45	12.29	12.19	12.10	11.94	11.68	15.0		15.0	
16.0			12.19	12.10	11.90	11.84	11.59	11.49	11.39	11.23	11.13	11.04	10.88	10.62	16.0		16.0	
18.0			10.75	10.39	10.23	10.13	10.04	9.87	9.78	9.52	9.42	9.32	9.16	8.90	18.0		18.0	
20.0			17.65m)	8.93	8.77	8.67	8.58	8.42	8.32	8.22	8.06	7.97	7.87	7.71	20.0		20.0	
22.0			8.79	8.79	7.73	7.63	7.54	7.37	7.27	7.18	7.02	6.92	6.83	6.66	22.0		22.0	
24.0			20.25m)	7.35	7.35	6.78	6.68	6.52	6.42	6.33	6.16	6.07	5.97	5.81	24.0		24.0	
26.0			22.85m)	6.06	6.06	6.06	5.79	5.63	5.54	5.44	5.28	5.19	5.10	4.94	26.0		26.0	
28.0			25.45m)	5.21	5.21	5.21	5.05	4.96	4.96	4.86	4.70	4.61	4.51	4.36	28.0		28.0	
30.0							4.56	4.46	4.46	4.37	4.20	4.11	4.02	3.86	30.0		30.0	
32.0							4.20	3.84	3.84	3.75	3.59	3.50	3.41	3.26	32.0		32.0	
34.0							30.64m)	3.61	3.61	3.39	3.23	3.14	3.05	2.90	34.0		34.0	
36.0								33.24m)	2.99	2.99	2.82	2.73	2.65	2.50	36.0		36.0	
38.0									35.84m)	2.55	2.55	2.46	2.37	2.23	38.0		38.0	

2.3.2 QUY80A Load Chart 2 (Runner)

Tipping load: 75%

Unit: t

Length (m) Radius (m)	13	16	19	22	25	28	31	34	37	40	43	46	49	52	55	58
4.0	8.00															
4.5	8.00	8.00	(5.15m)													4.5
5.0	8.00	8.00	8.00	(5.77m)												5.0
5.5	8.00	8.00	8.00	8.00	(6.40m)											5.5
6.0	8.00	8.00	8.00	8.00	8.00											6.0
6.5	8.00	8.00	8.00	8.00	8.00											6.5
7.0	8.00	8.00	8.00	8.00	8.00	8.00	(7.65m)									7.0
7.5	8.00	8.00	8.00	8.00	8.00	8.00	8.00	(8.27m)								7.5
8.0	8.00	8.00	8.00	8.00	8.00	8.00	8.00	8.00	(8.89m)							8.0
8.5	8.00	8.00	8.00	8.00	8.00	8.00	8.00	8.00	8.00	(9.52m)						8.5
9.0	8.00	8.00	8.00	8.00	8.00	8.00	8.00	8.00	8.00	8.00	(10.14m)	(10.76m)				9.0
10.0	8.00	8.00	8.00	8.00	8.00	8.00	8.00	8.00	8.00	8.00	8.00	8.00	(11.38m)			10.0
11.0	8.00	8.00	8.00	8.00	8.00	8.00	8.00	8.00	8.00	8.00	8.00	8.00	8.00	(12.64m)		11.0
12.0	8.00	8.00	8.00	8.00	8.00	8.00	8.00	8.00	8.00	8.00	8.00	8.00	8.00	8.00	8.00	12.0
13.0	8.00	8.00	8.00	8.00	8.00	8.00	8.00	8.00	8.00	8.00	8.00	8.00	8.00	8.00	8.00	13.0
14.0	(12.46m)	8.00	8.00	8.00	8.00	8.00	8.00	8.00	8.00	8.00	8.00	8.00	8.00	8.00	8.00	14.0
15.0		8.00	8.00	8.00	8.00	8.00	8.00	8.00	8.00	8.00	8.00	8.00	8.00	8.00	8.00	15.0
16.0			8.00	8.00	8.00	8.00	8.00	8.00	8.00	8.00	8.00	8.00	8.00	8.00	8.00	16.0
18.0			8.00	8.00	8.00	8.00	8.00	8.00	8.00	8.00	8.00	8.00	8.00	8.00	8.00	18.0
20.0			(17.65m)	8.00	8.00	8.00	8.00	8.00	8.00	8.00	8.00	8.00	8.00	8.00	8.00	20.0
22.0				8.00	8.00	8.00	8.00	8.00	8.00	8.00	7.90	7.78	7.67	7.48	7.36	22.0
24.0				(20.25m)	8.00	7.73	7.59	7.38	7.25	7.13	6.93	6.82	6.70	6.51	6.39	24.0
26.0					(22.85m)	7.14	6.79	6.58	6.45	6.32	6.12	6.00	5.89	5.69	5.57	26.0
28.0						(25.45m)	6.11	5.89	5.76	5.64	5.43	5.31	5.20	5.00	4.88	28.0
30.0								5.31	5.17	5.05	4.84	4.72	4.60	4.40	4.28	30.0
32.0								5.13	4.66	4.53	4.32	4.20	4.08	3.88	3.76	32.0
34.0								(30.64m)	4.37	4.08	3.87	3.75	3.63	3.43	3.31	34.0
36.0									(33.24m)	3.71	3.47	3.35	3.23	3.02	2.90	36.0
38.0										(35.84m)	3.11	2.99	2.87	2.66	2.54	38.0

80A Operation Manual

Chapter two Technical Data

2. 3. 3 QUY80A Load Chart 3 (Fly jib)

Tipping load: 75%

Unit: t

Main boom length (m)	37						40						43						46						49						52	
	9		13.5		18		9		13.5		18		9		13.5		18		9		13.5		18		9		13.5		18		52	
	15°	30°	15°	30°	15°	30°	15°	30°	15°	30°	15°	30°	15°	30°	15°	30°	15°	30°	15°	30°	15°	30°	15°	30°	15°	30°	15°	30°	52			
Jib length (m)	9		13.5		18		9		13.5		18		9		13.5		18		9		13.5		18		9		13.5		18		52	
Jib angle°	15° 30°		15° 30°		15° 30°		15° 30°		15° 30°		15° 30°		15° 30°		15° 30°		15° 30°		15° 30°		15° 30°		15° 30°		15° 30°		15° 30°		15° 30°		52	
Boom angle°	15° 30°		15° 30°		15° 30°		15° 30°		15° 30°		15° 30°		15° 30°		15° 30°		15° 30°		15° 30°		15° 30°		15° 30°		15° 30°		15° 30°		15° 30°		52	
58	5.50	5.21	4.77	4.00	4.19	3.20	4.94	4.69	4.30	4.00	3.79	3.20	4.37	4.16	3.82	3.58	3.37	3.11	3.90	3.72	3.42	3.21	3.02	2.80	3.47	3.32	3.05	2.87	2.69	2.50	2.65	2.49
59	5.71	5.39	4.95	4.00	4.34	3.20	5.13	4.87	4.48	4.00	3.94	3.20	4.56	4.33	3.99	3.72	3.52	3.20	4.08	3.88	3.58	3.35	3.16	2.92	3.64	3.47	3.20	3.00	2.83	2.62	2.79	2.63
60	5.93	5.50	5.14	4.00	4.51	3.20	5.35	5.05	4.66	4.00	4.10	3.20	4.76	4.51	4.16	3.87	3.67	3.20	4.27	4.06	3.75	3.50	3.31	3.04	3.82	3.64	3.36	3.15	2.98	2.74	2.95	2.77
61	6.17	5.50	5.35	4.00	4.69	3.20	5.57	5.25	4.85	4.00	4.27	3.20	4.97	4.70	4.35	4.00	3.84	3.20	4.48	4.24	3.93	3.65	3.47	3.18	4.02	3.82	3.54	3.30	3.13	2.87	3.12	2.91
62	6.43	5.50	5.57	4.00	4.88	3.20	5.82	5.47	5.06	4.00	4.46	3.20	5.21	4.91	4.55	4.00	4.02	3.20	4.70	4.44	4.12	3.82	3.65	3.20	4.23	4.01	3.72	3.46	3.30	3.01	3.30	3.07
63	6.70	5.50	5.80	4.00	5.00	3.20	6.08	5.50	5.29	4.00	4.65	3.20	5.45	5.13	4.77	4.00	4.21	3.20	4.93	4.65	4.33	4.00	3.83	3.20	4.45	4.21	3.92	3.63	3.47	3.16	3.49	3.24
64	7.00	5.50	6.05	4.00	5.00	3.20	6.36	5.50	5.53	4.00	4.86	3.20	5.72	5.36	5.00	4.00	4.41	3.20	5.19	4.88	4.55	4.00	4.03	3.20	4.70	4.43	4.13	3.81	3.66	3.20	3.69	3.42
65	7.32	5.50	6.32	4.00	5.00	3.20	6.66	5.50	5.79	4.00	5.00	3.20	6.01	5.50	5.25	4.00	4.63	3.20	5.46	5.12	4.79	4.00	4.24	3.20	4.96	4.66	4.36	4.00	3.87	3.20	3.92	3.61
66	7.66	5.50	6.61	4.00	5.00	3.20	6.99	5.50	6.06	4.00	5.00	3.20	6.32	5.50	5.51	4.00	4.86	3.20	5.76	5.38	5.05	4.00	4.46	3.20	5.24	4.91	4.61	4.00	4.09	3.20	4.16	3.82
67	8.00	5.50	6.93	4.00	5.00	3.20	7.34	5.50	6.37	4.00	5.00	3.20	6.66	5.50	5.80	4.00	5.00	3.20	6.08	5.50	5.32	4.00	4.71	3.20	5.55	5.18	4.88	4.00	4.33	3.20	4.42	4.00
68	8.00	5.50	7.00	4.00	5.00	3.20	7.73	5.50	6.69	4.00	5.00	3.20	7.03	5.50	6.12	4.00	5.00	3.20	6.43	5.50	5.63	4.00	4.97	3.20	5.89	5.47	5.17	4.00	4.58	3.20	4.70	4.00
69	8.00	5.50	7.00	4.00	5.00	3.20	8.00	5.50	7.00	4.00	5.00	3.20	7.43	5.50	6.46	4.00	5.00	3.20	6.82	5.50	5.96	4.00	5.00	3.20	6.25	5.50	5.49	4.00	4.86	3.20	5.00	4.00
70	8.00	5.50	7.00	4.00	5.00	3.20	8.00	5.50	7.00	4.00	5.00	3.20	7.87	5.50	6.83	4.00	5.00	3.20	7.24	5.50	6.32	4.00	5.00	3.20	6.66	5.50	5.83	4.00	5.00	3.20	5.94	4.00
71	8.00	5.50	7.00	4.00	5.00	3.20	8.00	5.50	7.00	4.00	5.00	3.20	8.00	5.50	7.00	4.00	5.00	3.20	7.70	5.50	6.71	4.00	5.00	3.20	7.10	5.50	6.21	4.00	5.00	3.20	5.71	4.00
72	8.00	5.50	7.00	4.00	5.00	3.20	8.00	5.50	7.00	4.00	5.00	3.20	8.00	5.50	7.00	4.00	5.00	3.20	8.00	5.50	7.00	4.00	5.00	3.20	7.59	5.50	6.63	4.00	5.00	3.20	6.11	4.00
73	8.00	5.50	7.00	4.00	5.00	3.20	8.00	5.50	7.00	4.00	5.00	3.20	8.00	5.50	7.00	4.00	5.00	3.20	8.00	5.50	7.00	4.00	5.00	3.20	8.00	5.50	7.00	4.00	5.00	3.20	6.56	4.00
74	8.00	5.50	7.00	4.00	5.00	3.20	8.00	5.50	7.00	4.00	5.00	3.20	8.00	5.50	7.00	4.00	5.00	3.20	8.00	5.50	7.00	4.00	5.00	3.20	8.00	5.50	7.00	4.00	5.00	3.20	7.00	4.00
75	8.00	5.50	7.00	4.00	5.00	3.20	8.00	5.50	7.00	4.00	5.00	3.20	8.00	5.50	7.00	4.00	5.00	3.20	8.00	5.50	7.00	4.00	5.00	3.20	8.00	5.50	7.00	4.00	5.00	3.20	7.00	4.00
76	8.00	5.50	7.00	4.00	5.00	3.20	8.00	5.50	7.00	4.00	5.00	3.20	8.00	5.50	7.00	4.00	5.00	3.20	8.00	5.50	7.00	4.00	5.00	3.20	8.00	5.50	7.00	4.00	5.00	3.20	7.00	4.00
77	8.00	5.50	7.00	4.00	5.00	3.20	8.00	5.50	7.00	4.00	5.00	3.20	8.00	5.50	7.00	4.00	5.00	3.20	8.00	5.50	7.00	4.00	5.00	3.20	8.00	5.50	7.00	4.00	5.00	3.20	7.00	4.00
78	8.00	5.50	7.00	4.00	5.00	3.20	8.00	5.50	7.00	4.00	5.00	3.20	8.00	5.50	7.00	4.00	5.00	3.20	8.00	5.50	7.00	4.00	5.00	3.20	8.00	5.50	7.00	4.00	5.00	3.20	7.00	4.00

Note:

1. The actual lifting capacity is the rated load capacity in the table deducting the weight of hooks and sling cables.
2. When mounted with fly jib, the actual lifting capacity of main boom is the rated load capacity deducting the weight of fly jib, main hook and aux. hook.

Jib length (m)	9	13.5	18
Weight deducted(kg)	750	1000	1300

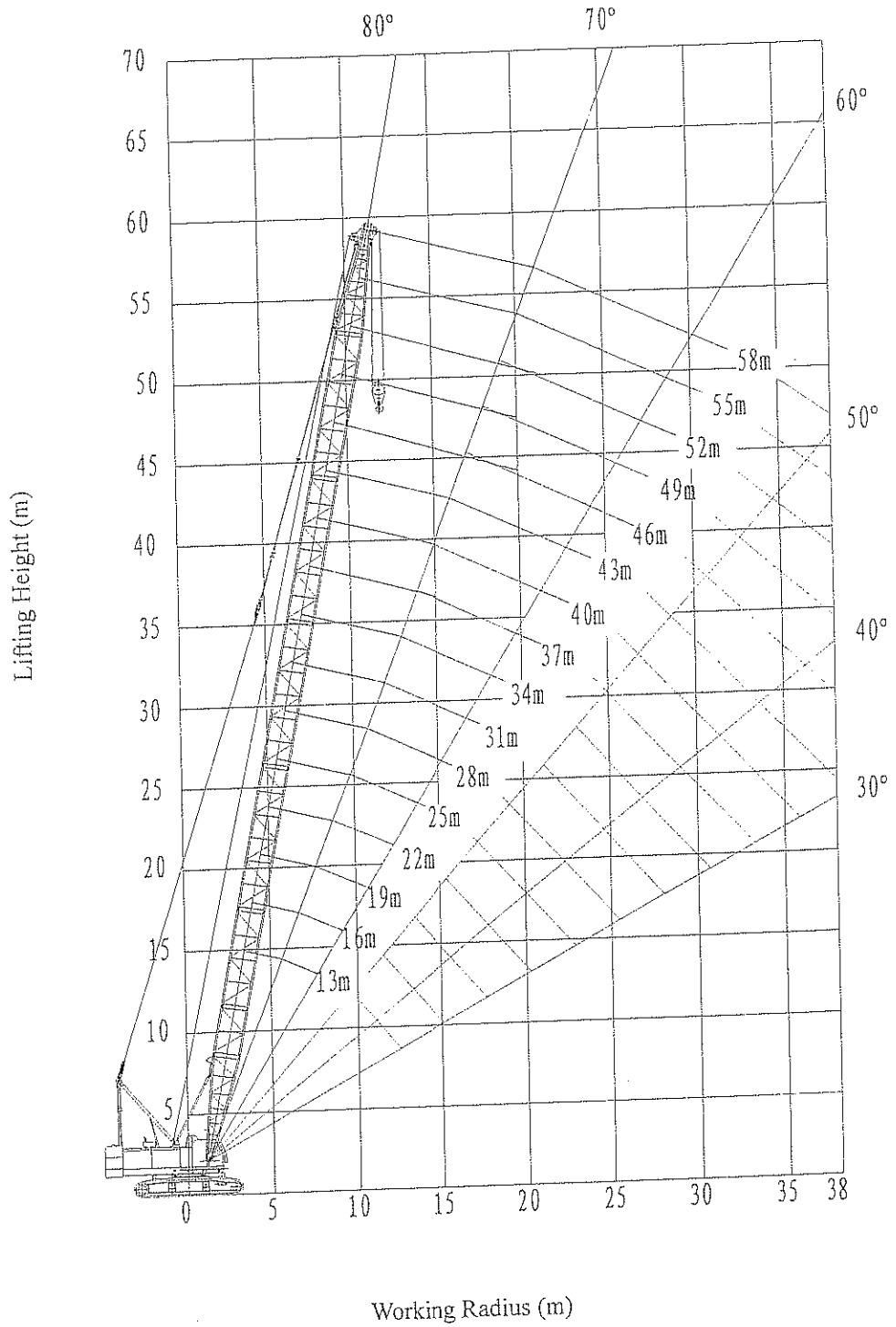
3. When mounted with fly jib, the length of main boom is 37 to 52m.
4. The weight of counterweight is 24.5t.
5. When mounted with runner, the actual lifting capacity of main boom is the rated load capacity deducting the weight of runner (0.42t), main hook and aux. hook.

Kinds of hook	Falls Weight (t)	Maximum rated load (t)										
		10	9	8	7	6	5	4	3	2	1	
80t	1.030	80	72	64	56	48	40	32	24	16	8	
50t	0.667					48	40	32	24	16	8	
25t	0.438								24	16	8	
8t	0.246										8	

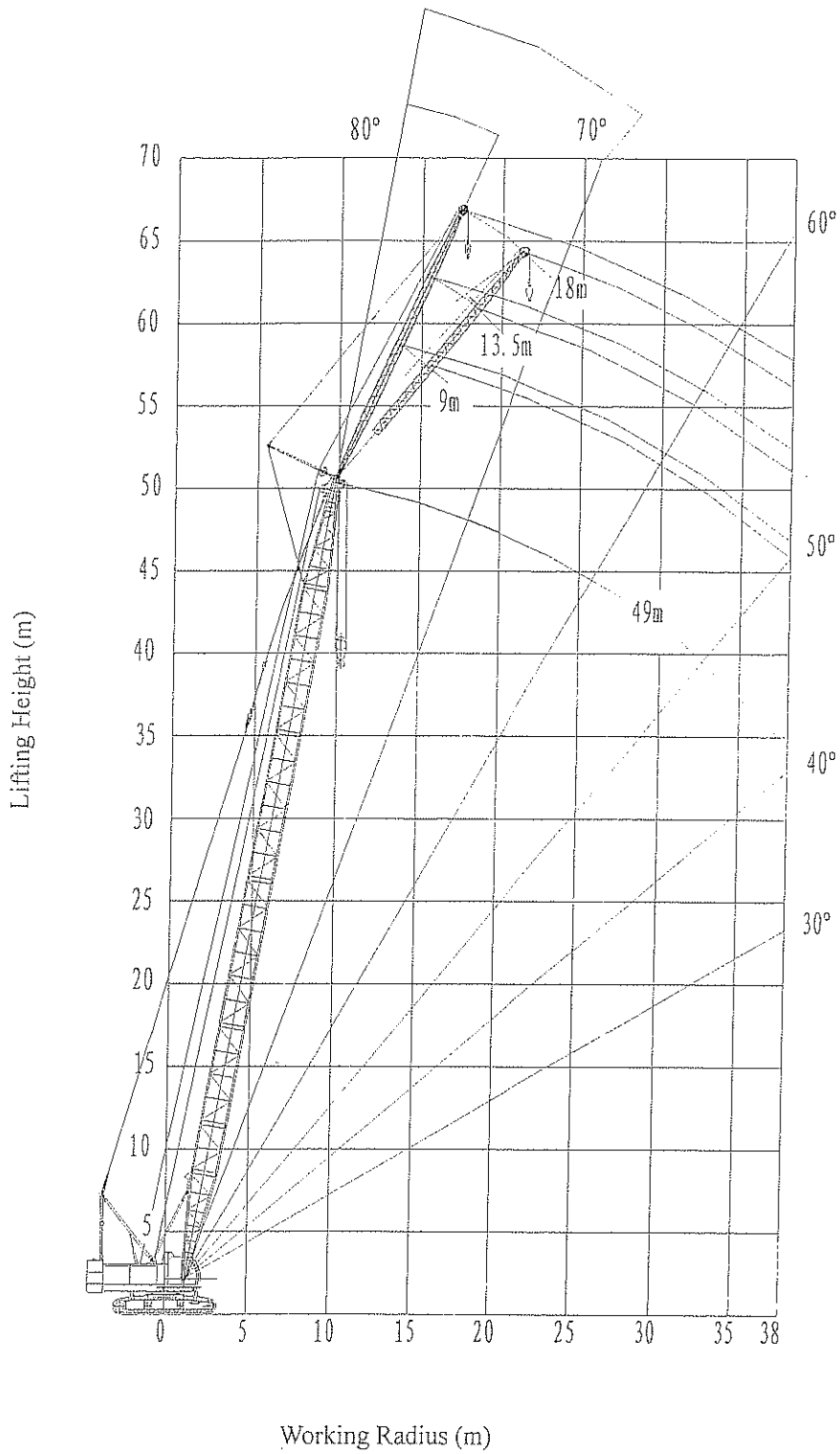
6. The maximum allowed wind pressure is 60N/m² and the maximum allowed wind speed is 9.8m/s when operating the crane.
7. The data in () is the load value in the actual working radius.

2007年11月1日

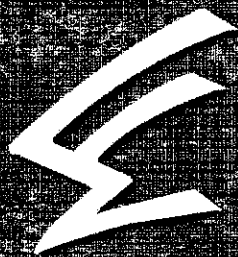
2.4 Working Range



QUY80A Curve drawing of boom rise



QUY80A Curve drawing of fly jib rise



**Add: No.2 Shuangyang Road, Shuncheng District,
Fushun, Liaoning, China (P.C: 113126)**

Oversea Customer Service:

Tel: 86-413-7642419

Fax: 86-413-7642766