



**TEREX**®



**TRUCK CRANE**  
**汽车起重机**  
**LT 1020/2**

**DATASHEET METRIC**  
**数据表 (公制)**

# LT 1020/2



**WORKS FOR YOU.™**

## Key · 关键词汇

|       |   |
|-------|---|
| ..... | 3 |
|-------|---|

## Dimensions and Specifications · 技术参数

|                                  |   |
|----------------------------------|---|
| Crane Dimensions · 起重机外形尺寸 ..... | 4 |
| Specifications · 规格参数 .....      | 5 |
| Range Diagram · 起升高度 .....       | 6 |

## Load Charts · 起重量表

|       |   |
|-------|---|
| ..... | 7 |
|-------|---|

## Technical Descriptions · 技术描述

|  |    |
|--|----|
| Lifting Capacity · 起重量 .....               | 8  |
| Boom and Components · 主臂和零件 .....          | 8  |
| Jib · 副臂 .....                             | 8  |
| Winch Performance · 起升机构工作速度 .....         | 9  |
| Crane Boom Function Speeds · 起重臂工作速度 ..... | 9  |
| Outrigger Function Speeds · 支腿工作速度 .....   | 9  |
| Outrigger Controls · 支腿操纵 .....            | 9  |
| Engine and Transmission · 发动机和变速箱 .....    | 10 |
| Hydraulics · 液压系统 .....                    | 10 |
| Chassis and Components · 底盘及其部件 .....      | 11 |
| Driver Cab · 驾驶室 .....                     | 11 |
| Operator Cab · 操纵室 .....                   | 11 |

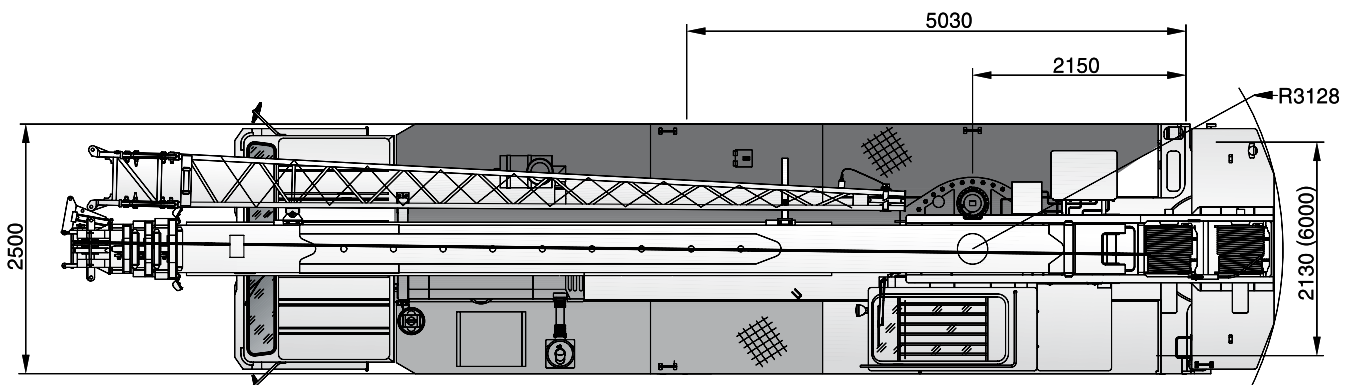
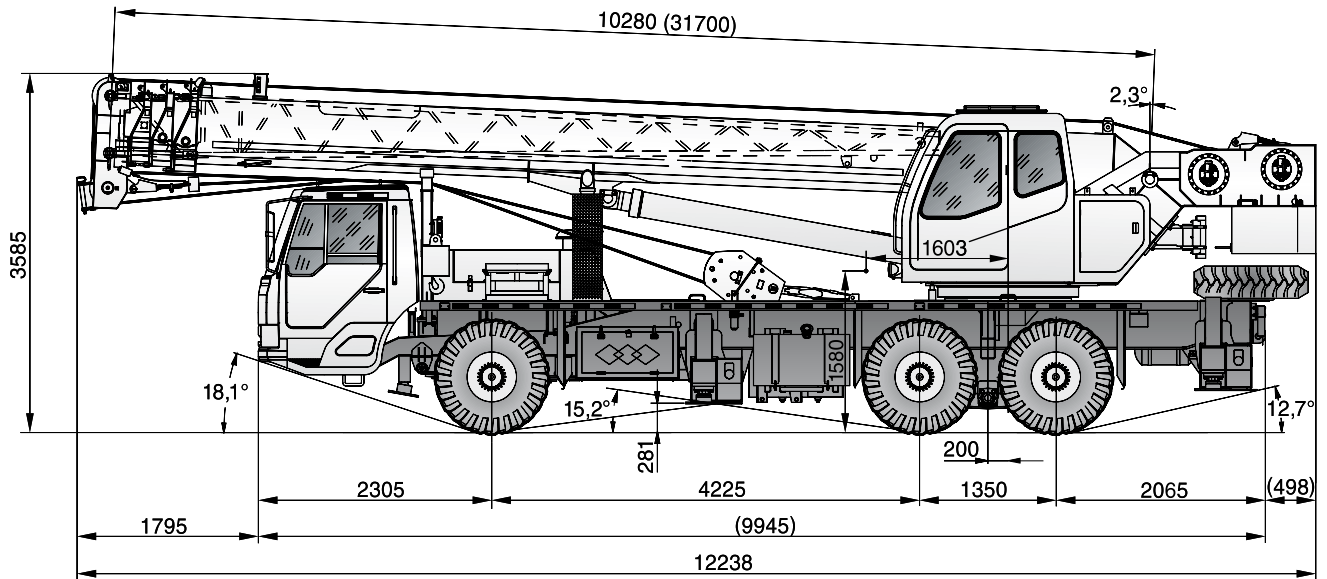


|   |   |   |  |
|---|---|---|--|
|    | Counterweight<br>配重                           |    | Main hoist<br>主起升机构                      |
|    | Outrigger<br>支腿                               |    | Auxiliary hoist<br>副起升机构                 |
|    | Radius<br>作业半径                                |    | Hoist speed<br>起升速度                      |
|    | Main boom<br>主臂                               |    | Cab<br>驾驶室                               |
|    | Boom length<br>吊臂长度                           |    | Engine<br>发动机                            |
|    | Boom with extension<br>副臂                     |    | Steering<br>转向                           |
|    | Boom angle<br>吊臂角度                            |    | Travel speed<br>行驶速度                     |
|    | Tip height<br>臂尖高度                            |    | Hydraulics<br>液压装置                       |
|    | Hook block<br>吊钩总成                            |    | Transmission<br>变速箱                      |
|   | Slewing / Allowable swinging range<br>回转/回转范围 |   | Air conditioning / Cab heating<br>空调/取暖器 |
|  | Working speeds<br>作业速度                        |  | Gradeability – road<br>爬坡度 – 公路          |
|  | Working temperature<br>作业温度                   |   |  |

# CRANE DIMENSIONS

## 起重机外形尺寸

LT 1020/2



**TEREX**®



# SPECIFICATIONS

## 规格参数

LT 1020/2

### Crane Weights · 起重机总重量

Gross vehicle weight (GVW) · 车辆总重量 (GVW) 26,700 kg

### Axle Loads · 桥负荷

Steering axle (axle 1) · 转向桥 (桥 1) 7,600 kg

Drive axles (axle 2 and 3) · 驱动桥 (桥 2 和 3) 19,100 kg

### Ground Clearances · 通过性参数

Minimum ground clearance · 最小离地间隙 281 mm

Ramp angle · 纵向通过角 15.2°

Approach angle · 接近角 18.1°

Departure angle · 离去角 12.7°

### Wheel Base · 轴距

Distance between axle 1 and 2 · 桥 1 和 2 之间的距离 4,225 mm

Distance between axle 2 and 3 · 桥 2 和 3 之间的距离 1,350 mm

### Wheel Track · 轮距

Axle 1 · 桥 1 2,088 mm

Axle 2 and 3 · 桥 2 和 3 1,800 mm

### Outrigger Dimensions · 支腿跨距

Longitudinal span · 纵向跨距 5.03 m

Transverse span · 横向跨距 6.0 m

### Outrigger Forces · 支腿反力

Maximum counterforce · 最大支反力 296 kN

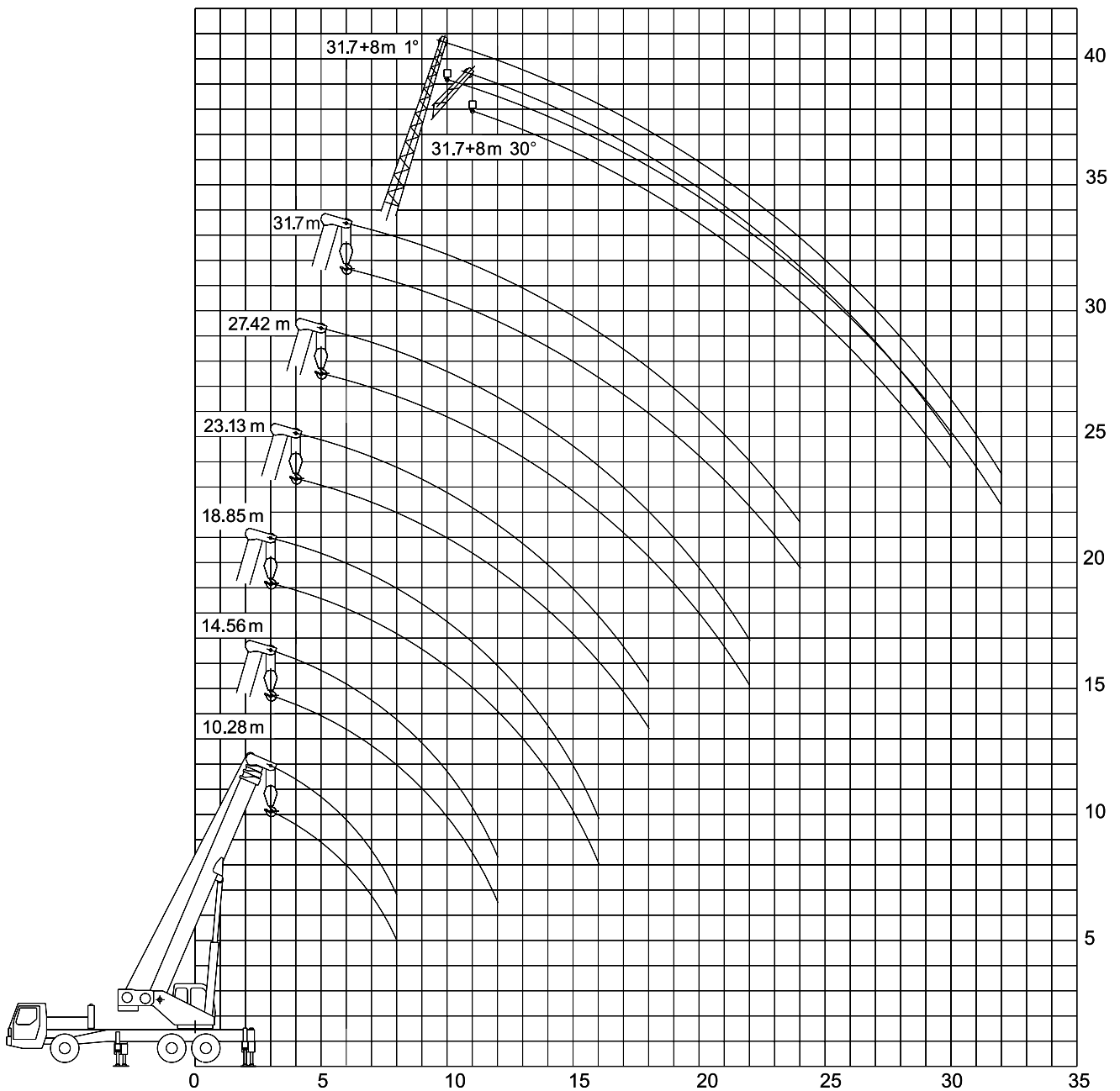
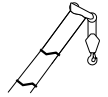
### Overall Dimensions · 外形尺寸

(Length x Width x Height) · (长 x 宽 x 高) 12.238 m x 2.5 m x 3.585 m

# RANGE DIAGRAM

## 起升高度

LT 1020/2



**TEREX**



# LOAD CHARTS

## 起重量表

# LT 1020/2

| Fully extended · 支腿全伸 (100%) |         |         |         |         |         |        | 360°     |      |                     |
|------------------------------|---------|---------|---------|---------|---------|--------|----------|------|---------------------|
|                              | 10.28 m | 14.56 m | 18.85 m | 23.13 m | 27.42 m | 31.7 m | 31.7+8 m |      |                     |
| m                            | kg      |         |         |         |         |        | 1°       | 30°  | m                   |
| 3                            | 20000   | 14000   | 12000   | -       | -       | -      | -        | -    | 3                   |
| 3.5                          | 20000   | 14000   | 12000   | -       | -       | -      | -        | -    | 3.5                 |
| 4                            | 19300   | 14000   | 12000   | 9700    | -       | -      | -        | -    | 4                   |
| 4.5                          | 18600   | 14000   | 12000   | 9700    | 9700    | -      | -        | -    | 4.5                 |
| 5                            | 17100   | 14000   | 12000   | 9700    | 7500    | -      | -        | -    | 5                   |
| 5.5                          | 15200   | 13500   | 12000   | 9700    | 7500    | -      | -        | -    | 5.5                 |
| 6                            | 13200   | 13000   | 11500   | 9700    | 7500    | 6100   | -        | -    | 6                   |
| 6.5                          | 11700   | 12000   | 11000   | 9000    | 7500    | 6100   | -        | -    | 6.5                 |
| 7                            | 10500   | 10600   | 10550   | 8500    | 7000    | 6100   | -        | -    | 7                   |
| 8                            | 8500    | 8500    | 8550    | 7650    | 6500    | 5500   | -        | -    | 8                   |
| 9                            | -       | 6800    | 7050    | 7050    | 6000    | 5000   | -        | -    | 9                   |
| 10                           | -       | 5700    | 5800    | 5850    | 5500    | 4600   | 2500     | -    | 10                  |
| 11                           | -       | 4600    | 4900    | 5000    | 5000    | 4100   | 2400     | 1500 | 11                  |
| 12                           | -       | 4100    | 4200    | 4200    | 4200    | 3900   | 2300     | 1450 | 12                  |
| 14                           | -       | -       | 3500    | 3200    | 3200    | 3100   | 2200     | 1400 | 14                  |
| 16                           | -       | -       | 2700    | 2500    | 2500    | 2400   | 2050     | 1350 | 16                  |
| 18                           | -       | -       | -       | 1800    | 2000    | 1800   | 2000     | 1300 | 18                  |
| 20                           | -       | -       | -       | -       | 1500    | 1400   | 1600     | 1250 | 20                  |
| 22                           | -       | -       | -       | -       | 1150    | 1050   | 1300     | 1200 | 22                  |
| 24                           | -       | -       | -       | -       | -       | 700    | 1000     | 1100 | 24                  |
| 26                           | -       | -       | -       | -       | -       | -      | 800      | 950  | 26                  |
| 28                           | -       | -       | -       | -       | -       | -      | 600      | 700  | 28                  |
| 30                           | -       | -       | -       | -       | -       | -      | 400      | 500  | 30                  |
| 32                           | -       | -       | -       | -       | -       | -      | -        | 300  | 32                  |
| Parts of Line<br>倍率          | 6       |         | 4       |         | 3       |        | 1        |      | Parts of Line<br>倍率 |

## Notes · 说明

The values in table are rated lifting capacities of crane on solid ground and in a level state. The working radius in the table are actual radius after load lifting. The values above the bold line are based on crane strength, those below the bold line are based on crane stability. While lifting with boom length of 10.28 m each section must be fully retracted.

The tabulated load ratings includes weight of hooks, main hook is 300 kg and auxiliary hook is 100 kg. While the jib is in extension state the rated load capacity lifted by main boom must be reduced by 400 kg.

When the main hook is at the head of main boom: lifting with jib, the lifting capacities of jib must be reduced by 300 kg; When working with head pulley, the rated lifting capacities at each section must be reduced by 300 kg, but max. lifting capacities is 2500 kg; Using main hook when auxiliary hook at the head of pulley of the boom tip, the rated lifting weight of each part of lifting boom should be reduced by 100 kg.

When the fifth outrigger is not in use, no lifting in front of 120° range. On the fifth outrigger, according to the tabulated rated lifting capacities in 360° range. If the boom length exceeds the specified values, comparing it's capacities with the next longer one's, the load to the lift will be with in the smaller one's.

表中的数据为坚硬地面上水平状态下的额定起重量。表中的作业半径是负载起吊后的实际半径。

粗线上的数据基于起重机的强度，粗线下的数据基于起重机的稳定性。使用 10.28 m 长的起重臂起吊时，各节臂必须处于完全缩回状态。


表中的负载值包括了吊钩的种类，主钩是 300 kg，副钩是 100 kg。在副臂处于完全伸出状态时，主臂的起重量必须减去 400 kg。

当主钩位于主臂头部时：使用副臂起吊时，副臂的起重量必须减去 300 kg；使用臂端单滑轮作业时，各部分的起重量必须减去 300 kg，但是最大起重量是 2500 kg；在副钩位于臂端单滑轮的情况下使用主钩时，起重臂各部分的额定起重量必须减少 100 kg。


当不使用第五个支腿时，在 120° 的范围前面不能起吊。在第五个支腿上，根据表中 360° 范围中的额定起重量进行确定。

如果臂长超过的规定的的数据，使用下一个较长的比较其起重量，起重的负荷将为较小的一个。

### Lifting Capacity · 起重量

|   |  |          |
|---|--|----------|
|  | Maximum rated capacity for main hook<br>主钩额定起重量      | 20 t     |
|   | Maximum rated capacity for auxiliary hook<br>副钩额定起重量 | 2.5 t    |
|   | Maximum load moment<br>最大起重力矩                        | 838 kN.m |

### Boom and Components · 主臂和零件

|   |   |                  |
|---|---|------------------|
|   | Profile<br>截面形状   | Hexagonal<br>六边形 |
|   | Number of sections<br>节数                                | 4                |
|   | Base boom length<br>基本臂长度                               | 10.28 m          |
|   | Base boom maximum lift height<br>基本臂最大起升高度              | 10.15 m          |
|   | Base boom maximum working radius<br>基本臂最大作业半径           | 8 m              |
|   | Fully extended boom length<br>全伸臂长度                     | 31.7 m           |
|  | Fully extended boom maximum lift height<br>全伸臂最大起升高度    | 31.67 m          |
|   | Fully extended boom maximum working radius<br>全伸臂最大作业半径 | 24 m             |





### Jib · 副臂

|   |  |         |
|---|--|---------|
|  | Length of fully extended boom and fully extended jib<br>主臂、副臂完全伸出的长度 | 39.7 m  |
|   | Fully extended boom maximum lift height with jib<br>安装副臂最大起升高度       | 39.17 m |
|   | Fully extended boom maximum working radius with jib<br>安装副臂最大作业半径    | 32 m    |
|  | Slewing speed<br>回转速度  | 2.1 rpm |





### Winch Performance · 起升机构工作速度

|   |   |   |             |
|---|---|---|-------------|
|  |  | Main hoist – 3rd layer – single rope speed<br>主卷扬 – 第三层 – 单绳速度      | 0-140 m/min |
|  |  | Auxiliary hoist – 2nd layer – single rope speed<br>辅卷扬 – 第二层 – 单绳速度 | 0-98 m/min  |

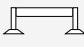

### Crane Boom Function Speeds · 起重臂工作速度

|   |                        |        |
|---|------------------------|--------|
|  | Elevation – up<br>起臂   | 85 sec |
|   | Elevation – down<br>落臂 | 75 sec |
|   | Full extension<br>全伸   | 85 sec |
|   | Full retract<br>全缩     | 45 sec |


### Outrigger Function Speeds · 支腿工作速度

|   |   |                                     |        |
|---|---|-------------------------------------|--------|
|  |  | Simultaneous full extension<br>同步伸出 | 45 sec |
|   |   | Simultaneous full retract<br>同步收缩   | 50 sec |


### Outrigger Controls · 支腿操纵

|   |  |                      |
|---|--|----------------------|
|  | Dual outrigger controls – LH and RH side<br>支腿操纵 – 左侧和右侧 | Dual control<br>两侧操纵 |
|  | Ambient working temperature<br>作业温度                      | -20 °C – +40 °C      |

### Engine and Transmission · 发动机和变速箱

|   |  |   |
|---|--|---|
|    | Weichai power<br>潍柴动力  | WP 6.240                                    |
|   | Emission compliance<br>排放标准  | National Exhaust Standard III<br>国家排放标准 III |
|   | Number of cylinders<br>缸数  | 6   |
|   | Aspiration<br>进气   | Turbocharged<br>涡轮增压                        |
|   | Rated power<br>额定功率  | 176 kW @ 2500 rpm                           |
|   | Maximum torque<br>最大扭矩   | 810 Nm @ 1400 – 1500 rpm                    |
|   | Estimated fuel consumption per 100 km<br>100 km 油耗                 | 45 L  |
|   | Fuel type<br>燃油类型  | Diesel<br>柴油                                |
|   | Fuel tank capacity<br>燃油箱容积  | 270 L                                       |
|   | Lowest start temperature<br>最低启动温度                                 | -40 °C                                      |
|  | Manual gearbox with ZF style air-boosted shifting<br>ZF 气动助力式手动变速箱 | Manual air-boosted shift<br>气动助力式手动变速       |

### Hydraulics · 液压装置

|   |   |                                       |
|---|---|---------------------------------------|
|  | Combined system with dual pump<br>带有双泵的组合系统   | Double pump<br>双泵                     |
|   | Hydraulic controls:<br>液压控制:                  |                                       |
|   | Mechanical, multi-lever controls<br>机械式, 多杆控制 | Mechanical lever – Option<br>机械杆 – 选装 |



# TECHNICAL DESCRIPTIONS



## 技术描述

LT 1020/2

### Chassis and Components · 底盘及其部件

|   |   |                         |
|---|---|-------------------------|
|   | Axle drive system<br>桥驱动系统                              | 6 x 4                   |
|   | Fifth outrigger for 360° boom operation<br>360° 作业的第五支腿 | Fifth outrigger<br>第五支腿 |
|   | Minimum turning radius<br>最小转弯半径                        | 11 m                    |
|  | Maximum gradeability<br>最大爬坡度                           | 28 %                    |
|  | Maximum traveling speed<br>最高行驶速度                       | 77 km/h                 |

### Driver Cab · 驾驶室

|   |                                      |
|---|--------------------------------------|
|   | Adjustable driver seat<br>可调式司机座椅    |
|   | Adjustable steering wheel<br>可调式方向盘  |
|  | Airconditioner and heater<br>空调和加热装置 |

### Operator Cab · 操纵室

|   |  |
|---|--|
|  | Adjustable seat<br>可调式座椅                   |
|  | Load moment limiter display<br>载荷力矩限制装置的显示 |
|  | Airconditioner and heater<br>空调和加热装置       |

[www.terexcranes.com](http://www.terexcranes.com)

Effective Date: August 2010. Product specifications and prices are subject to change without notice or obligation. The photographs and/or drawings in this document are for illustrative purposes only. Refer to the appropriate Operator's Manual for instructions on the proper use of this equipment. Failure to follow the appropriate Operator's Manual when using our equipment or to otherwise act irresponsibly may result in serious injury or death. The only warranty applicable to our equipment is the standard written warranty applicable to the particular product and sale and Terex makes no other warranty, express or implied. Products and services listed may be trademarks, service marks or trade-names of Terex Corporation and/or its subsidiaries in the USA and other countries. All rights are reserved. Terex® is a registered trademark of Terex Corporation in the USA and many other countries. Copyright 2010 Terex Corporation.

生效日期：2010年8月。产品技术参数和价格如有更改，恕不另行通知。本文档中的图片和/或图纸仅作举例用途。有关正确使用本设备的说明，请参阅合适的操作手册。如果在使用本设备时，未按照操作手册正确操作，可导致严重的人身伤害或死亡。适用于我们设备的唯一保证是适用于特别产品和销售的标准书写保证，特雷克斯不做任何其他保证、表示或暗示。以上所列产品和服务为特雷克斯公司和/或其子公司在美国和其他国家/地区的商标、服务标记或厂商名称。保留所有版权。Terex® 为特雷克斯公司在美国和许多其他国家的注册商标。© 2010，特雷克斯公司版权所有。

Terex Cranes, Global Marketing, Dinglerstraße 24, 66482 Zweibrücken, Germany  
Tel. +49 (0) 6332 830, Email: [info.cranes@terex.com](mailto:info.cranes@terex.com), [www.terexcranes.com](http://www.terexcranes.com)

特雷克斯起重机，全球销售，德国 Dinglerstraße 24, 66482 Zweibrücken  
电话：+49 (0) 6332 830, Email: [info.cranes@terex.com](mailto:info.cranes@terex.com), [www.terexcranes.com](http://www.terexcranes.com)

Brochure Reference: TC-DS-M-E/C-LT1020/2 - 08.10  
手册参考：TC-DS-M-E/C-LT1020/2 - 08.10



**TEREX**®



**WORKS FOR YOU.™**