

# FLAT TOP TOWER CRANE

**Specifications:**

- ▶ Max jib length: 246.1 ft
- ▶ Capacity at max length: 6,393 lbs
- ▶ Max capacity: 35,274 lbs

**WORKS FOR YOU.™**

# KEY

## Zeichenerklärung · Légende · Leyenda · Legenda



Hoisting · Heben · Levage · Elevación · Sollevamento



Trolleying · Katzfahren · Distribution · Distribución · Traslazione carrello



Slewing · Schwenken · Orientation · Orientació · Rotazione



Travelling · Schienenfahren · Translation · Traslación · Traslazione



Directive on noise level · Richtlinie für den Schall-Leistungspegel · Directive sur le niveau acoustique · Directiva sobre el nivel acustico · Direttiva sul livello acustico



Consult us · Auf Anfrage · Nous consulter · Consultarnos · Consultateci



Power requirements · Geforderte Stromstärke · Puissance totale nécessaire · Potencia necesaria · Potenza totale richiesta



Power supply · Stromversorgung · Alimentation · Alimentación · Alimentazione



In service · In Betrieb · En service · En servicio · In servizio



Out of service · Außer Betrieb · Hors service · Fuera de servicio · Fuori servizio



Max. under hook height · Höchste Hakenhöhe · Hauteur maxi. sous crochet · Maxima altura bajo gancho · Altezza max. sotto gancho



Without load, without ballast, max. jib and max. height · Ohne Last und Ballast, mit Maximalausleger und Maximalhöhe · A vide, sans lest, avec flèche et hauteur maximum · Sin carga, sin lastre, con pluma y altura máxima · A vuoto, senza zavorra, braccio max., altezza max.



Counterweight · Gegengewicht · Lest de contre-flèche · Lastre de contra flecha · Zavorra controbraccio

**C25**

FEM 1004 Out of service wind condition · FEM 1004 Windverhältnisse im Außerbetriebszustand · FEM 1004 Conditions de vent hors service · FEM 1004 Condiciones de viento fuera de servicio · FEM 1004 Condizioni del vento in fuori servizio

# CONTENTS

**CTT 331-16 H20**

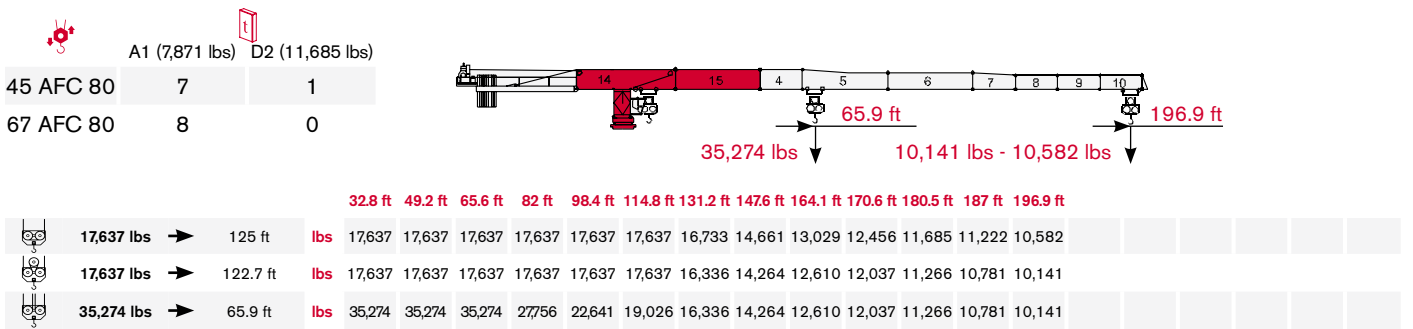
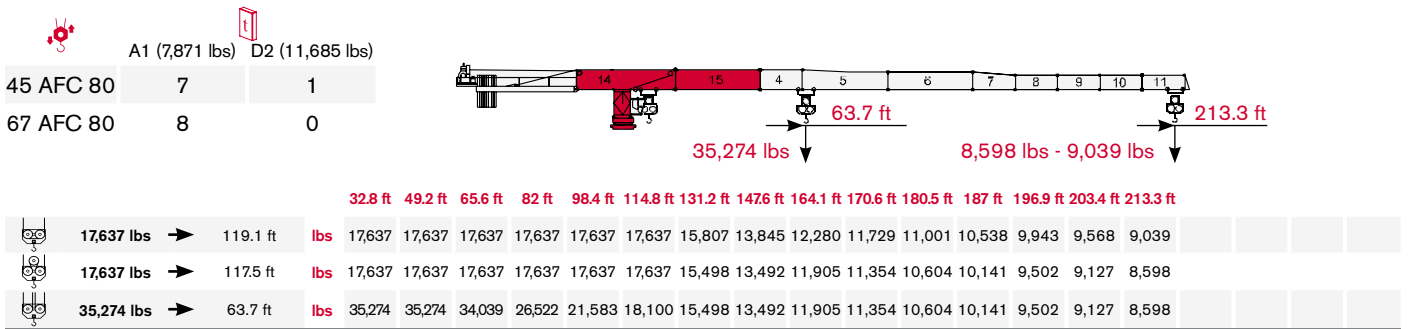
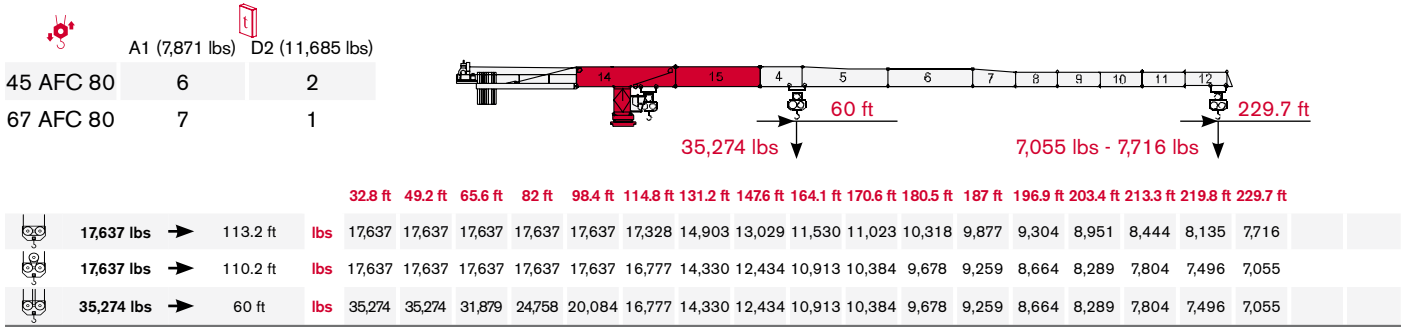
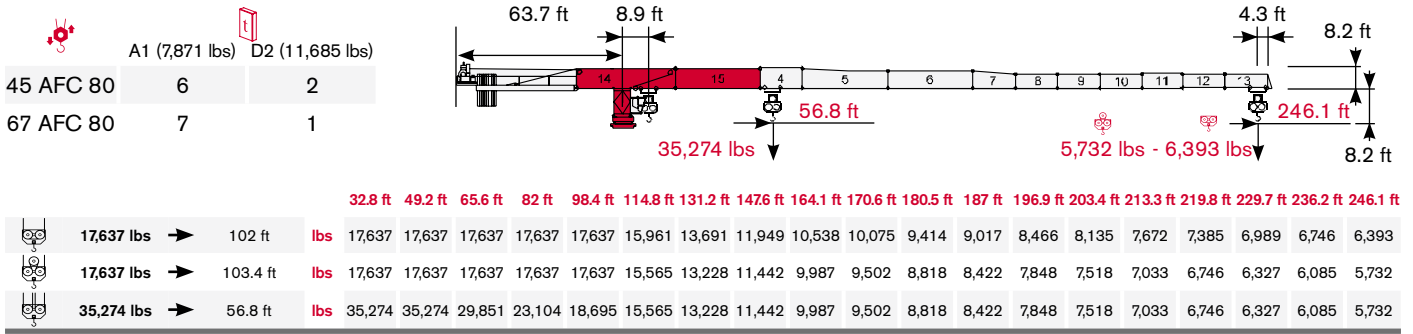
**Inhalt · Contenu · Contenido · Indice**

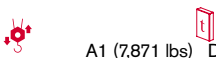
Page · Seite · Page · Pàgina · Pagina:

<b>Load Diagram · Lastkurven · Courbes de charges · Curvas de cargas · Diagramma di portata .....</b>	<b>4</b>
<b>Tower · Turm · Tour · Torre · Torre .....</b>	<b>6</b>
<b>Other configurations · Aufstellmöglichkeiten · Autres Implantations Otras Implantaciones · Altre Installazioni .....</b>	<b>7</b>
<b>Mechanisms · Antriebe · Mécanismes · Mecanismos · Meccanismi .....</b>	<b>8</b>
<b>Transportation · Transport · Transportation · Transportation · Trasporto .....</b>	<b>10</b>

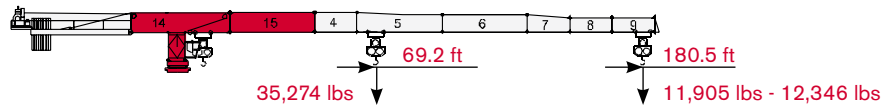
# LOAD DIAGRAM

## Lastkurven · Courbes de charges · Curvas de cargas · Diagramma di portata



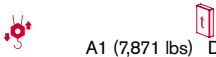
 A1 (7,871 lbs) D2 (11,685 lbs)

45 AFC 80	8	0
67 AFC 80	6	1

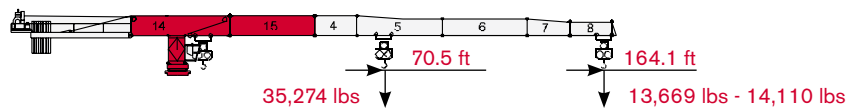


32.8 ft 49.2 ft 65.6 ft 82 ft 98.4 ft 114.8 ft 131.2 ft 147.6 ft 164.1 ft 170.6 ft 180.5 ft


	17,637 lbs	→	131.2 ft	lbs	17,637	17,637	17,637	17,637	17,637	17,637	17,637	17,637	15,476	13,757	13,162	12,346
	17,637 lbs	→	128.6 ft	lbs	17,637	17,637	17,637	17,637	17,637	17,637	17,240	15,058	13,316	12,721	11,905	
	35,274 lbs	→	69.2 ft	lbs	35,274	35,274	35,274	29,189	23,832	20,062	17,240	15,058	13,316	12,721	11,905	

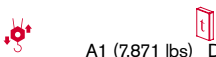
 A1 (7,871 lbs) D2 (11,685 lbs)

45 AFC 80	5	1
67 AFC 80	7	0

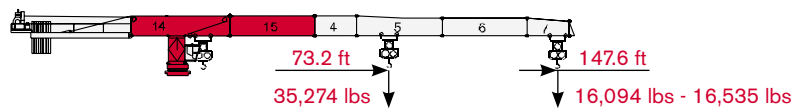


32.8 ft 49.2 ft 65.6 ft 82 ft 98.4 ft 114.8 ft 131.2 ft 147.6 ft 164.1 ft

	17,637 lbs	→	134.2 ft	lbs	17,637	17,637	17,637	17,637	17,637	17,637	17,637	15,873	14,110		
	17,637 lbs	→	131.6 ft	lbs	17,637	17,637	17,637	17,637	17,637	17,637	17,637	15,432	13,669		
	35,274 lbs	→	70.5 ft	lbs	35,274	35,274	35,274	29,917	24,427	20,547	17,681	15,432	13,669		

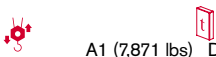
 A1 (7,871 lbs) D2 (11,685 lbs)

45 AFC 80	6	0
67 AFC 80	5	1

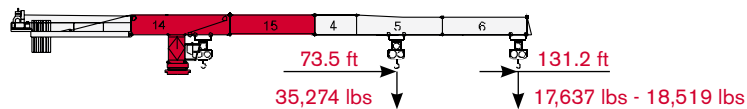


32.8 ft 49.2 ft 65.6 ft 82 ft 98.4 ft 114.8 ft 131.2 ft 147.6 ft

	17,637 lbs	→	139.4 ft	lbs	17,637	17,637	17,637	17,637	17,637	17,637	17,637	16,535		
	17,637 lbs	→	136.2 ft	lbs	17,637	17,637	17,637	17,637	17,637	17,637	17,637	16,094		
	35,274 lbs	→	73.2 ft	lbs	35,274	35,274	35,274	31,085	25,419	21,385	18,409	16,094		

 A1 (7,871 lbs) D2 (11,685 lbs)

45 AFC 80	4	1
67 AFC 80	4	1



32.8 ft 49.2 ft 65.6 ft 82 ft 98.4 ft 114.8 ft 131.2 ft


	17,637 lbs	→	131.2 ft	lbs	17,637	17,637	17,637	17,637	17,637	17,637	17,637		
	17,637 lbs	→	131.2 ft	lbs	17,637	17,637	17,637	17,637	17,637	17,637	17,637		
	35,274 lbs	→	73.5 ft	lbs	35,274	35,274	35,274	31,284	25,574	21,517	18,519		

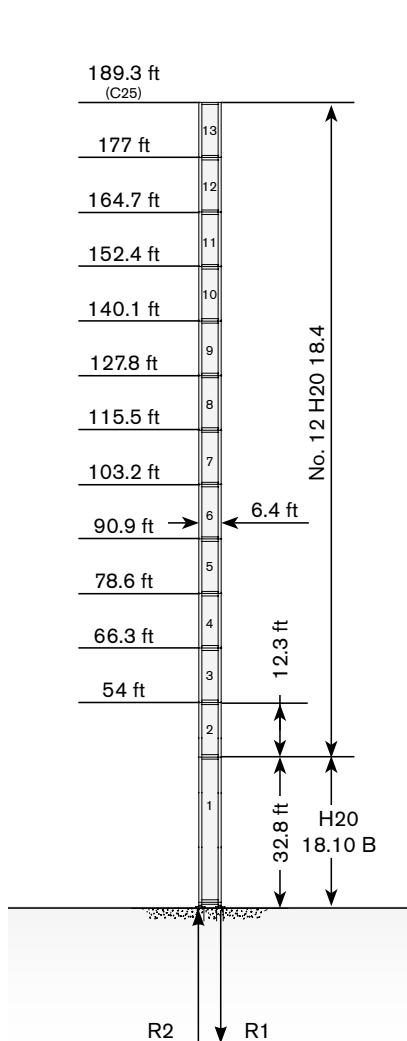
# TOWER

Turn · Tour · Torre · Torre


Standard Configurations · Standardkonfiguration · Standard Implantations · Implantaciones Standard · Installazioni Standard

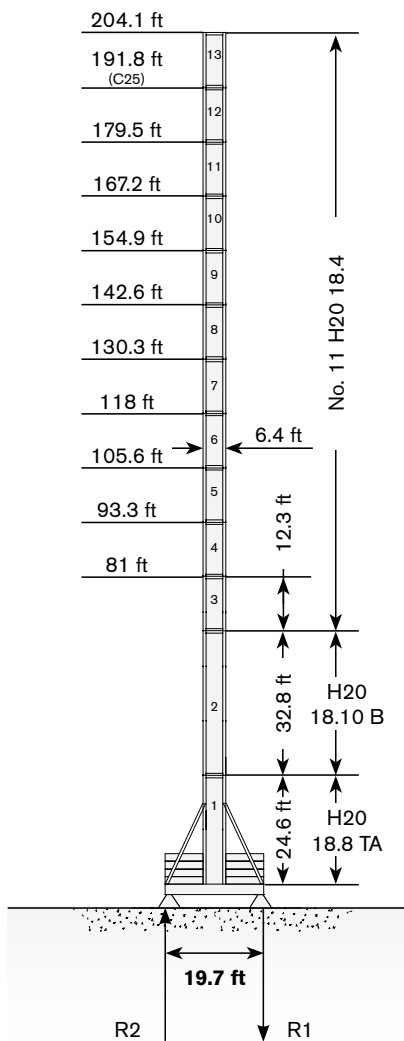
Tower: H20 & Basement: RTL

	●	◊
R1	-2640 kN	-2835 kN
R2	1990 kN	2255 kN
	870 kN	




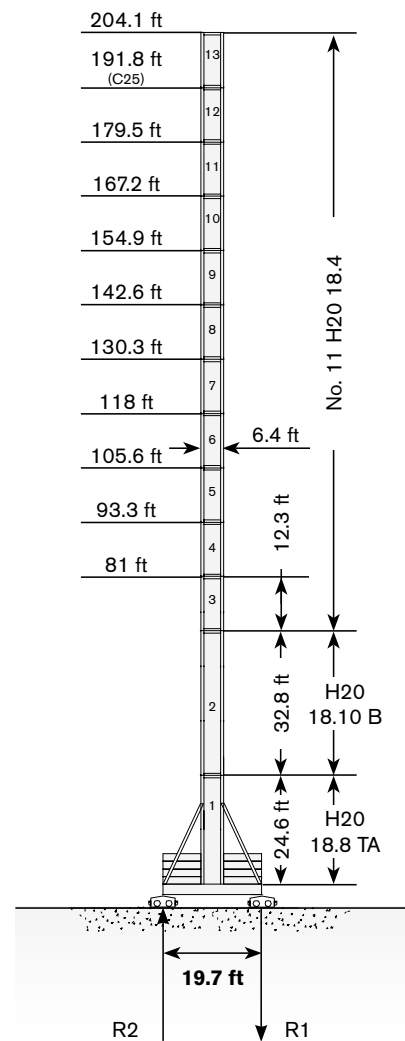
Tower: H20 & Basement: FTR

	●	◊
R1	-1435 kN	-1554 kN
R2	0 kN	-150 kN
	1070 kN	



Tower: H20 & Basement: TTR

	●	◊
R1	-1435 kN	-1554 kN
R2	0 kN	-150 kN
	1070 kN	



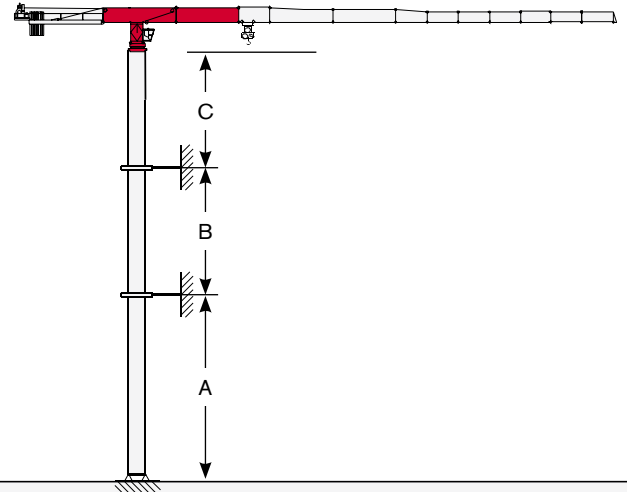
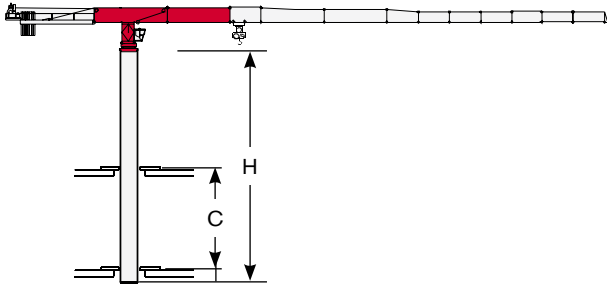
Max. under hook height · Höchste Hakenhöhe · Hauteur maxi. sous crochet · Maxima altura bajo gancho · Altezza max. sotto gancio

Different heights and tower combinations are available; please consult us · Andere Höhen und Turmkombinationen auf Anfrage · Différentes hauteurs et combinaisons de tour sont disponibles; nous consulter · Hay diferentes alturas y combinaciones de torre disponibles. Consúltenos · Altezze diverse e combinazioni di torre sono disponibili; consultateci

## Other configurations · Aufstellmöglichkeiten · Autres Implantations · Otras Implantaciones · Altre Installazioni

Bottom climbing crane · Kletterkran im Gebäude · Télescopage sur dalles · Telescopage grúa trepadora · Gru climbing

Crane tied to the structure · Geankerter Kran · Grue ancrée · Grúa anclada · Gru ancorata



**Tower: H20**

	min	max
<b>C</b>	32.8 ft	52.5 ft
<b>H</b>	73.8 ft	98.4 ft

**Tower: H20 & Basement: RTL**






	min	max
<b>A</b>	82 ft	144.4 ft
<b>B</b>	49.2 ft	73.8 ft
<b>C</b>	88.6 ft	

# MECHANISMS

Antriebe · Mécanismes · Mecanismos · Meccanismi








Power supply · Stromversorgung ·

Alimentation · Suministro eléctrico · Alimentazione

				
	45 AFC 80	114 kVA*	400V - 50Hz / 460V - 60Hz	2000/14/CE modificata
	67 AFC 80	138 kVA*	400V - 50Hz / 460V - 60Hz	2000/14/CE modificata

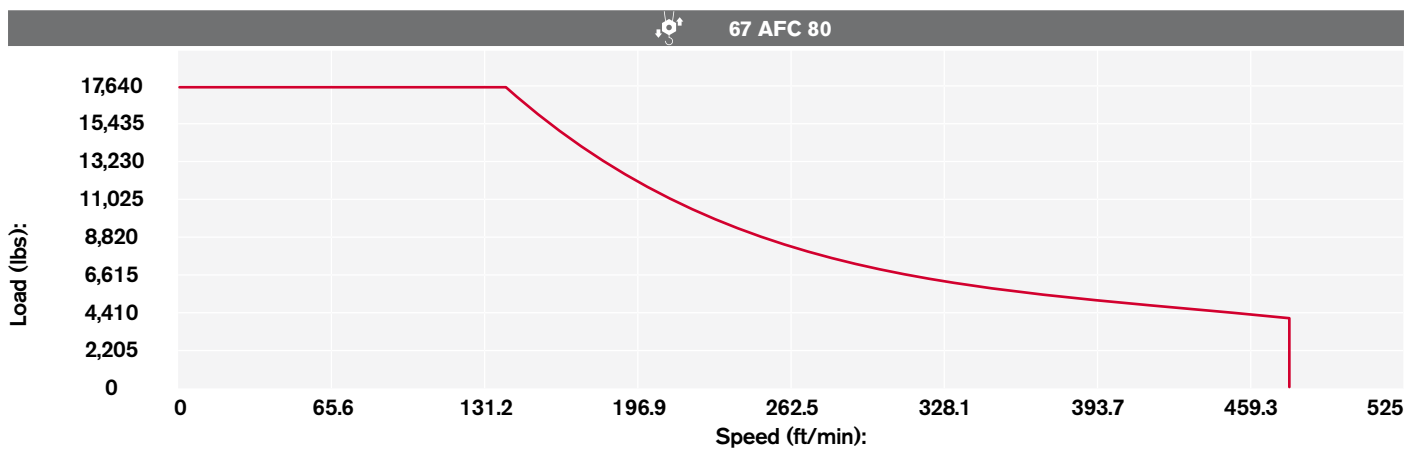
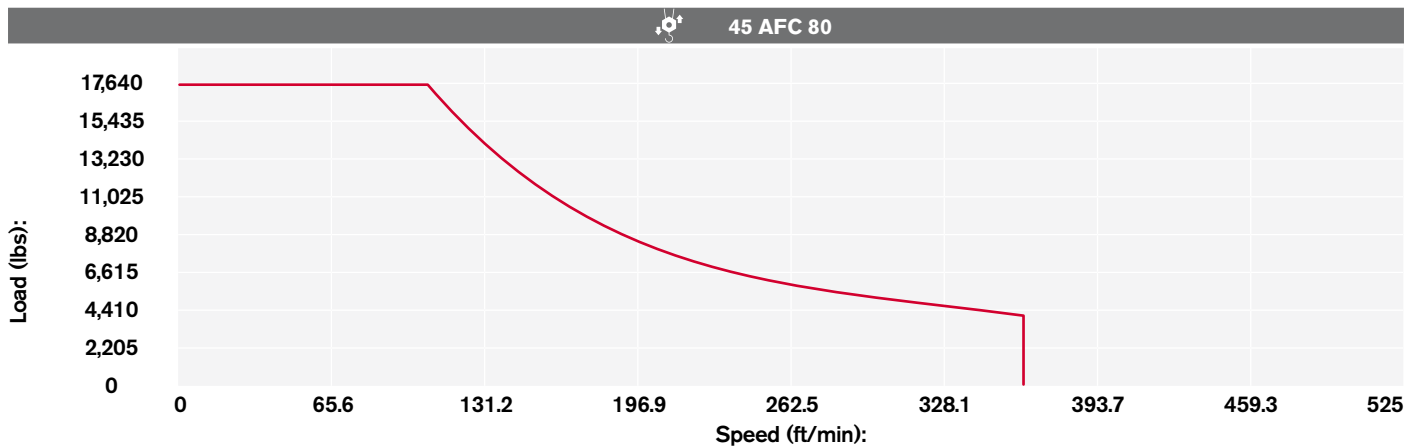
\* Crane without travelling equipment – Three movements simultaneous at 90% · Krane ohne Schienenfahren – Drei gleichzeitige Bewegungen mit 90% · Grue sans translation – Trois mouvements simultanés à 90% · Grúa sin traslación – Tres movimientos contemporáneos hechos al 90% · Gru senza traslazione – Tre movimenti contemporanei al 90%

Hoisting · Heben · Levage · Elevación · Sollevamento




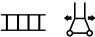


			lbs	ft/min	kW	
	45 AFC 80 45 AFC 80 D2 (Vector)		17,637	0 → 98.4	45	1,837.4 ft 2,788.9 ft (D2)
			13,228	0 → 128		
			8,818	0 → 183.7		
			4,409	0 → 318.3		
			3,748	0 → 360.9		
			35,274	0 → 49.2		
			26,455	0 → 64		
			17,637	0 → 91.9		
			8,818	0 → 159.1		
			7,496	0 → 180.5		
	67 AFC 80 67 AFC 80 D1 (Vector)		17,637	0 → 134.5	67	1,837.4 ft 2,788.9 ft (D1)
			13,228	0 → 173.9		
			8,818	0 → 249.4		
			4,409	0 → 442.9		
			4,079	0 → 475.7		
			35,274	0 → 67.3		
			26,455	0 → 86.9		
			17,637	0 → 124.7		
			8,818	0 → 221.5		
			8,157	0 → 237.9		



## Hoisting Speed · Heben Geschwindigkeit · Vitesse de Levage · Velocidad de Elevación · Velocità' di Sollevamento

















## Additional Specifications · Weitere Leistungsdaten · Spécifications additionnelles · Otras prestaciones · Altre movimentazioni






	DSR 3 70 D2	39.4 → 118.1 → 236.2 ft/min	51.6/36.9 ft·lb
	DCC 5 112 D2	0 → 311.7 ft/min	11 kW
	SSR 4 4 65	0.73 r.p.m.	4 x 47.9 ft·lb
	TSR 2RG 4M8	39.4 → 78.7 ft/min (50 Hz) 45.9 → 91.9 ft/min (60 Hz)	4 x 59 ft·lb
			

# TRANSPORTATION

Transport · Transport · Conducción · Trasporto

## Packing list

CTT 231-12 H20	DESCRIPTION · BESCHREIBUNG · DESCRIPTION · DESCRIPCIÓN · DESCRIZIONE	LENGTH · LÄNGE · LONGUEUR · LONGITUD · LUNGHEZZA	WIDTH · BREITE · LARGEUR · ANCHURA · LARGHEZZA	HEIGHT · HÖHE · HAUTEUR · ALTURA · ALTEZZA	QUANTITY · MENGE · QUANTITÉ · CANTIDAD · QUANTITÀ	WEIGHT · GEWICHT · POIDS · PESO · PESO
	6x6 m UNDERCARRIAGE LONG BEAM	29.4 ft	1.6 ft	3.4 ft	1	4,604 lbs
	6x6 m UNDERCARRIAGE SHORT BEAM	14.4 ft	1.6 ft	3.4 ft	2	2,227 lbs
	6x6 m UNDERCARRIAGE JOINING SLEEPER	18 ft	0.5 ft	1.6 ft	2	617 lbs
	6x6 m UNDERCARRIAGE JOINING SLEEPER	18 ft	0.5 ft	1.6 ft	2	485 lbs
	6x6 m UNDERCARRIAGE STRUT	16.7 ft	0.8 ft	1 ft	4	1,103 lbs
	STRUT MOUNTING TOWER ELEMENT HA20 18.8TA FOR 6x6 m UNDERCARRIAGE	24.6 ft	7.5 ft	1 ft	1	14,685 lbs*
	STRUT MOUNTING TOWER ELEMENT HA20 18.8TA FOR 6x6 m UNDERCARRIAGE	24.6 ft	6.4 ft	6.4 ft	1	13,909 lbs*
	HA20 18.10 B TOWER ELEMENT	32.8 ft	6.6 ft	6.4 ft	1	15,435 lbs*
	HA20 18.4 S TOWER ELEMENT	12.3 ft	6.6 ft	6.4 ft	1	6,516 lbs*
	COMPLETE H20 SLEWING UNIT	7.5 ft	9.7 ft	7.9 ft	1	17,640 lbs
	CAB TOWER SECTION	6.6 ft	7.5 ft	11.8 ft	1	4,631 lbs
	CAB	5.3 ft	3.6 ft	6.9 ft	1	1,411 lbs
	COUNTERJIB "C5"	39.4 ft	6.9 ft	2.3 ft	1	6,836 lbs**
	JIB SECTION-14 TT1923.12	39.3 ft	6.3 ft	8.2 ft	1	14,774 lbs 16,979 lbs***

CTT 231-12 H20	DESCRIPTION · BESCHREIBUNG · DESCRIPTION · DESCRIPCIÓN · DESCRIZIONE	LENGTH · LÄNGE · LONGUEUR · LONGITUD · LUNGHEZZA	WIDTH · BREITE · LARGEUR · ANCHURA · LARGHEZZA	HEIGHT · HÖHE · HAUTEUR · ALTURA · ALTEZZA	QUANTITY · MENGE · QUANTITÉ · CANTIDAD · QUANTITÀ	WEIGHT · GEWICHT · POIDS · PESO · PESO
	JIB SECTION-15 TT1923.10	33.5 ft	6.1 ft	8.3 ft	1	8,600 lbs
	JIB SECTION-04 TT1923.05	17.7 ft	6.1 ft	8.4 ft	1	3,969 lbs
	JIB SECTION-05 TT1923.10	33.8 ft	6.1 ft	8.4 ft	1	5,954 lbs
	JIB SECTION-06 TT1920.10	33.8 ft	6.1 ft	7.2 ft	1	4,300 lbs
	JIB SECTION-07 TT1920.05	17.3 ft	6.1 ft	7.2 ft	1	1,985 lbs
	JIB SECTION-08 TT1917.05	7.4 ft	6.1 ft	6.1 ft	1	1,764 lbs
	JIB SECTION-09 TT1917.05	17.1 ft	6.1 ft	6.1 ft	1	2,095 lbs
	JIB SECTION-10 TT1917.05	17 ft	6.1 ft	6.1 ft	1	1,147 lbs
	JIB SECTION-11 TT1917.05	16.9 ft	6.1 ft	6.1 ft	1	1,014 lbs
	JIB SECTION-12 TT1917.05	16.9 ft	6.1 ft	5.5 ft	1	838 lbs
	JIB SECTION-13 TT1917.05	16.7 ft	6.1 ft	6.1 ft	1	728 lbs
	JIB POINT	7.4 ft	7.2 ft	4.8 ft	1	485 lbs
	12-16 t JIB TROLLEY	8 ft	7.1 ft	3.8 ft	1	1,830 lbs
	16 t DOUBLE HOIST BLOCK	2 ft	3.9 ft	6.6 ft	1	1,771 lbs
	HOIST WINCH 45 AFC R00-R01 (VECTOR) (without rope)	7.5 ft	7.1 ft	5.9 ft	1	5,138 lbs
	HOIST WINCH 67 AFC R00-R01 (VECTOR) (without rope)	8.1 ft	7.3 ft	6.4 ft	1	5,513 lbs

\* including, ladders, platforms, assembly, equipment and strut mounting brackets  
 \*\* complete of platforms and protections  
 \*\*\* complete of trolley winch and various accessories

[www.terexcranes.com](http://www.terexcranes.com)

Effective Date: June 2010.

Product specifications and prices are subject to change without notice or obligation. The photographs and/or drawings in this document are for illustrative purposes only. Refer to the appropriate Operator's Manual for instructions on the proper use of this equipment. Failure to follow the appropriate Operator's Manual when using our equipment or to otherwise act irresponsibly may result in serious injury or death. The only warranty applicable to our equipment is the standard written warranty applicable to the particular product and sale and Terex makes no other warranty, express or implied. Products and services listed may be trademarks, service marks or trade-names of Terex Corporation and/or its subsidiaries in the USA and other countries. All rights are reserved. Terex® is a registered trademark of Terex Corporation in the USA and many other countries.

Gültig ab: Juni 2010.

Produktbeschreibungen und Preise können jederzeit und ohne Verpflichtung zur Ankündigung geändert werden. Die in diesem Dokument enthaltenen Fotos und/oder Zeichnungen dienen rein anschaulichen Zwecken. Anweisungen zur ordnungsgemäßen Verwendung dieser Ausrüstung entnehmen Sie bitte dem zugehörigen Betriebshandbuch. Nichtbefolgung des Betriebshandbuchs bei der Verwendung unserer Produkte oder anderweitig fahrlässiges Verhalten kann zu schwerwiegenden Verletzungen oder Tod führen. Für dieses Produkt wird ausschließlich die entsprechende, schriftlich niedergelegte Standardgarantie gewährt. Terex leistet keinerlei darüber hinaus gehende Garantie, weder ausdrücklich noch stillschweigend. Die Bezeichnungen der aufgeführten Produkte und Leistungen sind gegebenenfalls Marken, Servicemarken oder Handelsnamen der Terex Corporation und/oder ihrer Tochtergesellschaften in den USA und anderen Ländern. Alle Rechte vorbehalten. „TEREX“ ist eine eingetragene Marke der Terex Corporation in den USA und vielen anderen Ländern.

Date d'effet : Juin 2010.

Les spécifications et prix des produits sont sujets à modification sans avis ou obligation. Les photographies et/ou dessins contenus dans ce document sont uniquement pour illustration. Veuillez vous référer à la notice d'utilisation appropriée pour les instructions quant à l'utilisation correcte de cet équipement. Tout manquement au suivi de la notice d'utilisation appropriée lors de l'utilisation de notre équipement ou tout acte autrement irresponsable peut résulter en blessure corporelle sérieuse ou mortelle. La seule garantie applicable à notre équipement est la garantie standard écrite applicable à un produit et à une vente spécifique. Terex n'offre aucune autre garantie, expresse ou implicite. Les produits et services proposés peuvent être des marques de fabrique, des marques de service ou des appellations commerciales de Terex Corporation et/ou ses filiales aux Etats Unis et dans les autres pays, et tous les droits sont réservés. «TEREX» est une marque déposée de Terex Corporation aux Etats Unis et dans de nombreux autres pays.

Fecha efectiva: Junio 2010.

Los precios y las especificaciones de productos pueden sufrir cambios sin aviso previo u obligación. Las fotografías o dibujos de este documento tienen un fin meramente ilustrativo. Consulte el manual de instrucciones del operador correspondiente para más información sobre el uso correcto de este equipo. El hecho de no respetar el manual del operador correspondiente al utilizar el equipo o actuar de forma irresponsable puede suponer lesiones graves o fatales. La única garantía aplicable a nuestro equipo es la garantía escrita estándar correspondiente a cada producto y venta, y TEREX no amplía dicha garantía de forma expresa o implícita. Los productos y servicios mencionados pueden ser marcas registradas, marcas de servicio o nombres de marca de TEREX Corporation o de sus filiales en Estados Unidos de América y otros países, y se reservan todos los derechos. „TEREX“ es una marca comercial registrada de Terex Corporation en Estados Unidos de América y muchos otros países.

Data di inizio validità: Giugno 2010.

Ci riserviamo il diritto di modificare le specifiche e i prezzi dei prodotti in ogni momento e senza preavviso. Le fotografie e/o i disegni contenuti in questo documento sono destinati unicamente a scopi illustrativi. Consultare le istruzioni sull'uso corretto di questo macchinario, contenute nell'opportuno Manuale dell'operatore. L'inottemperanza delle istruzioni contenute nel Manuale dell'operatore del macchinario e altri comportamenti irresponsabili possono provocare gravi lesioni, anche mortali. L'unica garanzia applicabile ai nostri macchinari è la garanzia scritta standard applicabile al particolare prodotto e alla particolare vendita; Terex è esonerata dal fornire qualsiasi altra garanzia, esplicita o implicita. I prodotti e servizi elencati possono essere dei marchi di fabbrica, marchi di servizio o nomi commerciali di TEREX Corporation e/o società affiliate negli Stati Uniti d'America e altre nazioni e tutti i diritti sono riservati. „TEREX“ è un marchio registrato di Terex Corporation negli USA e molti altri Paesi.

Copyright 2010 Terex Corporation

Terex Cranes, Global Marketing, Dinglerstraße 24, 66482 Zweibrücken, Germany  
Tel. +49 (0) 6332 830, Email: [info.cranes@terex.com](mailto:info.cranes@terex.com), [www.terexcranes.com](http://www.terexcranes.com)

Brochure Reference: TC-DS-IMP-E/F/G/I/S-CTT331-16 H20-06/10



**WORKS FOR YOU.™**