

LIEBHERR

Weights.

Axle loads (lbs). Crane in travel position.

Axle	1	2	3	4	5	6	Total weight
lbs	26500	26500	26500	26500	26500	26500	159000

Hook blocks and hooks.

Load (kips)	No. of sheaves	No. of lines	Weight lbs
276	7	14	2866
221	5	10	2646
143	3	7	2006
66	1	3	1146
22	-	1	573

Working speeds.

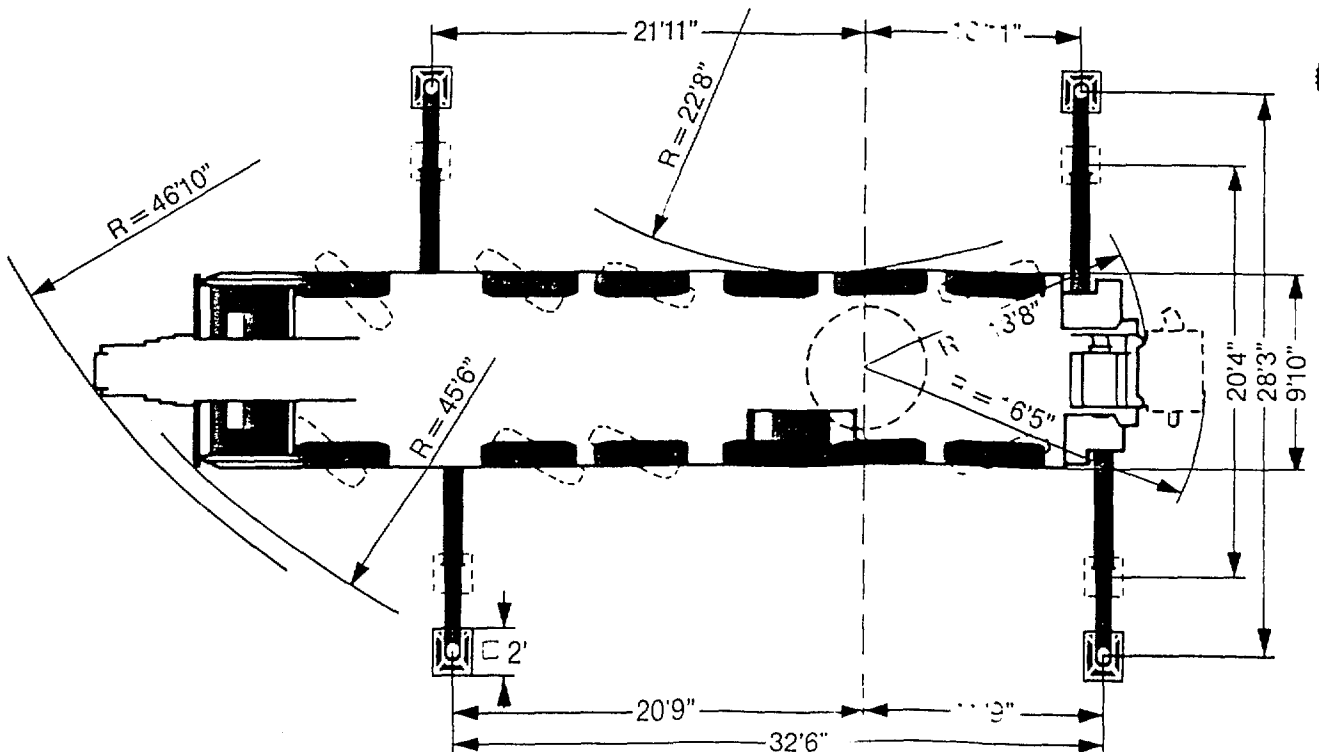
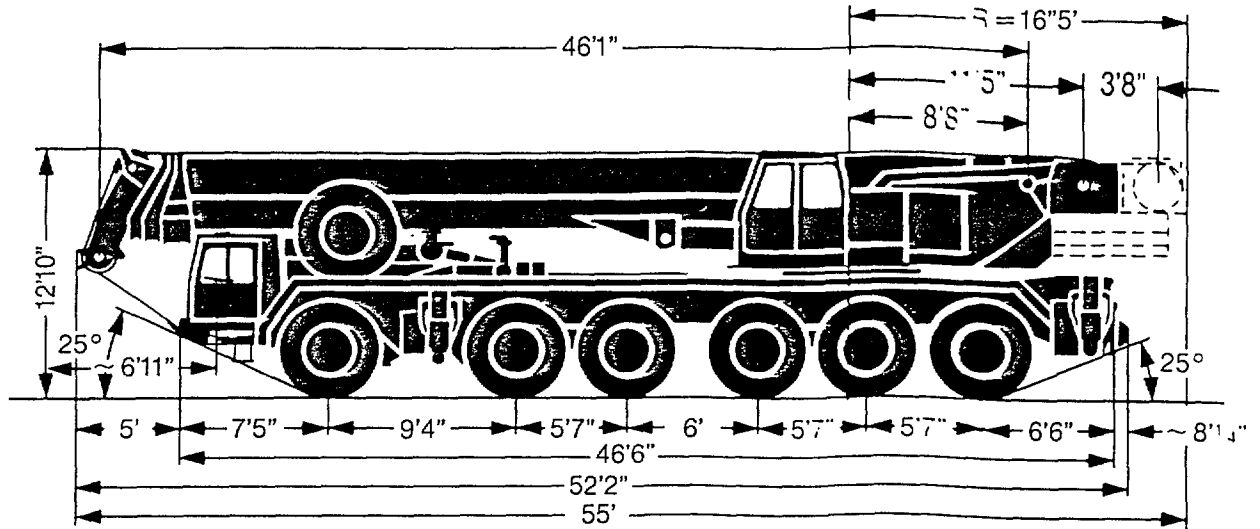
Travel speeds in mph at max. engine speed of 2200 rpm.

Gear	1	2	3	4	5	R
On road (mph)	8	13	20.5	30.4	39.8	4.3
Off road (mph)	4.7	7.5	11.8	17.4	23.9	2.5
Max. gradient approx.	45 %					
Tyres	16.00 R 25					

Speeds of crane movements at max. engine speed of 2000 rpm.

Drive	infinitely variable	Rope diameter / Rope length	Max. single line pull
Main winch	0 - 477 ft/min single line	$2\frac{9}{32}$ " / 820'	22500 lbs
Auxiliary winch	0 - 197 ft/min single line	$2\frac{9}{32}$ " / 820'	22500 lbs
Slewing gear	0 - 1.6 rpm		
Luffing	approx. 90 seconds to reach 83° boom angle		
Telescoping	approx. 170 seconds for boom extension from 46 ft - 148 ft		

Dimensions.



Lifting capacities at telescopic boom.

Telescopic boom: 46 ft - 148 ft. On outriggers, 360°. Counterweight: 57000 lbs.

Radius ft	46 ft	63 ft	77 ft	94 ft	108 ft	125 ft	139 ft	148 ft	Radius ft				
10	400	307	252						10				
11	309	293	246						11				
12	294	283	239						12				
13	284	276	232						13				
14	270	265	223	188					14				
15	257	253	215	182					15				
16	245	242	209	176					16				
17	234	233	203	171					17				
18	224	223	197	167	139	90			18				
20	204	204	184	157	133	84	110		20				
22	185	185	174	146	127	79.5	107		22				
24	168	168	163	137	121	75.5	104	87	24				
26	152	152	149	129	115	72	102	85	26				
28	139	139	137	123	110	68.5	98	83	72	67	60	28	
30	128	128	126	117	105	65.5	94	81	70	66	59.3	30	
32	118	118	116	111	101	63	90	78.5	67	65	58.5	32	
34			108	104	96.5	60.5	86	76	65	64	57.5	34	
36			99.5	96	92	57.8	83	74	63	62	56.4	36	
38			91.5	89	88	55.3	79.5	72	60.5	60.5	55.2	38	
40			84	82	83	53	76	70	58.8	58.9	54	40	
45			68.5	67.5	69	48.3	68.5	65.5	54.4	55.5	50.3	45	
50			57.2	56.3	57.9	44	58.9	59	50.4	52.3	47	50	
55				47.3	49.1	40.3	50	52	46.7	48.9	44	55	
60				39.9	41.8	37.2	42.7	44.7	43.4	45.1	41.2	60	
65				33.8	35.6	34.5	36.7	38.9	40.7	40.1	38.7	65	
70					30.7	32.3	31.8	34	36.4	35.3	35	70	
75					26.4	30.4	27.5	29.8	32.3	31.2	31.2	75	
80					22.6	28.7	23.6	26.1	28.7	27.6	27.6	80	
85					19.4	27.2	20.3	22.7	25.6	24.2	24.2	85	
90							17.5	20	22.7	21.5	21.5	90	
95							15.2	17.5	20.2	19	19	95	
100								15.2	18.1	16.8	16.8	100	
105								13.2	16.1	14.8	14.8	105	
110								11.5	14.4	13.1	13.1	110	
115										11.5	11.5	115	
120										10.1	10.1	120	
125											8.7	125	
130											7.6	130	
Telesc.	I	0	50	92	92	0	92	92	50	92	100	I	Telesc.
	II	0	0	0	50	50	92	92	92	92	100	II	
%	III	0	0	0	0	92	0	50	92	92	100	III	%

" over rear

TAB 74122

Remarks referring to load charts.

1. The tabulated lifting capacities do not exceed 85 % of the tipping load.
2. The crane's structural steelwork is in accordance with DIN 15018, part 3. Design and construction of the crane comply with DIN 15018, part 2, and which F. E. M. regulations.
3. The 85 % overturning limit values take into account wind force 5 = wind speed 20 mph.
4. Lifting capacities are given in kips.
5. The weight of the hook blocks and hooks must be deducted from the lifting capacities.
6. Working radii are measured from the slewing centreline.
7. The lifting capacities given for the telescopic boom only apply if the folding jib is taken off.
8. Lifting capacities are subject to modifications.

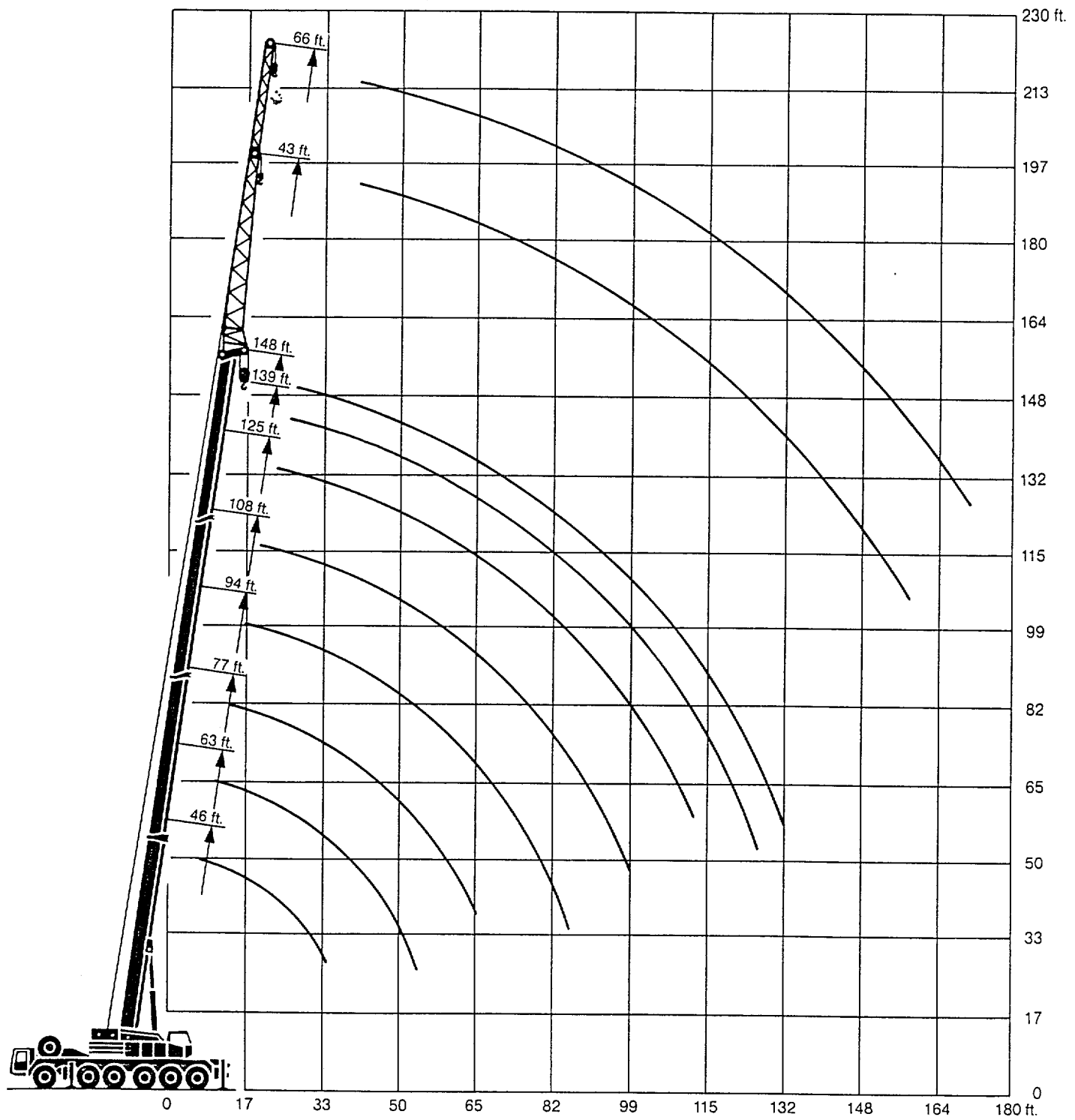
Lifting capacities are given in kips (1,000 lbs).

Telescopic boom: 46 ft - 148 ft. On outriggers, 360°. Counterweight: 42000 lbs.

Radius ft	46 ft	63 ft	77 ft	94 ft		108 ft	125 ft		139 ft	148 ft	Radius ft		
10	307	252									10		
11	293	246									11		
12	283	239									12		
13	276	232									13		
14	265	223	188								14		
15	253	215	181								15		
16	242	209	173								16		
17	232	203	168								17		
18	221	197	164	139	90						18		
20	200	183	157	133	84	110					20		
22	180	171	146	127	79.5	107					22		
24	162	158	137	121	75.5	104	87	76			24		
26	147	143	129	115	72	99.5	85	73			26		
28	135	131	122	110	68.5	95.5	83	71	67	58.9	28		
30	123	118	114	105	65.5	92	81	69	66	58.3	30		
32	111	106	104	101	63	88.5	78.5	66.5	64.5	57.6	32		
34		96.5	94	94.5	60.5	85	76	64	63	56.6	34		
36		88	86	87	57.8	81	74	62	61.5	55.4	36		
38		79.5	77.5	79	55.3	77.5	72	59.9	59.8	54.2	38		
40		72	70	72	53	73.5	69.5	57.9	58.2	52.9	40		
45		58.2	56.9	58.7	48.3	59.8	61.5	53.5	54.7	49.2	45		
50		48	46.8	48.7	44	49.7	52.1	49.6	50.9	45.8	50		
55			38.5	40.5	40.3	41.4	43.8	45	45.3	42.4	55		
60			31.6	33.6	37.2	34.5	36.9	39.8	38.5	38.6	60		
65			26	28	34.3	29.1	31.5	34.4	33.1	33.1	65		
70				23.5	31.6	24.5	27	29.9	28.6	28.6	70		
75				19.6	28.4	20.5	23.1	26	24.7	24.7	75		
80				16.3	25.1	17.2	19.6	22.7	21.3	21.3	80		
85				13.4	22.4	14.5	16.7	19.8	18.3	18.3	85		
90						12.1	14.3	17.3	15.9	15.9	90		
95						10.1	12.2	15.1	13.7	13.7	95		
100							10.3	13.1	11.8	11.8	100		
105							8.6	11.2	10.1	10.1	105		
110							7.3	9.9	8.6	8.6	110		
115								7.2	7.4	7.4	115		
120								6	6.2	6.2	120		
125								5	5	5	125		
130									4	4	130		
Telesc.	I	0	50	92	92	0	92	92	50	92	100	I	Telesc.
	II	0	0	0	50	50	92	92	92	92	100	II	
%	III	0	0	0	0	92	0	50	92	92	100	III	%

TAB 74042

Lifting heights.



Lifting capacities at the folding jib.

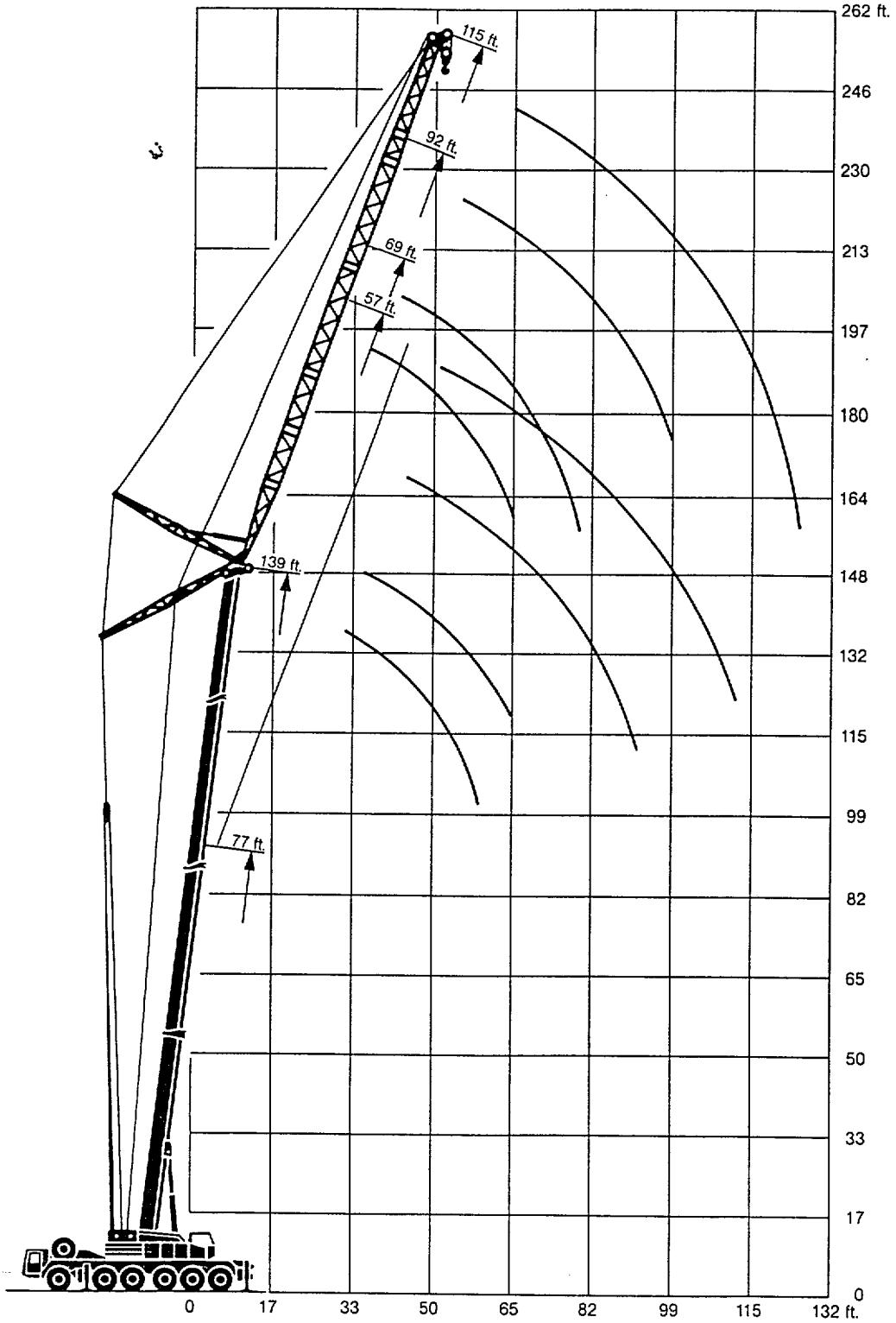
Telescopic boom: 94 ft – 148 ft. Folding jib: 43 ft – 66 ft. On outriggers, 360°. Counterweight: 42000 lbs.

Radius ft	Telescopic boom														Radius ft		
	125 ft		139 ft				148 ft		94 ft		139 ft					148 ft	
	43 ft		Folding jib 43 ft		43 ft		66 ft		Folding jib 66 ft		66 ft		66 ft				
	0°	20°	0°	20°	0°	20°	0°	20°	0°	20°	0°	20°	0°	20°			
30									28.9						30		
32									28.1						32		
34	41.6								27.4						34		
36	41.4								26.8						36		
38	41.1								26.2						38		
40	40.8		32.1		28.8			25.6		21.8		19.8		17.8	40		
45	39.5		31.1		27.8			23.9		21.3		19.7		17.7	45		
50	37.5	23.2	29.6		26.3			21.5		20.6		19.5		17.5	50		
55	35.3	22.2	28	19.1	24.7	13.7		19.4	14.3	20		19.3		17.2	55		
60	33.2	21.2	26.2	18.4	23.1	12.9		17.9	13.8	19.2	13.4	19		16.6	60		
65	31.3	20	24.7	17.5	21.6	12.4		16.7	13.1	18	12.9	17.8		15.6	65		
70	28.9	19	23.2	16.8	20.1	11.9		15.5	12.6	17	12.3	16.8	11.8	14.7	70		
75	25.8	18	21.7	16.1	18.7	11.4		14.5	12.1	16	11.9	15.8	11.5	13.9	75		
80	22.4	17	20.4	15.3	17.6	10.9		13.6	11.5	15	11.6	14.8	11.1	13.1	80		
85	19.4	16.1	19.3	14.6	16.6	10.4		12.6	10.8	14.2	11.3	14.2	10.6	12.4	85		
90	17	15.3	17.3	14.1	15.6	10.1		11.9	10.3	13.3	10.8	13.3	10.4	11.9	90		
95	14.8	14.5	15.3	13.5	14.5	9.6		11.3	9.8	12.6	10.4	12.7	10.2	11.3	95		
100	12.9	13.6	13.3	12.9	13.1	9.2		10.6	9.4	12	10	12.2	9.8	10.6	100		
105	11	12.8	11.5	12.3	11.2	8.8		10.1	9	11.5	9.7	11.7	9.5	10.1	105		
110	9.5	11.6	10	11.8	9.7	8.3		9.6	8.7	10.8	9.4	11	9.3	9.8	110		
115	8.1	10.2	8.6	10.9	8.3	7.9		9.1	8.3	10.4	9	10.1	9	9.4	115		
120	6.8	8.8	7.3	9.6	7.1	7.6		8.6	7.8	10	8.6	9	8.6	8.7	120		
125	5.7	7.4	6.1	8.3	5.9	7.2		8.1	7.5	9.4	8.2	7.9	8.2	7.6	125		
130	4.7	6.2	5.1	7.1	4.9	6.7		7.8	7.3	8.4	8	6.9	8	6.5	130		
135	3.8	5.2	4.2	6.1	4	5.9		7.5	7	7.4	7.8	5.9	7.7	5.5	135		
140	2.9	4.2	3.4	5.1	3.2	4.9		7.1	6.7	6.5	7.6	4.9	7.1	4.7	140		
145			2.6	4.1		3.9				5.6	7.2	4.1	6	3.9	145		
150			1.9	3.2		3				4.8	6.3	3.2	5	3	150		
155										4.1	5.5	2.5	4.2	2.3	155		
160										3.5	4.7		3.4		160		
165										3	3.8				165		
170										2.3	3.2				170		

TAB 74043/74139

Lifting heights.

Luffing lattice jib.



Lifting capacities at the luffing lattice jib.

Telescopic boom: 77 ft – 139 ft. Luffing lattice jib: 57 ft – 115 ft. On outriggers, 360°. Counterweight: 42000 lbs.

Radius ft	Telescopic boom								Radius ft	
	77 ft				108 ft					
	Luffing jib				Luffing jib					
	57 ft	69 ft	92 ft	115 ft	57 ft	69 ft	92 ft	115 ft		
30	73								30	
32	73								32	
34	73					38.8			34	
36	73					38.8			36	
38	73	63				38.8			38	
40	73	63				38.8	32.9		40	
42	73	63				38.8	32.9		42	
44	70	63	46.1			38.8	32.9		44	
46	66	63	46.1			38.8	32.9		46	
48	62.5	63	46.1			38.8	32.9		48	
50	59.2	62	46.1			38.8	32.9	23.2	50	
52	55.6	58.9	46.1			38.8	32.9	23.2	52	
54	52.1	56	46.1	31.5		38.8	32.9	23.2	54	
56	48.8	53	46.1	31.5		38.8	32.9	23.2	56	
58	45.4	50.1	46.1	31.5		38.8	32.9	23.2	58	
60		47.1	45.7	31.5			32.9	23.2	14.6	60
65		39.7	43.9	31.5			32.9	23.2	14.6	65
70			40.1	31.5			32.9	23.2	14.6	70
75			36.2	31.5				23.2	14.6	75
80			32.3	31.5				23.2	14.6	80
85			28.5	31.5				23.2	14.6	85
90			24.6	29.3				23.2	14.6	90
95				27.1					14.6	95
100				24.8					14.6	100
105				22.5					14.6	105
110				20.1					14.6	110
115									14.6	115
120										120

Telescopic boom: 77 ft – 139 ft. Luffing lattice jib: 57 ft – 115 ft. On outriggers, 360°. Counterweight: 42000 lbs.

Radius ft	Telescopic boom								Radius ft	
	125 ft				139 ft					
	Luffing jib				Luffing jib					
	57 ft	69 ft	92 ft	115 ft	57 ft	69 ft	92 ft	115 ft		
38	28								38	
40	28					19.4			40	
42	28					19.4			42	
44	28	23.6				19.4			44	
46	28	23.6				19.4	16.5		46	
48	28	23.6				19.4	16.5		48	
50	28	23.6	16.5			19.4	16.5		50	
52	28	23.6	16.5			19.4	16.5		52	
54	28	23.6	16.5			19.4	16.5		54	
56	28	23.6	16.5			19.4	16.5		56	
58	28	23.6	16.5			19.4	16.5		58	
60	28	23.6	16.5	9.7		19.4	16.5	11.2	60	
65	28	23.6	16.5	9.7		19.4	16.5	11.2	65	
70		23.6	16.5	9.7			16.5	11.2	6.2	70
75			16.5	9.7			16.5	11.2	6.2	75
80			16.5	9.7				11.2	6.2	80
85			16.5	9.7				11.2	6.2	85
90			16.5	9.7				11.2	6.2	90
95			16.5	9.7				11.2	6.2	95
100				9.7					6.2	100
105				9.7					6.2	105
110				9.7					6.2	110
115				9.7					6.2	115
120									6.2	120