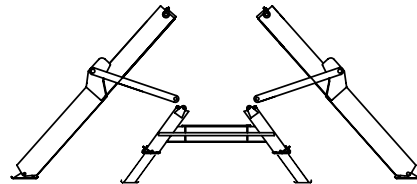
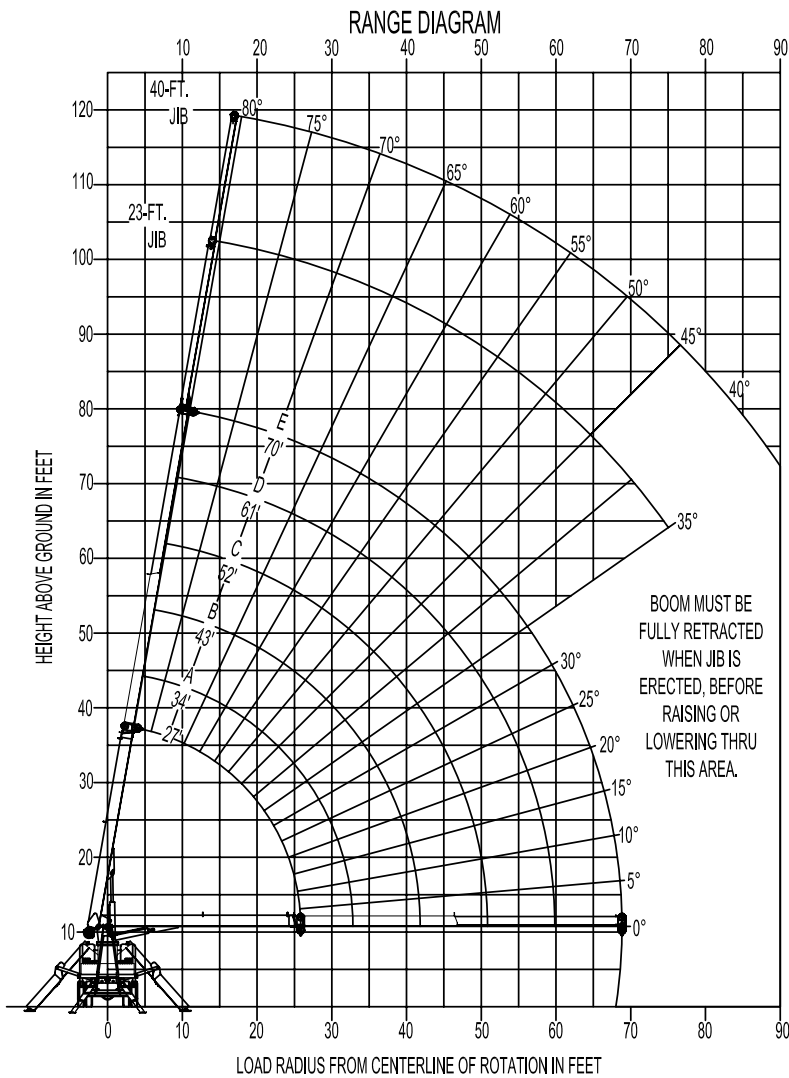


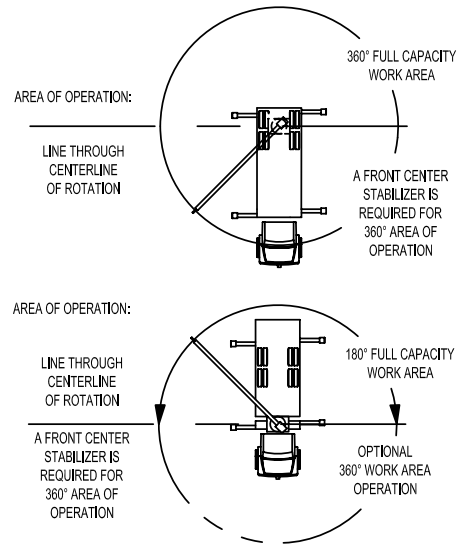
MODEL 1870 RANGE SPECIFICATIONS



OUTRIGGERS AT FULL EXTENSION

NOTE:

1. Operate jib by radius when main boom is full extended. Increase boom angle if necessary to maintain load radius.
2. When boom is retracted, operate jib by boom angles. Do not exceed any rated jib capacities at reduced boom lengths.
3. Capacities do not exceed 85% stability.
4. Load ratings above bold line are structurally limited.
5. Personnel handling is allowed only with full span outriggers.
6. Boom load ratings are based on loaded boom radius. Loaded boom angles are given as reference only.



CRANE MEETS ASME B30.5 REQUIREMENTS AT TIME OF MANUFACTURE

DO NOT PAINT OVER ANY LABELS 1080270 043004

MODEL 1870 LOAD SPECIFICATIONS

MAIN BOOM LOAD RATINGS WITH FULLY EXTENDED OUTRIGGERS

MAIN BOOM LOAD RATINGS												JIB LOAD RATINGS								
LOAD RATINGS IN LBS. WITH OUTRIGGERS AND STABILIZERS EXTENDED												LOAD RATINGS IN LBS. WITH OUTRIGGERS AND STABILIZERS EXTENDED								
LOAD RADIUS IN FEET	LOADED BOOM ANGLE	27-FT	LOADED BOOM ANGLE	34-FT	LOADED BOOM ANGLE	A	LOADED BOOM ANGLE	B	LOADED BOOM ANGLE	C	LOADED BOOM ANGLE	D	LOADED BOOM ANGLE	E	23-FT FIXED LENGTH JIB		23-40 FT EXTENDABLE JIB			
															23-FT JIB	LOADED BOOM ANGLE	23-FT JIB RETRACTED	LOADED BOOM ANGLE	40-FT JIB EXTENDED	
5	79	36000																		
10	68	21300	73	19500	77	16500	80	15000							80	4600	80	4500	80	2600
15	56	15200	64	14500	70	13500	75	12000	78	10500	80	9600			75	3700	75	3600	75	2000
20	41	11500	54	11100	63	10000	69	9000	73	8000	76	7300			70	3000	70	2900	70	1900
25	19	8600	43	8500	55	8000	62	7200	68	6500	71	5800			65	2400	65	2300	65	1800
30			27	6750	47	6400	56	5900	63	5400	67	4900			60	2000	60	1900	60	1300
35					36	5000	49	4700	56	4400	62	4200			55	1600	55	1500	55	900
40					20	4200	41	4100	50	3900	56	3700			50	1400	50	1300	50	800
45							30	3500	43	3400	51	3200			45	1100	45	1000	45	600
50							14	2800	36	2800	45	2700			40	900	40	800		
55									26	2400	39	2300			35	700	35	600		
60											32	1900								
65											22	1550								
	0	6000	0	4200	0	3000	0	1900	0	1300	0	1000								
		340		270		210		170		150		130			DEDUCTIONS FOR STOWED FIXED LENGTH JIB					
		530		420		330		270		230		200			DEDUCTIONS FOR STOWED EXTENDABLE JIB					

NOTICE

- DO NOT DEADHEAD LINE BLOCK AGAINST BOOM TIP WHEN EXTENDING BOOM

- KEEP AT LEAST 5 WRAPS OF LOADLINE ON THE WINCH DRUM AT ALL TIMES

- USE ONLY 9/16" DIAMETER WIRE ROPE, AS SPECIFIED BELOW, WITH THE PROPER BREAKING STRENGTHS LISTED

- ANTI-TWO-BLOCK SYSTEM MUST BE IN GOOD OPERATING CONDITION BEFORE OPERATING CRANE. SEE OPERATION & SAFETY MANUAL

1-PART LINE



2-PART LINE



3-PART LINE



4-PART LINE



ELLIOTT EQUIPMENT CO. SUPPLIED
 LOADLINE EQUIPMENT DEDUCTIONS:
 DOWNHAUL WEIGHT180 lbs
 ONE SHEAVE BLOCK.....375 lbs
 TWO SHEAVE BLOCK.....640 lbs

MAX PULL:	9,600 lbs	19,200 lbs	28,800 lbs	36,000 lbs	9/16" - 6 x 37 IWRC (3.5:1 S.F.) 33,600-lbs. BREAKING STRENGTH
MAX PULL:	9,060 lbs	18,120 lbs	27,180 lbs	36,000 lbs	9/16" - SPIN RESISTANT (5:1 S.F.) 45,300-lbs. BREAKING STRENGTH
MAX PULL:	7,680 lbs	15,360 lbs	23,040 lbs	30,720 lbs	9/16" - SPIN RESISTANT (5:1 S.F.) 38,400-lbs. BREAKING STRENGTH

CRANE MEETS ASME B30.5 REQUIREMENTS AT TIME OF MANUFACTURE

DO NOT PAINT OVER ANY LABELS 1080270 043004