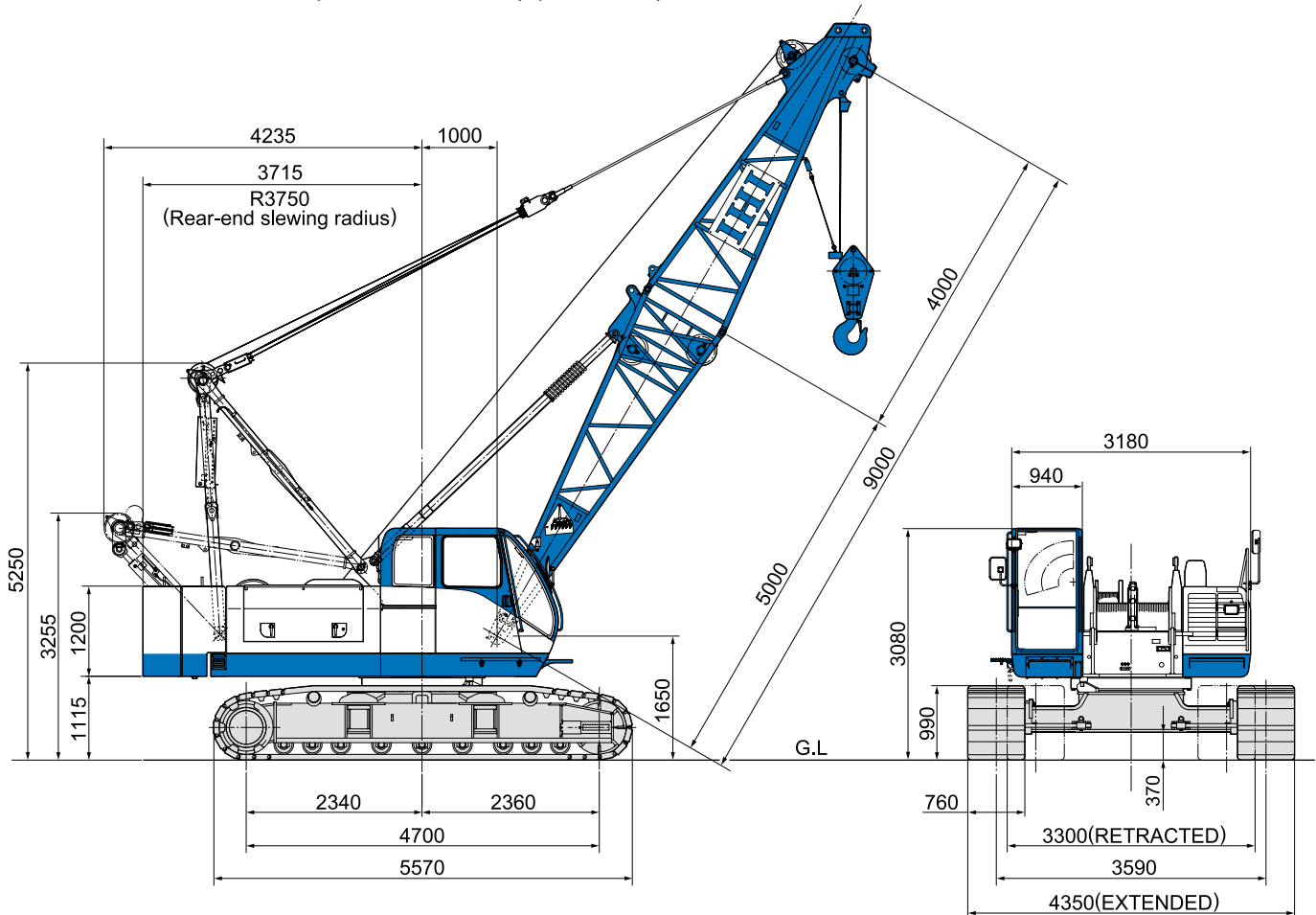


# CCH500EX

Max. Lifting Capacity : 50t  
 Max. Boom Length : 51m  
 Max. Jib Combination : 42m + 15m

## ■ General dimensions (with basic boom) (Unit : mm)



## ■ Main specifications

Performance	
Slewing speed	3.5 rpm
Travel speed	1.6 km/hr
Gradeability	40% (21.8°)
Engine	
Make	Cummins Inc.
Model	QSB6.7
Type	4-cycle, water-cooled, turbocharged and air cooled
Total displacement	6.7 L
Rated output	149 kW / 2,100 min <sup>-1</sup> (200 HP / 2,100 rpm)
Fuel tank capacity	240 L
Battery	12 V × 120 AH × 2 pcs.
Load hoist system (Main & Aux.)	
Hydraulic motor	Axial piston type
Reduction gear	One-stage planetary gear and single stage spur gear
Hoist drum	2-grooved cylindrical drums on individual shafts mounted inline with lebus type groove
Clutch	Internal expanding band type
Brake	External contracting band type
Drum lock	Ratchet type
Boom hoist system	
Hydraulic motor	Axial piston type
Reduction gear	Two-stage planetary gear
Hoist drum	Grooved cylindrical single drum on shaft, with lebus type groove
Brake	Wet type multi disc
Drum lock	Ratchet type

## ■ Crane specifications

Max. lifting capacity (metric ton) × working radius (m)	50 × 3.7	
Max. main boom length (m)	51	
Max. boom length with jib (main+jib) (m)	57 (42 + 15)	
Rope speed	Main hoisting/lowering (m/min)	*High 110 / 80 : Lo 55 / 40
	Auxiliary hoisting/lowering (m/min)	*High 110 / 80 : Lo 55 / 40
	Boom hoisting/lowering (m/min)	*60
Part lines	50 ton hook block	8 part lines
	15 ton hook block	3 part lines
	Boom hoisting/lowering	12 part lines
Standard counterweight (ton)	17.7	
Total operating weight (with 9 m boom) (ton)	Approx. 51.4	
Average ground bearing pressure (kPa) [kg/cm <sup>2</sup> ]	(66) [0.67]	

Note1 : The value marked with "\*" may change depending on the loads given.

## Standard equipment

### 1. Base Machine

- Counterweight (17.7 ton)
- Counterweight removal system
- Engine tachometer
- Engine diagnostics (with idle speed control)
- Hydraulic pressure gauge
- Fuel gauge
- Engine coolant temperature gauge
- Front work lamp (on both sides)
- Operator's room lamp
- Air conditioner
- Front windshield wiper
- Bronze tinted glass
- Ceiling wiper
- Sun shade
- Reclining operator's seat
- Sun-visor
- Cigarette lighter
- Rear view mirrors (on both sides)
- Radio
- Ashtray
- Storage pouch
- Electric fuel pump
- Swing flashing light
- Travel warning Buzzer
- Swing warning Buzzer
- Electrical engine throttle control grip
- Engine throttle pedal
- Ultra low speed control
- Winch mode selector (main and aux.)
- Automatic brake system
- Hydraulic assist brake (main and aux.)
- Rope guide roller on boom back (for outer boom)
- Foot rest
- Floor mat
- Steps for operator's cab
- Plug socket (24V)
- Standard tools for maintenance (details are as per Parts Catalogue)

## Options

### 1. Base Machine

- Tagline
- Drum rotation indicator
- Fire extinguisher
- Combustion type heater
- Electric fan
- Spark arrestor
- Operator gate lock lever
- 3rd Drum ( $\phi$ 16mm or  $\phi$ 18mm wire rope, with free fall)
- Name plate (both sides of base machine)

### 2. Light and Instrument

- Yellow rotary light
- Boom point clearance lamp
- Over load outside alarm light (red/yellow/green)
- Work light on boom
- Work light for rear direction
- Level indicator
- Anemometer

### 3. Step and guard

- Wire mesh for boom walkway

### 4. Attachment

- 3 m, 6 m, 9 m insert boom (with pendant rope and rope guide roller)
- 6 m basic jib and accessories
- 3m, 6m insert jib (with pendant rope)
- 1m auxiliary jib and accessories
- 35 ton hook block (three sheaves)
- 15 ton hook block (one sheave)
- 5.8ton hook block
- 10 ton hook block (for assembly and disassembly)
- Auxiliary hoisting wire rope
- Name plate (both sides of outer boom)

### 5. Others

- Large size tool box (with caster)
- Sling wire rope (for lifting counter weight or crawler)

## Combination of main boom and jib boom

Boom length(m) \ Jib length(m)	9	12	15	18	21	24	27	30	33	36	39	42	45	48	51
Aux.	●	●	●	●	●	●	●	●	●	●	●	●	●	●	●
6	●	●	●	●	●	●	●	●	●	●	●	●	●	●	●
9	●	●	●	●	●	●	●	●	●	●	●	●	●	●	●
12	●	●	●	●	●	●	●	●	●	●	●	●	●	●	●
15	●	●	●	●	●	●	●	●	●	●	●	●	●	●	●

●:Applicable combination

## Wire rope

Purpose	Rope dia. (mm)	Breaking Strength (kN)	Rope Type (Std.length)
Main hoisting	$\phi$ 22.4	440	P•S(19)+39×P•7(210m)
Boom hoisting	$\phi$ 16	214	IWRC 6×P•WS(31)(126m)
Boom suspension	$\phi$ 31.5	734	IWRC 6×Fi(29)
Auxiliary hoisting	$\phi$ 22.4	440	P•S(19)+39×P•7(130m)
Jib suspension	$\phi$ 26	489	IWRC 6×Fi(29)
Jib strut suspension	$\phi$ 26	489	IWRC 6×Fi(29)

Note:Designed and rated in compliance with ANSI Code B30.5-1.7.1

## Boom composition

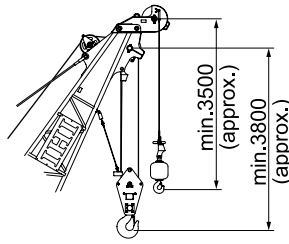
Boom length (m)	9	12	15	18	21	24	27	30	33
5 m Inner	1	1	1	1	1	1	1	1	1
3 m Insert	—	1	2	1	2	1	1	2	2
6 m Insert	—	—	—	1	1	2	1	1	—
9 m Insert	—	—	—	—	—	—	1	1	2
4 m Outer	1	1	1	1	1	1	1	1	1

Boom length (m)	36	39	42	45	48	51
5 m Inner	1	1	1	1	1	1
3 m Insert	1	2	2	1	2	2
6 m Insert	1	1	—	1	1	—
9 m Insert	2	2	3	3	3	4
4 m Outer	1	1	1	1	1	1

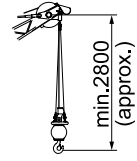
## Jib boom composition

Jib length (m)	6	9	12	15
3 m Inner	1	1	1	1
3 m Insert	—	1	2	1
6 m Insert	—	—	—	1
3m Outer	1	1	1	1

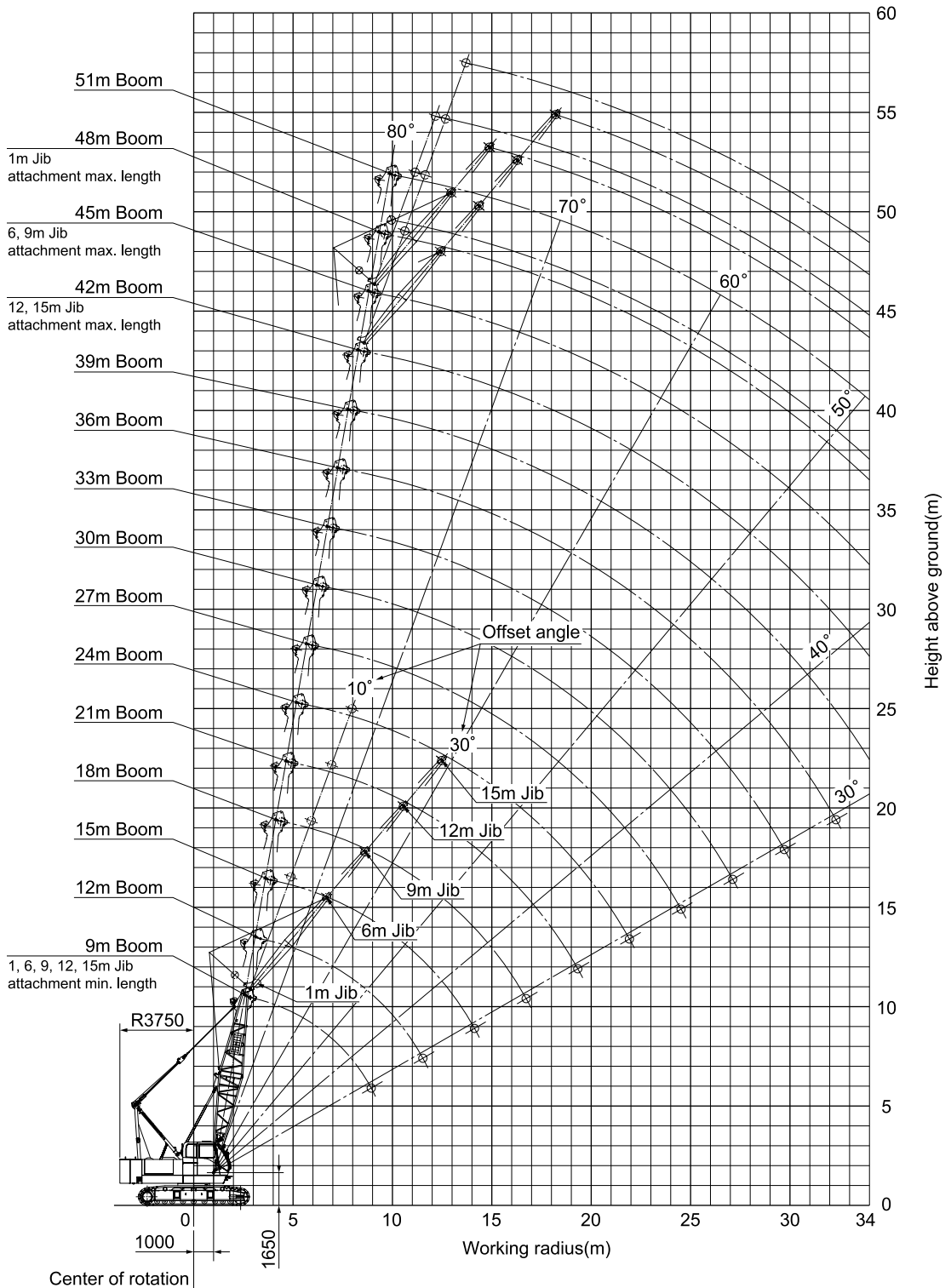
## Working range (No loaded condition)



Main boom + Auxiliary jib



Auxiliary jib



## ■ Main boom rated lifting loads (with 17.7 ton counterweight)

Unit: metric ton

Boom length(m) Working radius(m)	9.0	12.0	15.0	18.0	21.0	24.0	27.0	30.0	33.0	36.0	39.0	42.0	45.0	48.0	51.0
3.7	50.0	50.0	3.9m× 47.9												
4.0	49.0	48.9	47.0	4.4m× 41.6											
4.5	40.4	40.3	40.2	40.1											
5.0	33.9	33.8	33.7	33.6	33.5	5.5m× 28.7	5.9m× 25.6								
6.0	25.6	25.5	25.4	25.3	25.2	25.1	25.0	6.5m× 22.0							
7.0	20.5	20.4	20.3	20.2	20.1	20.0	19.9	19.8	19.7	7.6m× 17.0					
8.0	17.1	17.0	16.9	16.8	16.7	16.6	16.5	16.4	16.3	16.2	8.1m× 15.8	8.6m× 14.4			
9.0	8.9m× 14.8	14.5	14.4	14.3	14.2	14.1	14.0	13.9	13.8	13.7	13.6	13.5	9.1m× 13.1	9.8m× 11.4	
10.0		12.6	12.5	12.4	12.3	12.2	12.1	12.0	11.9	11.8	11.7	11.6	11.5	11.2	10.3m× 8.5
12.0		11.5m× 10.5	9.9	9.8	9.7	9.6	9.5	9.4	9.3	9.2	9.1	9.0	8.9	8.8	8.5
14.0			8.1	8.0	7.9	7.8	7.7	7.6	7.5	7.4	7.3	7.2	7.1	7.0	6.9
16.0			14.1m× 8.0	6.7	6.6	6.5	6.4	6.3	6.2	6.1	6.0	5.9	5.8	5.7	5.6
18.0				16.7m× 6.3	5.7	5.6	5.5	5.4	5.3	5.2	5.1	5.0	4.9	4.8	4.7
20.0					19.3m× 5.2	4.9	4.8	4.7	4.6	4.5	4.4	4.3	4.2	4.1	4.0
22.0						21.9m× 4.3	4.2	4.1	4.0	3.9	3.8	3.7	3.6	3.5	3.4
24.0							3.7	3.6	3.5	3.4	3.3	3.2	3.1	3.0	2.9
26.0								24.5m× 3.5	3.1	3.0	2.9	2.8	2.7	2.6	2.5
28.0									27.0m× 2.9	2.7	2.6	2.5	2.4	2.3	2.2
30.0										29.7m× 2.3	2.3	2.2	2.1	2.0	1.9
32.0											2.0	1.9	1.8	1.7	1.6
34.0											32.3m× 1.9	1.6	1.5	1.4	1.3
No. of part line	8	8	8	7	6	5	4	4	4	3	3	3	3	2	2

## ■ 1 m jib rated lifting loads (with 17.7 ton counterweight)

Unit: metric ton

Boom length(m) Working radius(m)	9.0	12.0	15.0	18.0	21.0	24.0	27.0	30.0	33.0	36.0	39.0	42.0	45.0	48.0
4.0	3.9m× 5.8	3.9m× 5.8	4.4m× 5.8	4.9m× 5.8										
5.0	5.8	5.8	5.8	5.8	5.4m× 5.8	5.9m× 5.8								
6.0	5.8	5.8	5.8	5.8	5.8	5.8	6.5m× 5.8							
7.0	5.8	5.8	5.8	5.8	5.8	5.8	5.8	5.8	7.5m× 5.8					
8.0	5.8	5.8	5.8	5.8	5.8	5.8	5.8	5.8	5.8	8.0m× 5.8	8.6m× 5.8			
9.0	5.8	5.8	5.8	5.8	5.8	5.8	5.8	5.8	5.8	5.8	5.8	9.1m× 5.8	9.6m× 5.8	
10.0	9.9m× 5.8	5.8	5.8	5.8	5.8	5.8	5.8	5.8	5.8	5.8	5.8	5.8	5.8	10.1m× 5.8
12.0		5.8	5.8	5.8	5.8	5.8	5.8	5.8	5.8	5.8	5.8	5.8	5.8	5.8
14.0		12.5m× 5.8	5.8	5.8	5.8	5.8	5.8	5.8	5.8	5.8	5.8	5.8	5.8	5.8
16.0			15.1m× 5.8	5.8	5.8	5.8	5.8	5.8	5.8	5.7	5.6	5.5	5.4	5.3
18.0				17.7m× 5.5	5.3	5.2	5.1	5.0	4.9	4.8	4.7	4.6	4.5	4.4
20.0					4.5	4.5	4.4	4.3	4.2	4.1	4.0	3.9	3.8	3.7
22.0					20.3m× 4.4	3.8	3.8	3.7	3.6	3.5	3.4	3.3	3.2	3.1
24.0						22.9m× 3.6	3.3	3.2	3.1	3.0	2.9	2.8	2.7	2.6
26.0							24.5m× 2.9	2.7	2.6	2.5	2.4	2.3	2.2	2.1
28.0								2.3	2.3	2.2	2.1	2.0	1.9	1.8
30.0									28.1m× 2.3	1.9	1.9	1.8	1.7	1.6
32.0										30.7m× 1.8	1.6	1.5	1.4	1.3
34.0											33.3m× 1.4	1.2	1.1	1.0

## Jib rated lifting loads (with 17.7 ton counterweight)

Unit: metric ton

Boom length (m)	9.0								12.0							
Jib length (m)	6.0		9.0		12.0		15.0		6.0		9.0		12.0		15.0	
Offset angle	10°	30°	10°	30°	10°	30°	10°	30°	10°	30°	10°	30°	10°	30°	10°	30°
Working radius (m)																
3.0																
4.0																
4.5																
5.0	5.0									5.5m × 5.0						
6.0	5.0	6.7m × 5.0	6.1m × 5.0							5.0		6.6m × 5.0				
7.0	5.0	5.0	5.0		4.0		7.4m × 2.6		5.0	7.3m × 5.0	5.0		7.4m × 4.0			
8.0	5.0	5.0	5.0	8.7m × 4.1	4.0		2.6		5.0	5.0	5.0		4.0			
9.0	5.0	5.0	5.0	4.1	4.0		2.6		5.0	5.0	5.0	9.2m × 4.1	4.0		2.6	
10.0	5.0	5.0	5.0	4.1	4.0	10.4m × 3.2	2.6		5.0	5.0	5.0	4.1	4.0	10.9m × 3.2	2.6	
12.0	5.0	5.0	5.0	4.1	4.0	3.2	2.6	2.3	5.0	5.0	5.0	4.1	4.0	3.2	2.6	12.4m × 2.3
14.0	5.0	5.0	5.0	4.1	4.0	3.2	2.6	2.3	5.0	5.0	5.0	4.1	4.0	3.2	2.6	2.3
16.0	15.0m × 5.0	15.4m × 5.0	5.0	4.1	4.0	3.2	2.6	2.3	5.0	5.0	5.0	4.1	4.0	3.2	2.6	2.3
18.0			17.8m × 5.0	4.1	4.0	3.2	2.6	2.3	17.6m × 5.0	5.0	5.0	4.1	4.0	3.2	2.6	2.3
20.0				18.4m × 4.1	4.0	3.2	2.6	2.3		5.0	4.1	4.0	3.2	2.6	2.3	
22.0					20.6m × 4.0	21.4m × 3.2	2.6	2.3			21.0m × 4.1	4.0	3.2	2.6	2.3	
24.0							23.2m × 2.6	2.3				23.2m × 4.0	3.2	2.6	2.3	
26.0								24.4m × 2.3							25.8m × 2.6	2.3
28.0																27.0m × 2.3
30.0																
32.0																
34.0																

Boom length (m)	15.0								18.0							
Jib length (m)	6.0		9.0		12.0		15.0		6.0		9.0		12.0		15.0	
Offset angle	10°	30°	10°	30°	10°	30°	10°	30°	10°	30°	10°	30°	10°	30°	10°	30°
Working radius (m)																
3.0																
4.0																
4.5																
5.0																
6.0	5.0									6.5m × 5.0						
7.0	5.0	7.8m × 5.0	7.1m × 5.0						5.0		7.6m × 5.0					
8.0	5.0	5.0	5.0		4.0		2.6		5.0	8.3m × 5.0	5.0		8.4m × 4.0			
9.0	5.0	5.0	5.0	9.7m × 4.1	4.0		2.6		5.0	5.0	5.0		4.0		2.6	
10.0	5.0	5.0	5.0	4.1	4.0	11.4m × 3.2	2.6		5.0	5.0	5.0	10.3m × 4.1	4.0		2.6	
12.0	5.0	5.0	5.0	4.1	4.0	3.2	2.6	12.9m × 2.3	5.0	5.0	5.0	4.1	4.0	3.2	2.6	
14.0	5.0	5.0	5.0	4.1	4.0	3.2	2.6	2.3	5.0	5.0	5.0	4.1	4.0	3.2	2.6	13.4m × 2.3
16.0	5.0	5.0	5.0	4.1	4.0	3.2	2.6	2.3	5.0	5.0	5.0	4.1	4.0	3.2	2.6	2.3
18.0	5.0	5.0	5.0	4.1	4.0	3.2	2.6	2.3	5.0	5.0	5.0	4.1	4.0	3.2	2.6	2.3
20.0	5.0	5.0	5.0	4.1	4.0	3.2	2.6	2.3	5.0	5.0	5.0	4.1	4.0	3.2	2.6	2.3
22.0	20.2m × 5.0	20.6m × 4.9	5.0	4.1	4.0	3.2	2.6	2.3	4.4	4.4	4.4	4.1	4.0	3.2	2.6	2.3
24.0			23.0m × 4.2	23.6m × 4.1	4.0	3.2	2.6	2.3	22.8m × 4.2	23.2m × 4.0	3.9	3.9	3.9	3.2	2.6	2.3
26.0					25.8m × 3.5	3.2	2.6	2.3			25.7m × 3.4	3.3	3.3	3.2	2.6	2.3
28.0						26.6m × 3.2	2.6	2.3				26.2m × 3.3	3.0	3.0	2.6	2.3
30.0							28.4m × 2.6	29.6m × 2.3					28.4m × 2.9	29.2m × 2.8	2.6	2.3
32.0															31.0m × 2.5	2.3
34.0																

## ■ Jib rated lifting loads (with 17.7 ton counterweight)

Unit: metric ton

Boom length (m)	21.0								24.0								
	6.0		9.0		12.0		15.0		6.0		9.0		12.0		15.0		
Jib length (m)	10°	30°	10°	30°	10°	30°	10°	30°	10°	30°	10°	30°	10°	30°	10°	30°	
Offset angle																	
Working radius (m)																	
3.0																	
4.0																	
4.5																	
5.0																	
6.0																	
7.0	7.1m × 5.0								7.6m × 5.0								
8.0	5.0	8.3m × 5.0	8.2m × 5.0						5.0		8.7m × 5.0						
9.0	5.0	5.0	5.0		4.0		9.5m × 2.6		5.0	9.3m × 5.0	5.0		9.5m × 4.0				
10.0	5.0	5.0	5.0	10.8m × 4.1	4.0		2.6		5.0	5.0	5.0	11.3m × 4.1	4.0		2.6		
12.0	5.0	5.0	5.0	4.1	4.0	12.5m × 3.2	2.6		5.0	5.0	5.0	4.1	4.0	13.0m × 3.2	2.6		
14.0	5.0	5.0	5.0	4.1	4.0	3.2	2.6	2.3	5.0	5.0	5.0	4.1	4.0	3.2	2.6	14.5m × 2.3	
16.0	5.0	5.0	5.0	4.1	4.0	3.2	2.6	2.3	5.0	5.0	5.0	4.1	4.0	3.2	2.6	2.3	
18.0	5.0	5.0	5.0	4.1	4.0	3.2	2.6	2.3	5.0	5.0	5.0	4.1	4.0	3.2	2.6	2.3	
20.0	5.0	5.0	5.0	4.1	4.0	3.2	2.6	2.3	4.9	4.9	4.9	4.1	4.0	3.2	2.6	2.3	
22.0	4.3	4.3	4.3	4.1	4.0	3.2	2.6	2.3	4.3	4.3	4.3	4.1	4.0	3.2	2.6	2.3	
24.0	3.8	3.8	3.8	3.8	3.8	3.2	2.6	2.3	3.7	3.7	3.7	3.7	3.7	3.2	2.6	2.3	
26.0	25.4m × 3.4	25.8m × 3.3	3.3	3.3	3.3	3.2	2.6	2.3	3.2	3.2	3.2	3.2	3.2	3.2	2.6	2.3	
28.0			2.9	2.9	2.9	2.9	2.6	2.3	2.9	2.9	2.9	2.9	2.9	2.9	2.6	2.3	
30.0			28.2m × 2.9	28.8m × 2.8	2.6	2.6	2.6	2.3		28.4m × 2.8	2.6	2.6	2.6	2.6	2.6	2.3	
32.0					31.0m × 2.5	31.8m × 2.3	2.3	2.3			30.8m × 2.4	31.4m × 2.3	2.2	2.2	2.2	2.2	
34.0							33.6m × 2.2	2.0					33.6m × 2.0	1.9	1.9	1.9	

Boom length (m)	27.0								30.0								
	6.0		9.0		12.0		15.0		6.0		9.0		12.0		15.0		
Jib length (m)	10°	30°	10°	30°	10°	30°	10°	30°	10°	30°	10°	30°	10°	30°	10°	30°	
Offset angle																	
Working radius (m)																	
3.0																	
4.0																	
4.5																	
5.0																	
6.0																	
7.0																	
8.0	8.1m × 5.0								8.6m × 5.0								
9.0	5.0		9.2m × 5.0						5.0		9.7m × 5.0						
10.0	5.0	5.0	5.0	11.8m × 4.1	4.0		10.5m × 2.6		5.0	10.4m × 5.0	5.0		10.5m × 4.0		11.0m × 2.6		
12.0	5.0	5.0	5.0	4.1	4.0		2.6		5.0	5.0	5.0	12.3m × 4.1	4.0		2.6		
14.0	5.0	5.0	5.0	4.1	4.0	13.5m × 3.2	2.6	15.0m × 2.3	5.0	5.0	5.0	4.1	4.0	3.2	2.6	15.5m × 2.3	
16.0	5.0	5.0	5.0	4.1	4.0	3.2	2.6	2.3	5.0	5.0	5.0	4.1	4.0	3.2	2.6	2.3	
18.0	5.0	5.0	5.0	4.1	4.0	3.2	2.6	2.3	5.0	5.0	5.0	4.1	4.0	3.2	2.6	2.3	
20.0	4.8	4.8	4.8	4.1	4.0	3.2	2.6	2.3	4.7	4.7	4.7	4.1	4.0	3.2	2.6	2.3	
22.0	4.2	4.2	4.2	4.1	4.0	3.2	2.6	2.3	4.1	4.1	4.1	4.1	4.0	3.2	2.6	2.3	
24.0	3.7	3.7	3.7	3.7	3.7	3.2	2.6	2.3	3.6	3.6	3.6	3.6	3.6	3.2	2.6	2.3	
26.0	3.1	3.1	3.1	3.1	3.1	3.1	2.6	2.3	3.1	3.1	3.1	3.1	3.1	3.1	2.6	2.3	
28.0	2.8	2.8	2.8	2.8	2.8	2.8	2.6	2.3	2.8	2.8	2.8	2.8	2.8	2.8	2.6	2.3	
30.0	2.5	2.5	2.5	2.5	2.5	2.5	2.5	2.3	2.4	2.4	2.4	2.4	2.4	2.4	2.4	2.3	
32.0	30.6m × 2.4	31.0m × 2.3	2.2	2.2	2.2	2.2	2.2	2.2	2.1	2.1	2.1	2.1	2.1	2.1	2.1	2.1	
34.0			33.4m × 1.9	1.8	1.8	1.8	1.8	1.8	33.2m × 1.9	33.6m × 1.8	1.8	1.8	1.8	1.8	1.8	1.8	

## Jib rated lifting loads (with 17.7 ton counterweight)

Unit: metric ton

Boom length (m)	33.0								36.0							
	6.0		9.0		12.0		15.0		6.0		9.0		12.0		15.0	
Jib length (m)	6.0		9.0		12.0		15.0		6.0		9.0		12.0		15.0	
Offset angle	10°	30°	10°	30°	10°	30°	10°	30°	10°	30°	10°	30°	10°	30°	10°	30°
Working radius (m)																
3.0																
4.0																
4.5																
5.0																
6.0																
7.0																
8.0																
9.0	9.1m × 5.0								9.7m × 5.0							
10.0	5.0	10.9m × 5.0	10.2m × 5.0		11.0m × 4.0		11.5m × 2.6		5.0	11.4m × 5.0	10.8m × 5.0		11.6m × 4.0			
12.0	5.0	5.0	5.0	12.9m × 4.1	4.0		2.6		5.0	5.0	5.0	13.4m × 4.1	4.0		12.1m × 2.6	
14.0	5.0	5.0	5.0	4.1	4.0	14.6m × 3.2	2.6		5.0	5.0	5.0	4.1	4.0	15.1m × 3.2	2.6	
16.0	5.0	5.0	5.0	4.1	4.0	3.2	2.6	2.3	5.0	5.0	5.0	4.1	4.0	3.2	2.6	16.5m × 2.3
18.0	5.0	5.0	5.0	4.1	4.0	3.2	2.6	2.3	5.0	5.0	5.0	4.1	4.0	3.2	2.6	2.3
20.0	4.6	4.6	4.6	4.1	4.0	3.2	2.6	2.3	4.5	4.5	4.5	4.1	4.0	3.2	2.6	2.3
22.0	4.0	4.0	4.0	4.0	4.0	3.2	2.6	2.3	3.9	3.9	3.9	3.9	3.9	3.2	2.6	2.3
24.0	3.5	3.5	3.5	3.5	3.5	3.2	2.6	2.3	3.4	3.4	3.4	3.4	3.4	3.2	2.6	2.3
26.0	3.0	3.0	3.0	3.0	3.0	3.0	2.6	2.3	2.9	2.9	2.9	2.9	2.9	2.9	2.6	2.3
28.0	2.7	2.7	2.7	2.7	2.7	2.7	2.6	2.3	2.5	2.5	2.6	2.6	2.6	2.6	2.6	2.3
30.0	2.3	2.3	2.3	2.3	2.3	2.3	2.3	2.3	2.2	2.2	2.3	2.3	2.3	2.3	2.3	2.3
32.0	2.0	2.0	2.0	2.0	2.0	2.0	2.0	2.0	1.9	1.9	2.0	2.0	2.0	2.0	2.0	2.0
34.0	1.7	1.7	1.7	1.7	1.7	1.7	1.7	1.7	1.6	1.6	1.7	1.7	1.7	1.7	1.7	1.7

Boom length (m)	39.0								42.0							
	6.0		9.0		12.0		15.0		6.0		9.0		12.0		15.0	
Jib length (m)	6.0		9.0		12.0		15.0		6.0		9.0		12.0		15.0	
Offset angle	10°	30°	10°	30°	10°	30°	10°	30°	10°	30°	10°	30°	10°	30°	10°	30°
Working radius (m)																
3.0																
4.0																
4.5																
5.0																
6.0																
7.0																
8.0																
9.0																
10.0	10.2m × 5.0		11.3m × 5.0						10.7m × 5.0		11.8m × 5.0					
12.0	5.0	5.0	5.0		12.1m × 4.0		12.6m × 2.6		5.0	12.5m × 5.0	5.0		12.6m × 4.0		13.1m × 2.6	
14.0	5.0	5.0	5.0	4.1	4.0	15.6m × 3.2	2.6		5.0	5.0	5.0	14.4m × 4.1	4.0		2.6	
16.0	5.0	5.0	5.0	4.1	4.0	3.2	2.6	17.1m × 2.3	5.0	5.0	5.0	4.1	4.0	16.1m × 3.2	2.6	17.6m × 2.3
18.0	5.0	5.0	5.0	4.1	4.0	3.2	2.6	2.3	5.0	5.0	5.0	4.1	4.0	3.2	2.6	2.3
20.0	4.4	4.4	4.4	4.1	4.0	3.2	2.6	2.3	4.3	4.3	4.3	4.1	4.0	3.2	2.6	2.3
22.0	3.8	3.8	3.8	3.8	3.8	3.2	2.6	2.3	3.7	3.7	3.7	3.7	3.7	3.2	2.6	2.3
24.0	3.3	3.3	3.3	3.3	3.3	3.2	2.6	2.3	3.1	3.1	3.1	3.1	3.1	3.1	2.6	2.3
26.0	2.8	2.8	2.8	2.8	2.8	2.8	2.6	2.3	2.7	2.7	2.7	2.7	2.7	2.7	2.6	2.3
28.0	2.4	2.4	2.4	2.5	2.5	2.5	2.5	2.3	2.3	2.3	2.3	2.4	2.4	2.4	2.4	2.3
30.0	2.0	2.0	2.0	2.2	2.2	2.2	2.2	2.2	1.9	1.9	1.9	2.1	2.1	2.1	2.1	2.1
32.0	1.7	1.7	1.7	1.9	1.9	1.9	1.9	1.9	1.6	1.6	1.6	1.8	1.8	1.8	1.8	1.8
34.0	1.4	1.4	1.4	1.6	1.6	1.6	1.6	1.6	1.3	1.3	1.3	1.5	1.5	1.5	1.5	1.5

## ■ Jib rated lifting loads (with 17.7 ton counterweight)

Unit: metric ton

Boom length (m)	45.0			
	6.0		9.0	
Jib length (m)				
Offset angle	10°	30°	10°	30°
Working radius (m)				
3.0				
4.0				
4.5				
5.0				
6.0				
7.0				
8.0				
9.0				
10.0	11.2m × 5.0			
12.0	5.0	13.0m × 5.0	12.4m × 5.0	
14.0	5.0	5.0	5.0	15.0m × 4.1
16.0	5.0	5.0	5.0	4.1
18.0	4.9	4.9	4.9	4.1
20.0	4.2	4.2	4.2	4.1
22.0	3.6	3.6	3.6	3.6
24.0	3.1	3.1	3.1	3.1
26.0	2.6	2.6	2.6	2.6
28.0	2.2	2.2	2.2	2.3
30.0	1.8	1.8	1.8	2.0
32.0	1.5	1.5	1.5	1.7
34.0	1.2	1.2	1.2	1.4

## ■ Notes

- All rated loads are based on the machine being operated on the firm, level, uniformly supporting surface ground, at any point of 360° around the machine within 78% of tipping load and forward stability factor over 1.15.  
Working radius is horizontal distance from center of rotation to a vertical line through the center of gravity of the load.
- To determine actual lifting loads, the weight of all lifting devices such as hook must be reduced from the lifting loads.
 

50 ton hook	.....650 kg	15 ton hook	.....450 kg
35 ton hook	.....500 kg	5.8 ton hook	.....120 kg
- The following weight must be reduced from the lifting loads to determine rated lifting loads for main boom when the jib is equipped.
 

Aux. jib	.....400 kg	12.0 m jib	.....1,200 kg
6.0 m jib	.....750 kg	15.0 m jib	.....1,450 kg
9.0 m jib	.....950 kg		
- Depending on the number of part lines, rated lifting loads are limited as follows.
 

1 part line	.....up to 6.5 ton	5 part lines	.....up to 32.5 ton
2 part lines	.....up to 13.0 ton	6 part lines	.....up to 39.0 ton
3 part lines	.....up to 19.5 ton	7 part lines	.....up to 45.5 ton
4 part lines	.....up to 26.0 ton	8 part lines	.....up to 50.0 ton
- The aux. jib can be equipped in the range of boom length from 9 m to 48 m boom. To determine the rated lifting loads, 0.4 ton must be reduced from the lifting loads for each boom length in the lifting load chart. However the max. lifting load should not exceed aux. jib capacity of the load.
- When the 6 m~15 m jib mounted, the lifting loads to be determined by "Jib Rated Lifting Loads".
- The total weight of the main hook and the jib hook must be reduced from the rated load when lifting on the jib hook with the main hook being attached.
- The angle formed by the extension line of main boom and the centerline of jib (offset angle) should not exceed 30 degree while the loads being lifted.

# IHI IHI Construction Machinery Limited

Kishi-Tokai Bldg., 8-4-4 Nishikamata, Ota-ku, Tokyo 144-8577 JAPAN  
Phone: +81-3-5714-8844 Fax: +81-3-5714-8840, 8841

Specifications are subject to change without notice due to technical improvements or modifications.  
Distributed by

