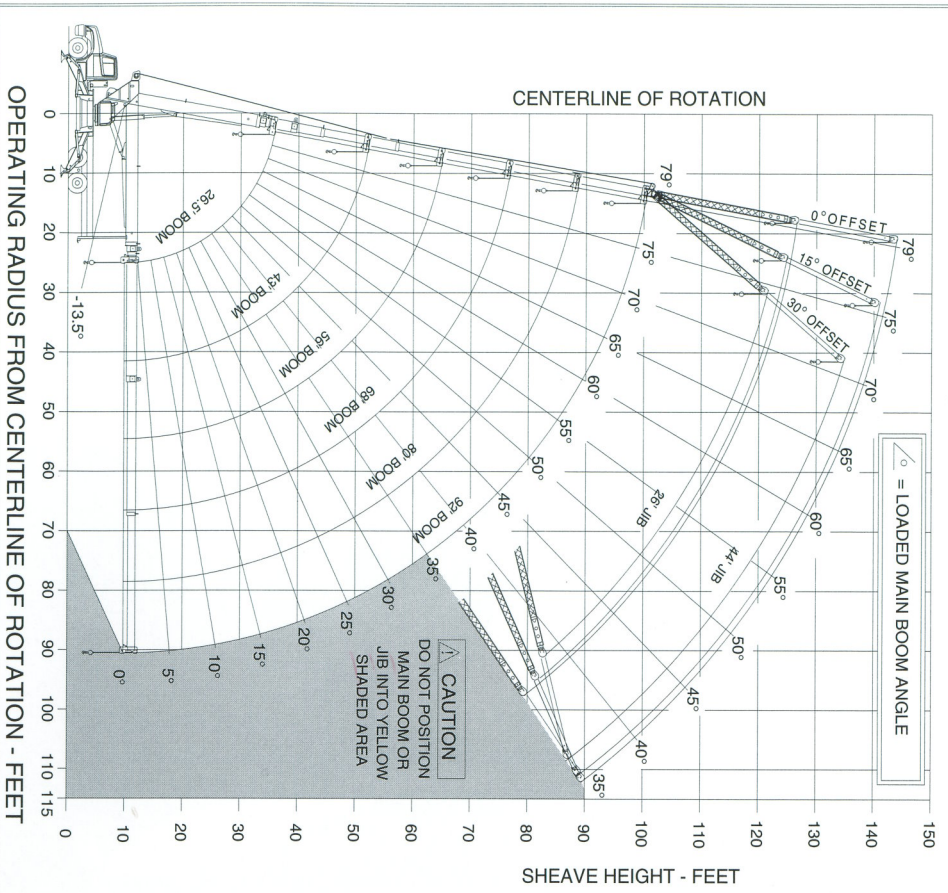


"X" SPREAD IS 21' 4"

RANGE DIAGRAM

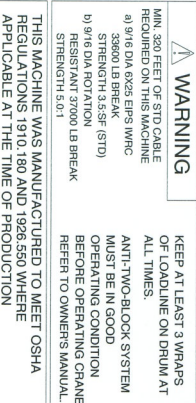


**WARNING**  
 MIN. 320 FEET OF STD. CABLE REQUIRED ON THIS MACHINE  
 a) 9/16 DIA. 6X25 EIPS WMC 33800 LB BREAK STRENGTH 3.5:1 (STD)  
 b) 3/8 DIA. ROTATION RESISTANT 3000 LB BREAK STRENGTH 3:1

**CAUTION**  
 KEEP AT LEAST 3 WRAPS OF LOADLINE ON DRUM AT ALL TIMES.  
 ANTI-TWO-BLOCK SYSTEM MUST BE IN GOOD OPERATING CONDITION BEFORE OPERATING CRANE. REFER TO OWNERS MANUAL.

**CAUTION**  
 DEDUCTIONS FROM RATED LOADS FOR LOAD HANDLING DEVICES SUPPLIED BY PIONEER CRANES

OVERHAUL BALL SINGLE SHEAVE LOAD BLOCK 170 LBS  
 DOUBLE SHEAVE LOAD BLOCK 340 LBS  
 TRIPLE SHEAVE LOAD BLOCK 380 LBS



**THIS MACHINE WAS MANUFACTURED TO MEET OSHA REGULATIONS 1910.180 AND 1926.550 WHERE APPLICABLE AT THE TIME OF PRODUCTION**

RAD FT.	BOOM LOAD RATING IN LBS. WITH OUTRIGGERS EXTENDED AND MACHINE LEVEL									
	26 FT BOOM	43 FT BOOM	56 FT BOOM	68 FT BOOM	80 FT BOOM	92 FT BOOM	26 FT BOOM	43 FT BOOM	56 FT BOOM	68 FT BOOM
5	57600									
8	38200									
10	32000	25000								
12	27900	22750	22400							
14	25300	20400	19900	78	18500					
16	22100	17950	17500	72	16850	76	16850			
20	18600	15200	15600	68	15200	72	12950	76	12550	
24	13750	13100	11250	63	11250	69	10680	73	9970	76
30		10500	9770	64	9770	64	8870	68	8370	72
35		9170	8370	50	8370	59	7470	64	6770	68
40		7170	7070	43	7070	54	6370	60	5770	65
45			5970	35	5970	48	5370	56	4970	61
50			4970	24	4970	42	4770	51	4370	58
55				35	4070	35	4070	46	3770	54
60				26	3470	26	3470	41	3270	50
65				13	2670	13	2670	35	2870	45
70								28	2470	40
75								18	1870	35
80								8	1370	29
85										21
90										8
MAX PARTS OF LINE		6	4	3	2	2	2	2	2	2
JIB DEDUCTION LBS.		600	370	285	235	200	175	175	175	175

**PIONEER CRANES**  
 301 DUCK ROAD, GRANDVIEW, MISSOURI USA, 64030

**X4000-RCC**  
 LOAD RATING CHART

93-00002

**PIONEER X4000-RCC**

