

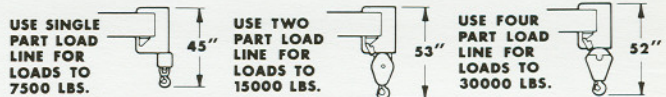
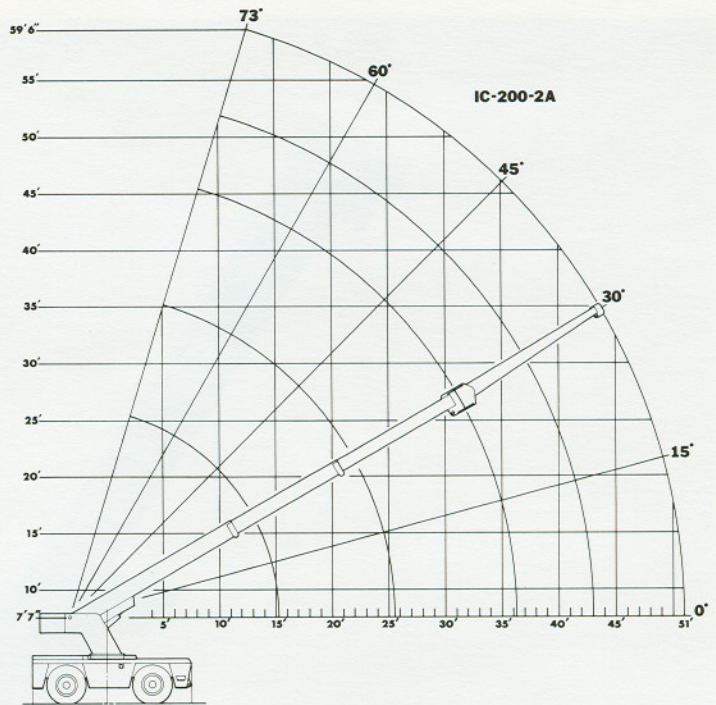
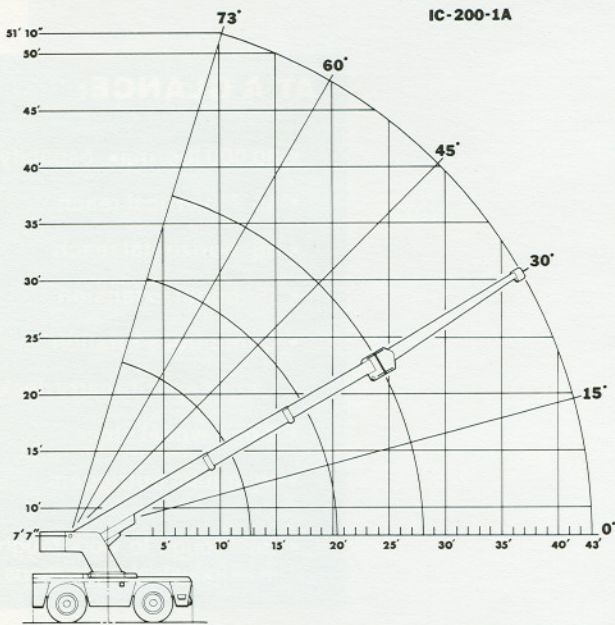
## AT A GLANCE:

- 30,000 lbs. max. capacity
- 45'7" vertical reach
- 36' horizontal reach
- 15' boom extension
- Continuous rotation
- Large capacity carry deck
- 2 or 4 wheel steer
- Hydraulic outriggers
  
- Built tough to work tough  
in all industrial applications.

**BMC BRODERSON**  
Manufacturing Corp.

P.O. Box 14770, Lenexa, Kansas 66215 • (913) 888-0606

# IC-200



ALL CAPACITIES FOR 360° ROTATION

LOAD RADIUS FEET	BOOMS RETRACTED ON O/R*	BOOMS EXTENDED		15' BOOM EXTENSION INSTALLED		
		ON RUBBER		ON O/R*	ON RUBBER	ON O/R*
		4 x 4 Steer**	4 x 2 Steer			
6	30000	16000	14000	30000	7500	7500
8	25000	13000	11000	24000	7500	7500
10	20000	11000	9400	20000	7100	7100
12	16000	9300	8000	16000	6150	6150
14		7000	6800	11950	5425	5425
16		5700	5700	10500	4850	4850
19		4325	4325	8875	4175	4175
22		3350	3350	7600	3675	3675
25		2775	2275	6350	3275	3275
28		2400	2400	5300	2950	3000
31					2350	3000
34					1925	3000
38					1475	3000
43					1100	2800

\*OUTRIGGERS  
\*\*OPTIONAL 4 WHEEL STEERING

ALL CAPACITIES FOR 360° ROTATION

LOAD RADIUS FEET	BOOMS RETRACTED ON O/R*	BOOMS EXTENDED		15' BOOM EXTENSION INSTALLED		
		ON RUBBER		ON O/R*	ON RUBBER	ON O/R*
		4 x 4 Steer**	4 x 2 Steer			
6	30000	16000	14000	3000	7500	7500
8	25000	13000	11000	23900	7500	7500
10	19500	11000	9300	20000	7100	7100
12	16000	9300	7900	16000	6150	6150
14	13500	7000	6700	12500	5425	5425
16		5700	5700	9500	4850	4850
19		4200	4200	7900	4175	4175
22		3300	3300	7050	3675	3675
25		2500	2500	6100	3275	3275
28		2050	2050	5100	2775	3000
32		1600	1600	4080	2100	3000
36		1240	1240	3715	1650	3000
40					1230	2800
45					875	2500
51					775	2200

\*OUTRIGGERS  
\*\*OPTIONAL 4 WHEEL STEERING

**General:**

**Weight:** 25,910 lbs.—IC-200-1A  
26,250 lbs.—IC-200-2A

**Travel Speeds-MPH**

Gear	Standard Drive Axle	Optional Drive/ Steer Axle
1st	6	2.5
2nd	11	5.8
3rd	21	11
4th	N/A	19

**Drawbar pull: Pounds**

Gear	Standard Axle	Optional Axle
1st	7,200	17,400*
2nd	3,250	8,250
3rd	1,500	4,180
4th	N/A	2,300

\*Wheels will spin before this pull is reached.

Turning radius (C/L of outer tire)	Standard Axle	Optional Axle
Aisle width for 90° turn	18'6"	13'5"
	13'8"	11'6"

**Engine:**

Make	Std. Chrysler	Opt. Perkins	Opt. Deere
<b>Model</b>	HB-225	4.236	4219
<b>Type</b>	Gas	Diesel	Diesel
<b>No. Cyl.</b>	6	4	4
<b>Displacement</b>	225	236	219
<b>HP @ Gov. Speed</b>	97	80	70

**Electrical:**

**12 volt system**

**Lighting group:**

1 pair headlights with Hi and Lo beams  
Integral tail, brake and turn signals and front turn signals

**Instrument group:**

Fuel, ammeter, oil pressure, water temperature, convertor  
oil temperature gauges and hourmeter

**Fuel Tank:**

30 gallon capacity

**Transmission:**

**3 speed**

<b>Make</b>	Warner Gear
<b>Model</b>	T-18

**Gear ratios**

1	6.324:1
2	3.092:1
3	1.686:1

**Reversing gear box**

<b>Make</b>	Warner Gear
<b>Model</b>	PR-1

An oil cooler for torque convertor and reversing gear box oil is standard equipment

**Torque Converter:**

Stall torque ratio of 2.0:1

**Steering:**

Full hydraulic orbitrol unit with two double-acting, 3 inch cylinders attached to rear axle.

**Axes:**

Drive axle (standard)		Drive/Steer Axle (optional)	
<b>Make</b>	Dana	<b>Make</b>	Clark
<b>Ratio</b>	7.17:1	<b>Ratio</b>	16.65:1
<b>Location</b>	Front	<b>Location</b>	Front
<b>Steering axle</b>			
<b>Make</b>	Rockwell	<b>Make</b>	Rockwell
<b>Location</b>	Rear	<b>Location</b>	Rear

**Brakes:**

**Service**-Standard front axle-Disc  
Optional front axle-Drum  
Rear axle-Drum

**Parking**-Band type-mounted on drive line

**Tires:**

**Standard**-15.00 x 22.5, 16-ply rating, Highway tread  
**Optional**-Grizzley Supersoft 10.00 x 20 Solid Rubber

**Crane**

Boom Movement	IC-200-1A	IC-200-2A
Rotation-	Continuous	Continuous
Elevation-	0° to 73°	0° to 73°
Extension-	12'8" to 28'	15'2" to 36'2"
<b>Boom Speeds:</b>		
Rotation-	1.8 RPM	1.8 RPM
Elevation-	21 seconds	21 seconds
Extension-	18 seconds	25 seconds

**Boom Assembly:**

Three section boom assembly equipped with bearing pad, double-acting hydraulic cylinders equipped with direct-connected holding valve and boom angle indicator on each side of boom.

**Boom Rotation:**

Heavy-duty ball bearing rotation gear with external teeth support boom. Rotation is powered by hydraulic motor and worm gear drive.

**Boom Winch:**

Turret-mounted  
Hydraulic powered  
Bare drum line pull of 10,000 lbs.  
Winch line speed-110 ft. per minute  
220 ft. of 1/2 in. wire rope, downhaul weight and swivel hook, standard.

**Cargo Deck:**

71 sq. ft. deck area  
17,000 lbs. maximum capacity  
Steps located on front corners

**Hydraulic System:**

Tandem pump, direct-driven by engine crankshaft, rated at 22 and 34 G.P.M. at rated R.P.M.  
Hydraulic oil tank capacity-34 gallons

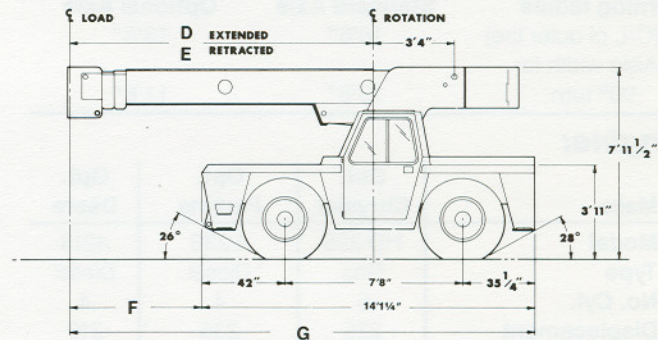
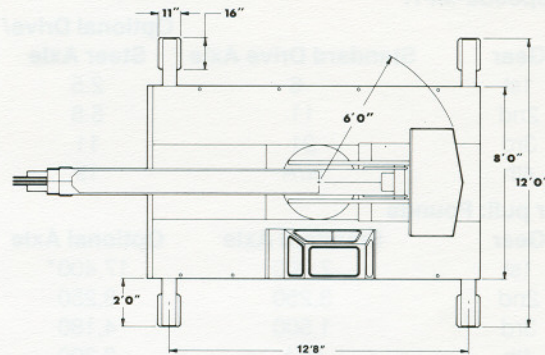
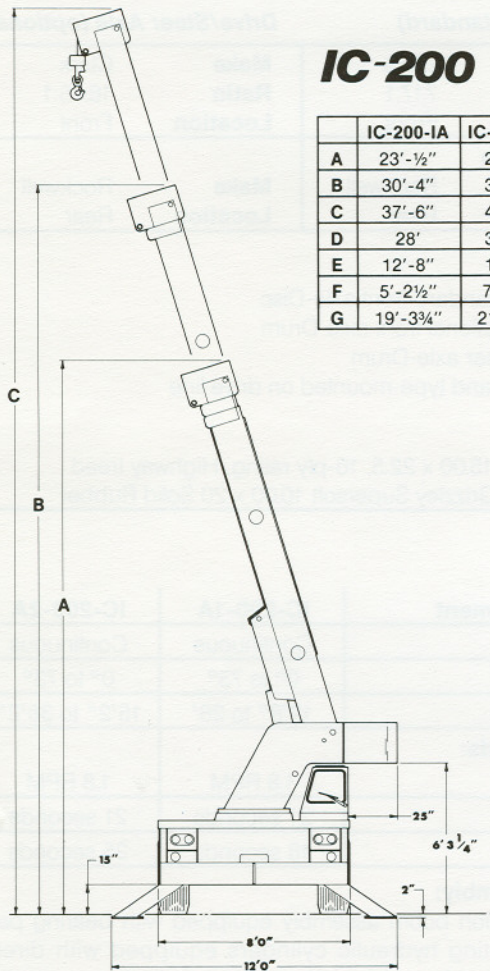
**Outriggers:**

Four hydraulic outriggers of box beam construction with direct connected holding valves  
Independent controls for left and right hand outriggers  
Outrigger pad dimension 11" x 16"

# IC-200

## IC-200

	IC-200-1A	IC-200-2A
A	23'-½"	25'-5"
B	30'-4"	35'-6"
C	37'-6"	45'-7"
D	28'	36'-2"
E	12'-8"	15'-2"
F	5'-2½"	7'-8½"
G	19'-3¼"	21'-9¾"



### Options:

#### All Weather Cab

Rigid-mounted canopy section and removable hinged door. Includes heater and 12 volt electric windshield wiper and two sliding windows, one in the door and one in the right-hand side.

#### Anti-Two Blocking Device

Prevents damage to hoist rope and/or crane components from pulling load hook against boom tip.

#### Auxiliary Winch

Mounted behind front bumper, hydraulically driven with control in operators console.

#### Back-Up Alarm

Provides pulsating sound when transmission is in reverse.

#### 15 foot Boom Extension

Boom stowable. Fiberglass bucket(s) or Work Platform can be attached to boom extension tip.

#### Bucket/Platform Brake

Friction brake for holding bucket(s) or Work Platform in a fixed position.

#### Defroster

Variable speed electric fan inside operator's cab.

#### Fiberglass Bucket(s)

24" x 24" x 42" deep, personal bucket with maximum capacity of 300 pounds.

#### LP Gas Fuel System Kit

Contains all necessary components for LPG operation.

#### No-Spin Differential

Differential equipped with "no-spin" feature.

#### Operators Guard

Tubular steel welment with heavy expanded steel mesh top section.

#### Overload Alert System

Designed to prevent excessive overloads on crane structures.

#### Pintle Hook

Holland "T-60-AOL" pintle hook mounted on rear frame. 24 ton capacity.

#### Sheave Block

Required for maximum capacity lifts.

#### Solid Rubber Tires

For operation on hazardous ground conditions. Does not change height of crane.

#### Work Platform

69" x 32 7/8" x 42" deep, constructed of steel tubing with expanded metal floor. Maximum capacity of 600 pounds.

**BMC BRODERSON**  
Manufacturing Corp.

P.O. Box 14770, Lenexa, Kansas 66215 • (913) 888-0606