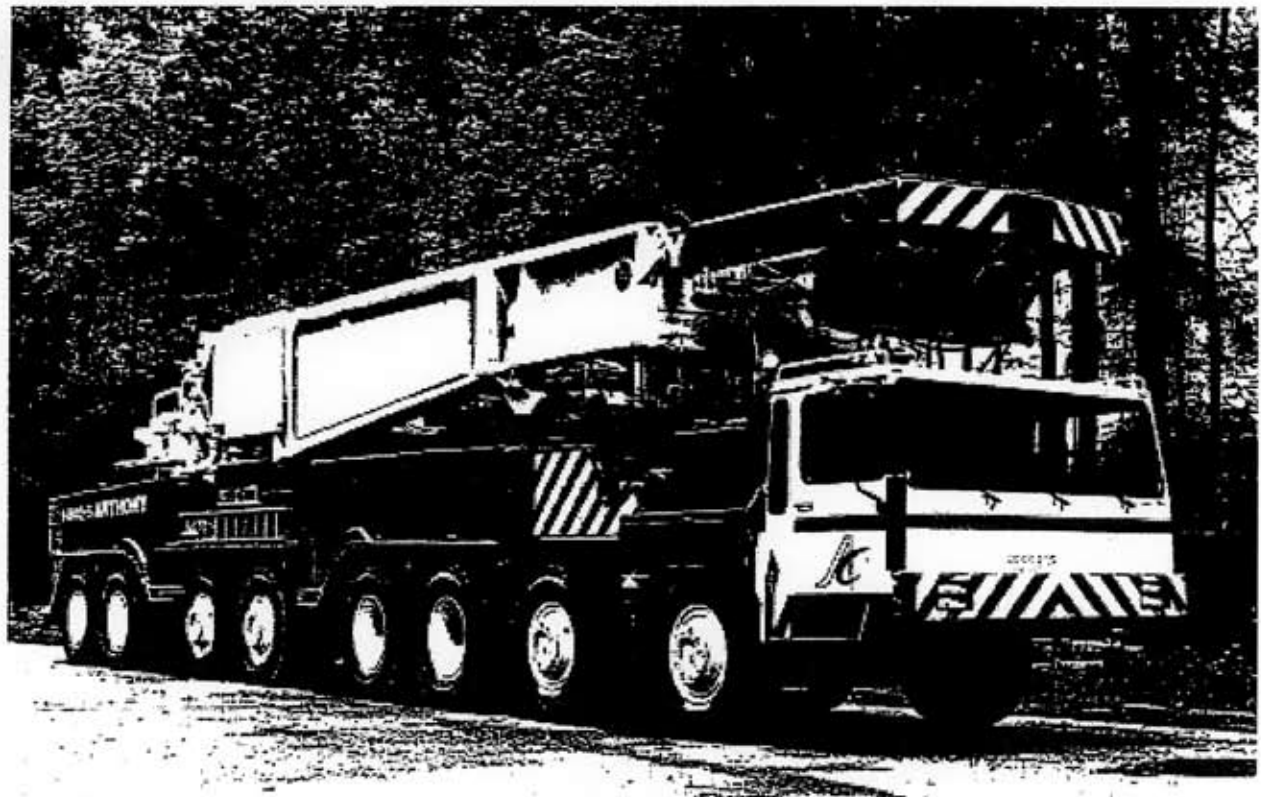


**LIEBHERR**

**LG/LTM 11000**

**1000 TON COMPLETELY ROADABLE CRANE**  
**325 ft MAIN BOOM - 300 ft JIB**



# Technical description.

## Truck chassis.

Frame:	Liebherr designed and manufactured, box type, torsion resistant, all-welded construction made of high-tensile structural steel.
Outriggers:	4 hydraulic swing-out beams with support pad jacks.
Engine:	Diesel, 12 cylinder, watercooled, make Daimler-Benz, type OM 444 A, output 390 kW DIN (530 HP) at 2100 min <sup>-1</sup> , max. torque 1813 lbs-ft at 1300 min <sup>-1</sup> . Fuel tank capacity: 132 gallons.
Transmission:	Allison type CLBT 755 automatic transmission with torque converter and hydrodynamic retarder brake. 5 forward speeds, 1 reverse. Splitter gearbox with differential and differential lock, off-road range.
Axles:	Heavy duty crane truck axles, all 8 axles sprung. Axles 1 to 4 and 7 and 8 steered. Axles 1, 2, 5 and 6 have planetary reduction gears with differential locks.
Suspension:	All axles are hydropneumatically sprung with automatic levelling. Load equalization between all axle pairs. Suspension can be hydraulically locked.
Tyres:	24 tyres. Axles 1, 2, 5 and 6 with single tyres, axles 3, 4, 7 and 8 with twin tyres. Tyre size: 14.00 R 25.
Steering:	ZF semi-unitary hydraulic power steering with 2 pump circuits. Main pump circuit driven from engine, auxiliary pump circuit from final drive.
Brakes:	Service brake: servo assisted air brakes acting on all wheels, dual circuit system. Hand brake: spring-action, acting on all wheels of axles 2 to 7.
Driver's cab:	Large-area, all-steel cab with resilient mountings, safety glass windows and full range of instruments.
Electrical system:	24 Volts DC, 2 batteries, lighting to German road vehicle regulations.

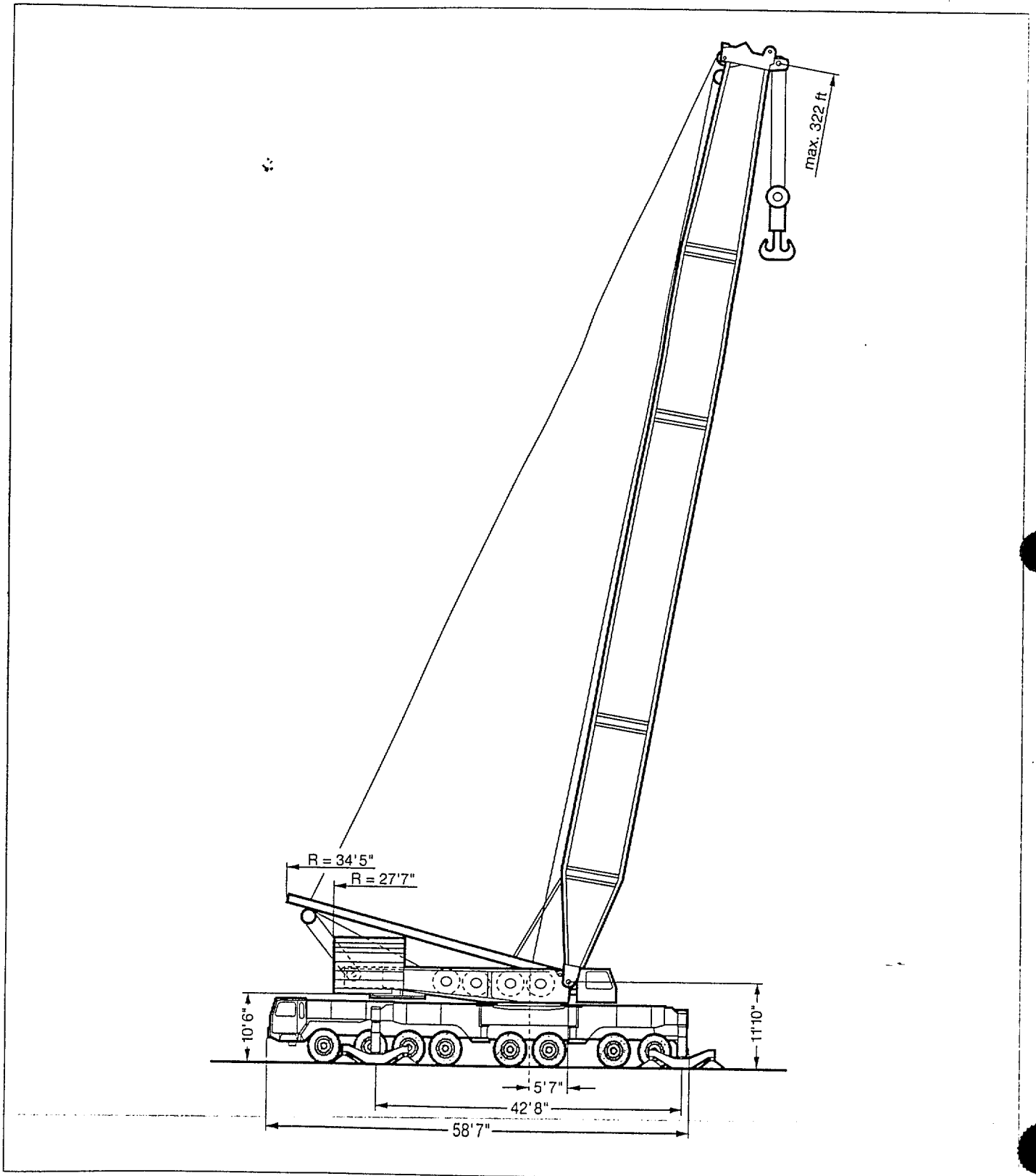
## Crane superstructure.

Frame:	Self-manufactured, torsion resistant, welded construction of high-tensile steel. Connected to chassis by a 3-row roller slewing ring, 360° slewing range.
Engine:	10 cylinder Daimler-Benz Diesel, type OM 423 A-turbo, water cooled, output acc. to DIN 70020 - 300 kW (408 HP) at 2100 min <sup>-1</sup> , max. torque 1216 lbs-ft at 2100 min <sup>-1</sup> . Fuel tank capacity: 177 gallons.
Crane drive:	Hydraulically by pump transfer case and 5 axial piston variable displacement pumps with capacity control; closed hydraulic circuits.
Crane control:	Servo control with electronic synchronizing device on hoisting winches. Energy recycling during lowering of load. All motions controlled independently by joystick selectors.
Winches:	4 winches, hydraulically controlled by axial piston variable displacement pumps and planetary gears. Spring-loaded multi-disc brakes with hydraulic release.
Slewing gears:	Hydraulically controlled by axial piston pump and planetary gear, spring-loaded multi-disc brake with hydraulic release. Infinitely variable slewing speed 0 - 1,2 min <sup>-1</sup> .
Counterweight:	441000 lbs, consisting of: 1 base slab of 35300 lbs, 12 slabs of 22000 lbs each and 4 slabs of 13200 lbs each and 4 slabs of 22000 lbs.
Operator's cab:	Sheet steel design with safety glazing, movable sideward and inclinable to the rear; including operating equipment and check instruments.
Safety devices:	Electronic load-moment limiter, hoist limit switch, safety valves to protect hydraulic system against pipe and hose fracture.
Electrical system:	24 V DC - 2 batteries, 143 Ah each.

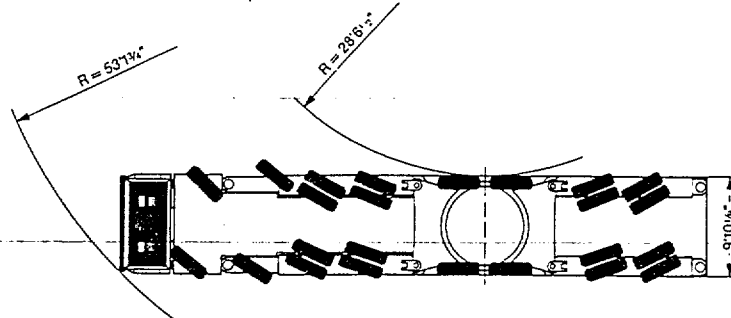
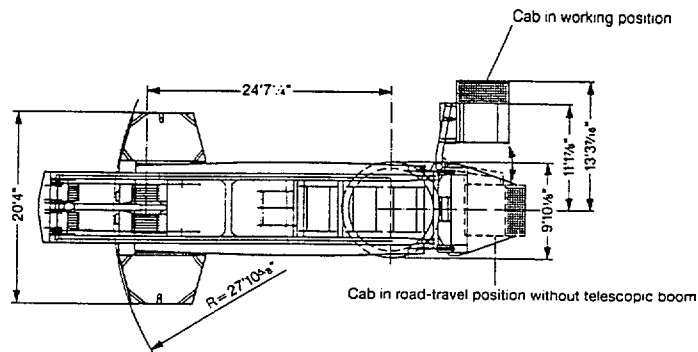
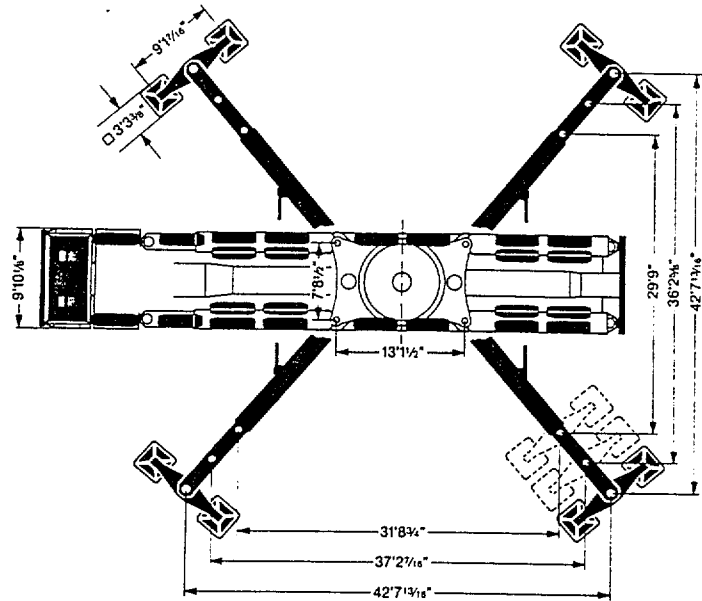
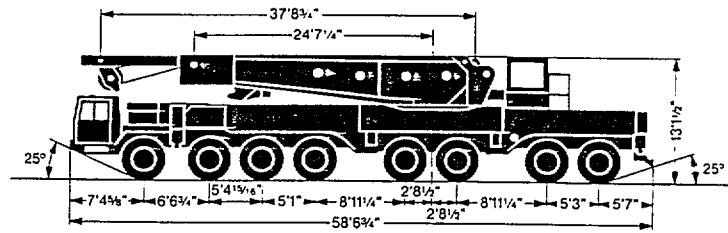
## Boom configurations.

Heavy-weight design: SL - SLN

# Dimensions.



# Dimensions.



# Weights.







Axle	1	2	3	4	5	6	7	8	Total weight
lbs	26455	26455	26455	26455	26455	26455	26455	26455	211641






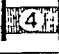

Load (kips)	No. of sheaves	No. of lines	Weight lbs
772	15	31	11023
518	9	19	8818
205	3	7	4409
90	1	3	2646
32	-	1	1322

# Working speeds.



	1	2	3	4	5	R	
mph	9.1	12.8	20.3	30.2	42	9	18 %
mph 	4.7	7	11.2	16.4	23.2	5	34 %
	14.00 R 25						

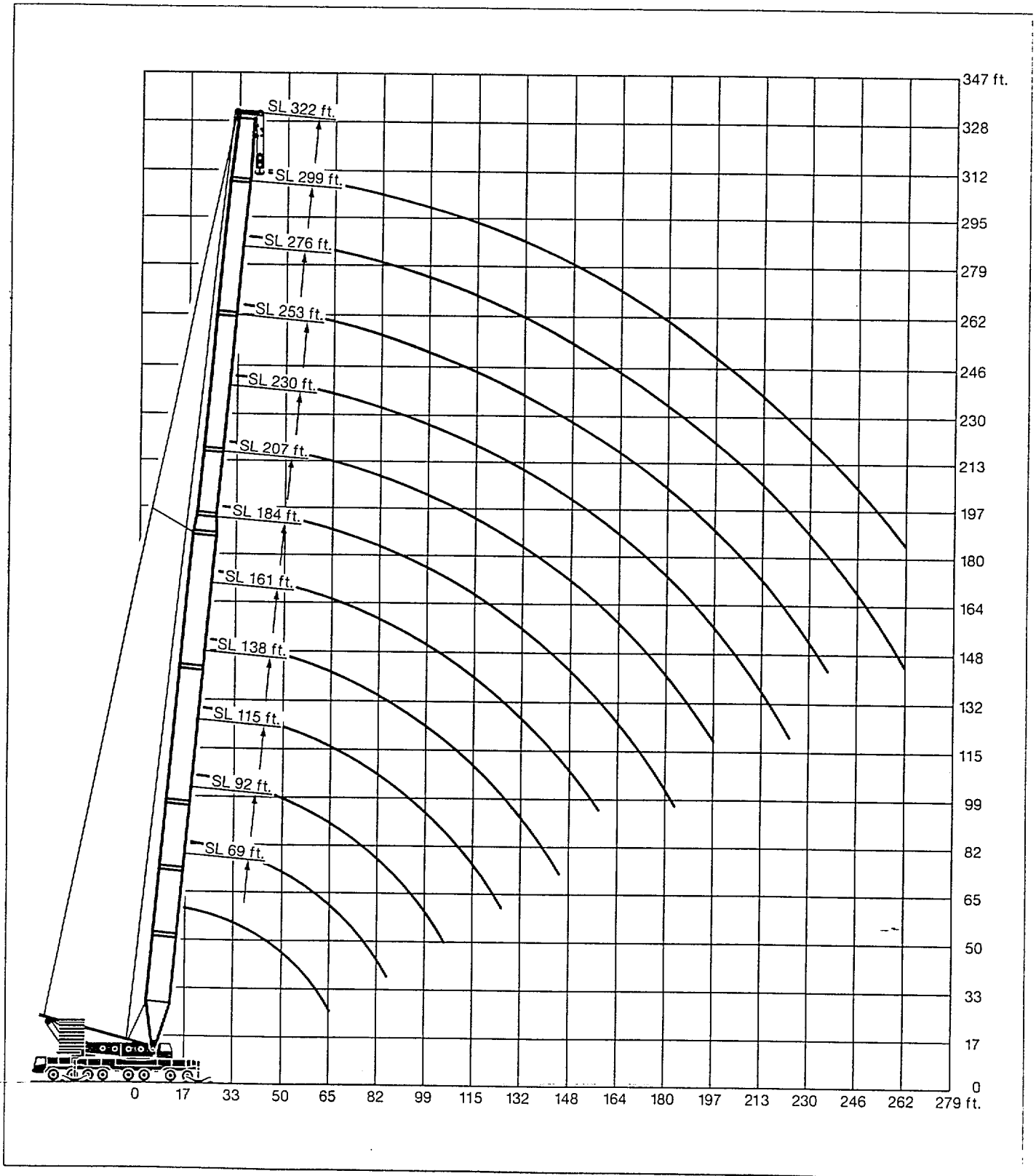


Drive	ininitely variable	Rope diameter / Rope length	Max. single line pull
	0 - 425 ft/min single line	1 1/8" / 1970'	31460 lbs
	0 - 475 ft/min single line	1" / 3500'	31460 lbs
	0 - 475 ft/min single line	1 1/8" / 2950'	31460 lbs
	2 x 165 ft/min single line	1 1/8" / 820'	40451 lbs
	0 - 1,2 min <sup>-1</sup>		

<sup>1)</sup> Luffing jib gear

<sup>2)</sup> Luffing gear

# Lifting heights at SL boom.



# Lifting capacities at SL boom.



69 ft - 322 ft



360°



441000 lbs

85%

ft	69 ft	92 ft	115 ft	138 ft	161 ft	184 ft	207 ft	230 ft	253 ft	276 ft	299 ft	322 ft	ft
14	1400												14
15	1316												15
16	1242												16
17	1181												17
18	1129												18
19	1078	942											19
20	1029	915	893										20
21	988	892	878										21
22	938	870	863										22
23	884	848	848										23
24	865	835	830	805									24
26	825	807	793	776									26
28	787	772	757	741	706								28
30	751	736	722	707	682	606	518						30
32	719	704	691	676	664	604	505						32
34	683	669	656	642	637	585	491	425	362				34
36	644	632	619	605	604	554	476	411	352				36
38	612	599	588	574	573	540	463	397	343				38
40	581	569	558	545	544	525	450	385	334	305	279	255	40
45	516	506	496	484	482	474	418	359	312	285	265	240	45
50	464	454	445	434	432	427	388	335	293	269	248	226	50
55	420	411	402	392	390	385	361	312	274	255	234	213	55
60	382	374	366	356	354	349	335	292	256	240	221	202	60
65	346	343	335	326	323	319	311	274	240	229	210	193	65
70		317	309	300	298	294	288	257	226	218	200	183	70
75		294	286	278	275	272	267	240	213	208	191	174	75
80		272	266	257	255	252	247	225	201	199	182	165	80
85		252	248	240	237	234	230	212	190	187	173	158	85
90			233	224	222	219	215	197	179	176	165	149	90
95			218	210	208	205	201	183	169	166	153	142	95
100			204	197	195	192	188	171	160	157	150	136	100
105				186	183	180	176	160	150	148	143	129	105
110				176	173	170	166	151	143	141	138	121	110
115				166	163	160	157	143	137	134	132	115	115
120				156	154	152	148	135	131	128	126	109	120
125					146	144	140	128	123	121	121	104	125
130					139	136	133	123	118	117	115	100	130
135					131	130	126	117	112	112	108	96	135
140					123	123	120	112	107	106	102	91.5	140
150						112	108	101	96.5	94.5	90	82.5	150
160							98	91.5	87.5	84.5	79.5	74	160
170							89	82.5	79	75.5	70.5	64.5	170
180							78.5	74.5	71.5	67.5	62.5	56.6	180
190								67.5	64	60.5	55.2	49.3	190
200									57.8	54	48.5	42.6	200
210									52	48.2	42.5	36.5	210
220									45.3	42.9	37.1	30.9	220
230										38.1	32.2	25.4	230
240											27.5	20.4	240
250											23	15.6	250
260											18.2	8.9	260
ft/s*	29												ft/s*

Lifting capacities above 849 kips only with special equipment over rear (special boom head and another support base).

TAB 49191

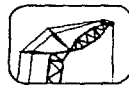
\* Permissible wind speed

Lifting capacities are given in kips (1,000 lbs).

# Lifting capacities at SLN boom/jib combination.



87°  
92 ft - 161 ft



69 ft - 299 ft



360°



299800 lbs



85%

ft	92 ft										115 ft										ft			
	69 ft	92 ft	115 ft	138 ft	161 ft	184 ft	207 ft	230 ft	253 ft	276 ft	299 ft	69 ft	92 ft	115 ft	138 ft	161 ft	184 ft	207 ft	230 ft	253 ft		276 ft	299 ft	
40	315																						40	
45	315																							45
50	315	304										314	289											50
55	315	297	280	235								310	282	264	224									55
60	313	289	268	231	196							302	275	254	220	188								60
65	301	282	260	227	192							294	268	247	215	185								65
70	274	272	254	222	188	158						277	262	240	211	181	154							70
75	230	254	244	218	184	155	133					241	252	234	206	177	151	129						75
80		233	231	213	180	152	131	107				238	226	202	174	148	127	104						80
85		215	213	209	177	149	129	105				219	217	198	170	145	125	103						85
90		199	198	196	173	146	126	103	82.5			202	202	193	167	143	122	101	81.5					90
95		176	184	182	169	143	124	101	81	69.5		183	188	185	163	140	120	99.5	80	68.5				95
100			172	170	165	140	121	99.5	79.5	68.5	59.3		175	174	159	137	118	97.5	79	67.5	57.4			100
105			161	160	161	138	119	97.5	78	67	58.3		164	163	156	134	115	96	77.5	66.5	56.4			105
110			152	150	152	135	117	96	76.5	66	57.2		154	153	151	131	113	94.5	76.5	65.5	55.4			110
115			139	142	143	132	115	94.5	75	64.5	56.2		144	144	144	128	111	93	75	64	54.3			115
120			123	134	135	129	113	93	73.5	63.5	55.1		131	136	136	126	109	91.5	74	63	53.4			120
125				127	128	125	111	91	72	62	54		129	129	128	123	107	90	72.5	62	52.5			125
130				118	121	119	108	89.5	71	61	53		122	122	120	105	88.5	71.5	61	51.4				130
135				107	115	113	106	88	69.5	59.8	51.9		112	116	116	103	87	70.5	59.9	50.4				135
140				94.5	110	108	104	86.5	68	58.8	50.9		100	110	110	101	85	69	58.8	49.5				140
150					98	97.5	83	66	56.7	49.1				98.5	101	97	82	67	56.9	47.7				150
160						89.5	89	80.5	64	54.6	47.4					91.5	92	79.5	65.5	55	46			160
170						82	81.5	77.5	62.5	52.5	45.9					84	84	76.5	63.5	53.1	44.4			170
180						68	75.5	72.5	60.5	51.3	44.3					71.5	77.5	74	62	51.6	42.8			180
190						68	68	67.5	59.1	50.1	43					71	69.5	60.5	50.2	41.5				190
200							58.9	62.5	57.7	48.9	42					63.5	64.5	58.8	48.9	40.4				200
210								57.9	56.3	47.6	41						59.5	57.3	47.5	39.4				210
220								49.3	53.1	46.5	40						52.6	55.1	46.3	38.3				220
230								48.8	45.4	39								51.8	45.2	37.3				230
240									43.3	44.4	38								46.4	44.1	36.4			240
250										42.8	37.2									42.9	35.6			250
260											37.1	36.3									38.9	34.9		260
270												31.1	34.8									33.3	34.1	270
280																							31.8	280

TAB 49193.1

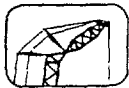
ft	138 ft										161 ft										ft			
	69 ft	92 ft	115 ft	138 ft	161 ft	184 ft	207 ft	230 ft	253 ft	276 ft	299 ft	69 ft	92 ft	115 ft	138 ft	161 ft	184 ft	207 ft	230 ft	253 ft		276 ft	299 ft	
50	298	274																						50
55	292	268	249																					55
60	286	262	241	209																				60
65	280	256	234	204																				65
70	271	249	227	200	174																			70
75	247	243	220	195	171	148																		75
80		236	213	191	167	145	123	102																80
85		223	207	187	164	142	121	101																85
90		206	202	183	160	139	119	99	80.5															90
95		189	192	179	157	137	116	97.5	79.5	68														95
100			167	179	173	154	134	114	96	78.5	67	55.5												100
105				167	164	150	131	112	94.5	77	66	54.6												105
110				157	154	147	128	109	93	76	65	53.6												110
115				148	145	142	125	107	91.5	75	64	52.7												115
120				136	137	137	122	105	90	74	63	51.8												120
125					130	129	120	103	88.5	73	62	50.9												125
130					123	123	117	101	87	72.5	61	49.9												130
135					113	117	114	99	85.5	71.5	59.9	49.1												135
140					103	111	110	97	84	70.5	59	48.2												140
150						100	101	93.5	81.5	68.5	57.2	46.5												150
160							92	89.5	78.5	67	55.5	44.8												160
170							84.5	84.5	76	65	53.8	43.1												170
180							74	78	73.5	63.5	52.1	41.4												180
190								71.5	69.5	62	50.5	40.1												190
200								64.5	64.5	60	49.1	39												200
210									59.7	58.4	47.7	38												210
220									54.3	55.5	46.3	36.9												220
230										51.9	45	35.8												230
240										47.1	43.9	34.9												240
250											42.6	34.2												250
260											40	33.5												260
270												34.9	32.8											270
280													31.5											280

TAB 49193.2





187°  
184 ft - 253 ft



69 ft - 299 ft



360°



299800 ft

85%

ft	184 ft										207 ft										ft	
	69 ft	92 ft	115 ft	138 ft	161 ft	184 ft	207 ft	230 ft	253 ft	276 ft	299 ft	92 ft	115 ft	138 ft	161 ft	184 ft	207 ft	230 ft	253 ft	276 ft		299 ft
50	272																					50
55	269	243	215									220										55
60	266	239	209	182								216	192	169								60
65	264	235	202	178								212	186	165								65
70	261	231	196	173	148							208	182	161	139							70
75	252	227	191	169	146	125						204	177	157	136	117						75
80	226	223	186	165	143	122	104					200	173	153	133	115	97.5					80
85	168	219	182	161	140	120	102					196	166	149	130	112	95.5					85
90		207	178	158	137	118	99.5	84	68			192	165	148	127	110	93.5	79				90
95		195	174	155	135	116	97.5	82.5	66.5	58		188	162	143	125	108	92	77.5	63	54.7		95
100		179	171	151	132	114	96	81	65	56.6	48.2	180	158	140	122	106	90	76	62	53.7		100
105			169	149	130	112	94.5	79.5	64	55.5	47		155	138	120	104	89	75	61	52.8	44.6	105
110			161	146	127	110	93	78.5	63	54.4	45.9		153	135	117	102	87	73.5	59.8	51.8	43.8	110
115			152	144	125	108	91.5	77	62	53.4	45		150	132	115	100	86	72.5	58.9	51	43	115
120			143	140	123	107	90	76	61.5	52.6	44		145	130	113	98.5	84.5	71	58	50.2	42.3	120
125				133	120	105	89	75	60.5	51.9	43.1			128	111	97	83	70	57.1	49.4	41.5	125
130				126	118	103	87.5	74	59.8	51.1	42.4			126	109	95.5	82	69	56.2	48.7	40.9	130
135				117	115	102	86.5	73	58.9	50.4	41.6			120	107	93.5	80.5	68	55.5	48	40.3	135
140				108	112	100	85.5	72	58.1	49.6	40.9			112	105	92	79.5	67	54.7	47.3	39.6	140
150					104	97	83.5	70	56.7	48.3	39.5			101	89	77	65	53.3	46	38.4	150	
160					92	92.5	81.5	68	55.5	47	38.3				94.5	86	74.5	63.5	51.9	44.7	37.2	160
170					75.5	85	79	66.5	54.5	45.7	37.2				80	83	72.5	61.5	50.7	43.4	36.1	170
180						77	77	65	53.4	44.8	36.2					79	70.5	60	49.4	42.3	35.2	180
190						72	72	63.5	52.4	43.9	35.4						68	58.4	48.1	41.2	34.2	190
200						66	66	62	51.3	43	34.7						64.5	56.8	47	40.2	33.3	200
210								60	50.2	42.2	34.1							55.3	46	39.2	32.5	210
220									55.6	49.2	41.3	33.5						53.7	44.9	38.2	31.7	220
230									50.3	48.1	40.4	32.9						49.9	43.7	37.3	30.8	230
240										46.5	39.5	32.3							42.7	36.4	30	240
250											38.6	31.7								35.3	29.2	250
260												37.8	31.1							34.3	28.3	260
270													35.6	30.5						33.5	27.5	270
280																					28.7	280
290																					25.9	290
300																					25.1	300

TAB 49193.3

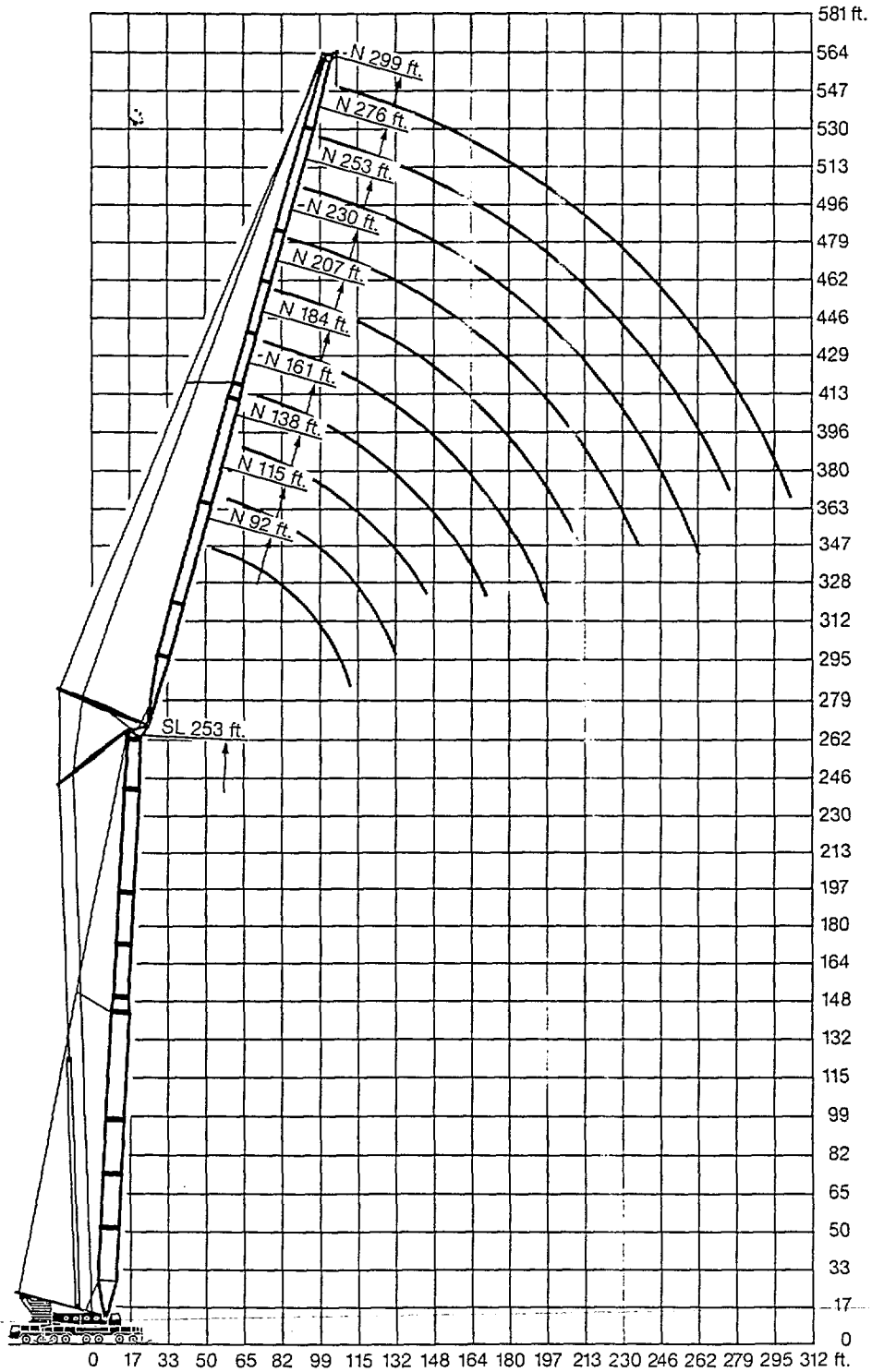
ft	230 ft <sup>1)</sup>										253 ft <sup>2)</sup>										ft			
	92 ft	115 ft	138 ft	161 ft	184 ft	207 ft	230 ft	253 ft	276 ft	299 ft	92 ft	115 ft	138 ft	161 ft	184 ft	207 ft	230 ft	253 ft	276 ft	299 ft				
55	198																					55		
60	194	175											182									60		
65	190	171											176	157								65		
70	188	167	148										172	151								70		
75	182	163	145	126	110								168	147	131							75		
80	178	159	141	123	107	91							165	144	128	114	98					80		
85	174	156	137	120	105	89.5							162	140	125	111	95.5	83				85		
90	170	152	135	117	103	88	74.5						159	137	122	108	93.5	81				90		
95	166	149	132	115	100	86	73	59.5					156	135	120	106	91.5	79.5	66.5			95		
100	162	145	129	112	98.5	84.5	72	58.6	50.7				154	132	118	104	90	78	65	53.6		100		
105		142	126	110	96.5	83	70.5	57.7	50	42.2			152	130	116	101	88	76.5	64	52.6	44.9	105		
110		139	123	107	94.5	81.5	69	56.7	49.2	41.6	148		148	126	112	97.5	85	73.5	61.5	50.7	43.2	110		
115		136	121	105	92.5	80	68	55.7	48.5	41.1			124	110	95.5	83.5	72.5	60.5	49.9	42.4	36.2	115		
120		133	118	103	91	79	66.5	54.8	47.7	40.5			123	108	94	82	71	59.7	49.2	41.7	35.7	120		
125		130	116	101	89	77.5	65.5	53.8	47	40			121	106	92	80.5	70	58.6	48.5	41	35.1	125		
130		127	113	99	87.5	76	64	52.9	46.3	39.4			119	104	90.5	79	69	57.7	47.7	40.4	34.6	130		
135			111	97	85.5	75	63	52.1	45.6	38.9				102	89	78	68	56.9	47	39.8	34	135		
140				108	95	84	73.5	62	51.4	45	38.3				101	87.5	76.5	67	56	46.2	39.1	140		
150					91.5	81	71	60.5	49.9	43.7	37.2					84.5	74	65	54.5	45	38	150		
160						87	78	68.5	58.5	48.5	42.5	36.2				81.5	71.5	63	53	43.9	37	160		
170						82	75	66	56.6	47	41.2	35.2					78.5	69.5	61	51.5	42.8	36	170	
180							71	63.5	54.9	45.6	40	34.1						67	59.5	50	41.6	34.9	180	
190								61.5	53.3	44.2	38.7	33.1						65	57.8	48.5	40.5	33.9	190	
200								59	51.6	42.8	37.5	32.1							56	47.1	39.5	33	27.6	200
210									50	41.7	36.4	31								45.9	38.5	32.1	26.7	210
220										48.3	40.6	35.4	30							44.7	37.6	31.3	25.9	220
230										46.6	39.5	34.4	28.9							43.5	36.6	30.5	25.1	230
240											38.4	33.3	27.9								35.6	29.6	24.3	240
250												32.3	26.8								34.7	28.8	23.5	250
260													31.2	25.8							33.7	28	22.7	260
270														30.2	24.7							27.2	21.9	270
280															23.6								21.1	280
290																22.6							20.3	290
300																	21.5						19.6	300

TAB 49193.4



with 352700 lbs  
with 441000 lbs

# Lifting heights at SLN boom/jib combination.

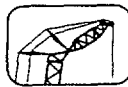


SL boom: 87°

# Lifting capacities at SLN boom/jib combination.



67°  
92 ft - 161 ft



69 ft - 299 ft



360°



441000 lbs

85%

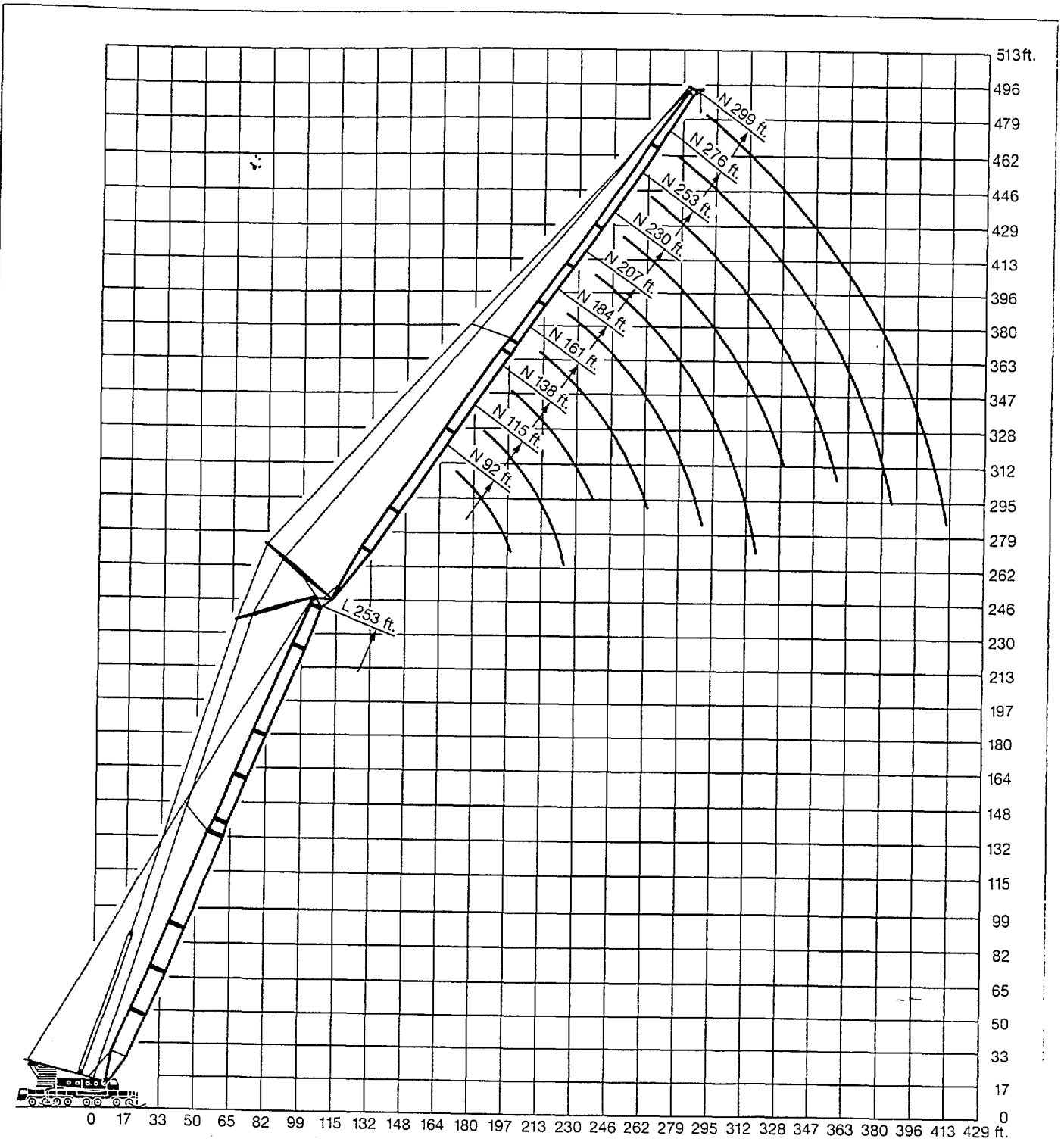
ft	92 ft										115 ft										ft		
	69 ft	92 ft	115 ft	138 ft	161 ft	184 ft	207 ft	230 ft	253 ft	276 ft	299 ft	69 ft	92 ft	115 ft	138 ft	161 ft	184 ft	207 ft	230 ft	253 ft		276 ft	299 ft
95	197																						95
100	187											181											100
105	177	175										171											105
110	168	167										163											110
115		159										155	154										115
120		152	151									148	147										120
125		145	144	142								140	139										125
130		139	138	136								135	133										130
135			133	131								129	128										135
140			127	126								124	123										140
150			118	117	115									114	112								150
160			108	107	104									106	104	103							160
170			101	100	97.5									99	97.5	96							170
180			85	92	89.5	86									91.5	90	89						180
190				85	82	80.5	71.5									84.5	83.5	82.5	69.5				190
200					76	74.5	69.5	58.2								80	79	77.5	68	54.9			200
210						70.5	69	66	57.4	48.1							74.5	73	66.5	54	45		210
220						65.5	64	61.5	56.7	47.2							70	69	65.5	53.2	44.3		220
230							59.6	57.1	54.9	46.4	38.3						65.5	64.5	62	52.5	43.6	35.8	230
240							55.6	53.3	52.2	45.5	37.5						60	57.8	51.7	43	35.2		240
250								49.8	48.7	44.7	36.7						56	53.9	51	42.3	34.6		250
260								46.6	45.6	43.9	36						50.9	50.4	48.6	41.8	34.1		260
270								40.9	42.7	41.9	35.2							47.1	46.8	40.9	33.5		270
280									40	39.5	34.5								43.8	40.1	33		280
290										36.9	33.6								40.9	39	32.4		290
300											34.6	32.6							38.3	36.5	31.9		300
310												32.4	30.7								34.2	31.3	310
320													28.7								32	30.2	320
330														28.8								28.3	330
340																						26.5	340

TAB 49105.1

ft	138 ft										161 ft										ft		
	69 ft	92 ft	115 ft	138 ft	161 ft	184 ft	207 ft	230 ft	253 ft	276 ft	299 ft	69 ft	92 ft	115 ft	138 ft	161 ft	184 ft	207 ft	230 ft	253 ft		276 ft	299 ft
105	165																						105
110	157																						110
115	150																						115
120	143	141																					120
125	137	135																					125
130	131	129																					130
135		124																					135
140		120	118																				140
150		111	109	108																			150
160			101	100	99																		160
170			94.5	93.5	92.5																		170
180				88	86.5	85																	180
190					82.5	81	79.5	77															190
200						76.5	74.5	72	66														200
210							72	70.5	67.5	65	50.7												210
220								68	66.5	63.5	61.5	50											220
230									63	60	58.4	49.3	40.9										230
240										56.9	55.1	48.5	40.4	32.9									240
250											53.9	52.1	47.8	39.9	32.8								250
260												51.3	49.4	46.5	39.5	32.3							260
270													46.8	44.3	39	31.9							270
280													44.6	42	38.5	31.6							280
290																39.8	37.8	31.3					290
300																	37.9	36.2	30.9				300
310																							310
320																							320
330																							330
340																							340
350																							350
360																							360

TAB 49105.2

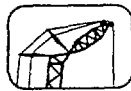
# Lifting heights at SLN boom/jib combination.



SL boom: 67°



67°  
184 ft - 253 ft



69 ft - 299 ft



360°



441000 ft

85%

ft	184 ft											207 ft								ft			
	69 ft	92 ft	115 ft	138 ft	161 ft	184 ft	207 ft	230 ft	253 ft	276 ft	299 ft	92 ft	115 ft	138 ft	161 ft	184 ft	207 ft	230 ft	253 ft		276 ft	299 ft	
125	128																					125	
130	123																						130
135	118																						135
140	113																						140
150		103																					150
160		95.5	93.5								90												160
170		89.5	87								84												170
180			81.5	79.5							79												180
190			77	74.5	72.5						72	69	67										190
200				70	68	65.5						64.5	62.5	61									200
210					64	61.5	59.4					60.5	58.6	57.1	54								210
220					60	57.8	55.8					57.5	55.3	53.7	50.7								220
230					57	54.5	52.5	49.9						52.2	50.5	47.7	43.5						230
240						51.5	49.5	46.9	42.5					49.4	47.7	44.8	41.7	35.9					240
250						48.8	46.7	44.1	41.6	34.4				45	42.2	39.4	34.6	28.9					250
260						46.5	44.2	41.6	39.7	33.8				42.7	39.8	37	33.4	28					260
270							42	39.3	37.6	33.2	26.4						37.6	34.8	32.2	27.2	21.9		270
280							40	37.2	35.4	32.3	26						35.7	32.8	30.8	26.3	21.2		280
290								35.2	33.4	31	25.6							31	29.1	25.4	20.5		290
300								33.5	31.6	29.1	25.2							29.3	27.3	24.5	20		300
310									29.9	27.3	24.5							27.8	25.7	23	19.3		310
320									28.3	25.7	23.2								24.2	21.4	18.7		320
330										24.2	21.6								22.8	19.9	18		330
340										22.8	20.2								21.7	18.5	16.8		340
350										21.7	18.8									17.3	15.8		350
360											17.6										14.9		360
370											16.6										14.1		370
380											15.9										13.5		380

TAB 49105.3

ft	230 ft <sup>1)</sup>											253 ft <sup>2)</sup>								ft				
	92 ft	115 ft	138 ft	161 ft	184 ft	207 ft	230 ft	253 ft	276 ft	299 ft	92 ft	115 ft	138 ft	161 ft	184 ft	207 ft	230 ft	253 ft	276 ft		299 ft			
160	82																						160	
170	78																							170
180	71.5	69										65.5												180
190		65	62.5									61.5	59.4											190
200		61	58.5	55.5									55.6	52.4										200
210			54.9	51.9	49.8								52.3	49	47									210
220			51.8	48.8	47								49.5	48.1	44									220
230			49	45.9	44.3	40.9								43.5	41.3	38.7								230
240				43.3	41.6	38.6	33.7								38.8	36.2	34.2							240
250					39.2	36.2	32	27.7							36.6	33.9	31.8	28.7						250
260					36.7	34	30.3	26.1							34.8	31.9	29.7	26.5						260
270					34.1	31.9	28.6	24.5	21.2						30	27.8	24.6	21.1						270
280						29.8	26.8	22.9	20	16.6					28.3	26	22.7	19.1	17					280
290						27.6	25.1	21.3	18.9	15.7						24.3	20.9	17.2	15.6	11.8				290
300						25.3	23.4	19.8	17.7	14.8						22.8	19.3	15.8	14.5	11.2				300
310							21.7	18.2	16.5	14						21.6	17.8	14.8	13.6	10.7				310
320								19.9	16.8	15.3	13.1						16.6	13.9	12.7	10.1				320
330									15.7	14.2	12.2							13.1	11.9	9.5				330
340									14.5	13.1	11.3							12.5	11.1	8.9				340
350										11.9	10.5							11.9	10.5	8.3				350
360											10.8	9.6							9.9	7.7				360
370												8.7							9.3	7.1				370
380													7.8						8.9	6.5				380
390														6.9					6					390
400																				5.4				400

TAB 49105.4