

SPYDERCRANE URW376 MINI-CRAWLER CRANE

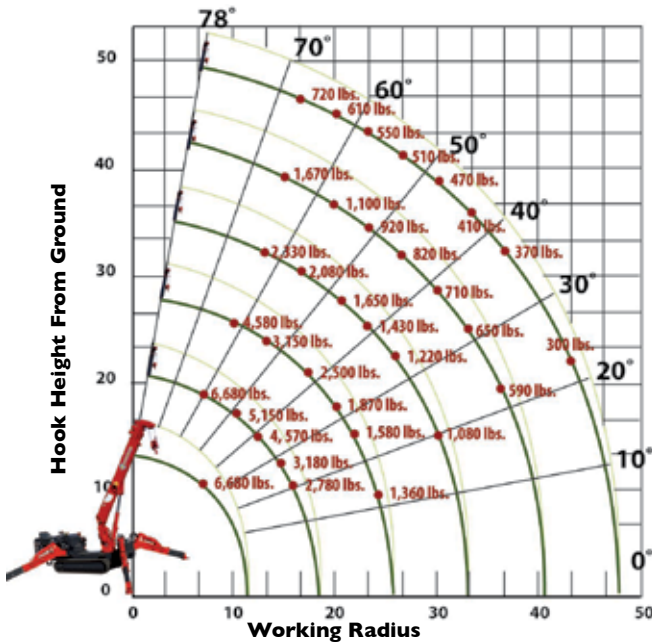
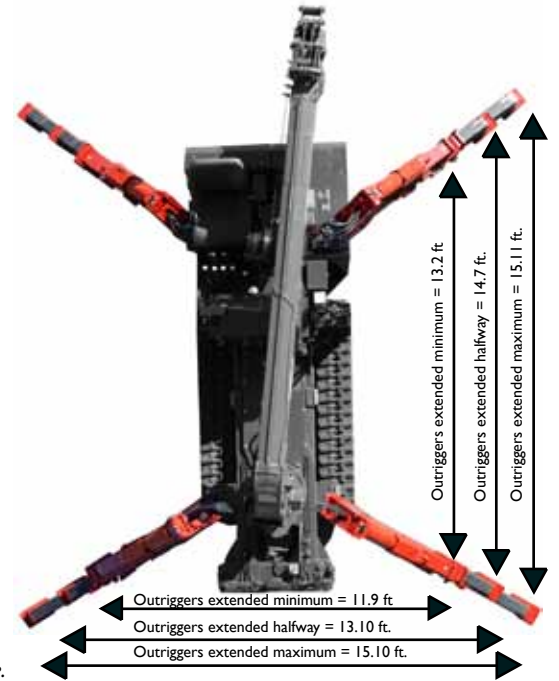
TECHNICAL SPECIFICATIONS



ASME/B-30.5 Compliant

DESIGNED TO GO WHERE OTHER CRANES CAN'T

Engineered and manufactured by the Japanese crane industry leader FURUKAWA UNIC Corp., the SPYDERCRANE offers versatility, maneuverability and lifting capacity in a compact design which enables you to quickly, safely and easily meet all of your restricted and confined-area lifting requirements. SPYDERCRANES are distributed in North America by SPYDERCRANE Sales, LLC. of Arizona. Each unit is backed by our 20-plus years of industry and application experience, complete inventory of genuine spare parts and accessories, and superior local service support.



LOAD CHART *Lifting capacity varies depending on outrigger configuration and boom length and angle.*

ALL BOOMS RETRACTED AND SECOND STAGE EXTENDED											
Working Radius (ft.)	6.5	8.0	10.0	11.0	13.0	15.0	17.0	18.6			
Outriggers Maximum (lbs.)	6,680	6,680	5,150	4,570	3,760	3,180	2,780	2,420			
Outriggers Halfway (lbs.)	6,680	6,680	5,100	4,520	3,600	2,750	2,100	1,760			
Outriggers Minimum (lbs.)	6,680	6,680	4,730	3,700	2,550	2,000	1,500	1,100			
THIRD STAGE EXTENDED											
Working Radius (ft.)	8.5	10.0	11.0	13.0	15.0	16.0	18.0	20.0	23.0	25.8	
Outriggers Maximum (lbs.)	5,000	4,580	3,950	3,150	2,710	2,500	2,160	1,870	1,580	1,360	
Outriggers Halfway (lbs.)	5,000	4,500	3,900	3,150	2,570	2,350	1,870	1,410	1,050	880	
Outriggers Minimum (lbs.)	4,880	4,500	3,800	2,770	2,250	2,000	1,500	1,130	720	480	
FOURTH STAGE EXTENDED											
Working Radius (ft.)	13.0	15.0	16.0	20.0	23.0	26.0	30.0	33.0			
Outriggers Maximum (lbs.)	2,330	2,080	1,960	1,650	1,430	1,220	1,080	900			
Outriggers Halfway (lbs.)	2,330	2,060	1,940	1,500	1,170	910	650	500			
Outriggers Minimum (lbs.)	2,330	1,810	1,540	1,050	740	560	330	260			
FIFTH STAGE EXTENDED											
Working Radius (ft.)	15.0	16.0	20.0	23.0	26.0	30.0	33.0	36.0	40.2		
Outriggers Maximum (lbs.)	1,670	1,480	1,100	920	820	710	650	590	570		
Outriggers Halfway (lbs.)	1,670	1,480	1,070	920	780	650	550	440	350		
Outriggers Minimum (lbs.)	1,670	1,480	910	610	470	340	260	200	80		
SIXTH STAGE EXTENDED											
Working Radius (ft.)	16.0	18.0	20.0	23.0	26.0	30.0	33.0	36.0	39.0	43.0	47.3
Outriggers Maximum (lbs.)	720	660	610	550	510	450	410	370	350	300	280
Outriggers Halfway (lbs.)	720	660	610	550	510	450	410	330	270	190	150
Outriggers Minimum (lbs.)	730	670	620	550	450	290	240	170	130	110	80



URW376 MINI-CRAWLER CRANE

		URW376C2URS	URW376C2UMRS				
Crane capacity	Capacity:	6,680 lbs. @ 8.20 ft.					
Max working radius	Maximum:	2.03 to 47.40 ft.					
Max lifting height	Approximate:	49 ft.					
Turning radius (ft.)	Minimum:	TURNS WITHIN IT'S DIMENSIONS					
Dimensions (ft.)	Folded: (w x h x l)	4.24 x 5.91 x 14.24					
Weight	Unladen:	8488 lbs.	8760 lbs.				
Outrigger point loading	Maximum:	Specific point landing available upon request					
Winch speed	Approximate:	Single line speed: 223.1 ft./minute at 4th layer Hook Speed: 55.77 ft./min at 4th layer with 4-part line	Diesel				
			Electric				
			Single line speed: 223.1 ft./minute at 4th layer Hook Speed: 55.77 ft./min at 4th layer with 4-part line				
Telescopic system	Boom Length:	11.9 to 47.93 ft.					
	Hydraulic Telescopic with holding valves:	36 ft./23 sec	<table border="1"> <tr> <td>Diesel</td> <td>Electric</td> </tr> <tr> <td colspan="2">36 ft./23 sec</td> </tr> </table>	Diesel	Electric	36 ft./23 sec	
	Diesel	Electric					
36 ft./23 sec							
Boom type:	6- section hydraulicity telescoping boom, hexagonal box construction						
Boom lift speed	Hydraulic with holding valves	0° - 80° / 10 sec	Diesel				
			Electric				
			0° - 80° / 10 sec				
Swing rotation	Worm Drive	360 degrees continuous					
Traction System	Travel Speed:	Two Speed	Low: 1.86 mph High: 3.92 mph				
	Gradability:	23°					
	Track ground pressure:	5.22 psi					
Engine / Motor	Manufacturer:	Mitsubishi	Mitsubishi				
	Tank Capacity:	10.57 gal	10.57 gal DNA				
	Maximum output:	24.5 HP	Diesel				
			Electric				
			24.5 HP	10 HP / AC 208-240 V/3 Phase/60HZ			
Starting method:	Electric start as standard						
	Type:	Diesel	Diesel & Electric				
Standard and safety equipment	Full-function radio remote, centrally loacted infinite variable controls, onboard self-diagnostic computer system, hexagnol boom, anti-two block system, automatic hook stow system, hook safety latch, over-winding prevention device and alarm, working area limitation, minimum wire rope automatic stop, hydraulic circuit pressure relief valve and bubble-stlye level for outrigger leveling, Rated Capacity Indicator (L.M.I), Interlock Monitoring Outrigger and Boom System.						

Product specifications are subject to change without notice. No specific training or license is required to operate the SPYDERCRANE in most areas, but operators are responsible for knowing and meeting all local safety requirements and regulations.