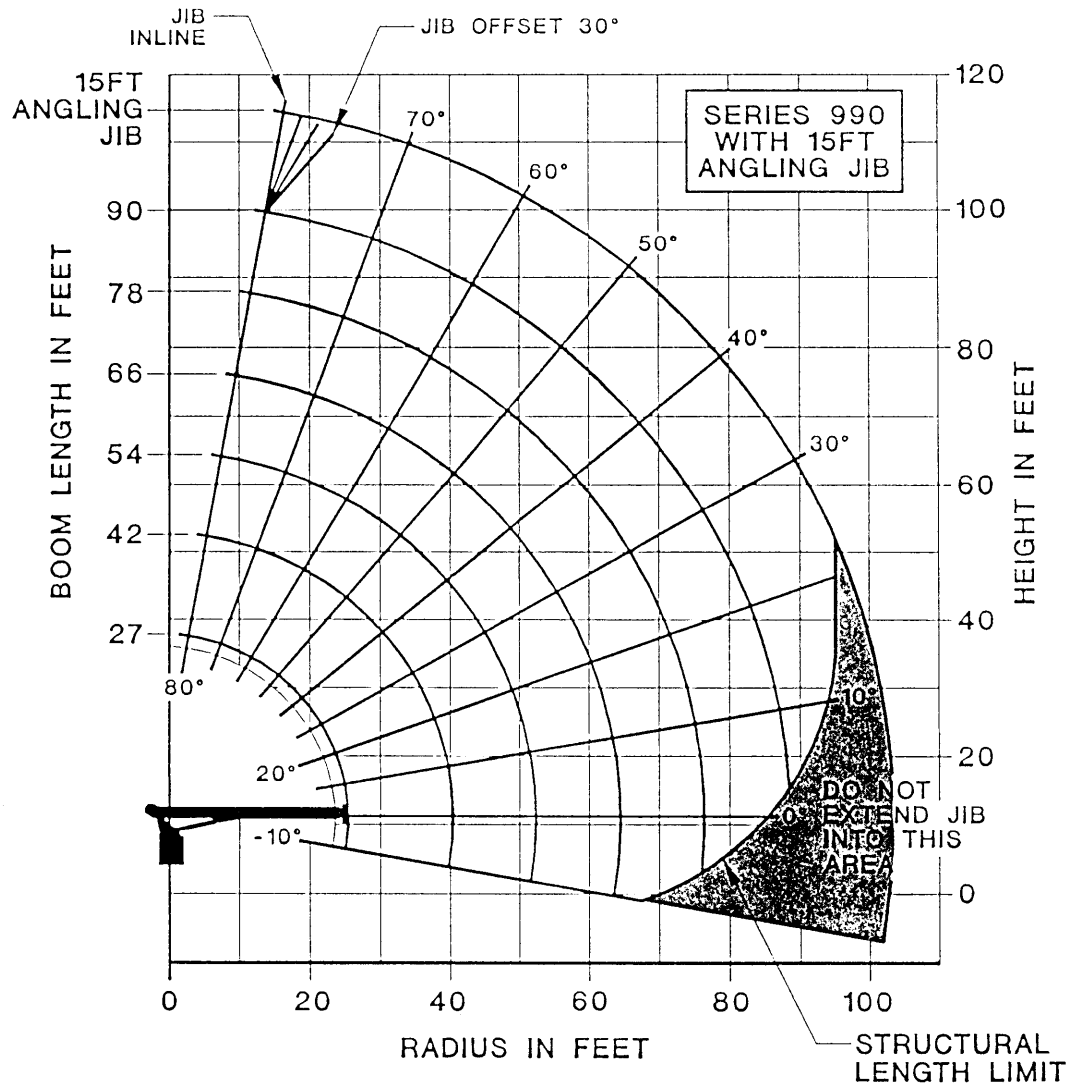


# NATIONAL CRANE CORPORATION

876646



**NOTE:**

1. OPERATE WITH JIB BY RADIUS WHEN MAIN BOOM IS FULLY EXTENDED. IF NECESSARY INCREASE BOOM ANGLE TO MAINTAIN LOADED RADIUS.
2. OPERATE WITH JIB BY BOOM ANGLE WHEN MAIN BOOM IS NOT FULLY EXTENDED. DO NOT EXCEED RATED JIB CAPACITIES AT ANY REDUCED BOOM LENGTHS.

LMI OPERATING CODE SWITCH	
SWITCH POSITION (REF #17)	OPERATING MODE
01	MAIN BOOM - NO JIB STOWED
02	MAIN BOOM - JIB STOWED
06	15FT ANGLING JIB 0° OFFSET
07	15FT ANGLING JIB 10° OFFSET
08	15FT ANGLING JIB 20° OFFSET
09	15FT ANGLING JIB 30° OFFSET
11	MAN BASKET ON MAIN BOOM
13	MAN BASKET ON 15FT ANGLING JIB 0° OFFSET
14	MAN BASKET ON 15FT ANGLING JIB 10° OFFSET
15	MAN BASKET ON 15FT ANGLING JIB 20° OFFSET
16	MAN BASKET ON 15FT ANGLING JIB 30° OFFSET

## LOAD RATINGS

LOAD RADIUS (FEET)	LOADED BOOM ANGLE	27FT BOOM (LBS)	LOADED BOOM ANGLE	42FT BOOM (LBS)	LOADED BOOM ANGLE	54FT BOOM (LBS)	LOADED BOOM ANGLE	66FT BOOM (LBS)	LOADED BOOM ANGLE	78FT BOOM (LBS)	LOADED BOOM ANGLE	90FT BOOM (LBS)
5	79	46,000										
8	72	32,300										
10	67	26,700	76.5	23,500	80	22,000						
12	62	22,800	73.5	20,500	77.5	18,800						
14	57	19,800	70.5	17,700	75.5	16,400	79	15,200				
16	51	17,400	67.5	15,700	73.5	14,500	77	13,300	79.5	12,400		
20	37	13,800	61	12,700	68.5	11,700	73	10,800	76.5	10,000	79	9,500
25			52.5	10,100	62.5	9,400	68.5	8,700	72.5	8,000	75.5	7,600
30			43	8,250	56	7,800	63.5	7,100	68.5	6,500	72	6,100
35			30	6,550	49	6,400	58.5	6,000	64.5	5,450	68.5	5,100
40					41	5,400	53	5,100	60	4,650	65	4,400
45					31.5	4,400	47	4,400	55.5	4,000	61.5	3,800
50					17	3,100	40.5	3,650	51	3,500	57.5	3,250
55							32.5	3,000	45.5	3,000	53.5	2,800
60							22	2,250	40	2,500	49	2,400
65									33	2,050	44.5	2,050
70									25	1,550	39.5	1,700
75									11	700	34	1,350
80											27	1,000
85											17	500
	0	6,500	0	3,000	0	1,600	0	700				
ADD TO CAPACITIES WHEN NO JIB STOWED (LBS)		700		400		300		200		200		100

## JIB LOAD RATINGS (SAME CAPACITY FOR ANY OFFSET ANGLE)

LOAD RADIUS (FEET)	LOADED BOOM ANGLE	CAPACITY (LBS)
25	79	6,000 *
30	78.5	5,150
35	75.5	4,300
40	72.5	3,850
45	69.5	3,100
50	66	2,600
55	63	2,300
60	59	2,000
65	55.5	1,600
70	52	1,350
75	47.5	1,050
80	43	850
85	38.5	600
90	32.5	450

\*0° AND 10° JIB  
OFFSET ANGLE ONLY

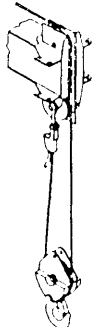
**LOADLINE EQUIPMENT DEDUCT**  
  
 DOWNHAUL WEIGHT = 150  
 ONE SHEAVE BLOCK = 200  
 TWO SHEAVE BLOCK = 355  
 THREE SHEAVE BLOCK = 530

1 PART LINE



MAX. PULL  
7,700 LBS

2 PART LINE



MAX. PULL  
15,400 LBS

3 PART LINE



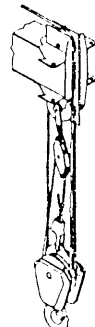
MAX. PULL  
23,100 LBS

4 PART LINE



MAX. PULL  
30,800 LBS

5 PART LINE



MAX. PULL  
38,500 LBS

6 PART LINE



MAX. PULL  
46,000 LBS

# NOTICE

DO NOT DEADHEAD LINE BLOCK AGAINST BOOM TIP WHEN EXTENDING BOOM.

KEEP AT LEAST 3 WRAPS OF LOADLINE ON DRUM AT ALL TIMES.

USE ONLY 9/16" DIAMETER ROTATION RESISTANT CABLE WITH 38,500 LBS BREAKING STRENGTH ON THIS MACHINE.

MAXIMUM CAPACITY WITH "BURST OF SPEED" IS 3,000 LBS.