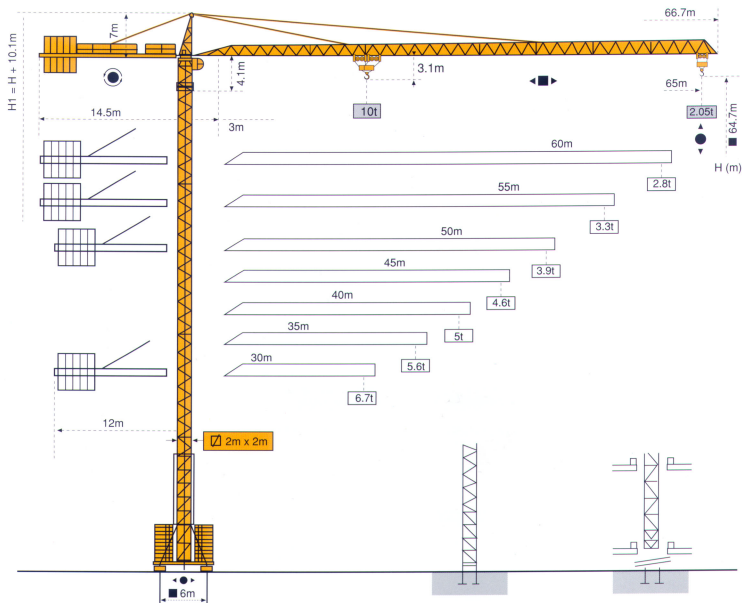
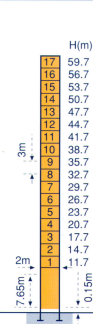


MC 235B



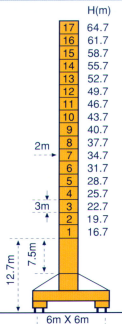
Masts / Reactions

Masts



P20A	
F2	• 140t
F3	• 87t
⊗	70t

2m



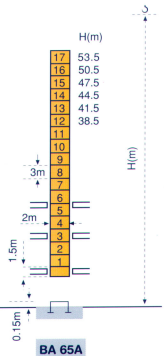
VB 20A	
F1	• 106t
⊗	83t

F = Reactions

- In service
- Out of service
- ⊗ Without load and ballast with longest jib and maximum height

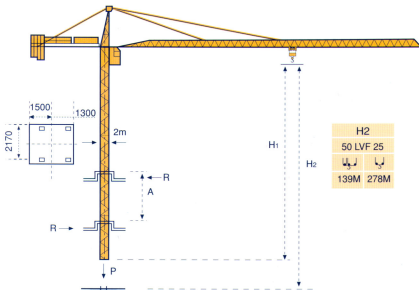
Jib

30m → 65m



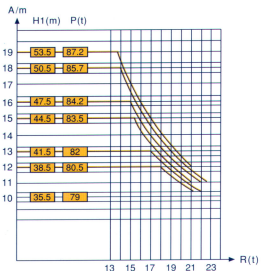
BA 65A	
Please consult us	

Climbing crane

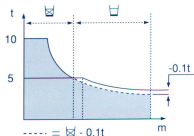
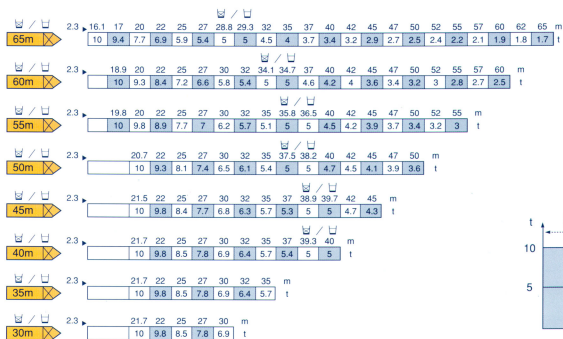
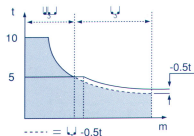
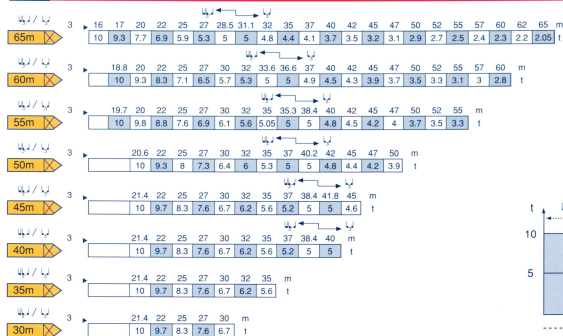


A Distance between collars
P Crane weight (in service)
H1 Crane height
R Horizontal reaction

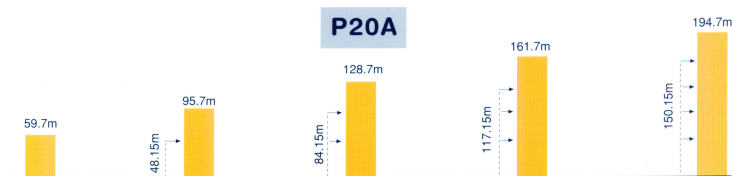
BA 65 A





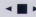



Load diagrams



Anchorage



Mechanisms

		m/min	t	m/min	t	ch-Ps hp	kW	
Hoisting	 50 LVF 25	4 ↓	5	2 ↓	10	50	37	557m
		10 ↓	5	5 ↓	10			
		32.6 ↓	5	16.3 ↓	10			
		44 ↓	3.75	22 ↓	7.5			
		65 ↓	2.5	32.5 ↓	5			
		79 ↓	1.25	39.5 ↓	2.5			
Trolleying	 6 D3 V4	10 - 50 m/min (10t)		100 m/min (5t)		6	4.4	
Slewing	 RCV 185	0 → 0.8 tr/min (rpm)				2 x 9	2 x 6.6	
Travelling	VB 20A  R ≥ 13m RT 544 A1 2V	13.5 - 27				4 x 7	4 x 5.2	
CEI 38  IEC 38		kVA		Generator set				
400V (+6% - 10%) 50Hz		50 LVF : 75 kVA		*				

* Please consult us.

Subject to Modification. This commercial document is not legally binding. For any technical information, please refer to the corresponding instructions.



GROVE

POTAIN 

Manitowoc Crane Group Asia Pte Ltd
Manitowoc Crane Group

26 Benoi Road
Singapore 629 898
Tel: 65-6861 7133
Fax (Admin/Sales) : 65-6862 4040
Fax (Service/Parts) : 65-6862 4142
www.manitowoccrane.com

Copyright. © POTAIN 2004

MC 235B

Ref: 2004.01