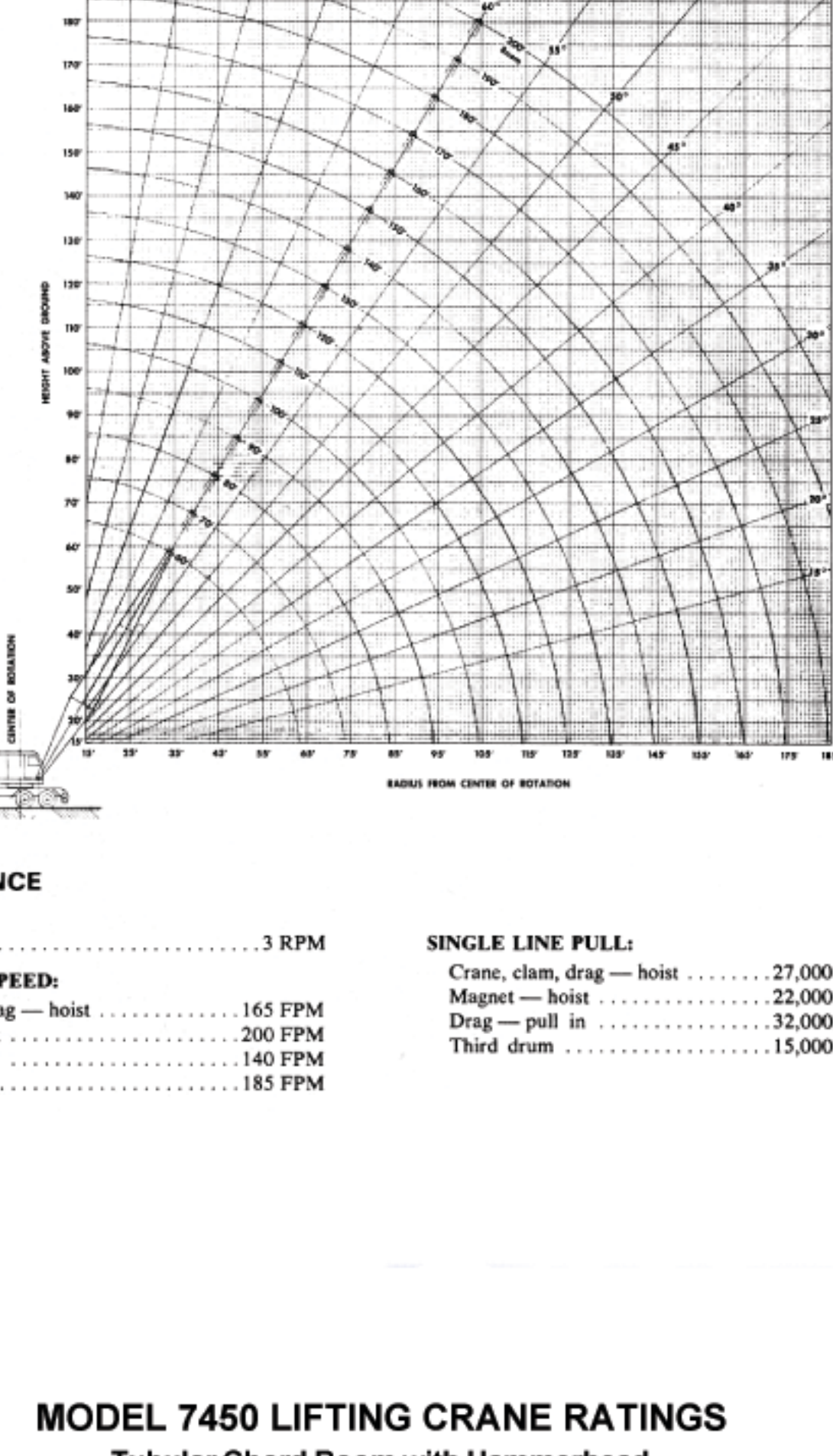


LIFTING CHARTS - Conventional Truck Cranes

AMERICAN MODEL 7450 - 80 TON CAPACITY



PERFORMANCE

SWING SPEED: 3 RPM

SINGLE LINE SPEED:
 Crane, clam, drag — hoist 165 FPM
 Magnet — hoist 200 FPM
 Drag — pull in 140 FPM
 Third drum 185 FPM

SINGLE LINE PULL:

Crane, clam, drag — hoist 27,000 lbs. SLP
 Magnet — hoist 22,000 lbs. SLP
 Drag — pull in 32,000 lbs. SLP
 Third drum 15,000 lbs. SLP

MODEL 7450 LIFTING CRANE RATINGS
 Tubular Chord Boom with Hammerhead

Boom Length	Radius in Feet	Boom Angle Degrees	Free Over Side	Free Over Reef	Outriggers Extended And Set
40	12	81	5700	7400	190,000
40	15	75	35,950	47,100	106,000
40	20	61	27,000	35,300	81,900
40	25	48	16,200	21,400	47,650
40	35	41	17,500	23,000	*48,250
40	40	28	14,700	19,400	*39,800
50	12	83	71,750	96,500	150,000
50	15	78	52,450	69,200	105,000
50	20	73	35,750	46,900	105,800
50	25	67	26,800	35,100	81,700
50	30	62	21,150	28,500	67,950
50	35	54	17,300	22,800	48,050
50	40	46	14,500	19,200	39,600
60	12	83	59,750	78,000	138,250
60	15	82	52,250	69,150	132,600
60	20	77	35,550	46,700	105,600
60	25	72	26,600	34,900	81,500
60	30	66	20,950	27,550	60,500
60	35	61	17,100	22,600	47,850
60	40	52	11,550	15,250	*29,850
60	50	42	10,500	14,200	28,750
60	60	23	8,050	11,100	*22,350
75	15	83	52,050	68,950	132,400
75	20	78	35,250	46,500	105,000
75	25	74	26,400	34,700	81,300
75	30	69	20,750	27,350	60,100
75	35	64	16,200	21,400	47,650
75	40	60	14,100	18,800	39,200
75	50	50	10,300	14,000	28,550
75	60	38	7,850	10,500	22,150
75	70	28	6,150	8,150	17,850
80	15	83	48,500	64,250	125,800
80	20	80	35,150	46,300	105,200
80	25	76	26,200	34,500	81,100

Boom Length	Radius in Feet	Boom Angle Degrees	Free Over Side	Free Over Reef	Outriggers Extended And Set
80	30	72	20,550	27,150	60,100
80	35	67	16,200	21,400	47,650
80	40	64	13,900	18,600	39,000
80	50	56	10,100	13,800	28,350
80	60	47	7,550	10,000	21,550
80	70	36	5,950	8,450	17,700
80	80	20	4,650	6,850	*14,650
90	15	83	44,950	59,500	121,200
90	20	83	34,560	46,100	105,000
90	25	78	26,000	34,300	80,900
90	30	74	20,350	26,950	59,900
90	35	69	16,200	22,000	47,650
90	40	67	13,700	18,400	39,800
90	50	60	9,900	13,600	28,150
90	60	48	7,550	10,000	21,550
90	70	44	5,750	8,250	17,500
90	80	34	4,450	6,650	14,450
90	90	18	3,500	5,400	*12,150
100	15	83	47,250	63,850	115,850
100	20	83	34,750	45,900	104,800
100	25	79	25,800	34,100	80,700
100	30	74	19,250	25,750	60,700
100	35	73	16,300	21,800	47,650
100	40	70	13,500	18,200	39,600
100	50	64	9,700	13,200	27,950
100	60	53	7,250	9,650	21,550
100	70	45	5,550	8,050	17,300
100	80	42	4,250	6,450	14,250
100	90	27	3,250	5,250	*11,550
110	15	83	44,550	60,150	115,850
110	20	83	34,550	45,700	104,800
110	25	79	25,800	34,100	80,700
110	30	74	19,250	25,750	60,700
110	35	73	16,300	21,800	47,650
110	40	70	13,500	18,200	39,600
110	50	64	9,700	13,200	27,950
110	60	53	7,250	9,650	21,550
110	70	45	5,550	8,050	17,300
110	80	42	4,250	6,450	14,250
110	90	27	3,250	5,250	*11,550
120	15	83	42,550	57,150	115,850
120	20	83	32,550	43,700	104,800
120	25	79	23,800	32,100	80,700
120	30	74	17,250	23,750	60,700
120	35	73	14,300	19,800	47,650
120	40	70	11,500	16,200	39,600
120	50	64	7,700	11,200	27,950
120	60	53	5,250	8,650	21,550
120	70	45	3,550	6,050	17,300
120	80	42	2,250	4,450	14,250
120	90	27	1,250	3,250	*11,550
130	15	83	40,550	54,150	115,850
130	20	83	30,550	40,700	104,800
130	25	79	21,800	29,100	80,700
130	30	74	15,250	20,750	60,700
130	35	73	12,300	16,800	47,650
130	40	70	9,500	13,200	39,600
130	50	64	5,700	9,200	27,950
130	60	53	3,250	6,650	21,550
130	70	45	1,550	4,050	17,300
130	80	42	500	2,450	14,250
130	90	27	-	1,250	*11,550
140	15	83	38,550	52,150	115,850
140	20	83	28,550	38,700	104,800
140	25	79	19,800	27,100	80,700
140	30	74	13,250	18,750	60,700
140	35	73	10,300	14,800	47,650
140	40	70	7,500	11,200	39,600
140	50	64	3,700	7,200	27,950
140	60	53	2,250	5,650	21,550
140	70	45	500	3,050	17,300
140	80	42	-	1,850	14,250
140	90	27	-	600	*11,550
150	15	83	36,550	50,150	115,850
150	20	83	26,550	36,700	104,800
150	25	79	17,800	25,100	80,700
150	30	74	11,250	16,750	60,700
150	35	73	8,300	12,800	47,650
150	40	70	5,500	9,200	39,600
150	50	64	1,700	5,200	27,950
150	60	53	250	3,650	21,550
150	70	45	-	2,050	17,300
150	80	42	-	800	14,250
150	90	27	-	0	*11,550

Tubular Chord Boom with Hammerhead

Boom Length	Radius in Feet	Boom Angle Degrees	Free Over Side	Free Over Reef	Outriggers Extended
110	90	40	3,100	5,000	11,950
110	100	31	2,300	4,050	9,950
110	110	23	1,700	3,200	7,650
120	25	83	32,550	43,150	88,000
120	30	83	25,400	33,700	75,000
120	35	78	19,750	26,350	59,300
120	40	76	15,200	21,400	46,650
120	45	74	13,100	17,800	38,200
120	50	69	9,300	13,000	27,550
120	60	63	6,850	9,550	21,550
120	70	58	5,150	7,650	16,900
120	80	52	3,850	6,060	13,850
120	90	46	2,900	4,800	11,250
120	100	39	2,150	3,600	8,950
120	110	29	1,500	3,000	8,300
120	120	16	-	2,350	7,150
130	25	83	30,550	40,150	80,000
130	30	83	25,200	33,500	74,800
130	35	79	19,550	26,150	59,100
130	40	77	15,700	21,200	46,450
130	45	75	13,500	18,600	38,000
130	50	70	9,100	12,800	27,350
130	60	66	6,650	9,700	20,950
130	70	61	4,950	6,850	16,250
130	80	55	3,650	5,850	13,650
130	90	50	2,700	4,600	11,350
130	100	43	1,900	3,650	9,550
130	110	37	-	2,850	8,350
130	120	27	-	2,150	6,950
130	130	15	-	1,550	5,950

Boom Length	Radius in Feet	Boom Angle Degrees	Free Over Side	Free Over Reef	Outriggers Extended
140	25	83	28,550	38,000	74,800
140	30	83	23,200	31,300	62,000
140	35	79	18,500	24,000	47,650
140	40	76	15,500	21,000	46,250
140	45	74	13,400	18,400	37,800
140	50	72	11,300	15,800	30,350
140	60	66	8,350	11,250	21,550
140	70	63	6,350	8,650	16,900
140	80	58	4,700	6,550	13,450
140	90	54	3,450	5,450	11,250
140	100	48	2,500	4,350	9,050
140	110	42	1,100	2,600	7,900
140	120	35	-	1,950	6,750
140	130	27	-	1,350	5,950
140	140	15	-	700	4,950
150	25	83	26,550	35,400	70,000
150	30	83	21,200	28,700	64,800
150	35	79	15,500	20,800	48,000
150	40	77	12,500	17,800	42,600
150	45	74	10,400	15,200	34,150
150	50	70	7,400	11,400	25,700
150	60	66	5,450	8,350	20,950
150	70	61	4,150	7,050	16,300
150	80	56	2,900	5,850	13,650
150	90	52	2,200	4,650	11,350
150	100	46	1,500	3,650	9,550
150	110	41	-	2,850	8,350
150	120	34	-	2,150	6,950
150	130	26	-	1,550	5,950
150	140	24	-	1,150	4,950
150	150	14	-	600	4,050

Load ratings do not exceed 85% of tipping with crane standing level on firm, uniformly supporting surface. Outrigger ratings at radii of 25 feet or less are based on strength, not stability. Safe loads depend on ground conditions, boom length, radius of operation, condition and inflation (100 psi) of tires, and proper handling, all of which must be taken into consideration by user.

"Radius in feet" is the horizontal distance at ground level from center pin to a vertical line through the center of gravity of the suspended load. Blocks, slings, buckets and other load-carrying devices are considered part of the load. Ratings marked (*) require retractable "A" frame fully raised. For duty cycle ratings (dragline, clamshell, grapple, magnet, etc.)

For loads up to 46,500 lbs. Use 2-part maximum reeving without hanger block. Reduce ratings 500 lbs. when using optional two-sheave hanger block (for up to 6-part line).

Crane, with "D" counterweight and outriggers extended and set, will self-erect 150 ft. main boom with hammerhead less jib or:

- 200 ft. boom plus 20 ft. No. 9 jib.
- 190 ft. boom plus 40 ft. No. 9 jib.
- 200 ft. boom plus 30 ft. No. 9 jib.
- 180 ft. boom plus 50 ft. No. 9 jib.
- 200 ft. boom plus 40 ft. No. 9H/L jib.
- 190 ft. boom plus 60 ft. No. 9H/L jib.
- 180 ft. boom plus 80 ft. No. 9H/L jib.

MODEL 7450 LIFTING CRANE RATINGS
 Tubular Chord Boom with Tapered Tip

Boom Length	Radius in Feet	Boom Angle Degrees	Free Over Side	Free Over Reef	Outriggers Extended And Set
80	15	81	57,000	74,000	190,000
80	20	75	35,950	47,100	