

*"Bringing Innovation to Construction"*



This versatile unit is setting the global standard in self erecting tower cranes. Some of the key features are:

- Jib 131', clearance under hook 80'
- Capacity at inner limit 8,820 lbs
- Capacity at outer limit 2,535 lbs
- Can be luffed to 30°
- Powerlift option provides 20% more capacity when needed
- No concrete base required
- Footprint is only 13' x 13'
- Galvanized structure
- Site or generator powered
- Radio remote control
- Full set up in less than 1 day

Full details can be found at our website or by calling our toll free number. Dealer inquiries welcome

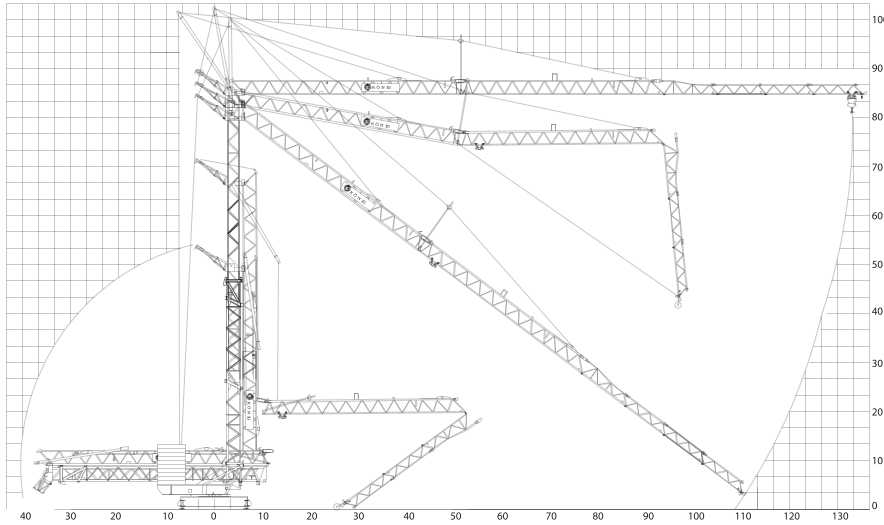
### Koenig Cranes North America

2190 A-Carpenter Street  
P.O. Box 2304, Abbotsford  
BC Canada V2T 4X2

Tel 604-852-2192  
Fax 604-852-4421  
Email [info@koenigcranes.com](mailto:info@koenigcranes.com)

# K60 Technical Data

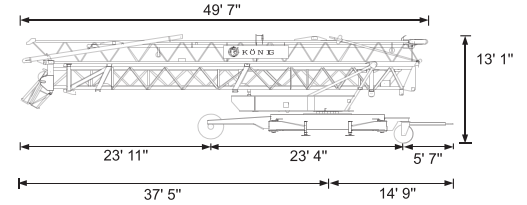
## Erection



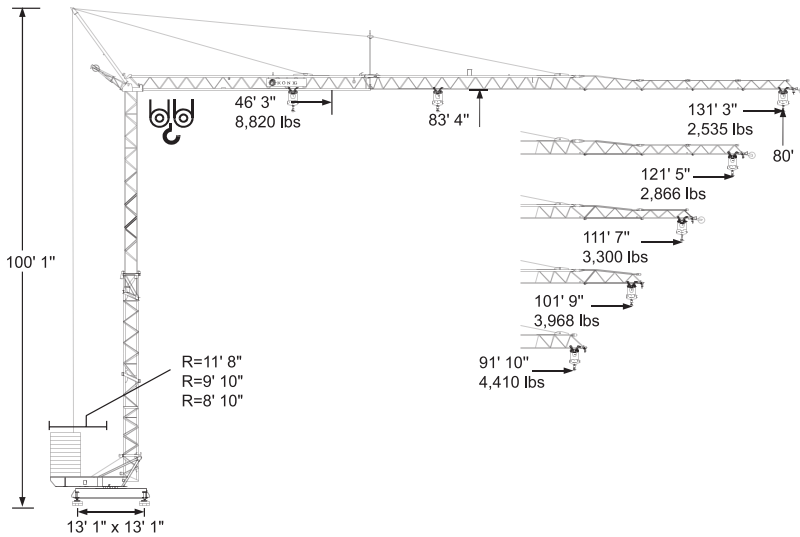
## Weight

Dead weight approx.	18.7 T	Transport weight approx.	20.4 T
Counterweight	R= 7' 10" 30.8 T R= 6' 7" 35.5 T R= 5' 11" 39.4 T		

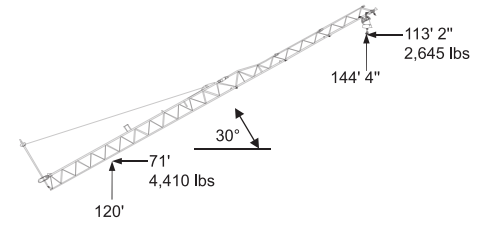
## Transportation by Road



## Rigging



## Luffing



## Reactions

	In service	Out of service
Reactions	31.4 T	27.6 T

## Radius and Capacity

Radius	ft	0°	T	ft x lbs													
				ft	69	72	75	79	82	85	89	92	102	112	121	131	
131	2.2	83	4410	4410	4410	4410	4410	4189	4189	4012	3571	3197	2910	2645			
121	2.2	87	4410	4410	4410	4410	4410	4410	4299	4123	3660	3285	2975				
112	2.2	90	4410	4410	4410	4410	4410	4410	4410	4277	3814	3417					
102	2.2	95	4410	4410	4410	4410	4410	4410	4410	4410	4080						
92	2.2	92	4410	4410	4410	4410	4410	4410	4410	4410							
30°		Radius (ft)	60	62	65	69	71	74	77	79	88	96	108	113			
30°		Hook Height (ft)	113	115	116	118	120	121	123	125	131	135	139	144			

Radius	ft	0°	T	ft x lbs													
				ft	46	52	59	66	72	79	85	92	102	112	121	131	
131	2.2	46	8820	7562	6570	5798	5181	4674	4255	3902	3461	3086	2800	2535			
121	2.2	47	8820	7760	6746	5952	5313	4806	4365	4012	3549	3175	2865				
112	2.2	49	8820	8069	7011	6195	5534	5004	4541	4167	3704	3307					
102	2.2	52	8820	8620	7518	6636	5930	5357	4872	4475	3968						
92	2.2	52	8820	8620	7518	6636	5930	5357	4872	4410							

## Speeds

	Step	ft/min.	lbs	kW
	1	20 - 10	4400 - 8800	3.5
	2	78 - 39	4400 - 8800	9
	3	157 - 78	2425 - 4400	11
	1	65		1.1
	2	131		1.5
	0-0.75	U/min. sl./min. tr./min.		3.0

Cross section of cable up to 5x10<sup>2</sup>      Operation voltage 400 V      Frequency 50 Hz      Power requirement 13.2 kVA (14.7 kW)