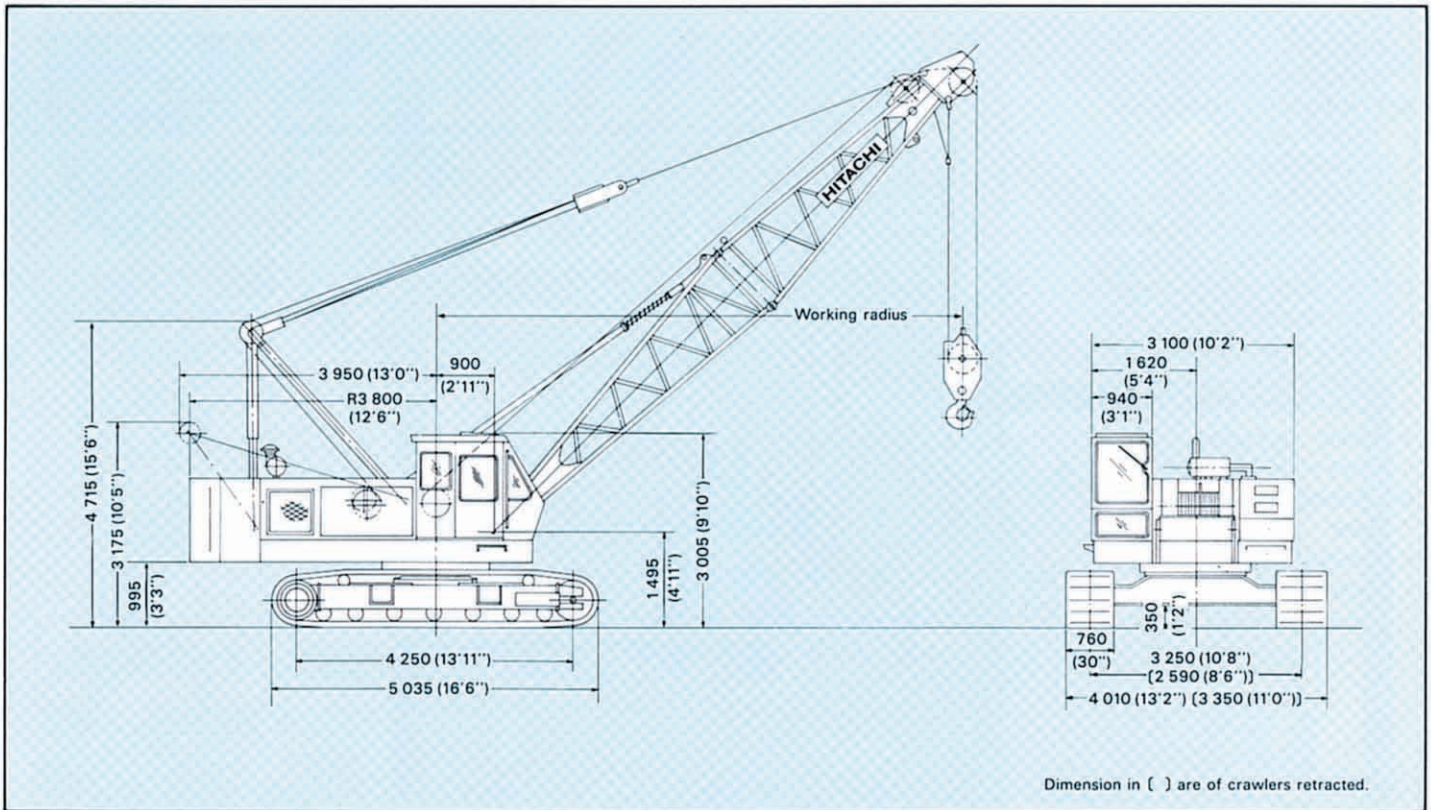


# Dimensions

Unit: mm (ft in)



# Specifications

<b>Maximum rated load</b>		35 000 kg (77 200 lb) at 3.6 m (11'10") working radius
<b>Boom length</b>	Basic boom	10.0 m (32'10")
	Max. boom	40.0 m (131'3")
	Jib	6.10 m (20'0") — 9.15 m (30'0") — 12.20 m (40'0") — 15.25 m (50'0")
	Max. boom with jib	46.2 m (151'7") [34.0 m (111'7") + 12.2 m (40'0")]
<b>Swing speed</b>		0 — 4.0 min <sup>-1</sup> (0 — 4.0 rpm)
<b>Travel speed</b>		0 — 1.8 km/h (0 — 1.12 mph)
<b>Gradeability</b>		22° (40%)
<b>Operating weight</b>	Equipped with basic boom, 35 000 kg (77 200 lb) capacity hook and 11 600 kg (25 600 lb) counterweight	Approx. 36 600 kg (80 700 lb)
<b>Ground pressure</b>		0.53 bar (0.53 kgf/cm <sup>2</sup> , 7.54 psi)
<b>Engine</b>	Model	HINO H06C-T
	Rated horsepower	110 kW (150 PS) at 2 000 min <sup>-1</sup> (2 000 rpm)

## HOOKS

Capacity	Self weight	Number of hoist reeving and maximum rated loads							
		7	6	5	4	3	2	1	
35 000 kg (77 200 lb)	390 kg (860 lb)	35 000 kg (77 200 lb)	34 200 kg (75 400 lb)	28 500 kg (62 800 lb)	22 800 kg (50 300 lb)	17 100 kg (37 700 lb)	11 400 kg (25 100 lb)		Standard for main boom
15 000 kg (33 100 lb)	300 kg (660 lb)					15 000 kg (33 100 lb)	11 400 kg (25 100 lb)		Optional for main boom
5 000 kg (11 000 lb)	130 kg (287 lb)							5 000 kg (11 000 lb)	Optional for jib or aux. jib

## DRUMS

### Dimensions

	Rope dia.	Width	Drum p.c.d.	Max. rope capacity
Main hoist drum	20 mm (0.787")	306 mm (12.05")	420 mm (16.54")	220 mm (722')
Aux. hoist drum	20 mm (0.787")	306 mm (12.05")	420 mm (16.54")	220 mm (722')

### Line speed and line pull

H : High speed range L : Low speed range

	Max. line speed m/min (ft/min)				Effective line pull	@	Line speed	Max. starting line pull	Max. running line pull
	Hoisting		Lowering						
Main hoist drum	H	70 (230)	H	70 (230)	108 kN (11 000 kgf, 24 300 lbf)	@	34 m/min (112 ft/min)	137 kN (14 000 kgf, 30 900 lbf)	143 kN (14 600 kgf, 32 000 lbf)
	L	35 (115)	L	35 (115)					
Aux. hoist drum	H	70 (230)	H	70 (230)	108 kN (11 000 kgf, 24 300 lbf)	@	34 m/min (112 ft/min)	137 kN (14 000 kgf, 30 900 lbf)	143 kN (14 600 kgf, 32 000 lbf)
	L	35 (115)	L	35 (115)					

#### Notes:

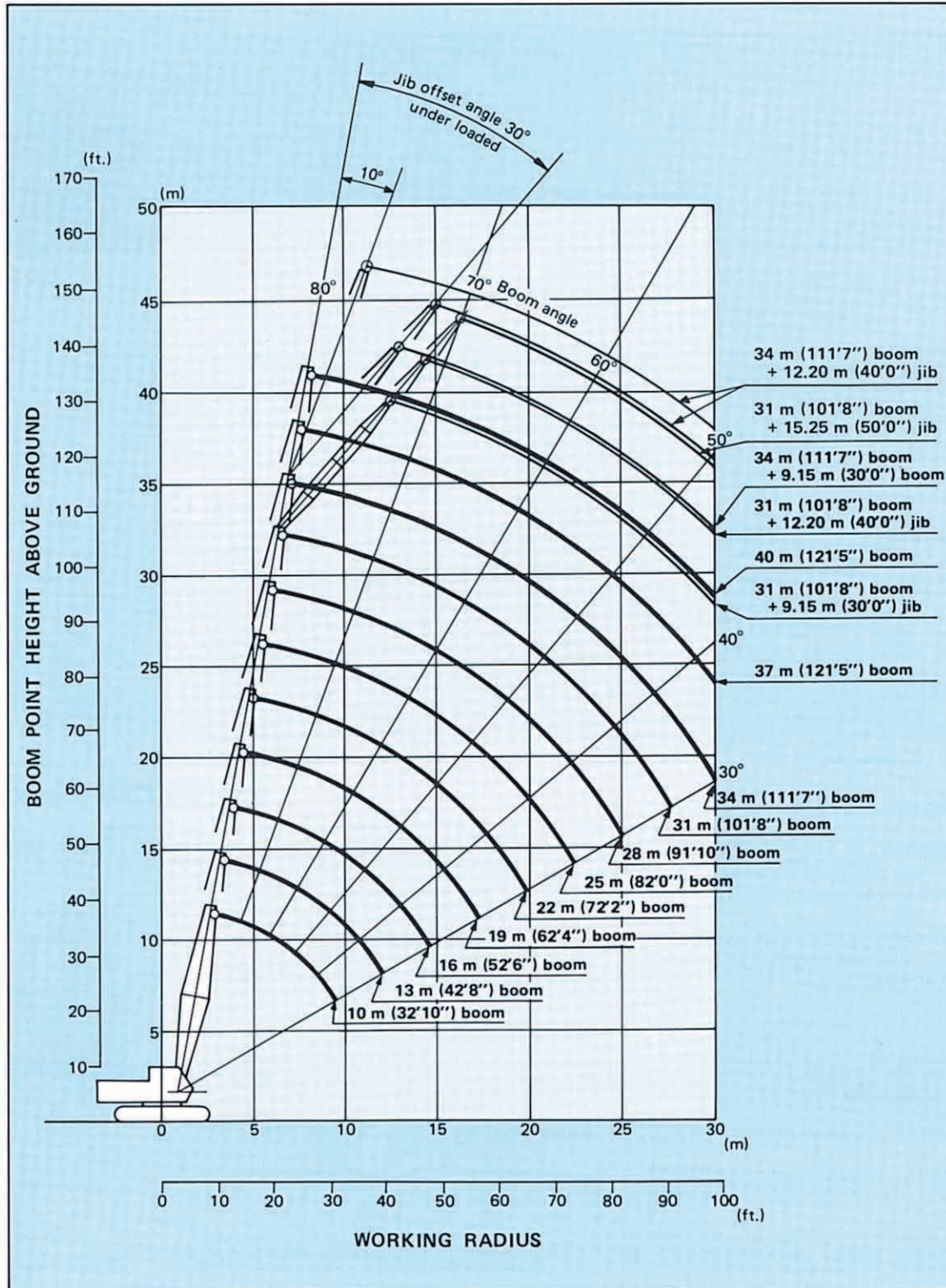
- Line speed and line pull are based on first layer of winding at rated engine rpm.
- Hoisting line speed varies with load.
- Line pull is based on a single line pull in high speed range.
- Effective line pull is equivalent to available line pull of mechanical drive winch.
- When starting, hydraulic motor is without rotating, the line pull is "Max. starting line pull". After motor rotating, the line pull becomes "Max. running line pull" shortly.

## BOOM HOIST DRUM

Rope diameter	Hoisting line speed	Lowering line speed
14 mm (0.551")	60 m/min (197 ft/min)	60 m/min (197 ft/min)

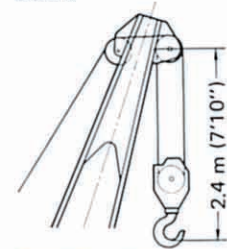


# Working Ranges



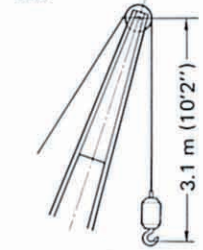
## Hook Clearance

Boom



35 000 kg (77 200 lb)  
Capacity hook

Jib



5 000 kg (11 000 lb)  
Capacity hook



# Crane Ratings

## JIS Rating:

The rated loads shown don't exceed 78% of tipping loads with the machine on firm level ground.

## BS Rating:

The rated loads are determined according to BS (British Standard; 1981) on condition that the machine is stationed on firm, level ground.

## PCSA Rating:

The rated loads listed are determined according to PCSA (Power Crane and Shovel Association is U.S.A.) and do not exceed 75% of tipping load on condition that the machine is stationed on firm, level ground.

## Tubular Chord Crane Boom in 360° Working Area with Fully Extended Side Frames

Boom length	Working radius		Boom angle	Boom point height		Rated load				
						JIS rating	BS rating		PCSA rating	
m (ft in)	m	ft in	degree	m	ft in	kg	kg	lb	kg	lb
10.0 (32'10")	3.0	9'10"	79.26	11.3	37'1"	35 000	35 000	77 100	35 000	77 100
	3.5	11'6"	76.31	11.2	36'9"	35 000	35 000	77 100	35 000	77 100
	3.6	11'10"	75.71	11.1	36'5"	35 000	35 000	77 100	33 650	74 100
	3.7	12'2"	75.12	11.1	36'5"	33 450	33 450	73 700	32 100	70 700
	4.0	13'1"	73.32	11.0	36'1"	29 350	29 350	64 700	28 150	62 000
	4.5	14'9"	70.28	10.8	35'5"	24 300	24 300	53 500	23 350	51 400
	5.0	16'5"	67.18	10.6	34'9"	20 750	20 750	45 700	19 900	43 800
	6.0	19'8"	60.72	10.1	33'2"	15 950	15 950	35 100	15 300	33 700
	7.0	23'0"	53.80	9.4	30'10"	12 950	12 950	28 500	12 400	27 300
	8.0	26'3"	46.16	8.6	28'3"	10 850	10 850	23 900	10 350	22 800
9.0	29'6"	37.30	7.4	24'3"	9 300	9 300	20 500	8 900	19 600	
9.6	31'6"	30.95	6.4	21'0"	8 500	8 500	18 700	8 100	17 800	
13.0 (42'8")	3.6	11'10"	79.07	14.2	46'7"	35 000	35 000	77 100	33 600	74 000
	3.7	12'2"	78.62	14.2	46'7"	33 350	33 350	73 500	32 050	70 600
	4.0	13'1"	77.26	14.1	46'3"	29 250	29 250	64 400	28 100	61 900
	4.5	14'9"	74.98	14.0	45'11"	24 250	24 250	53 400	23 250	51 200
	5.0	16'5"	72.68	13.8	45'3"	20 650	20 650	45 500	19 800	43 600
	6.0	19'8"	67.96	13.5	44'4"	15 900	15 900	35 000	15 200	33 500
	7.0	23'0"	63.08	13.0	42'8"	12 850	12 850	28 300	12 300	27 100
	8.0	26'3"	57.96	12.4	40'8"	10 750	10 750	23 600	10 250	22 500
	9.0	29'6"	52.52	11.7	38'5"	9 200	9 200	20 200	8 800	19 400
	10.0	32'10"	46.64	10.8	35'5"	8 050	8 050	17 700	7 650	16 800
12.0	39'4"	32.44	8.3	27'3"	6 350	6 350	13 900	6 050	13 300	
12.2	40'0"	30.71	7.9	25'11"	6 200	6 200	13 600	5 900	13 000	
16.0 (52'6")	4.1	13'5"	79.30	17.2	56'5"	28 000	29 200	64 300	28 050	61 800
	4.5	14'9"	77.86	17.1	56'1"	24 200	24 200	53 300	23 200	51 100
	5.0	16'5"	76.01	17.0	55'9"	20 600	20 600	45 400	19 750	43 500
	6.0	19'8"	72.27	16.7	54'10"	15 800	15 800	34 800	15 150	33 400
	7.0	23'0"	68.45	16.3	53'6"	12 750	12 750	28 100	12 200	26 800
	8.0	26'3"	64.52	15.9	52'2"	10 650	10 650	23 400	10 200	22 400
	9.0	29'6"	60.45	15.3	50'2"	9 100	9 100	20 000	8 700	19 100
	10.0	32'10"	56.20	14.7	48'3"	7 950	7 950	17 500	7 550	16 600
	12.0	39'4"	46.94	13.0	42'8"	6 250	6 250	13 700	5 950	13 100
	14.0	45'11"	35.91	10.7	35'1"	5 150	5 100	11 200	4 850	10 600
14.8	48'7"	30.56	9.4	30'10"	4 750	4 700	10 300	4 500	9 920	

Continued on next page ➡



Boom length	Working radius		Boom angle	Boom point height		Rated load				
						JIS rating	BS rating		PCSA rating	
m (ft in)	m	ft in	degree	m	ft in	kg	kg	lb	kg	lb
19.0 (62'4")	4.6	15'1"	79.50	20.2	66'3"	23 800	24 150	53 200	23 150	51 000
	5.0	16'5"	78.26	20.1	65'11"	20 500	20 550	45 300	19 700	43 400
	6.0	19'8"	75.15	19.8	65'0"	15 750	15 750	34 700	15 100	33 200
	7.0	23'0"	72.00	19.5	64'0"	12 700	12 700	27 900	12 150	26 700
	8.0	26'3"	68.78	19.1	62'8"	10 600	10 600	23 300	10 150	22 300
	9.0	29'6"	65.49	18.7	61'4"	9 050	9 050	19 900	8 650	19 000
	10.0	32'10"	62.11	18.2	59'9"	7 900	7 900	17 400	7 500	16 500
	12.0	39'4"	54.98	16.9	55'5"	6 200	6 200	13 600	5 900	13 000
	14.0	45'11"	47.14	15.3	50'2"	5 050	5 000	11 000	4 800	10 500
	16.0	52'6"	38.10	13.0	42'8"	4 250	4 200	9 250	4 000	8 810
17.4	57'1"	30.46	10.9	35'9"	3 800	3 700	8 150	3 550	7 820	
22.0 (72'2")	5.1	16'9"	79.60	23.1	75'9"	20 000	20 500	45 100	19 650	43 300
	6.0	19'8"	77.22	22.9	75'2"	15 700	15 700	34 600	15 050	33 100
	7.0	23'0"	74.53	22.6	74'2"	12 650	12 650	27 800	12 100	26 600
	8.0	26'3"	71.80	22.3	73'2"	10 550	10 550	23 200	10 050	22 100
	9.0	29'6"	69.02	22.0	72'2"	9 000	9 000	19 800	8 600	18 900
	10.0	32'10"	66.19	21.5	70'6"	7 800	7 800	17 100	7 450	16 400
	12.0	39'4"	60.33	20.5	67'3"	6 100	6 100	13 400	5 800	12 700
	14.0	45'11"	54.08	19.2	63'0"	5 000	4 900	10 800	4 700	10 300
	16.0	52'6"	47.29	17.5	57'5"	4 150	4 100	9 030	3 950	8 700
	18.0	59'1"	39.62	15.4	50'6"	3 550	3 450	7 600	3 350	7 380
20.0	65'7"	30.38	12.4	40'8"	3 050	2 950	6 500	2 850	6 280	
25.0 (82'0")	6.0	19'8"	78.78	26.0	85'4"	15 650	15 650	34 500	15 000	33 000
	7.0	23'0"	76.43	25.8	84'8"	12 600	12 600	27 700	12 050	26 500
	8.0	26'3"	74.05	25.5	83'8"	10 500	10 500	23 100	10 000	22 000
	9.0	29'6"	71.65	25.2	82'8"	8 950	8 950	19 700	8 500	18 700
	10.0	32'10"	69.20	24.8	81'4"	7 750	7 750	17 000	7 400	16 300
	12.0	39'4"	64.19	23.9	78'5"	6 050	6 000	13 200	5 750	12 600
	14.0	45'11"	58.95	22.8	74'10"	4 900	4 850	10 600	4 650	10 200
	16.0	52'6"	53.39	21.4	70'3"	4 100	4 000	8 810	3 850	8 480
	18.0	59'1"	47.40	19.7	64'8"	3 450	3 350	7 380	3 250	7 160
	20.0	65'7"	40.73	17.6	57'9"	2 950	2 850	6 280	2 800	6 170
22.0	72'2"	32.99	14.9	48'11"	2 600	2 450	5 400	2 400	5 290	
22.6	74'2"	30.33	13.9	45'7"	2 500	2 350	5 180	2 300	5 070	
28.0 (91'10")	6.5	21'4"	79.00	29.0	95'2"	14 000	15 550	34 200	14 900	32 800
	7.0	23'0"	77.91	28.8	94'6"	12 500	12 500	27 500	11 950	26 300
	8.0	26'3"	75.80	28.6	93'10"	10 400	10 400	22 900	9 900	21 800
	9.0	29'6"	73.68	28.3	92'10"	8 850	8 850	19 500	8 450	18 600
	10.0	32'10"	71.53	28.0	91'10"	7 650	7 650	16 800	7 300	16 000
	12.0	39'4"	67.14	27.2	89'3"	5 950	5 900	13 000	5 650	12 400
	14.0	45'11"	62.60	26.3	86'3"	4 800	4 750	10 400	4 550	10 000
	16.0	52'6"	57.86	25.1	82'4"	4 000	3 900	8 590	3 750	8 260
	18.0	59'1"	52.85	23.7	77'9"	3 350	3 250	7 160	3 150	6 940
	20.0	65'7"	47.48	22.0	72'2"	2 850	2 750	6 060	2 700	5 950
22.0	72'2"	41.59	19.9	65'4"	2 500	2 350	5 180	2 300	5 070	
24.0	78'9"	34.91	17.3	56'9"	2 150	2 000	4 400	2 000	4 400	
25.2	82'8"	30.28	15.4	50'6"	2 000	1 850	4 070	1 850	4 070	
31.0 (101'9")	7.0	23'0"	79.10	31.9	104'8"	12 450	12 450	27 400	11 900	26 200
	8.0	26'3"	77.20	31.7	104'0"	10 350	10 350	22 800	9 900	21 800
	9.0	29'6"	75.30	31.4	103'0"	8 800	8 800	19 400	8 400	18 500
	10.0	32'10"	73.37	31.1	102'0"	7 600	7 600	16 700	7 250	15 900
	12.0	39'4"	69.46	30.5	100'1"	5 900	5 850	12 800	5 600	12 300
	14.0	45'11"	65.45	29.6	97'1"	4 750	4 700	10 300	4 500	9 920
	16.0	52'6"	61.29	28.6	93'10"	3 950	3 800	8 370	3 700	8 150
	18.0	59'1"	56.97	27.4	89'11"	3 300	3 200	7 050	3 100	6 830
	20.0	65'7"	52.41	25.9	85'0"	2 800	2 700	5 950	2 650	5 840
	22.0	72'2"	47.55	24.2	79'5"	2 400	2 250	4 960	2 250	4 960
24.0	78'9"	42.27	22.2	72'10"	2 100	1 950	4 290	1 950	4 290	
26.0	85'4"	36.38	19.7	64'8"	1 850	1 650	3 630	1 700	3 740	
27.8	91'3"	30.25	16.9	55'5"	1 650	1 450	3 190	1 500	3 300	

Continued on next page ➡



Boom length	Working radius		Boom angle	Boom point height		Rated load				
						JIS rating	BS rating		PCSA rating	
m (ft in)	m	ft in	degree	m	ft in	kg	kg	lb	kg	lb
34.0 (111'7")	8.0	26'3"	78.35	34.8	114'2"	10 250	10 250	22 500	9 800	21 600
	9.0	29'6"	76.62	34.5	113'2"	8 700	8 700	19 100	8 300	18 200
	10.0	32'10"	74.88	34.3	112'6"	7 500	7 500	16 500	7 150	15 700
	12.0	39'4"	71.35	33.6	110'3"	5 850	5 750	12 600	5 550	12 200
	14.0	45'11"	67.74	32.9	107'11"	4 650	4 550	10 000	4 400	9 700
	16.0	52'6"	64.04	32.0	105'0"	3 850	3 700	8 150	3 600	7 930
	18.0	59'1"	60.21	30.9	101'5"	3 200	3 050	6 720	3 000	6 610
	20.0	65'7"	56.23	29.6	97'1"	2 700	2 550	5 620	2 550	5 620
	22.0	72'2"	52.05	28.2	92'6"	2 300	2 150	4 730	2 150	4 730
	24.0	78'9"	47.61	26.5	86'11"	2 000	1 850	4 070	1 850	4 070
	26.0	85'4"	42.82	24.4	80'1"	1 750	1 550	3 410	1 600	3 520
	28.0	91'10"	37.56	22.0	72'2"	1 500	1 350	2 970	1 400	3 080
30.0	98'5"	31.55	19.1	62'8"	1 300	1 150	2 530	1 200	2 640	
30.5	100'1"	30.00	18.4	60'4"	1 200	1 050	2 310	1 100	2 420	
37.0 (121'5")	8.0	26'3"	79.31	37.8	124'0"	10 250	10 250	22 500	9 800	21 600
	9.0	29'6"	77.73	37.6	123'4"	8 700	8 700	19 100	8 300	18 200
	10.0	32'10"	76.13	37.4	122'9"	7 500	7 450	16 400	7 150	15 700
	12.0	39'4"	72.91	36.8	120'9"	5 800	5 700	12 500	5 500	12 100
	14.0	45'11"	69.64	36.1	118'5"	4 650	4 550	10 000	4 400	9 700
	16.0	52'6"	66.29	35.3	115'10"	3 800	3 650	8 040	3 600	7 930
	18.0	59'1"	62.85	34.3	112'6"	3 150	3 050	6 720	3 000	6 610
	20.0	65'7"	59.29	33.2	108'11"	2 700	2 500	5 510	2 500	5 510
	22.0	72'2"	55.60	31.9	104'8"	2 300	2 100	4 620	2 100	4 620
	24.0	78'9"	51.74	30.4	99'9"	1 950	1 800	3 960	1 800	3 960
	26.0	85'4"	47.66	28.7	94'2"	1 700	1 500	3 300	1 550	3 410
	28.0	91'10"	43.28	26.7	87'7"	1 450	1 250	2 750	1 350	2 970
30.0	98'5"	38.51	24.4	80'1"	1 200	1 050	2 310	1 150	2 530	
32.0	105'0"	33.18	21.6	70'10"	1 000	900	1 980	1 000	2 200	
40.0 (131'3")	9.0	29'6"	78.66	40.7	133'6"	8 600	8 600	18 900	8 200	18 000
	10.0	32'10"	77.19	40.5	132'11"	7 400	7 350	16 200	7 050	15 500
	12.0	39'4"	74.23	39.9	130'11"	5 700	5 600	12 300	5 400	11 900
	14.0	45'11"	71.23	39.3	128'11"	4 550	4 450	9 810	4 300	9 470
	16.0	52'6"	68.17	38.6	126'8"	3 700	3 550	7 820	3 500	7 710
	18.0	59'1"	65.04	37.7	123'8"	3 100	2 900	6 390	2 900	6 390
	20.0	65'7"	61.82	36.7	120'5"	2 600	2 400	5 290	2 400	5 290
	22.0	72'2"	58.51	35.5	116'6"	2 200	2 000	4 400	2 050	4 510
	24.0	78'9"	55.07	34.2	112'3"	1 850	1 650	3 630	1 700	3 740
	26.0	85'4"	51.48	32.7	107'3"	1 550	1 400	3 080	1 450	3 190
	28.0	91'10"	47.70	30.9	101'5"	1 300	1 150	2 530	1 250	2 750
	30.0	98'5"	43.67	29.0	95'2"	1 100	950	2 090	1 050	2 310
32.0	105'0"	39.31	26.7	87'7"	900	800	1 760	900	1 980	

## Rated Load for Main Boom

### Notes:

- The rated loads shown are based on the machine on firm level ground without traveling.
- The rated loads shown include the weights of all lifting attachments, such as hook and bucket. The load to be actually lifted is the rated load minus the weight of all lifting attachments.
- When the jib or the auxiliary jib is attached, the load to be actually lifted is the rated load minus the weight listed below.

Jib length	6.10 m (20'0")	9.15 m (30'0")	12.2 m (40'0")	15.25 m (50'0")	Aux. Jib
Weight to be reduced	700 kg (1 540 lb)	850 kg (1 870 lb)	1 000 kg (2 200 lb)	1 150 kg (2 540 lb)	200 kg (440 lb)

- The jib can be attached to boom of 19.0 m (62'4") to 34.0 m (111'7") long.
- The auxiliary jib can be attached to boom of 10.0 m (32'10") to 37.0 m (121'5") long.
- The rated load for auxiliary jib is equal to that of main boom at the same working radius, but do not exceed maximum rated load 5 000 kg (11 000 lb)

- Counterweight is 11 600 kg (25 600 lb).
- In operation, crawlers must be extended.

## Rated Load for Jib

### Maximum jib rating

Jib length	6.10 m (20'0")	9.15 m (30'0")	12.20 m (40'0")	15.25 m (50'0")
Jib offset angle				
Max. rated load	10°	5 000 kg (11 000 lb)	5 000 kg (11 000 lb)	4 000 kg (8 820 lb)
	30°	5 000 kg (11 000 lb)	5 000 kg (11 000 lb)	3 200 kg (7 050 lb)

### Notes:

- The rated load for jib is equal to that of the main boom at the same working radius, but should not exceed maximum jib ratings shown.  
The jib offset angle to the main boom is 10° and 30° under load condition.
- The maximum working radius of the jib do not exceed that of the main boom used.