

1968



AMERICAN

500 SERIES

MODEL

5520

TRUCK CRANE



**65
TON
LIFTING
CRANE**

SPECIFICATIONS

**AMERICAN HOIST
& DERRICK COMPANY
ST. PAUL, MINNESOTA 55107**

AMERICAN MODEL 552

Boom Length	Radius in Feet	Boom Angle Degrees	Free Over Side	Free Over Rear	Outriggers Extended and Set
40'	12	78	70,590	84,770	130,000
	15	74	52,730	62,150	*130,000
	20	66	35,900	42,730	* 99,970
	25	58	26,990	32,330	* 71,030
	30	49	21,460	25,850	* 53,070
	35	38	17,700	21,420	* 42,190
50'	12	80	70,200	84,620	130,000
	15	77	52,580	61,990	130,000
	20	71	35,740	42,560	* 99,740
	25	65	26,820	32,160	* 70,980
	30	58	21,300	25,680	* 52,990
	35	51	17,530	21,250	* 42,100
60'	14	80	57,740	67,920	130,000
	15	79	52,400	61,820	130,000
	20	74	35,560	42,380	* 99,490
	25	69	26,640	31,970	* 70,900
	30	64	21,110	25,490	* 52,890
	35	59	17,350	21,060	* 41,980
70'	15	81	52,220	61,630	130,000
	20	77	35,370	42,180	99,230
	25	72	26,440	31,780	70,810
	30	68	20,910	25,290	52,770
	35	63	17,150	20,860	41,840
	40	59	14,420	17,640	34,510
80'	17	80	43,770	51,930	119,420
	20	78	35,180	41,980	97,990
	25	75	26,240	31,570	70,710
	30	71	20,710	25,090	52,640
	35	67	16,950	20,660	41,700
	40	63	14,220	17,440	34,360
*90'	50	55	10,520	13,070	25,130
	60	45	8,130	10,240	*19,560
	70	34	6,460	8,260	*15,830
	80	17	5,220	* 6,780	*12,950
	18	81	40,310	47,960	109,090
	20	80	34,980	41,780	96,040
*90'	25	76	26,040	31,360	70,610
	30	73	20,500	24,880	52,510
	35	70	16,740	20,450	41,550
	40	66	14,010	17,230	34,200
	50	59	10,310	12,860	24,960

Boom Length	Radius in Feet	Boom Angle Degrees	Free Over Side	Free Over Rear	Outriggers Extended and Set
*90'	60	51	7,930	10,030	19,380
	70	43	6,250	8,050	15,650
	80	32	5,020	6,580	12,970
	90	16	4,050	5,440	10,720
	*100'	20	81	34,780	41,580
25		78	25,830	31,150	70,500
30		75	20,290	24,660	52,370
35		72	16,520	20,230	41,390
40		69	13,790	17,010	34,030
50		62	10,100	12,640	24,780
60		56	7,710	9,820	19,200
70		48	6,040	7,840	15,460
80		40	4,800	6,370	12,780
90		30	3,850	5,240	10,760
*110'	100	16	3,090	4,330	8,880
	21	81	32,370	38,810	78,950
	25	79	25,620	30,940	70,390
	30	76	20,080	24,450	52,230
	35	73	16,310	20,020	41,240
	40	71	13,580	16,790	33,870
	50	65	9,880	12,430	24,600
	60	59	7,500	9,600	19,010
	70	53	5,830	7,620	15,270
	80	46	4,590	6,150	12,590
*120'	90	38	3,640	5,020	10,570
	100	29	2,880	4,120	8,990
	110	15	2,250	3,380	7,320
	23	81	28,440	34,260	65,300
	25	80	25,420	30,730	62,730
	30	77	19,870	24,230	52,090
	35	75	16,100	19,800	41,080
	40	72	13,360	16,580	33,700
	50	67	9,660	12,210	24,420
	60	62	7,280	9,380	18,820
*130'	70	56	5,610	7,400	15,070
	80	50	4,370	5,930	12,390
	90	44	3,420	4,800	10,370
	100	37	2,660	3,910	8,790
	110	28	2,040	3,170	7,530
	120	14	1,520	2,560	5,980
	25	81	25,210	30,520	53,700
	30	78	19,660	24,020	48,860
	35	76	15,880	19,580	40,920
	40	74	13,140	16,360	33,530
50	69	9,440	11,990	24,230	
60	64	7,060	9,160	18,630	
70	59	5,390	7,180	14,880	
80	54	4,150	5,710	12,190	
90	48	3,200	4,580	10,170	
100	42	2,440	3,690	8,590	

TRUCK CRANE RATINGS

Boom Length	Radius in Feet	Boom Angle Degrees	Free Over Side	Free Over Rear	Outriggers Extended and Set
*130'	110	35	1,830	2,950	7,320
	120	27	1,310	2,340	6,280
	130	14	—	1,830	4,790
*140'	26	81	23,690	28,770	45,540
	30	79	19,440	23,800	42,200
	35	77	15,660	19,360	38,710
	40	75	12,920	16,140	33,360
	50	71	9,220	11,760	24,050
	60	66	6,830	8,930	18,430
	70	62	5,160	6,950	14,680
	80	57	3,930	5,490	11,990
	90	52	2,980	4,360	9,960
	100	47	2,220	3,460	8,380
	110	41	1,610	2,730	7,120
*150'	120	34	1,090	2,130	6,080
	130	26	—	1,610	5,210
	140	13	—	1,170	3,730
	28	81	21,180	25,870	38,180
	30	80	19,230	23,590	36,760
	35	78	15,450	19,140	33,650
	40	76	12,710	15,910	31,060
*150'	50	72	9,000	11,540	23,860
	60	68	6,610	8,710	18,240

Boom Length	Radius in Feet	Boom Angle Degrees	Free Over Side	Free Over Rear	Outriggers Extended and Set	
*150'	70	64	4,940	6,730	14,480	
	80	59	3,700	5,270	11,780	
	90	55	2,750	4,140	9,760	
	100	50	2,000	3,240	8,180	
	110	45	1,380	2,510	6,910	
*150'	120	39	—	1,900	5,870	
	130	33	—	1,390	5,000	
	140	25	—	—	4,260	
	150	13	—	—	2,780	
	*160'	29	81	19,950	24,470	32,880
		30	81	19,010	23,370	33,250
		35	79	15,230	18,920	29,470
40		77	12,490	15,690	27,150	
50		73	8,780	11,320	23,480	
60		69	6,390	8,490	18,040	
70		66	4,720	6,510	14,280	
80		62	3,480	5,040	11,580	
90		57	2,530	3,910	9,550	
100		53	1,770	3,020	7,970	
110		48	1,160	2,290	6,700	
*160'	120	43	—	1,680	5,660	
	130	38	—	1,170	4,790	
	140	32	—	—	4,050	
	150	24	—	—	3,420	
	160	12	—	—	1,910	

10:59 4-16-68 11:39 4-16-68 14:10 4-10-68

Load ratings do not exceed 85% of tipping with crane standing level on firm, uniformly supporting surface. Outrigger ratings at radii of 18 feet or less are based on strength, not stability. Safe loads depend on ground conditions, boom length, radius of operation, condition and inflation (100 PSI) of tires, and proper handling, all of which must be taken into consideration by user.

"Radius in feet" is the horizontal distance at ground level from center pin to a vertical line through the center of gravity of the suspended load. Blocks, slings, buckets and other load-carrying devices are considered part of the load. Ratings marked (*) require retractable "A" frame fully raised. Crane, with G-J counterweight and outriggers extended and set, will self-erect 160 ft. boom plus 50 ft. No. 7HL Jib or 40 ft. of No. 6 Jib, with tackle not suspended. Duty cycle ratings with reduced counterweight are shown on Page 7.

NO. 6 JIB RATINGS

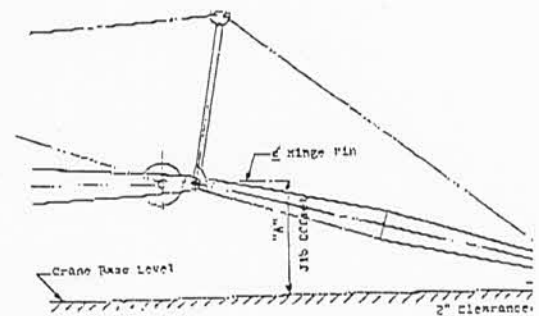
Jib Offset "A"

Maximum Jib Ratings in Pounds

	20 Ft. Jib	30 Ft. Jib	40 Ft. Jib
0 to 6 ft.	13,500	10,500	7,200
9 ft.	11,500	9,500	6,750
12 ft.	10,000	8,200	6,300
15 ft.	—	7,600	5,900
18 ft.	—	—	5,500
Effective Jib Weight at Boom Point	1,030	1,580	2,310

NO. 7HL JIB RATINGS

	30 Ft. Jib	40 Ft. Jib	50 Ft. Jib
0 to 6 ft.	16,000	14,000	11,000
9 ft.	16,000	12,000	9,300
12 ft.	14,000	10,800	8,000
15 ft.	—	9,500	7,000
18 ft.	—	—	6,000
Effective Jib Weight at Boom Point	1,400	1,950	2,630



Jib ratings are based on 80 ft. minimum boom length. For ratings on shorter booms consult factory. The jib load rating is the lesser of: (a) the maximum jib rating, or (b) the main boom rating at the jib working radius, reduced by the effective jib weight and by the weight of all suspended load-carrying devices. The main boom rating with jib in place must be reduced by the effective jib weight, the weight of main fall blocks and slings, and twice the weight of jib tackle.

5520 CRANE AND DUTY CYCLE RATINGS

With Type "G" Duty Cycle Counterweight (15,700 lbs.)

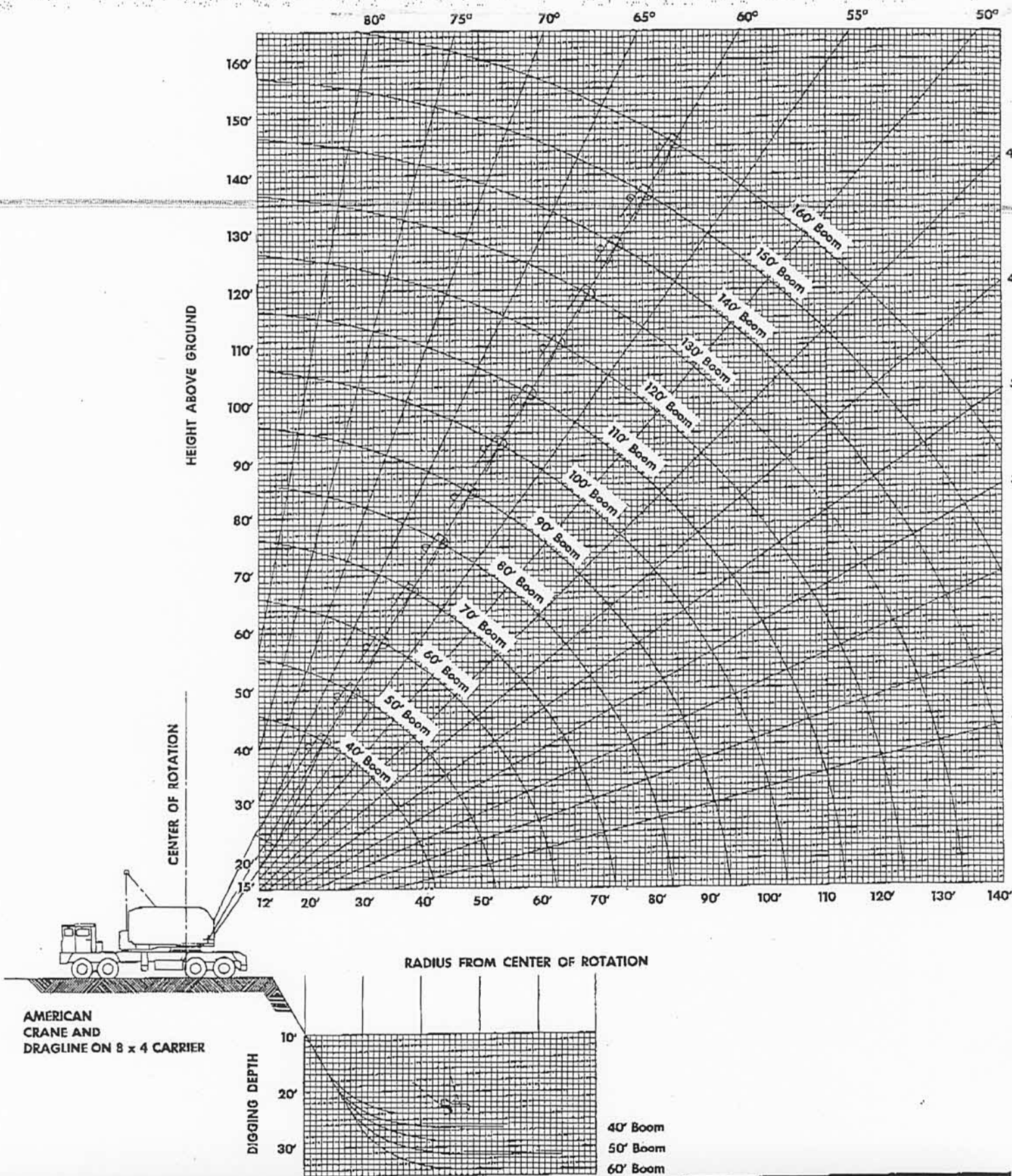
Boom Length	Radius In Feet	Boom Angle Degrees	CRANE RATINGS			Duty Cycle Ratings	
			Free Over Side	Free Over Rear	Outriggers Extended And Set	Clamshell & Magnet Rating	Dragline Rating
40'	12	78	59,720	73,160	125,000	14,000	12,000
	15	74	43,940	53,560	125,000	14,000	12,000
	20	66	29,810	36,730	*91,190	14,000	12,000
	25	58	22,320	27,720	*61,030	14,000	12,000
	30	49	17,690	22,110	*45,620	14,000	12,000
	35	38	14,530	18,280	*36,260	14,000	12,000
	40	25	12,250	15,500	*29,970	12,000	10,500
50'	12	80	59,360	73,010	125,000	14,000	12,000
	15	77	43,770	53,390	125,000	14,000	12,000
	20	71	29,630	36,540	91,180	14,000	12,000
	25	65	22,130	27,530	60,950	14,000	12,000
	30	58	17,490	21,910	45,500	14,000	12,000
	35	51	14,330	18,080	36,120	14,000	12,000
	40	43	12,050	15,290	*29,820	12,000	10,300
50	22	8,950	11,520	*21,890	8,000	7,500	
60'	14	80	48,090	58,510	125,000	14,000	12,000
	15	79	43,600	53,210	125,000	14,000	12,000
	20	74	29,440	36,350	91,150	14,000	12,000
	25	69	21,940	27,330	60,860	14,000	12,000
	30	64	17,290	21,710	45,380	14,000	12,000
	35	59	14,130	17,870	35,980	14,000	12,000
	40	53	11,840	15,090	29,670	10,100	10,100
	50	39	8,740	11,310	*21,720	7,300	7,300
60	20	6,740	8,860	*16,920	5,600	5,600	
70'	15	81	43,420	53,030	125,000	14,000	12,000
	20	77	29,240	36,150	91,110	14,000	12,000
	25	72	21,730	27,120	60,760	14,000	12,000
	30	68	17,080	21,500	45,250	14,000	12,000
	35	63	13,920	17,660	35,830	14,000	12,000
	40	59	11,630	14,870	29,500	11,000	9,900
	50	49	8,530	11,090	21,540	7,200	7,200
	60	36	6,530	8,640	*16,730	5,400	5,400
70	19	5,130	6,930	*13,510	4,200	4,200	
80'	17	80	36,280	44,580	112,180	14,000	12,000
	20	78	29,050	35,950	91,070	14,000	12,000
	25	75	21,530	26,910	60,660	14,000	12,000
	30	71	16,870	21,290	45,120	14,000	12,000
	35	67	13,710	17,450	35,680	14,000	12,000
	40	63	11,410	14,650	29,340	11,000	9,800
	50	55	8,310	10,870	21,360	7,000	7,000
	60	45	6,310	8,420	16,540	5,200	5,200
70	34	4,910	6,710	*13,310	4,100	4,100	
80	17	3,870	5,440	*11,000	3,300	3,300	

Boom Length	Radius In Feet	Boom Angle Degrees	CRANE RATINGS			Duty Cycle Ratings	
			Free Over Side	Free Over Rear	Outriggers Extended And Set	Clamshell & Magnet Rating	Dragline Rating
*90'	18	81	33,330	41,110	104,610	14,000	12,000
	20	80	28,850	35,750	91,020	14,000	12,000
	25	76	21,320	26,700	60,550	14,000	12,000
	30	73	16,660	21,070	44,980	14,000	12,000
	35	70	13,490	17,230	35,520	14,000	12,000
	40	66	11,200	14,440	29,170	11,000	9,600
	50	59	8,090	10,650	21,180	6,800	6,800
	60	51	6,090	8,200	16,350	5,000	5,000
	70	43	4,680	6,490	13,110	3,900	3,900
*100'	80	32	3,650	5,220	10,800	3,100	3,100
	90	16	2,850	4,240	9,060	2,500	2,500
	20	81	28,640	35,540	90,970	14,000	12,000
	25	78	21,110	26,490	60,440	14,000	12,000
	30	75	16,450	20,860	44,840	14,000	12,000
	35	72	13,270	17,010	35,360	14,000	12,000
	40	69	10,980	14,210	29,000	10,000	9,400
	50	62	7,870	10,430	20,990	6,600	6,600
	60	56	5,860	7,980	16,150	4,900	4,900
	70	48	4,460	6,260	12,910	3,700	3,700
*100'	80	40	3,420	4,990	10,590	2,900	2,900
	90	30	2,630	4,020	8,850	2,300	2,300
	100	16	1,990	3,240	7,490	1,800	1,800

Crane ratings do not exceed 85% of tipping load. "Radius in Feet" is the horizontal distance at crane base level from center pin to a vertical line through the center of gravity of the suspended load. Blocks, slings, buckets and other load carrying devices are considered part of the load. Outrigger ratings at radii of 18 ft. or less are based on strength, not stability.

Ratings marked (*) require retractable A-frame in fully raised position. For duty cycle service (dragline, clamshell, grapple, magnet, etc.) counterweight must be reduced to 15,700 lbs. by removing type "J" center insert. Duty cycle ratings are as above. Maximum recommended dragline boom length is 70 ft.

BOOM ANGLE DIAGRAM



SOLD & SERVICED BY:

AMERICAN STATE EQUIPMENT CO., INC.

2055 S. 108th ST. - MILWAUKEE, WIS. - 541-8700

5M 8/68 CPI

Form No. 5520-TS-1

2214 S STOUTANTON DR. MILWAUKEE WIS 53222

Printed in U.S.A.