

# AC24-155 Articulating Crane

## Specifications

Number of Extensions	1-Hydraulic	2-Hydraulic	3-Hydraulic	4-Hydraulic
Crane Rating*	156,000 ft-lb (21.5 tm)	156,000 ft-lb (21.5 tm)	156,000 ft-lb (21.5 tm)	156,000 ft-lb (21.5 tm)
Max. Horizontal Reach	20'8" (6.3 m)	27' (8.21 m)	33'6" (10.19 m)	39'10" (12.12 m)
Max Vertical Reach Hydraulic	32'8" (9.94 m)	38'11" (11.85 m)	45'5" (13.82 m)	51'9" (15.75 m)
Max. Capacity	20,000 lb (9060 kg)	19,700 lb (2950 kg)	19,340 lb (8790 kg)	18,820 lb (8555 kg)
Max Capacity @ Max Reach	7,500 lb (3400 kg)	5,600 lb (2535 kg)	4,300 lb (1940 kg)	3,400 lb (1510 kg)
Crane Weight**	5,700 lb (2570 kg)	6,000 lb (2720 kg)	6,300 lb (2870 kg)	3010 lb (6,300 kg)
Number of Extensions	5-Hydraulic	6-Hydraulic	7-Hydraulic	8-Hydraulic
Crane Rating*	156,000 ft-lb (21.5 tm)	156,000 ft-lb (21.5 tm)	156,000 ft-lb (21.5 tm)	156,000 ft-lb (21.5 tm)
Max. Horizontal Reach	46'8" (14.21 m)	16'6" (16.3 m)	60'5" (18.4 m)	67'4" (20.5 m)
Max Vertical Reach Hydraulic	58'6" (17.83 m)	65'4" (19.9 m)	72'3" (22 m)	79'1" (24.1 m)
Max. Capacity	18,400 lb (8330 kg)	17,900 lb (8120 kg)	17,630 lb (8010 kg)	17,240 lb (17240 kg)
Max Capacity @ Max Reach	2,600 lb (1175 kg)	2,000 lb (900 kg)	1,500 lb (670 kg)	1,100 lb (500 kg)
Crane Weight**	6,900 lb (3130 kg)	7,200 lb (3250 kg)	7,400 lb (3350 kg)	7,600 lb (3450 kg)

\*Crane rating (ft-lb) is the rated load (lb) x the respective distance (ft) from centerline of rotation with all extensions retracted and the inner and outer booms in a horizontal position, per ANSI B30.22.

\*\*Crane weight does not include outrigger

## Specifications

Outrigger Foot Diameter	5.91" (150 mm)	Optimum Pump Capacity	10 GPM (38 L/min)
Crane Storage Height	91.73" (2330 mm)	System Pressure	4714 PSI (325 BAR)
Mounting Space***	40" (1016 mm)	Outrigger Extension Span	18' (5.5 m)
Rotational Torque	1,608 ft-lb (2180 daNm)	Standard (manual out, hydraulic down)	
Rotation	400°		
Oil Reserve Capacity	9.25 gal (35L)		

\*\*\*Allow an additional 10" between the cab and crane base for swing clearance.

## Minimum Chassis Specifications

Gross Vehicle Weight Rating (GVWR)	41,876 lb
Resistance to Bending Moment (RBM)	1,185,900 in-lb

## Notes

A. Weight distribution calculations are required to determine final axle loading. The use of service bodies, diesel engines, or longer wheelbase, can increase the minimum chassis requirements. Please contact Auto Crane for details.

B. GAWR (Gross Axle Weight Rating) is the total weight of the vehicle including the (chassis, driveline, occupants, cargo, etc. ) that is allowed by the manufacturer requirements, for the vehicle to go down the road safely. This is a critical factor in purchasing a truck for the crane application. All chassis and crane applications



4707 N. Mingo Road  
Tulsa, OK 74117  
918-836-0463  
www.autocrane.com

AC24-155

# AC24-155 Articulating Crane

## System Characteristics

### Rotation System

Our Articulating Cranes utilize a rack and pinion rotation system which provides high torque for demanding applications. The column turns on bushings made of an advanced composite material for long service life. The rotation cylinders are protected by a load holding valve and flow controls to ensure safe and precise operation.

### Cylinder Holding Valves

Flanged load holding valves on hydraulic cylinders provide smooth load control and load holding. In the event of a hose failure, they lock the cylinder in place to prevent uncontrolled crane movement or falling loads.

### Hydraulic Overload System

Providing the Hydraulic Overload protection are main relief and port relief valves, as well as counterbalance valves.

### Hydraulic System

The hydraulic system is open-center as standard. Included on the crane is a hydraulic oil reservoir, return line filter, high-pressure filter(1), and control valve with dual-side controls(2). An optional closed-center valve is available on request.

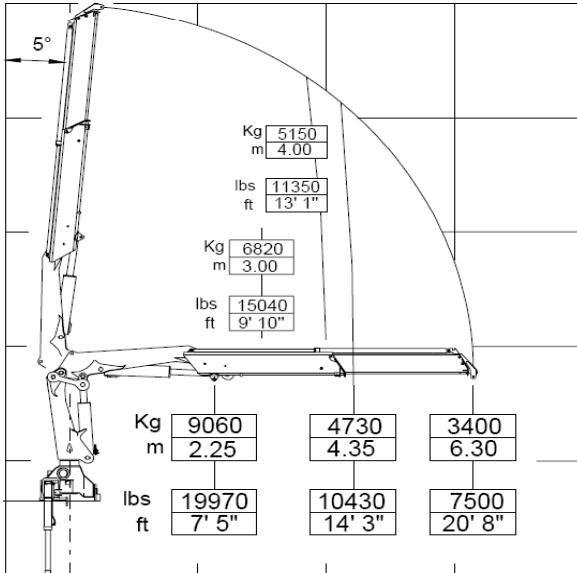
### Exceptions

(1) Cranes with manual controls do not have high pressure filter

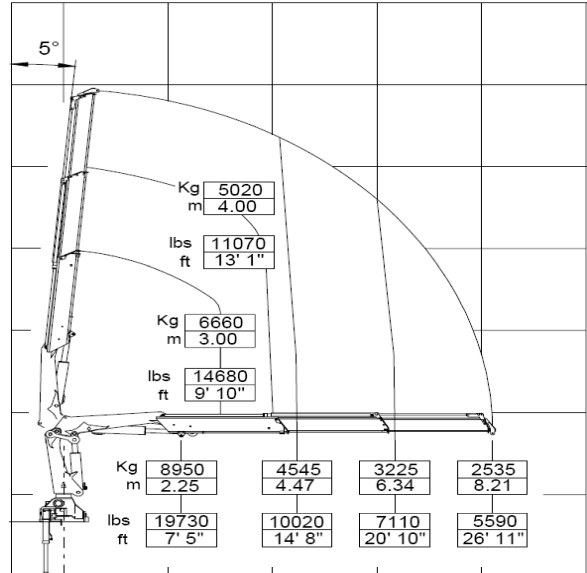
(2) Cranes with radio controls do not have dual-side controls

## Capacity Charts

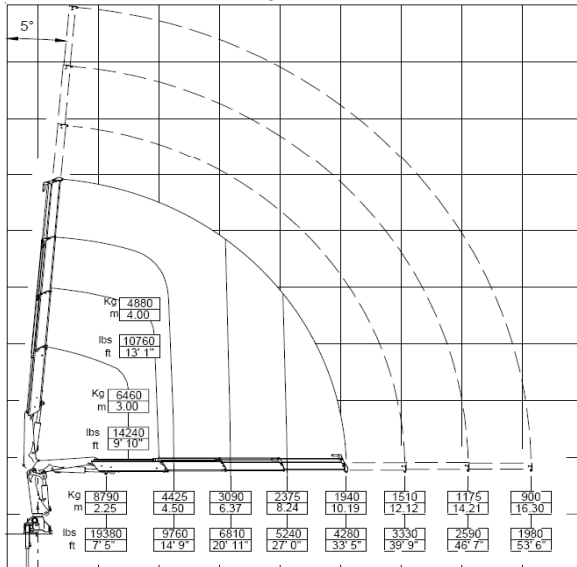
AC24-155 1 Hydraulic Extension



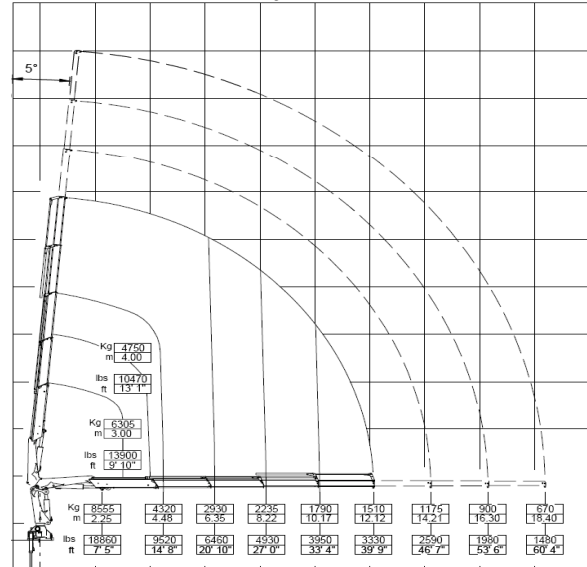
AC24-155 2 Hydraulic Extensions



AC24-155 3 Hydraulic Extension



AC24-155 4 Hydraulic Extensions

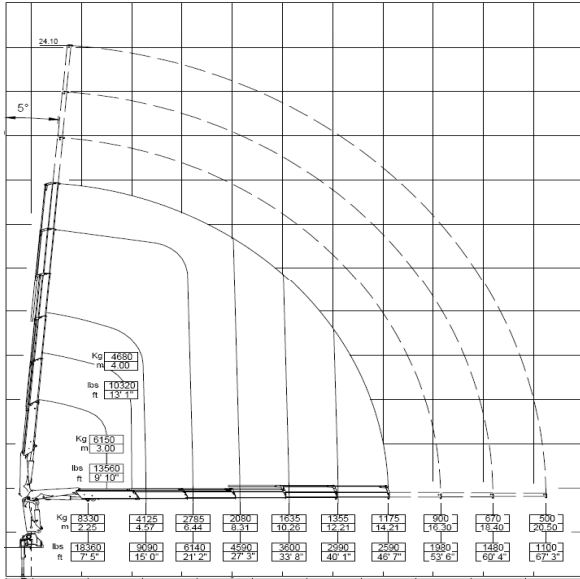


4707 N. Mingo Road  
Tulsa, OK 74117  
918-836-0463  
www.autocrane.com

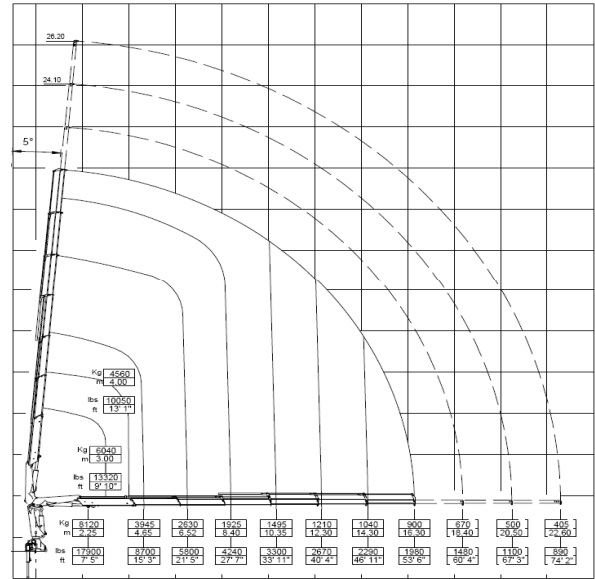
# AC24-155 Articulating Crane

## Capacity Charts

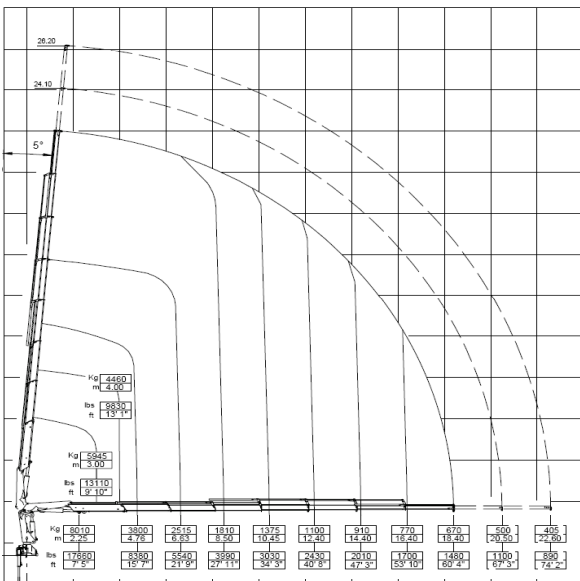
AC24-155 5 Hydraulic Extension



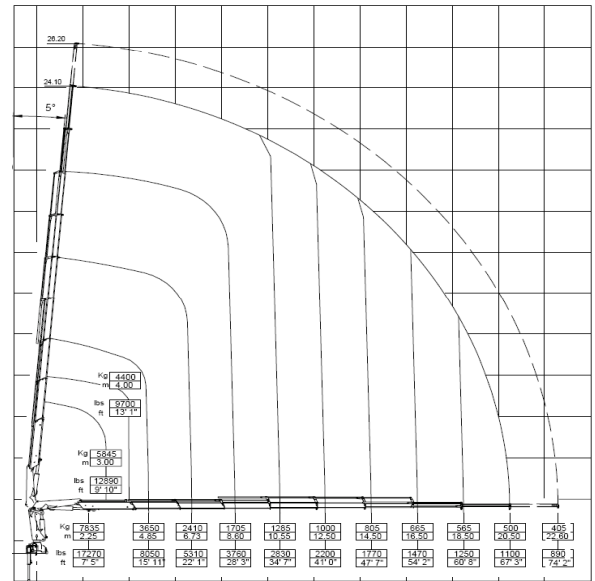
AC24-155 6 Hydraulic Extensions



AC24-155 7 Hydraulic Extension



AC24-155 8 Hydraulic Extensions

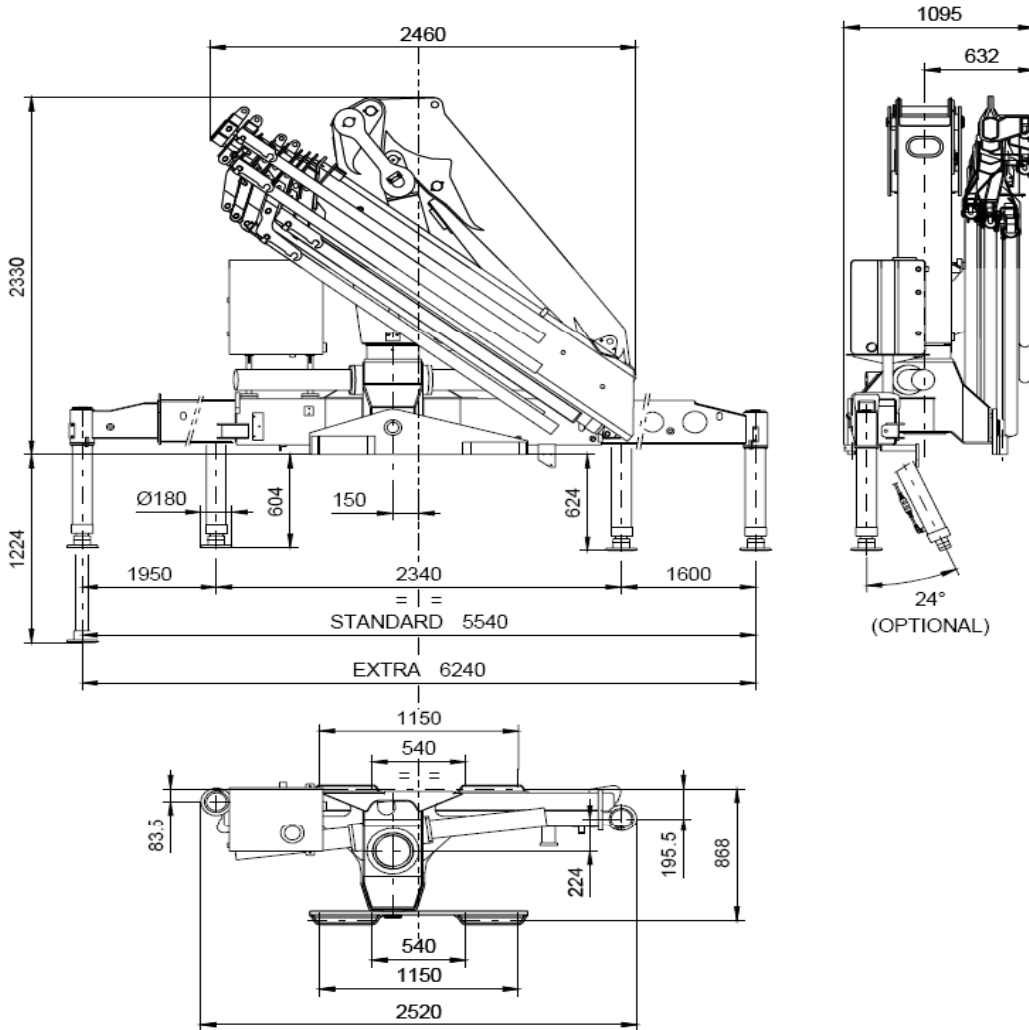


4707 N. Mingo Road  
 Tulsa, OK 74117  
 918-836-0463  
 www.autocrane.com

# AC24-155 Articulating Crane

## Geometric Configurations (Dimensions)

AC24-155 8 Hydraulic Extensions (mm)



## Special Features (on select models)

