

MAIN TECHNICAL PARAMETERS

	Item	Value	Remarks	
Working performance	Max. rated lifting capacity	t	600	Nominal OM
	Max. load moment of basic boom	t.m	1800	Rear area
	Max. load moment of main boom (fully extended)	t.m	1312	
	Max. lifting height of basic boom	m	16	
	Max. lifting height of main boom	m	90	
	Max. lifting height of jib	m	140	
Working speeds	Max. hoist rope speed (Main winch)	m/min	120	The 6 th layer
	Boom derricking up time	s	110	
	Boom extending time (7 sections)	min	15	
	Slewing speed	r/min	0 - 1	
Driving	Max. operation altitude	m	3000	
	Max. driving speed	km/h	80	
	Max. gradeability	%	50	
	Min. turning diameter	m	25.2	
	Min. ground clearance	mm	415	
	Limits for exhaust pollutants and smoke		National stage VI	
	Front overhang angle	°	15	
Rear overhang angle	°	10		
Mass	Deadweight in driving condition	kg	84000	
	Complete vehicle kerb mass	kg	83805	H Status
	Single axle load	kg	12000	H Status
	Overall dimensions (L×W×H)	mm	19650×3000×4000 (IV)	H Status
Dimension	Outrigger spread (W)	m	9.4 (6.1)	
	Outrigger spread (L)	m	10.6	
	Slewing radius of counterweight tail	mm	7100	
	Main boom length (7 sections)	mm	17.3 - 90	
	Main boom length (4 sections)	m	17.2 - 53.5	
	Boom angle	°	-0.2 - 85	

ZOOMLION

Zoomlion Heavy Industry Science & Technology Co.,Ltd.

Add: No.677, Lugu Road, Zoomlion Industrial Park, Changsha, Hunan, China, 410205

Copyright©2022 Zoomlion. All rights reserved. Reproduction and copying of any part of contents is not allowed for any purposes without Zoomlion's approval.



Product specifications are subject to change without notice and obligation. The photographs and/or drawing in this document are for illustrative purposes only. Please consult your local ZOOMLION dealer for more information.
website:en.zoomlion.com 2022.04.18

ZOOMLION ALL TERRAIN CRANE ZAT6000H



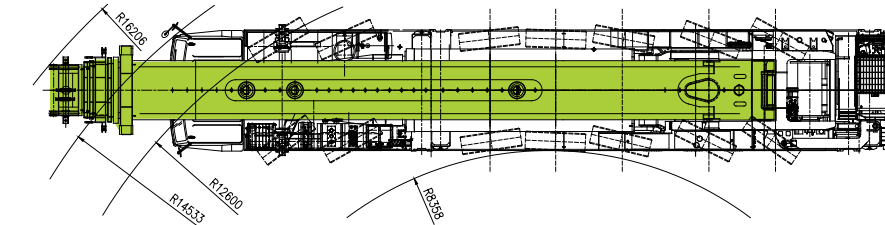
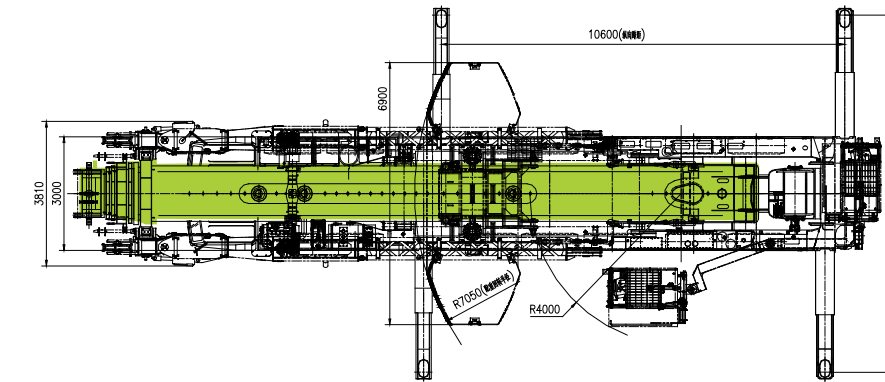
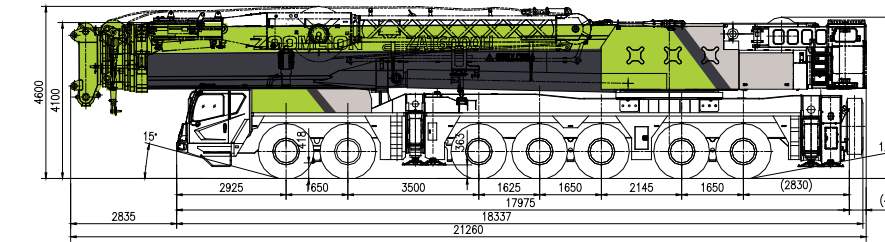
ZOOMLION

4.0
PRODUCTS

CONTENTS

DIMENSIONS	2-3
CRANE AND COMPONENTS WEIGHT	4
COUNTERWEIGHT	4
TECHNICAL FEATURE	4
BOOM COMBINATION	5-6
TRANSPORTATION AND WEIGHTS	7-9
TECHNICAL DISCRIPTION	9-11
LIFTING HEIGHT CHARTS	12-20
LIFTING CAPACITY TABLES	12-20

DIMENSIONS

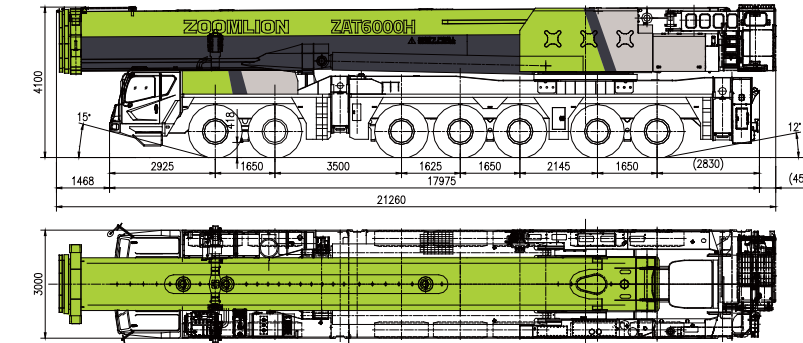


Unit: mm

Axle	Axle 1	Axle 2	Axle 3	Axle 4	Axle 5	Axle 6	Axle 7	Total weight (t)	Max speed (km/h)	Gradeability (%)	
										On-road	Off-road
H	12	12	12	12	12	12	12	84	80	28.9	53.2
S	12.1	12.1	12.1	12.1	16.2	16.2	16.2	97	60	25	47
B4	16.3	16.3	16.3	16.3	17.6	17.6	17.6	118	40	22	39
G4	21.2	21.2	21.2	21.2	16.4	16.4	16.4	134	20	18	32
B7	18.4	18.4	18.4	18.4	18.2	18.2	18.2	128	20	19	34
G7	24.3	24.3	24.3	24.3	16.3	16.3	16.3	146	8	16	29

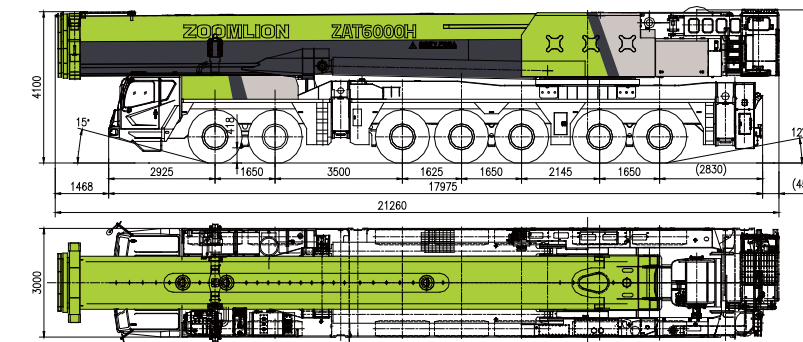
① High speed condition (H):

3-section main boom, without sliding beams, winches and hoist ropes
For long distance travelling, vehicle speed below 80 km/h and flexible suspension mode



② Sales delivery mode (S):

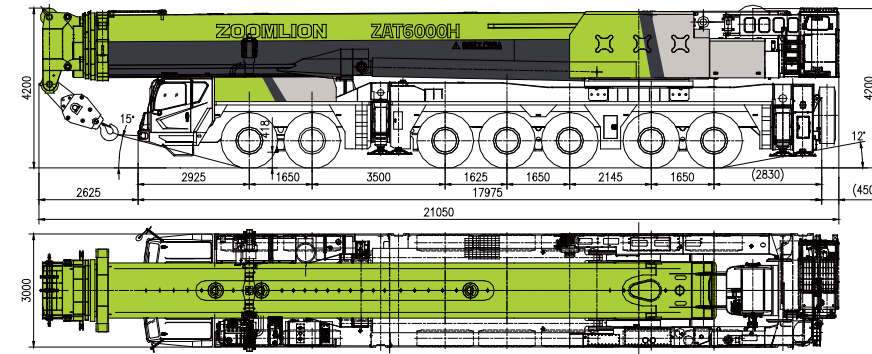
3-section main boom, without sliding beams, and with the winches and the hoist rope
For long distance travelling (sales delivery) , vehicle speed about 60 km/h and flexible suspension mode



DIMENSIONS

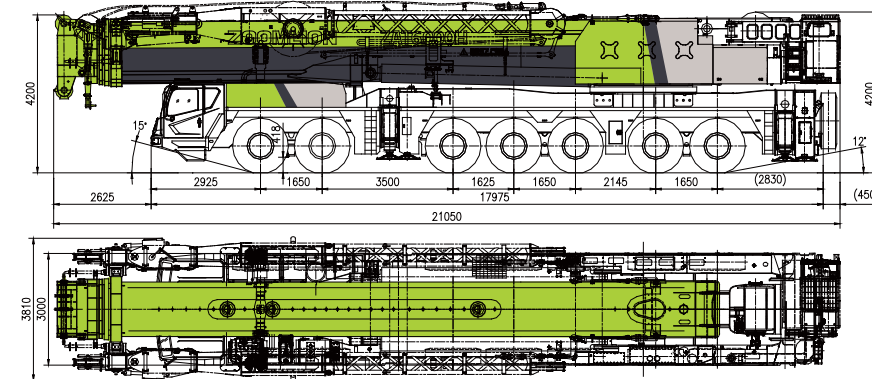
③ 4-section boom standard mode (B4):

4-section main boom + sliding beams + winches + independent head + 50 t hook
For long distance pavement travelling, vehicle speed below 40 km/h and flexible suspension mode



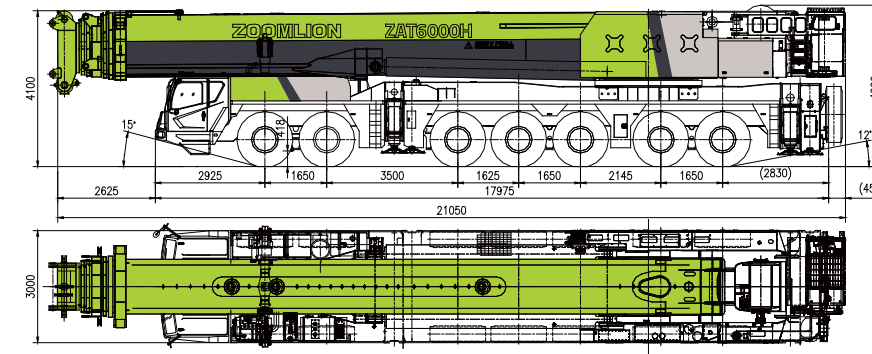
④ 4-section boom heavy-load mode (G4):

4-section main boom + sliding beams + winches + independent head + superlift assy.
For off-road short distance travelling, vehicle speed below 20 km/h and rigid suspension mode



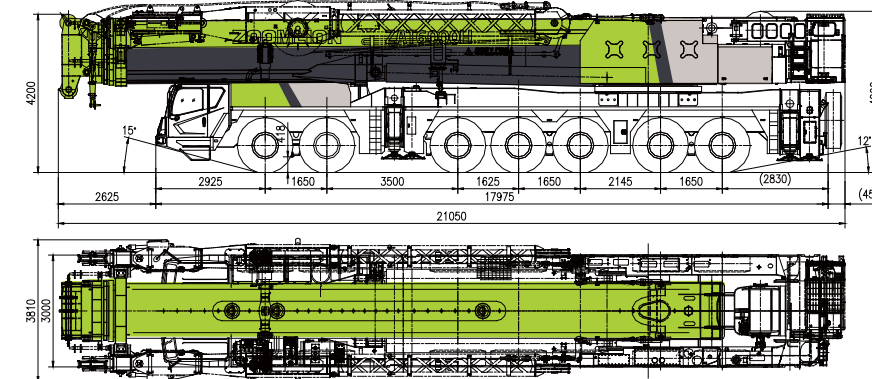
⑤ 7-section boom standard mode (B7):

7-section main boom + sliding beams + winches + superlift assy.
For off-road short distance travelling, vehicle speed below 8 km/h and rigid suspension mode



⑥ 7-section boom heavy-load mode (G7):

7-section main boom + sliding beams + winches + superlift assy.
For off-road short distance travelling, vehicle speed below 8 km/h and rigid suspension mode



CRANE AND COMPONENTS WEIGHT



Hook

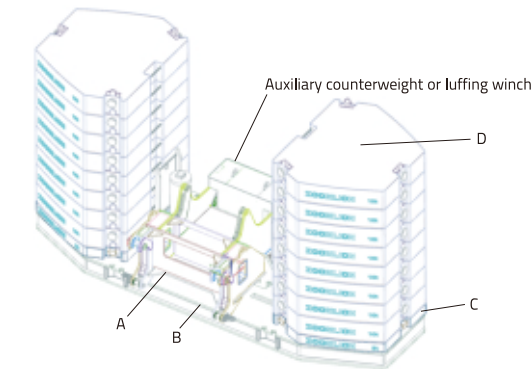
Specification	Weight (t)	Transport dimensions (mm)	Max. fall	Single/double hook	Standard/optional configuration
220t	3.4	2500×1160×760	24	Double	Optional
160t	2.7	2050×1000×760	14	Double	Standard
80t	1.7	1810×640×760	8	Double	Optional
40t	1.6	1760×600×760	3	Single	Standard
12t	0.7	1100×450×450	1	Single	Optional



Wire rope

	Diameter (mm)	Length (m)	Max. permissible
Main hoist rope	φ 24	800	13
Derricking rope, luffing jib	φ 24	780	13
Superlift rope	φ 34	195	36

COUNTERWEIGHT



	A	B	C	D
Weight (t)	10	18	5	10
Transport dimensions (m)	2.7×2.62×1.7	6.9×2.4×0.7	2.4×2.1×0.2	2×2.4×0.52
Quantity of full configuration (piece)	1	1	2	16

TECHNICAL FEATURE

Super long boom and excellent lifting capacity

- Main boom 90m and Max working radius is 78m. The lifting capacity is leading the industry.
- The "4 + 3" double working mode of the main boom meets the requirements of more working conditions.
- Main boom + auxiliary boom, superelevation operation height. The maximum combined length can reach 140m, which can meet the disassembly and assembly of tower crane with a height of 130m and the disassembly and assembly of central air conditioning host (77.8m main + 62m super lift and 8t auxiliary crane).

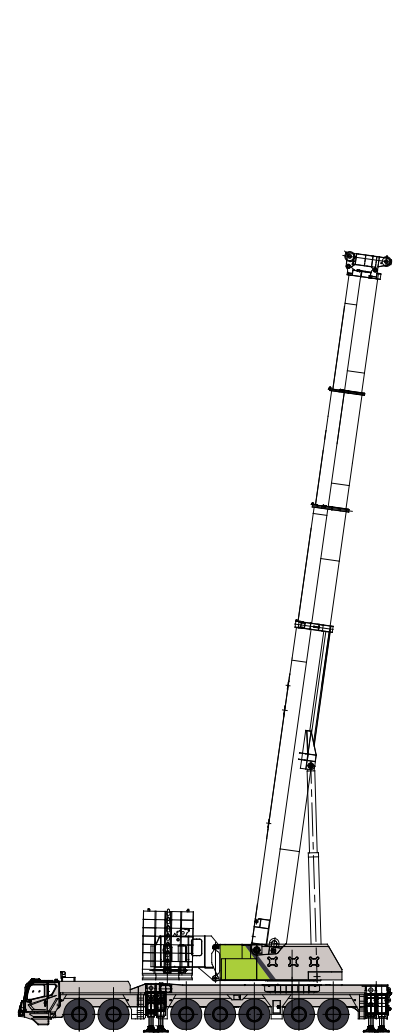
Excellent driving performance

- The newly upgraded seven axle all terrain chassis is equipped with Weichai or Mercedes Benz engine, with strong power, rated power of 480kw and maximum speed of 80km/h.
- The chassis driving mode is fully upgraded, with multi-mode all wheel steering, four axle drive, 445 large tires, minimum turning diameter of 25.2m, minimum ground clearance of 418mm, and better trafficability.
- It has dual modes of highway and off-road, taking into account the driving needs of different road conditions.

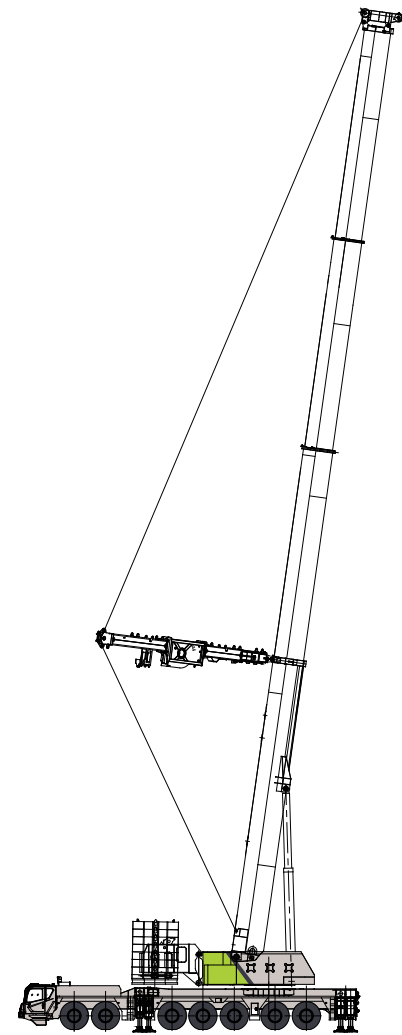
Low operating cost

- Dual engine.
- H-shaped movable outrigger, flexible and convenient.
- Super lift self loading and unloading.
- Heavy load short distance driving.

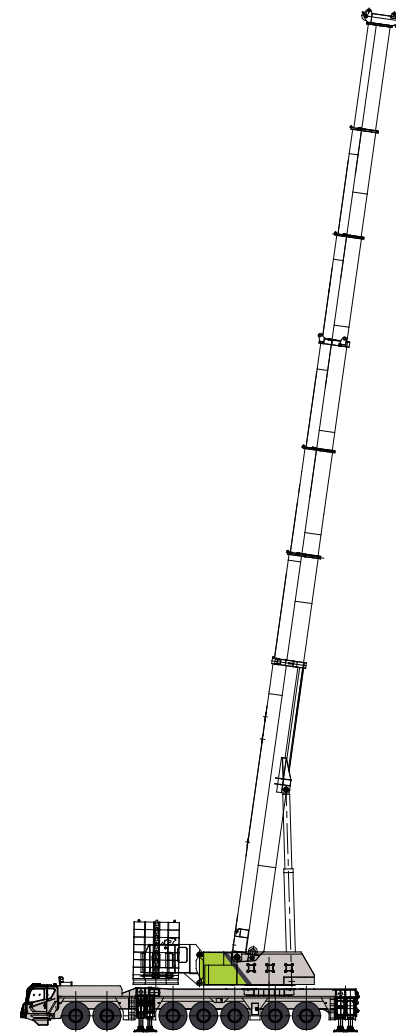
BOOM COMBINATION



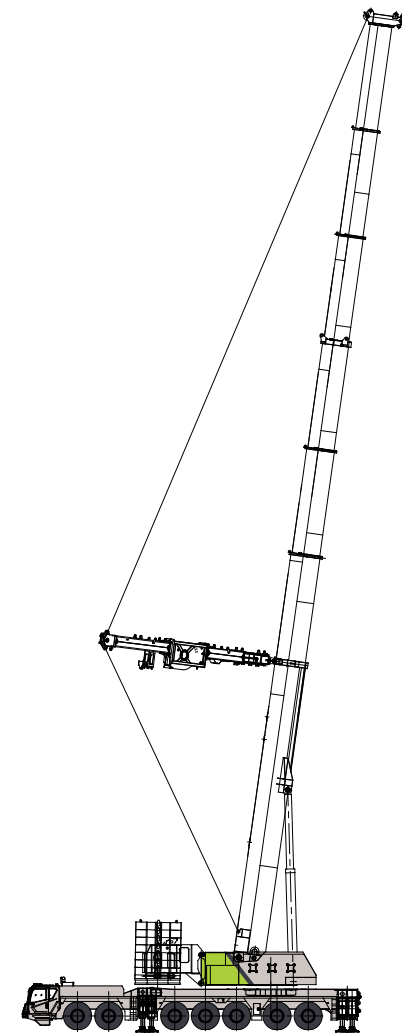
4-section main boom



4-section main boom + superlift

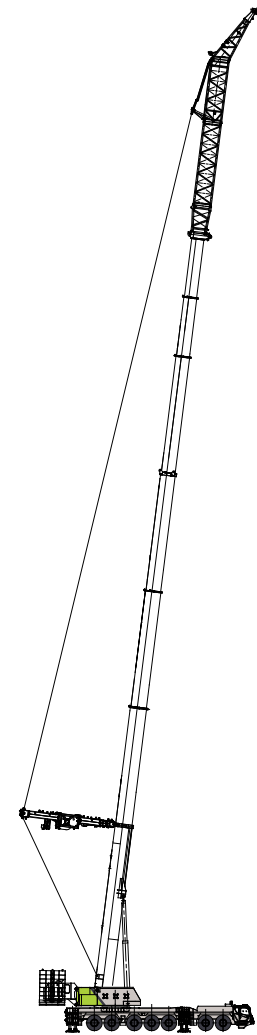


7-section main boom

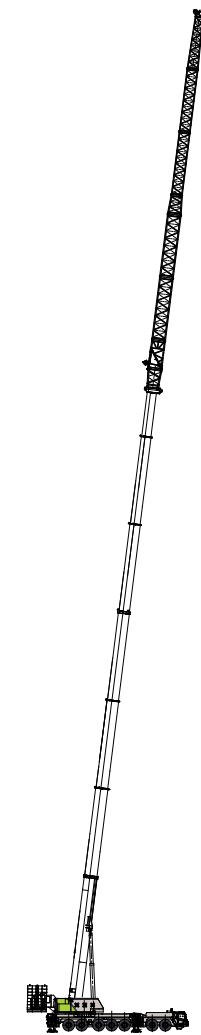


7-section main boom + superlift

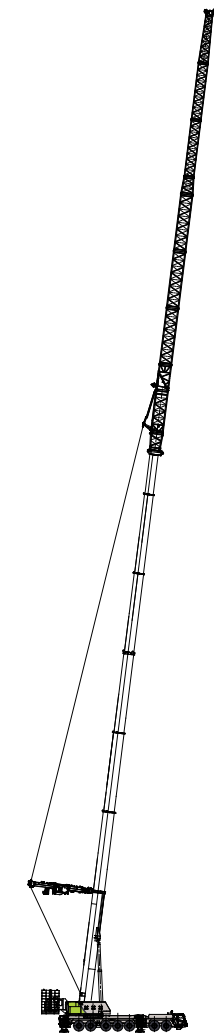
BOOM COMBINATION



Main boom + wind plant
jib + superlift



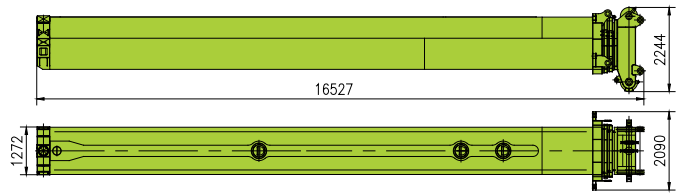
Main boom + jib



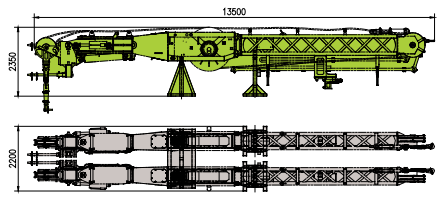
Main boom + jib + superlift

TRANSPORTATION AND WEIGHTS

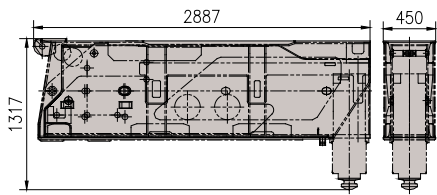
4 telescopic sections 21t×1



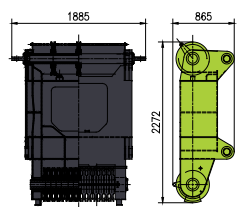
Superlift assy 18t×1



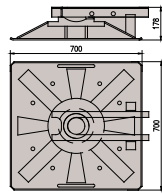
Sliding beams 2.5t×4



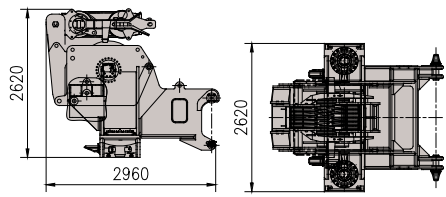
Individual head 1.8t×1



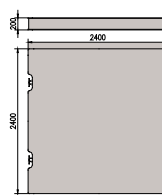
Small pad, outrigger 0.08t×4



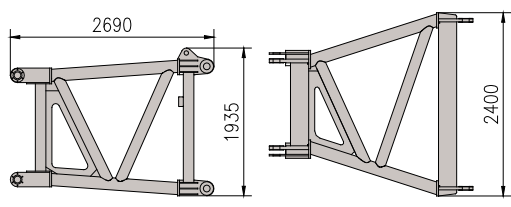
Counterweight carrier 10t×1



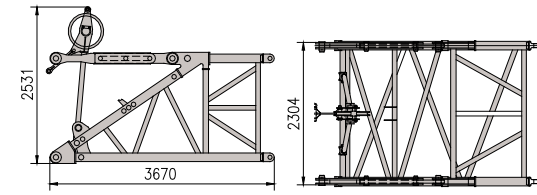
Big pad, outrigger 1.3t×4



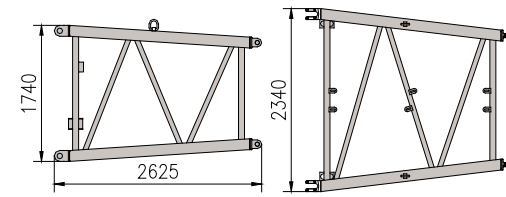
Jib/Adaptor, luffing jib 1.9t×1



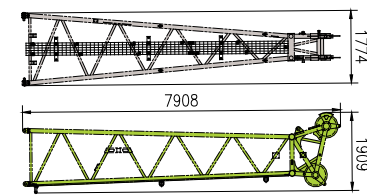
Articulated piece 1.5t×1



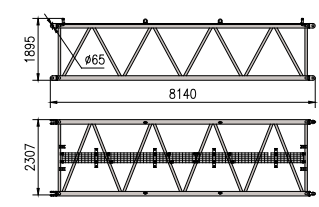
Extension, jib 0.7t×1



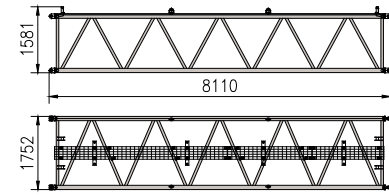
Head section, jib 1.4t×1



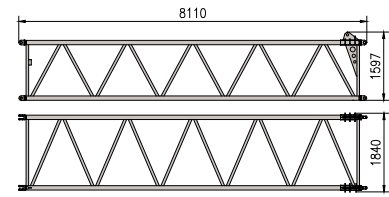
Jib/Extension1, luffing jib 1.8t×5



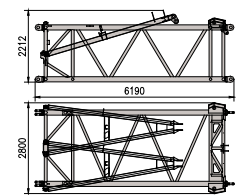
Jib/Extension 2, luffing jib 1.2t×3



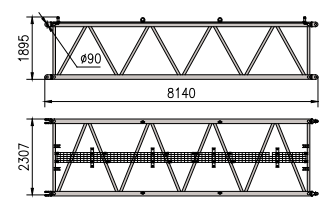
Extension 3, luffing jib 1.2t×1



Jib/Extension, A-frame of luffing jib 2.3t×1



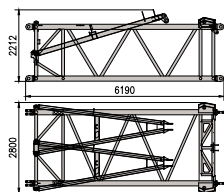
Extension, wind plant jib 2.0t×2



TRANSPORTATION AND WEIGHTS

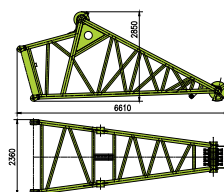
Extension, A-frame of wind plant jib

2.7t×1



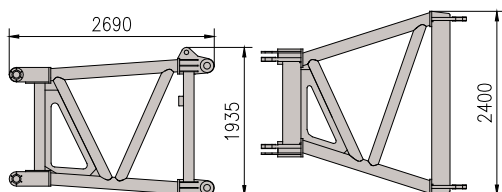
Wind plant tip boom

2.3t×1



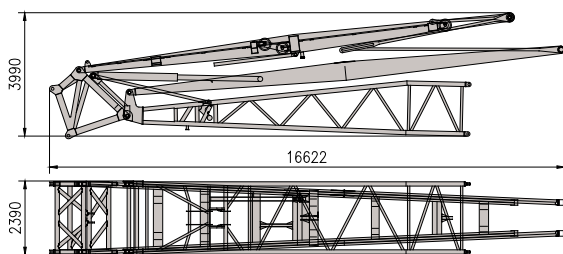
Adaptor of wind plant jib

1.9×1



Pivot section assy. of luffing jib

11.5t×1



TECHNICAL DISCRIPTION



Engine

6-cylinder in-line diesel, manufactured by Dongfeng Cummins QSL8.9-C360, turbo-charged, intercooled.

Performance: 264 KW at 2200 rpm .

Maximum torque: 1520 Nm at 1200 – 1600 rpm.

Fuel tank capacity: 370L.



Main boom

7-section telescopic boom made of 1100MPa high-tensile steel.

Optimal oviform boom profile of particular tensional rigidity, outstanding local stability and for the super lifting capacities.

There are two operating modes, namely 4-section main boom and 7-section main boom.

Under 4-section main boom operation mode, the boom length completely extended is 53.8 m.

Under 7-section main boom operation mode, the boom length completely extended is 90 m.



Jib

Fixed jib length: 16 m, 24 m, 32 m, 40 m, 48 m.

When the fixed jib is operated with the superlift and A-frame, the combination length are 22 m, 30 m, 38 m, 46 m, 54 m, 62m.

The jib adopts the stepless derricking which consists of front and rear derrickings. The stepless derricking is suitable for the different construction sites.

All of lattice jibs cannot be attached with the vehicle during driving.

TECHNICAL DISCRIPTION



Operator's cab

4.0 series spacious panoramic cab with sliding door, outward pushing windshield, front foot pedal, safe guard rail around the roof and side of the cab.

No instrument console and electric elements are in the front of the cab.

Integrated bus key panel is compact, simple and reliable.

Vertical 12 inch two-in-one LCD (touch screen) integrates all of functions and has good observation angle.

USB interface is chargeable.

Rear swing operator's cab movement mechanism can realize bipolar swing, raise/lower, tilt forwards and backwards movements etc.

Cab heater and air conditioning.



Control system

Control system Superstructure hydraulic system adopts open and closed combined system. Main winch and slewing gear adopt the closed system. Luffing gear and telescoping system adopt the open system. Other auxiliary mechanism adopts the valve control system.

Germany Linde hydraulic pump, motor and Bucher big flow proportional control valve block greatly improve the operation reliability and the inching performance.

Control mode plus closed winch safe control strategy, simultaneous crane movements loading strategy, the operational stability and smoothness control strategy of main movements.



Hook

Hook: 220t, 160t, 80t, 40t, 12t.

As for the hooks are equal to or more than 80t, they are ramshorn ones.

40t and 160t hooks are standard configurations.



Steering system

Electrical control all-wheel steer with 6 steering programs.

Wired emergency control box.

3 front axles are mechanical steer and 4 rear axles are electro-hydraulic proportional steer.

Double-channel steering gear and single axle double-cylinder booster.

Centralizing cylinders on all of electrical control steering axles for automatic straightening of axles in case of failure.



Engine

Model: Weichai WP15H660E61series.

Type: turbo-charged, intercooled.

Displacement: 15.33 L.

Rated power: 485 kw at 1800 r/min.

Max. output torque: 3200 N.m at 900 - 1400 r/min.

Limits for exhaust pollutants and smoke: conforming to National Stage VI.

Fuel tank capacity: 500L.

Optional:

Benz OM473LA,6-57 engine.

Performance: 480 KW at 1600 rpm .

Maximum torque: 3100 Nm at 1100 rpm.

Fuel tank capacity: 500L.



Axles

With disc brakes.

Axle load: 12t.

Drive type: 14×8.

All axles are steered. Axles 1, 3, 5 and 6 are mechanical drive.

Axles 1, 3, 5 and 6 are with transversal differentials and differential locks.

TECHNICAL DISCRIPTION



Telescoping system

Fixed jib length: 16 m, 24 m, 32 m, 40 m, 48 m.

When the fixed jib is operated with the superlift and A-frame, the combination length are 22 m, 30 m, 38 m, 46 m, 54 m, 62m.

The jib adopts the stepless derricking which consists of front and rear derrickings. The stepless derricking is suitable for the different construction sites.

All of lattice jibs cannot be attached with the vehicle during driving.



Monitoring system

Field-proven Hirschmann load moment limiter in high precision and for enhanced safety and reliability.

Via the CAN data bus system, support forces and chassis frame lateral inclination with indicators on the chassis and on the load moment limiter monitor in the operator's cab for enhanced safety.



Outrigger

H type two sectional outrigger.

Vertical cylinders with two-way hydraulic locks.

Outriggers can be controlled by an independent wireless small remote controller. Besides, it is equipped with a wire emergency control box.

The outrigger telescoping state and the complete vehicle level condition can be shown and monitored on the interface of load moment limiter in operator's cab in real time.



Tires

Tubeless tire.

Tire size: 445/95 R25 radial tires.

Tire pressure: 0.9 MPa.



Electrical system

CAN data bus technology.

The driver's cab is equipped with a large multifunctional electronic display screen (touch screen) in multiple interfaces with convenient interactive functions.

Generator: 28 V, 100 A.

6 travelling modes (controlled by rotary switches): high speed, sales delivery, 4-section boom standard, 4-section boom heavy-load, 7-section boom standard, 7-section boom heavy-load,

Bus arrangement, visual monitor and interface display help to check and clear the faults.

Click the system warning light to skip to the detection interface directly.



Driver's cab

4.0 series full-width and all-metal welded spacious cab with flexible lining is of convincing design and outstanding functionality.

The cab is with the following features:

Height and inclination adjustable steering wheel.

Electric windows, windshield wiper & washing device and large combined multi-angle reflectors.

3 comfortable seats with armrests and seat belts. (The pneumatically suspended driver's seat can be adjusted automatically to suit any driver height and size.)

Luxurious instrument console equipped with multifunctional electronic instrument,

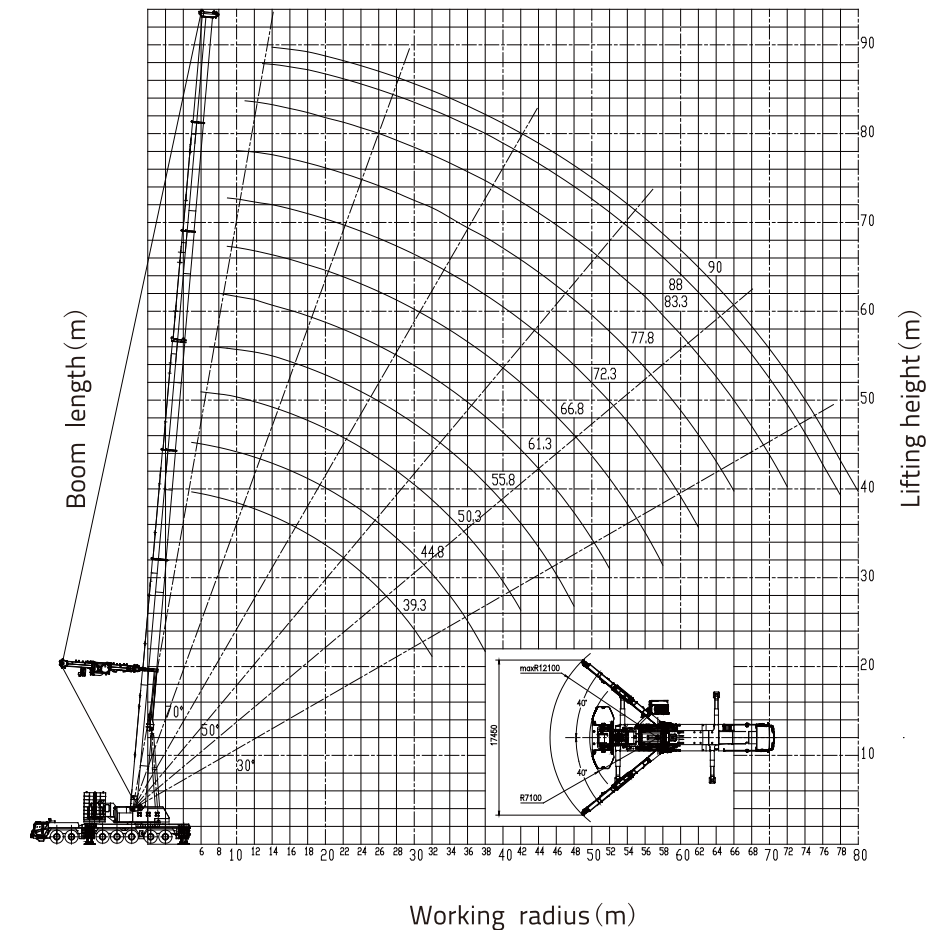
control lights, control switches, cigarette lighter, USB interface and MP3 player and so on

Adjustable cab heater / defroster and air conditioning.

Semi-floating driver's cab suspension.

LIFTING HEIGHT CHARTS

7-section main boom + superlift OM: 39.3m – 90m



LIFTING CAPACITY TABLES

7-section main boom

Unit: T

		17.3-90m		9.4×10.6		360°		198t						
R/L		17.3	17.3	22.8*	22.8	22.8	28.3*	28.3	28.3	28.3	33.8*	33.8	33.8	33.8
3		600*	315											
3.5		300	292	265	265	140	248	215	112	87				
4		285	272	260	260	137	245	212	105	82	245	215	195	76
4.5		270	255	250	245	133	238	205	96	78	242	210	188	72
5		255	236	235	231	127	225	195	87	73	234	205	177	67
6		235	215	215	213	119	211	186	80	68	213	198	165	62
7		215	194	194	195	112	196	178	74	63	193	188	152	57
8		198	177	177	179	105	178	168	68	58	175	175	140	53
9		186	161	161	165	99	163	160	64	54	162	163	130	48.5
10		174	148	148	152	94	151	150	60	51	148	151	120	45
11		160	137	137	140	88	138	139	56	48	137	140	110	42
12		148	127	127	130	82	127	128	52	45	129	130	102	39
13		138.5	118	118	118	77	116	119	47	42	120	120	94	36.2
14		125	110	108	109	71	107	110	43	39	110	111	85	33.8
16				97	99	65	98	101	39	36	100	102	78	31.5
18				85	88	59	88	91	36	33.2	89	91	70	29
20							78	82	33.9	30.5	78	80	63	26.5
22							70	73	32.2	28.3	69	70	59	24.4
24											61	62	55	22.6
26											54	55	51	21
28											48	49	48	19.7
N _{max}		18	18	18	18	18	18	18	18	18	16	16	16	16
W _{max}		11.1m/s												
Hook		220t (3410kg) / 130t(2610kg) / 80t(1700kg) / 50t(1710kg)												
Telescoping mode	I	1	1	1	1	1	1	1	1	1	2	1	1	1
	II	1	1	2	1	1	2	1	1	1	2	2	1	1
	III	1	1	1	2	1	2	2	1	1	2	2	2	1
	IV	1	1	1	1	1	1	2	1	1	1	2	2	1
	V	1	1	1	1	1	1	1	2	1	1	1	2	2
	VI	1	1	1	1	2	1	1	2	3	1	1	1	3

LIFTING CAPACITY TABLES

7-section main boom + superlift

Unit: T

R/L	39.3*	39.3	39.3	39.3	44.8*	44.8	44.8	44.8	50.3*	50.3	50.3	50.3	
5	220	220	198	145	185	170	145	132					
6	210	210	192	138	181	165	136	126	168	172	145	130	
7	195	195	182	128	176	161	126	118	165	168	142	127	
8	178	178	170	120	168	155	118	110	162	164	136	122	
9	163	163	158	111	158	150	109	103	157	159	130	116	
10	148	148	148	103	148	144	102	97	148	150	124	110	
11	136	136	138	97	138	135	96	91	137	140	118	104	
12	125	125	128	91	128	126	91	85	128	131	112	98	
13	116	116	118	85	118	116	85	80	119	121	106	93	
14	106	106	109	80	108	107	79	74	110	110	100	88	
16	96	96	100	74	98	98	74	68	97.5	97	92	83	
18	85	85	90	68	87	88	68	63	86	87	85	79	
20	75	75	80	63	78	80	63	58	76	77	78	74	
22	66	66	72	58	69.8	71.5	59	54	68	67	71	68	
24	59	59	64	54	62.3	64	54.5	50	61	59	64	63	
26	52	52	58	50.5	55.6	57.5	51.5	47	54.5	53	57	58	
28	46.5	47	52	47	50	52	48.5	44	49	48	51.5	53.5	
30	42	43	47.5	44.5	45	47.5	45.5	41	44	43	46.5	48.5	
32	37	39	43	42	40.5	43	43.2	39	40	39	42	44.5	
34					36.5	39	41	37	36	34.3	38	40.5	
36					32.8	35.5	39.3	35	32.4	31	34.6	36.9	
38					29.3	32.5	37.5	33.8	29.1	27.3	31.5	33.6	
40									26.1	24.5	28.3	30.5	
42									23.4	21.5	25.7	28	
N _{max}	18	18	18	18	16	16	16	16	14	14	14	14	
W _{max}	11.1m/s												
Hook	220t (3410kg) / 130t(2610kg) / 80t(1700kg) / 50t(1710kg)												
Telescoping mode	I	2	1	1	1	2	1	1	1	2	3	1	1
	II	2	2	1	1	2	2	1	1	2	2	2	1
	III	2	2	2	1	2	2	2	1	2	2	2	1
	IV	2	2	2	1	2	2	2	2	2	2	2	3
	V	1	2	2	3	2	2	2	3	2	2	2	3
	VI	1	1	2	3	1	2	3	3	2	1	3	3

7-section main boom + superlift

Unit: T

R/L	55.8*	55.8	55.8	55.8	61.3*	61.3	61.3	61.3	66.8*	66.8	66.8	66.8	
7	148	125	120	118									
8	146	122	118	116	131	125	110	98					
9	144	119	116	114	130	123	108	96	115	108	95	92	
10	140	114	113	111	129	121	105	94	113	105	93	91	
11	135	110	110	108	128	118	102	91	111	102	91	89	
12	128	105	106	104	123	114	98	88	108	97	89	87	
13	120	100	102	99	117	108	93	85	105	91	87	85	
14	110	95	98	93	108	102	88	82	100	86	84	82	
16	97	90	93	86	96	94	81	77	94	81	80	78	
18	87	85	87	79	86.5	87	76	72	85	75	75	73	
20	78	79	80	73	77	80	72	68	78	70	70	69	
22	68	71	71.6	68	69	73	68	63	71	66	66	65	
24	61	62	64	63	62	65	63	59	63.6	61	61	62	
26	54	55	57	58	56	58	58	54	57	56.5	56	58	
28	48.5	50	51	53.5	50	52	53.6	50	51	53	52	54	
30	43.5	45	46	49	45	47	48.5	47	46	49	48	50	
32	40	40	42	44.5	40.5	42.5	44	44	41.6	45	44	46.5	
34	36	36.5	37.8	41	36.2	38.6	40	41	37.5	41.4	40.5	42.5	
36	32.4	33.3	34.2	37.5	32.5	35.1	36.5	38.5	34	37.8	37	38.7	
38	29.1	30.2	31	34.5	29.2	32	33.5	35	31	34.6	33.5	35.6	
40	26.2	27.2	28.2	31.5	26.5	28.8	30.5	31.5	27.8	31.8	30.5	32.8	
42	23.3	25	25.6	29	23.8	26.1	27.6	28.8	25.2	29.1	27.9	30.2	
44	20.8	23	23.2	26.5	21.4	23.5	25.2	26.5	22.6	26.7	25.5	27.8	
46	18.6	21.5	21	24	19.3	21.3	22.9	24.8	20.3	24.6	23.5	25.6	
48	16.4	19.2	18.8	22	17.2	19.3	20.9	23.5	18.3	22.6	21.8	23.6	
50					15.1	17.3	19.1	22	16.2	20.6	20	21.8	
52					13.3	15.6	17.2	20.2	14.5	18.9	18.9	20	
54									12.8	17.2	17.6	18.4	
56									11.3	15.8	16.2	16.8	
58									9.7	14.3	14.8	15	
N _{max}	18	18	18	18	16	16	16	16	14	14	14	14	
W _{max}	11.1m/s												
Hook	130t(2610kg) / 80t(1700kg) / 50t(1710kg)												
Telescoping mode	I	3	2	2	1	3	2	2	1	3	2	1	
	II	2	2	2	1	3	2	2	1	3	3	2	2
	III	2	2	2	2	2	3	2	3	3	3	2	3
	IV	2	3	2	3	2	3	2	3	2	3	3	3
	V	2	2	2	3	2	2	3	3	2	2	3	3
	VI	2	2	3	3	2	2	3	3	2	2	3	3

LIFTING CAPACITY TABLES

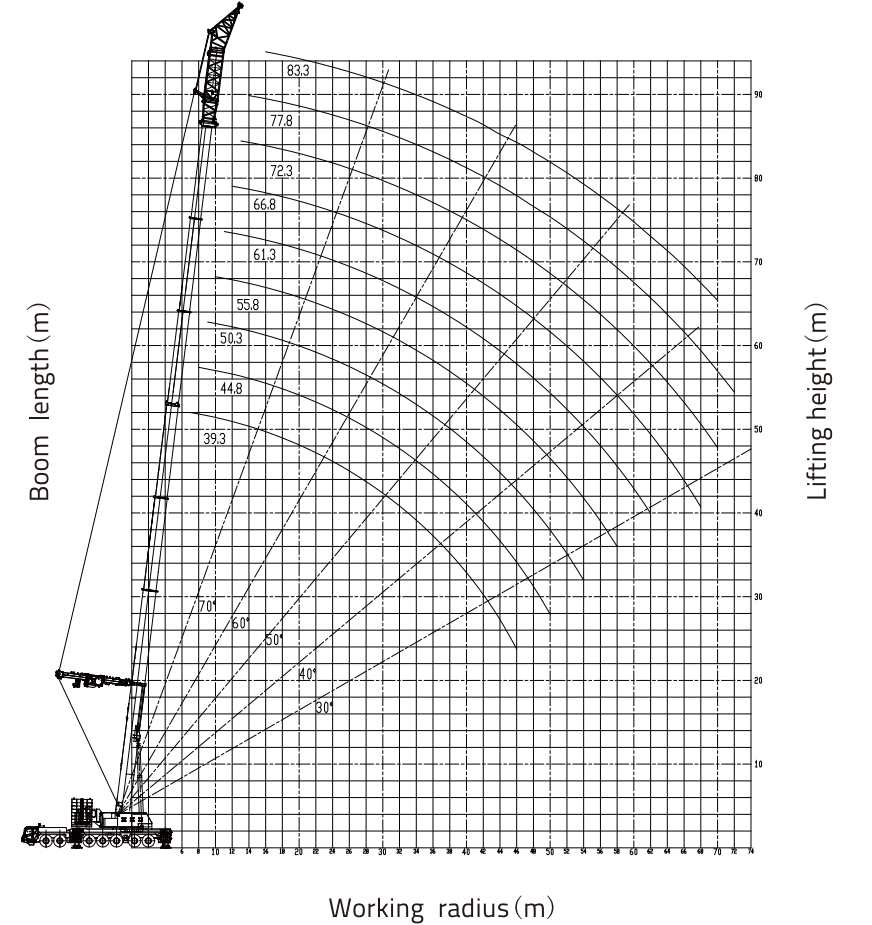
7-section main boom + superlift

Unit: T

R/L	72.3*	72.3	72.3	77.8*	77.8	83.3	88	90
10	99	94	90					
11	97	92	89	84	82			
12	96	90	87	83	81	72		
13	94	88	85	82	80	71	60	
14	91	85	82	80	78	70	59.5	57
16	88	81	78	78	76	68	59	56.5
18	83	76	73	75	72	66	58	56
20	76	71	68	70	66	63	57	55
22	69	65	63	65	61	60	55.5	53.5
24	63	60	59	60	57	57	54	52
26	57	56	55	55.5	53	54	52	49
28	52.3	51.5	51	51.5	50	50.2	49.5	46.5
30	47	47.5	48	47.5	47	47.4	46.5	43.5
32	42.5	44.5	45	43.8	44	43.7	43	41
34	38.6	41.4	42	39.8	40.5	40.3	40	38.5
36	35.1	38	39	36.5	37.5	37.2	37	36
38	32	35	35.8	33.3	34.5	34.2	34	33.3
40	29	32.4	33	30.5	32	31.5	31.3	31.2
42	26.2	29.7	30.3	27.9	29.5	29	29	29
44	23.8	27.4	28	25.5	26.8	26.6	26.6	27
46	21.5	25.2	25.8	23.4	24.8	24.5	24.5	24.8
48	19.6	23	23.8	21.3	22.7	22.6	22.6	22.8
50	17.8	21.3	22	19.3	20.5	20.8	20.8	20.7
52	15.8	19.5	20.2	17.7	18.9	19.1	19.1	19.2
54	14.3	17.8	18.7	16.2	17.2	17.4	17.4	17.6
56	12.8	16.2	17.2	14.6	15.6	15.8	15.8	16.1
58	11.6	14.8	15.8	13.1	14.3	14.5	14.5	14.8
60	10.1	13.6	14.4	11.9	12.9	13.2	13.2	13.5
62	8.9	12.2	13	10.7	11.7	11.9	11.9	12.3
64				9.5	10.5	10.8	10.8	11.2
66				8.2	9.8	9.8	9.8	10.2
68					8.7	8.7	8.7	9.3
70					7.3	7.5	8.2	
72					6.2	6.5	7.4	
74						5.6	6.5	
76						4.8	5.8	
78							5.2	
80							4.6	
N _{max}	18	18	18	18	16	16	16	16
W _{max}	9m/s							
Hook	80t(1700kg) / 50t(1710kg)							
Telescoping mode	I	3	2	1	3	2	4	4
	II	3	2	3	3	3	4	4
	III	3	3	3	3	3	4	4
	IV	3	3	3	3	3	4	4
	V	2	3	3	3	3	3	4
	VI	2	3	3	2	3	3	4

LIFTING HEIGHT CHARTS

7-section main boom + superlift + 14m wind plant jib OM



LIFTING CAPACITY TABLES

7-section main boom + superlift + 14m wind plant jib OM

Unit: T

R/L	39,3+14	39,3+14	44,8+14	44,8+14	50,3+14	50,3+14	55,8+14	55,8+14	
7	85	75							
8	84	74	85	75					
9	83	72.5	84	74	85	68			
10	82	71	82	72	83	66	84	67	
11	80	69	80	70	81	64	82	65	
12	78	67	77	67	79	62	79	63	
13	76	65	74	63	76	59	75	60	
14	72.4	62.5	71	58	73	56	70	56	
16	68	59.5	67	53.5	70	52	65	51	
18	64	56	64	49.5	67	48.5	61	47.5	
20	60.2	51	60	46	64	45	56.5	44.5	
22	57	46	57	42.8	60	42	53	41.5	
24	53.5	41	54.1	40	56	39.2	49	38.6	
26	50.8	38	51.5	37.8	52	36.7	45	36.3	
28	48	35.8	49	35.5	48	34.5	41	34.2	
30	45	33.7	46	33.5	44	32.5	37	32.3	
32	41	31.9	42.2	31.5	40	30.8	33	30.5	
34	37	30.2	38.5	29.8	36	29.2	29.5	28.9	
36	33.3	28.7	34.9	28.3	31.5	27.5	26.8	27.5	
38	30.1	27.3	31.7	26.9	26.8	26	24.5	26	
40	27.1	26	28.8	25.7	23.5	24.8	22.2	24.5	
42	24.3	24.8	26.1	24.5	21	23.5	20.2	23.3	
44	21.8	23.7	23.6	23.4	19.2	22.3	18.3	22.2	
46	19.5	22.8	21.4	22.5	17.4	21	16.6	20.9	
48			19.3	21.5	15.7	19.7	15	19.7	
50			17.3	20.7	14.1	18.4	13.5	18.5	
52					12.4	16.8	12	17.2	
54					10.5	15.5	10.6	15.9	
56							9.3	14.5	
58							7.9	13.2	
N _{max}	10	10	10	10	9	9	9	9	
Under wind plant OM, firstly perform the rope arrangement before operation									
W _{max}	8.1m/s								
Hook	Use 130t (2610kg) hook preferentially and apply big fall during repair and maintenance								
Telescoping mode	I	2	1	2	1	2	1	3	1
	II	2	1	2	1	2	1	2	1
	III	2	1	2	1	2	1	2	2
	IV	2	1	2	2	2	3	2	3
	V	1	3	2	3	2	3	2	3
	VI	1	3	1	3	2	3	2	3

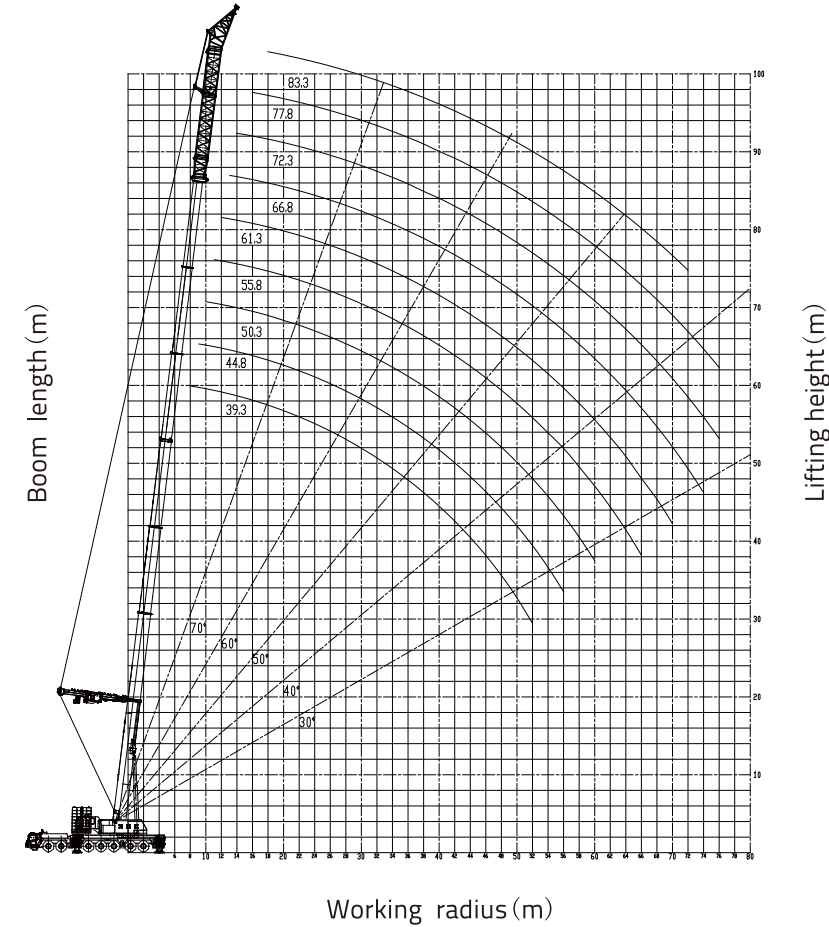
7-section main boom + superlift + 14m wind plant jib OM

Unit: T

R/L	61,3+14	61,3+14	66,8+14	66,8+14	72,3+14	72,3+14	77,8+14	77,8+14	83,3+14	
11	82	66								
12	80	64	81	63						
13	77	60	79	60	80	60				
14	73	56	76	56	78	57	68	55		
16	68	51	71	52	75	52	65	50	55	
18	64	47	66	48	70	47	62	45	53	
20	60	44	61	44	64	43	58	42	51	
22	56	41	56	41	59	40	54	39	49	
24	52	38	52	38	54	37	49	37	46	
26	48.5	36	48	35.5	49	35	44.5	35	42	
28	45	34	45	33.8	45	33.2	41	33.5	39	
30	41	32.3	42	32.1	40	31.8	37	32	36	
32	37	30.8	39.5	30.6	35	30.4	34	30.3	33	
34	32.5	29.3	37	29.2	30	29.1	31	29	31	
36	28.2	28	34.5	27.8	26	27.5	28	27.7	29.2	
38	25.2	26.6	31.8	26.5	23.2	25.8	25.5	26.4	27.5	
40	22.5	25.2	29	25.3	21	24.2	23.4	24.8	25.5	
42	20.5	23.8	26	24.2	19.2	22.5	21.6	23.4	23.5	
44	18.5	22.4	23	23	17.5	21	19.9	21.8	21.5	
46	16.5	21	20.1	21.5	15.9	19.5	18.3	20.3	19.5	
48	14.9	19.8	17.5	20	14.4	18	16.7	18.6	17.6	
50	13.5	18.6	15.5	18.4	13.1	16.6	15.3	17.1	16.2	
52	12.1	17.4	13.8	17	11.8	15.3	13.9	15.7	14.8	
54	10.8	16	12.3	15.7	10.6	14.1	12.6	14.4	13.6	
56	9.5	14.8	10.9	14.4	9.5	13	11.4	13.2	12.4	
58	8.3	13.6	9.6	13.3	8.4	11.9	10.3	12	11.2	
60	7.2	12.4	8.4	12.2	7.4	10.8	9.2	11	10.2	
62	6	11.2	7.2	11.1	6.4	9.9	8.2	10	9.1	
64			6.2	10	5.5	8.9	7.3	9	8.2	
66			5.1	9.1		8	6.4	8.1	7.3	
68				8.1		7.2	5.5	7.2	6.5	
70						6.3		6.4	5.6	
72								5.6		
N _{max}	8	8	8	8	7	7	7	7	6	
Under wind plant OM, firstly perform the rope arrangement before operation										
W _{max}	8.1m/s									
Hook	Use 130t (2610kg) hook preferentially and apply big fall during repair and maintenance									
Telescoping mode	I	3	1	3	1	3	1	3	2	3
	II	3	1	3	2	3	3	3	3	3
	III	2	3	3	3	3	3	3	3	3
	IV	2	3	2	3	3	3	3	3	3
	V	2	3	2	3	2	3	3	3	3
	VI	2	3	2	3	2	3	2	3	3

LIFTING HEIGHT CHARTS

7-section main boom + superlift + 22m wind plant jib OM



LIFTING CAPACITY TABLES

7-section main boom + superlift + 22m wind plant jib OM


Unit: T

R/L	39,3+22	39,3+22	44,8+22	44,8+22	50,3+22	50,3+22	55,8+22	55,8+22	
8	85	73							
9	84	72	85	70					
10	83	70.5	84	69	84	68			
11	82	69	82	68	82	66	83	67	
12	80	67	80	66	80	64	80	65	
13	78	65.5	77	64	77	62	76	63	
14	75	63.5	74	62	73	59	72	60	
16	71.5	61.5	71	58	68	56	67	56	
18	67.3	59.5	67	53.5	63	52	63	51	
20	63.2	56	62	49.5	58	48.5	59	47.5	
22	59.2	51	57	46	54	45	55	44.5	
24	55.5	46	53	42.8	49.5	42	50	41.5	
26	52.2	41	49.1	40	45.5	39.2	45.6	38.6	
28	48.8	36.5	45.3	37.2	41.5	36.7	42	36.3	
30	45.7	33.5	41.5	35	38.2	34.5	38.8	34.2	
32	42.8	31.4	38	33	35.2	32.5	35.5	32.3	
34	40.2	29.6	35.2	31	32.2	30.8	32	30.5	
36	37.5	28	32.5	29.3	29.8	29.2	28.5	28.9	
38	34.8	26.6	30.2	27.8	27.6	27.5	26	27.5	
40	32.5	25.2	28.2	26	25.6	26	23.8	26	
42	29.8	24	25.8	24.8	23.6	24.8	22	24.5	
44	27	22.8	23.5	23.5	21.6	23.5	20.6	23.3	
46	24.6	21.8	21.5	22.2	19.9	22.3	19.5	22.2	
48	22.4	20.7	19.6	21	18.3	21	18.2	20.9	
50	20.3	19.8	17.8	19.7	16.8	19.7	17	19.7	
52	18.4	19	16.2	18.6	15.2	18.6	15.8	18.6	
54			14.6	17.5	13.5	17.5	14.7	17.5	
56			13.1	16.5	12.2	16.5	13.6	16.5	
58				10.7	15.3	12.3	15.3	15.3	
60				9.4	14.2	11.1	14.2	14.2	
62						9.9	13.3	13.3	
64							8.8	12.3	
66							7.5	11	
N _{max}	10	10	10	10	9	9	9	9	
Under wind plant OM, firstly perform the rope arrangement before operation									
W _{max}	8.1m/s								
Hook	Use 130t (2610kg) hook preferentially and apply big fall during repair and maintenance								
Telescoping mode	I	2	1	2	1	2	1	3	1
	II	2	1	2	1	2	1	2	1
	III	2	1	2	1	2	1	2	2
	IV	2	1	2	2	2	3	2	3
	V	1	3	2	3	2	3	2	3
	VI	1	3	1	3	2	3	2	3

LIFTING CAPACITY TABLES

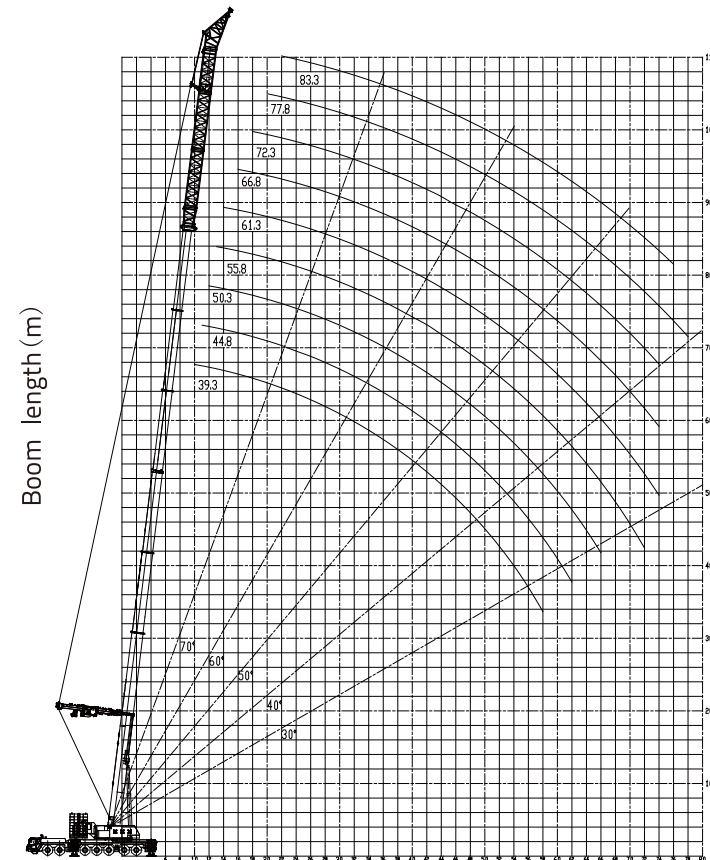
7-section main boom + superlift + 22m wind plant jib OM

Unit: T

										
R/L	61.3+22	61.3+22	66.8+22	66.8+22	72.3+22	72.3+22	77.8+22	77.8+22	83.3+22	
12	82	65								
13	79	63								
14	75	59								
16	71	55								
18	66	50								
20	62	46								
22	58	43								
24	53	41								
26	49	38								
28	45	36								
30	41	33.8								
32	36.5	32								
34	32.5	30.3								
36	28.4	28.7								
38	25.5	27.3								
40	23.2	26								
42	21.5	24.8								
44	20.3	23.7								
46	19.2	22.6								
48	18	21.7								
50	16.6	20.5								
52	15.5	19.2								
54	14.3	17.9								
56	13.2	16.5								
58	12.1	15.3								
60	10.9	14.2								
62	9.7	13.3								
64	8.6	12.3								
66	7.6	11								
68	6.6	10								
70	5.7	9.2								
72										
74										
76										
N _{max}	8	8	8	8	7	7	7	7	7	6
Under wind plant OM, firstly perform the rope arrangement before operation										
W _{max}	8.1m/s									
Hook	Use 130t (2610kg) hook preferentially and apply big fall during repair and maintenance									
Telescoping mode	I	3	1	3	1	3	1	3	2	3
	II	3	1	3	2	3	3	3	3	3
	III	2	3	3	3	3	3	3	3	3
	IV	2	3	2	3	3	3	3	3	3
	V	2	3	2	3	2	3	3	3	3
	VI	2	3	2	3	2	3	2	3	3

LIFTING HEIGHT CHARTS

7-section main boom + superlift + 30m wind plant jib OM



Boom length (m)


Lifting height (m)

Working radius (m)

LIFTING CAPACITY TABLES


7-section main boom + superlift + 30m wind plant jib OM

Unit: T

										
R/L	39.3+30	39.3+30	44.8+30	44.8+30	50.3+30	50.3+30	55.8+30	55.8+30		
10	75	70								
11	74	69								
12	73	67								
13	71	65								
14	69	63								
16	67	60.5								
18	65	56								
20	61.5	51								
22	58.5	45								
24	55	40								
26	51.8	36								
28	48.5	32.5								
30	45.5	29.8								
32	42.5	27.8								
34	38.5	26								
36	35	24.5								
38	31.8	23								
40	29	21.5								
42	26.5	20.2								
44	24.3	19.2								
46	22.3	18.3								
48	20.4	17.5								
50	18.6	16.7								
52	17	15.9								
54	15.4	15.2								
56	14	14.6								
58	12.6	14								
60										
62										
64										
66										
68										
70										
72										
N _{max}	10	10	10	10	9	9	9	9	9	9
Under wind plant OM, firstly perform the rope arrangement before operation										
W _{max}	8.1m/s									
Hook	Use 130t (2610kg) hook preferentially and apply big fall during repair and maintenance									
Telescoping mode	I	2	1	2	1	2	1	3	1	
	II	2	1	2	1	2	1	2	1	
	III	2	1	2	1	2	1	2	1	
	IV	2	1	2	2	2	3	2	3	
	V	1	3	2	3	2	3	2	3	
	VI	1	3	1	3	2	3	2	3	

7-section main boom + superlift + 30m wind plant jib OM

Unit: T

										
R/L	61.3+30	61.3+30	66.8+30	66.8+30	72.3+30	72.3+30	77.8+30	77.8+30	83.3+30	
14	58	53								
16	57	51								
18	55	48								
20	53	45								
22	51	42								
24	49	37.8								
26	47	34.2								
28	44	31.2								
30	41	29								
32	37	27.3								
34	34	25.5								
36	31.5	24								
38	29.5	22.5								
40	27.5	21.1								
42	25.9	20.2								
44	23.9	19.3								
46	22	18.5								
48	20.3	17.7								
50	18.8	16.9								
52	17.2	16.2								
54	15.7	15.6								
56	14.3	15								
58	13	14.4								
60	11.8	13.8								
62	10.7	13.3								
64	9.6	12.8								
66	8.6	12.3								
68	7.6	11.8								
70	6.7	11.2								
72	5.8	10.3								
74		9.4								
76										
78										
N _{max}	8	8	8	8	7	7	7	7	7	6
Under wind plant OM, firstly perform the rope arrangement before operation										
W _{max}	8.1m/s									
Hook	Use 130t (2610kg) hook preferentially and apply big fall during repair and maintenance									
Telescoping mode	I	3	1	3	1	3	1	3	2	3
	II	3	1	3	2	3	3	3	3	3
	III	2	3	3	3	3	3	3	3	3
	IV	2	3	2	3	3	3	3	3	3
	V	2	3	2	3	2	3	3	3	3
	VI	2	3	2	3	2	3	2	3	3